

# Bream Bay News

Established 1967. Delivered FREE twice monthly

Phone 432 0209. email [breambaynews@xtra.co.nz](mailto:breambaynews@xtra.co.nz)

Mobile 027432 0070

Postal address - RD 2, Waipu 0582

Website: [www.breambaynews.co.nz](http://www.breambaynews.co.nz) LOCALLY OWNED AND OPERATED

13 January 2022

## Affordable Quality

- \* SECURITY DOORS
- \* INSECT SCREENS
- \* SHOWER DOORS
- \* BLINDS
- \* AWNINGS
- \* WARDROBE SYSTEMS

Regular Bream Bay Service



PH: 438 9452

34 Albert St Whangarei  
Div. Shadelite Industry

## A week of volleyball action on Ruakākā Beach

Ruakākā beach is fast becoming the beach volleyball capital of New Zealand with the first round of a six leg national championship tour due to be played there this weekend 15 and 16 January, followed by what has been billed as the "Ruakākā Beach Bash -New Zealand's Largest Festival of Volleyball" over five days from Tuesday January 18 – Saturday 22.

The championship round will feature the top four seeded men's and women's teams fending off the top four teams of challengers decided in an elimination round. Players will be vying for a spot in the NZ Commonwealth Games volleyball team. Medal matches will take place from 1.30pm on Sunday.

The festival includes the NZ Provincial Beach Volleyball Championships with men's and women's under 19s and under 17s competitions from January 18 -20, with pool play to begin with followed by play offs on the final day.

The NZ University Tournament will be held on Friday 22, along with a boys and girls Under 15s tournament, a Masters Championship for over 35s as well as social games (with teams of 4-6 players of any age or gender).

In between on Thursday 21 January there is a Training Camp for 8-15 year olds –with guidance from some of the top players and coaches in the morning and a fun tournament in the afternoon. This will cost \$50 per person and registration with Volleyball NZ needs to be made by 16 January.

## College pool being put to good use



The Bream Bay College swimming pool is being put to good use this summer with the Whangarei District Council funding lifeguards to be present there each day from 10am to 6pm throughout the school holidays. A lane is reserved for people to swim laps while the rest of the pool is available for families to enjoy. Pool entry costs \$2 for adults and \$1 for children and those over the age of 12 years need to show their vaccination certificates to a lifeguard.

Pictured above : Sarita Jones with her nephew Declan Hemara (aged 6), daughters Sa'Learh Maine – 8 years and Hope Maine – 7 years and baby Ivirua Maine, aged 18 months.



## Langs Beach - Waipu Cove 1040 Cove Road

3 2 3 1 3

### Price by Negotiation

Christine Birss 027 235 4323 [christine.birss@bayleys.co.nz](mailto:christine.birss@bayleys.co.nz)  
MACKYS REAL ESTATE LTD, BAYLEYS, LICENSED UNDER THE REA ACT 2008

### A fresh change. A coastal escape

Are you looking for a change of lifestyle?

Space to enjoy your hobbies, & accommodate family/ friends

Polished floors and white walls give a crisp fresh look and feel to this property. With open plan living opening to both sides of the house, you can chase the sun or stay out of it – whichever works for you. Sheltered fenced front yard, complete with spa on deck, will assist you to relax as the kids and pets are contained. Self-contained unit for family or friends or rent out.

Potential income opportunity. Act to secure this property soon

[bayleys.co.nz/1152555](http://bayleys.co.nz/1152555)

**BAYLEYS**

## THE BREAM BAY NEWS

is published by Bream Bay News Ltd. Address : RD 2, Waipu  
Phone : (09) 432 0209 Mobile : 027 432 0070  
Editor : Marilyn Cox,  
Accounts : Susan McRae  
Advertising design : and website  
maintenance Megan Lea.  
Printed by Horton Media

## WAIPU LOTTO & POST



Lotto  
Postshop  
Photocopying

Emailing  
Newsagents  
All stationery needs



The Centre, Waipu

Phone 432 0900

As seen on Grand Designs 2019

**COASTAL CONSTRUCTION PROJECTS**

0274 320 007

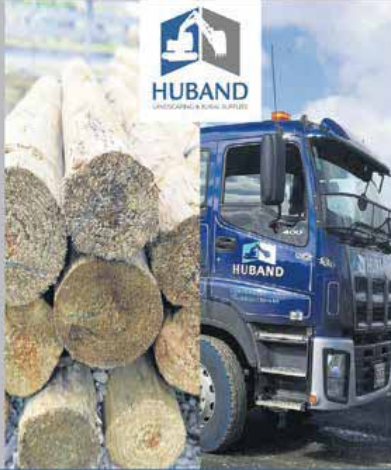
REGISTERED MASTER BUILDER QUALIFIED TRADESMAN CARPENTERS MARCUS@CCP.NZ WWW.CCP.CO.NZ

**Landscaping Supplies:**  
Waikato Screen Topsoil  
Bark  
Woodchip  
Mill Bark  
Post Peelings  
Compost  
Crushed Shell  
Topsoil  
Limestone Chip  
Daltons Garden Mix

**Aggregate:**  
Gap: 20, 40, 63  
Riverstone  
Sand  
Belt Dust  
40/20 Drainage Metal  
Builders Mix  
Cement

**Timber/Fencing Supplies:**  
Rails, Posts  
Slats, Strainers  
Fence Battens  
Palings  
Stakes  
Fencing Wire  
Farm Gates & Hardware

**Drainage:**  
PVC Fittings  
Alkathene  
Draincoil



**Water Tanks:**  
Aqua & Bailey Brands

**Drainage & Septics:**  
Land Drainage  
Urban Rural Drainage  
Water Pipelines  
Culverts  
Septic Systems  
[RX Plastics & Biorock]

**Siteworks:**  
Retaining Walls  
Piling  
Driveways  
Carports

Serving Locals, Supporting Locals, For Over 30 Years

2088 Paparoa valley Rd, Paparoa

Opening Hours: Mon-Fri (7am-5pm) Sat (8am-12pm) Sun (Closed - Family Time)  
Email: admin@huband.co.nz | Phone: 09 431 8339 / 0800 234 449

## EDITORIAL

# Suggestion by the late Craig Brown worth following up on

Despite most of Bream Bay's iconic annual summer events being cancelled, people have flocked here this summer. The sea water is like warm velvet and people of all ages are out enjoying the waves and playing on the sand.

There is ongoing pressure from the pro-development lobby to build conference centres, hotels etc. that will supposedly attract tourists to Northland but it seems obvious to me that the beaches and coastline are our biggest asset and, therefore, looking after them should be our highest priority.

This summer the Department of Conservation is taking a harder line on motorbikes, which for years have been unchecked and are wrecking the dunes north of the Waipu estuary and south of Mair Rd. at Marsden Point.

Members of the Forest and Bird Protection Society and the Bream Bay Coastal Care Trust do their best to protect the shorebird breeding sites at both the Ruakākā and Waipu estuaries from dogs, vehicles and unthinking and/or uncaring humans. It's a huge effort sitting out there day after day in the hot sun to warn people away from where newly hatched oyster catcher and dotterel chicks are making their first foraging expeditions to the water's edge.

Apart from a couple of no vehicle zones on either side of the Ruakākā estuary, vehicles are still permitted to drive on the beach. Last week I observed a young man ride a very noisy trail bike through the crowds at Uretiti. I went over to talk to him. He said he was being careful. I think this is a crazy situation. Why should children playing on the beach and their parents, grandparents or guardians watching over them have to be wary of motorbikes? I took a photo of the bike and a young woman threatened to smash my phone. I get into frequent arguments with people in these situations. I noted that the bike was unwarranted and unregistered so should not have been ridden on the beach. This is the current legal situation and you work with what you have but I think it's a bit silly. A registered, warranted motorbike poses as much threat to children and causes as much disruption to other peoples' peaceful enjoyment.

It is good to know that all that toxic solvent has been cleaned up from the Ruakākā solvent recycling plant. It has taken a long time. The Whangārei District Council has taken a lesson from this and has upped its game when it comes to monitoring resource consents.

But there is lots more work to do. What are we going to do about all that black plastic left over from a fence installed in the 1980s to protect the Marsden A and B power plants from erosion? For years it has been buried deep in the sand but it is now being exposed by the tide. It will take a major effort to dig it all up. Who is going to pay?

How do we stop the back dunes south of Mair Rd. being used as a rubbish dump? The conservation land behind the beach is full of invasive weeds. There are examples where duneland has been restored with native vegetation at Uretiti, the Ruakākā Dune Lake and the Ruakākā Estuary. These successes point to what needs to be done across the whole expanse.

Uncontrolled beach access across the dunes has led to erosion. The unbroken patterns of the native dune species pale green spinifex and gold - green pingao reaching down across the fore dunes to the beach are lovely when you understand their function. We need to teach people about the dynamic interplay of these dune species with storms and shifting sand.

To cope with the crowds of visitors we need more clearly defined beach walkways and we need to block off all those unofficial vehicle beach entrances.

The late Craig Brown, former mayor of the Whangārei District who grew up and lived most of his life in Bream Bay, suggested once that if we established more parking and picnic areas with walkways to the beach alongside, people might not feel the need to drive their vehicles across the dunes. I think this is an idea worth following up on.

Marilyn

# MAGIC TYRES

Large selection of used & new tyres  
Car & Trailer Rims

Ph. 438 3534

103 Port Rd., Whangarei



## Big crowds at the beach



A big crowd on the beach at Waipu Cove on the 5th January. Kevin Wigmore who took this photo reports there was hardly any parking at the Cove or at Lang's Beach, it was so busy.



Stella Hanekom, aged 10, enjoying the surf at Ruakākā Beach



Brothers Noah Brooke, aged 4, and Flynn Brooke - 3 found space on a crowded Ruakākā Beach to build a sandcastle.



**Accounting  
by Heather**  
LIMITED

*Local, professional, and discreet.*

**Tax and Accounting work for**  
Local Businesses  
Self-employed Contractors  
Rental Properties  
Overseas Pensions  
Dividends

**Heather Jacobson**  
021 527 939  
acctbyheather@gmail.com



**ATLAS**  
QUARRIES  
CONCRETE

Thinking concrete but don't know where to start?

**Think Atlas Concrete**

- We quarry the aggregate
- We manufacture the concrete
- We site visit to advise the best options
- We give you the choice of mix and colours
- We give a choice of local placers for you to choose
- We manufacture concrete to your requirements
- We stand by our product, you stand on it

**Atlas Concrete**  
**Your First Call for Concrete**  
**Ph: 0800 888303 - Brynderwyn**  
**or 432 5030 - Ruakaka**

**OPEN HOME**



**Ruakaka 21 Flax Street**

3 1 2 2

**Price by Negotiation**

**View Sun 11am-12pm**

**Jan Anderson Halliday** 021 380 032 jan.anderson@bayleys.co.nz

MACKYS REAL ESTATE LTD, BAYLEYS, LICENSED UNDER THE REA ACT 2008

**Relaxing riverside home - tranquil and fun**

This modern open plan home flows effortlessly to the wide outdoors with views out across Ruakaka River. There is always something wonderful to watch or do on the river with kayaks, paddle boards, fishing and plenty of bird life. The covered deck is a perfect spot for relaxing on the hammock or eating alfresco. With extra workshop space there's room for all the hobbies. There is loads of off-street parking and plenty of room for a boat or campervan. Buy now and transition later for this ideal get-a-way.

bayleys.co.nz/1060272

**BAYLEYS**

## Letters to the Editor are very welcome

Email them to: [breambaynews@xtra.co.nz](mailto:breambaynews@xtra.co.nz)  
 , Drop them off at the Waipu or Ruakaka Lotto shops  
 Or post them to:  
 The Bream Bay News, 547 Mountfield Rd., RD2 Waipu,  
 Postcode 0582



**Camp Waipu Cove**

Phone 432 0410      [www.campwaipucove.com](http://www.campwaipucove.com)  
 869 Cove Rd, Waipu

**New accessible cabin is now complete and open for bookings.**

Quality Award Winner      Holiday Park      Travellers' Choice      TripAdvisor



**BREAM BAY GREENWORLD**

A unique wholesale nursery open to the public

**Open hours:**  
 Tues to Sat 8.30 to 4.30

656 One Tree Point Rd, Ruakaka.  
**Contact:** John Thode  
 Phone 09 432 7048 or 027 495 2441  
**email:** [jonwaves@xtra.co.nz](mailto:jonwaves@xtra.co.nz)  
 See the plant list on our website  
[breambaygreenworld.nz](http://breambaygreenworld.nz)  
**Phone 027 495 2441**

## LETTERS

### Lots of work by lots of people to build the Waipu Skate Park

Now that the Waipu Skate Park is open, my hope is that all who use it will treat it with respect, look after it and, most of all, enjoy using it.

It's taken a long time from idea to fruition, a lot of people have put many hours into this project, I'll try and mention a few. Mary Rodgers who drew up one of the original plans in the 1980s, Rod Bowie in the 80s and 90s, The Reverend Peter Dunn, a great supporter, who was involved when we went to the Hearings Commissioner in 2002. The late Leone Bucknell and the youth of Waipu who arranged a disco in the Caledonian Hall to raise money for the skate park.

Adam Wellford of MaXar Architecture, who drew up plans for two skate parks that never got off the drawing board for various reasons. Shelley Deeming and Phil Halse, our councillors, who supported the idea for I can't remember how many years.

Sue Hodge, Whangarei Council Parks Manager and her team that made it happen. The Waipu Lions who held on to the money that was either donated or raised by the youth. Ron Cave who has donated the proceeds of the last Waipu Car Show for the next phase, a half court. Vanessa Martinovich, the Whangarei District Council engineer, Steve Bowling Contractors and their workers. The many committees who gave their time and there were quite a few. Malcolm Norton who stuck with it to the end and encouraged me when I



Pairea Pirihi of Patuharakeke conducted a formal blessing at the completed first stage of the Waipu Skate Park in early morning rain on Tuesday 14 December.

needed it. Last but not least, our committee who had the good fortune to be able to deliver a great asset to the Waipu community: Sally McKay, Ella Buckle, Malcolm Norton, Amber Porter and Jordon McDonald.

*Peter Blanch  
 Waipu*

### Please consider godwits resting on the beach

The question should not be are you double vaxxed with a booster but instead: Do you recognise any animal that deserves the respect that you as an animal want? Maybe you have a cat, a dog or a horse. You respect them right? Actually birds deserve respect, too. They like to rest, eat, be in the right habitat for certain conditions. We go to the super market, we shelter under the broolly, we have a snooze to recoup our energy.

This morning at high tide when 1500 godwits were trying to find the right habitat, there were some very strange human animals. They had helped build the surf club, they wanted to walk in amongst the resting

birds, they were professional photographers, they had raised funds. They had rights!

Never mind that the godwits were only wanting what you regard as your rights every day. To those visitors who recognised this the godwit carers thank you very much -- for not being aggressive, or shoving us or using up the birds' energy or shouting at us. May you be ambassadors for the rest of the visitors.

*Bev Woods  
 Waipu*

### To the anonymous person

To the anonymous person who went to the trouble of typing out a letter and then dropping it into my mailbox, I do not publish anonymous letters except when the writer has a good reason for not supplying their

name. Holding an anti-vaccination stance does not entitle you to this consideration.

*Marilyn Cox  
 Editor, The Bream Bay News*

## Building in Whangarei, Kaipara, Far North



**Kelly 200 sqm**

**\$432,000 incl gst**

Includes: plans, consent, kitchen, appliances, tinted double glazed windows, tiles, carpet, blinds, heatpump.



Wayne Pickerill  
 Managing Director

"Hi, I'm Wayne Pickerill, Managing Director and Project Manager for your new Fowler Home. Enjoy quality and all the benefits of dealing with an efficient, low overhead, nationwide company, where I will take a personal interest and be involved through to completion."



**FOWLER HOMES™**

More designs at [www.fowlerhomes.co.nz](http://www.fowlerhomes.co.nz) or visit our office at 63 Walton St, Whangarei. Phone Wayne Pickerill 438 4840



## New changing rooms for Ruakākā Beach

By next summer there should be a new toilet block and changing room at Ruakākā beach alongside the surf club.

To help cope with this summer's crowds two portable toilets have been placed alongside the existing toilet block.

The new block will be built near the existing public toilets and will consist of three unisex toilets - one of them with wheelchair access, a women's and a men's changing room and an outside shower.



Concept drawing of the new Ruakākā Beach changing rooms.

The existing two unisex toilet building will remain. Grant Alsop of the Whangarei District Council said the new changing room block would cost somewhere between \$150,000 and \$200,000. Quotes would be called for in April and he was hopeful construction work could begin in April.

Last month he met with some of the neighbours to listen to any concerns they may have.

Tania Aherns of the Ruakaka surfclub was satisfied when shown a map of where the new block would be situated that it wouldn't interfere with the vehicle entrance to the surfclub and Grant of the Bach Café was pleased it would be built into a sandbank with much of it hidden from view with plantings planned along its back wall.

## Anniversary weekend art exhibition

"We are certainly going ahead with the Art Expo on Anniversary weekend," said Maree Gutry, one of the organisers of the Bream Bay Combined Art Group exhibition and sale in the Marsden Cove Marquee when the Bream Bay News checked to make sure.

Maree said the group is, "Excited and delighted" to be holding their exhibition and sale again this year on 29 and 30 January after the disappointment of not having, one last year.

"It does look like we will be operating under Red so

the 'My Vaccine Pass' will be a requirement."

The group believes this is the biggest art exhibition and sale north of Auckland. The work of 50 plus artists will be on display with paintings, fibre art, ceramics, jewelry, and outdoor garden art up for sale. There will also be live demonstrations of artists at work.

The exhibition/sale/demonstrations will run from 10am to 4pm on both days. Entry is by gold coin donation. Eftpos available. Food carts will be present.

# BIG RED

## TRUCKING

Owner /Operator Duncan Mack-



GENERAL CARTAGE SERVICE

Metal / Topsoil / Sand / Manure / Hay / Silage



WATER

Prompt Delivery And Reliable Service.

Healthboard Approved Drinking Water Carrier.

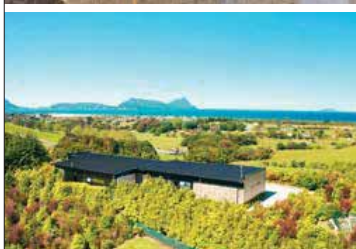
Call 021 070 8211

## WATER TANK LEAKING ??

- Most leaks fixed whilst tank is full
- Free quotes
- 35 years experience (NZ- WA- SA)
- Testimonials available
- Permanent repairs
- Drinking water approved



Ken Roberts 021 028 81751  
ken@concretewaterproofing.net.nz



## Style, Finesse & Panoramics to Impress in Ruakaka/Waipu

RayWhite.

3+1 1+1 1 2+1 5 6 2.253 ha L

Edgy with a chic industrial design aesthetic, executed in a composite of polished concrete block and NuWall Aluminum accents broken by vast double glazing.

Interiors showcase a designer kitchen with engineered stone work surfaces, scullery and label appliances interfaced with generously spaced casual and formal lounging/dining areas. Wall-to-wall stackers retract for seamless cohesion with a sprawling patio running the entire eastern elevation taking in sweeping panoramas of ocean and islands while capturing sensational sunrises from every room.

Three bedrooms are supported by two bathrooms looking stunning in an eclectic mix of concrete and ceramics, selectively incorporating his/her basins, suspended vanities and frameless glass showers with directional and rain heads. Further niceties and practicalities include a media room with an external entrance which makes for an ideal office if you want to work from home and the carpeted internal access triple-bay garage accommodates the daily drives plus the weekend.

The sea view 'guest house' (consented as a new shed) with adjoining high stud two-bay garage/workshop is accessed by a separate driveway and neatly nestled amongst the greenery.

*If you're a private person and you appreciate a private world, this property is simply unsurpassed. It is, quite frankly, superb.*

**Auction** 12:00 pm Friday 28 January (unless sold prior)

**View** Private Appointment  
(double vax required or negative test within 24 hours)



Scan to view  
property video

**james alexander**  
Auctioneer | Marketer | Negotiator  
021 878 178

# Selling great Northland properties

**MANGAWHAI | BREAM BAY | WHANGAREI**



**Helen Powell**

Residential Sales

021 644 234

[h.powell@barfoot.co.nz](mailto:h.powell@barfoot.co.nz)



**Mike Scott**

Residential/Lifestyle Sales

021 463 224

[m.scott@barfoot.co.nz](mailto:m.scott@barfoot.co.nz)

“

**Thank you** to all our past and current clients. Your support has been invaluable.

”



Barfoot & Thompson  
**Top Salesperson**  
Whangarei Branch 2021\*



Barfoot & Thompson  
**Top Salesperson**  
Mangawhai Branch 2021\*

\*Year ending 31 March 2021

**BARFOOT  
& THOMPSON**

LICENSED REAA 2008





## POLICE REPORT

### Double fatality when vehicle crosses the centre line on SH1 at Uretiti

An 80 – year – old Maungaturoto woman died at the scene and her husband (who was also 80 - years - old) two days later in hospital as a result of a head on collision on State Highway One near the Waipu Golf Course just before 1pm on Thursday 23 December. One of the vehicles appears to have crossed the centre line to crash into the couple's northbound vehicle. The SUV driver was uninjured.

### Driver lucky to survive after crash brought down large concrete power pole

Senior Sergeant Simon Craig feared the worst when he arrived at the scene of an accident on State Highway One near the Millbrook Rd. intersection on 5 January. A vehicle had crashed into a large concrete power pole on the side of the road snapping the pole in half. However, he was surprised to find the driver, the sole occupant of the vehicle, walking around nearby. A 19-year-old Auckland man will be facing dangerous driving charges in the Whangārei District Court.

### Behaviour of holiday makers and beach goers has generally been good

Sergeant Craig said behaviour amongst holidaymakers and beach goers has generally been very good this summer. The traditional New Years Eve party at the Uretiti campground went without incident helped by the fact that this year only campers were permitted to attend.

When the road checkpoints at Uretiti and Maungaturoto were stood down extra Police were available to patrol the roads and beaches.

It has also helped that the Department of Conservation has made more effort to enforce the ban on vehicles in the Bream Bay dunes. Sergeant Craig said this has made policing the beach easier as if a vehicle doesn't have a current registration and warrant of fitness it cannot be used on the beach where road rules apply.

### Man in custody after attempting to ram vehicle on Brynderwyns

Police were alerted to two vehicles driving dangerously on the Brynderwyn Hill on Saturday 4 January. This turned out to be a family harm incident where one of the drivers was attempting to ram the other's vehicle. Police were able to intervene when his vehicle crashed. A 34-year-old Bay of Plenty man is in custody and will appear in the Whangārei District Court on 28 January. He faces serious charges of domestic violence and dangerous driving.

In total Police attended 13 family harm incidents in the two weeks leading up to Friday 10 January.

### Taken to hospital with head injuries after falling from vehicle driving on the beach

An 18-year-old man was taken to Whangārei hospital with head injuries after he fell from a vehicle travelling on the beach south of Tip Rd

### Woman to appear in court after breath test result more than two times over limit

At 6.30am on New Years Day Police stopped a vehicle on State Highway One at Ruakākā. The driver was breath tested and returned a reading of 532 micrograms of alcohol per litre of breath, more than twice the legal limit of 250 micrograms. A 32-year-old Kaitiaki woman will be appearing in the Whangārei District Court on drink driving charges.

### A great alternative to large general waste bins for smaller clean ups



It costs \$30 to hire a Portabin and then \$180 for us to pick up the bin once it is filled

You can collect a Portabin from our yard, from Waipu Hammer Hardware or Mangawhai ITM Kaipara Landscape Supplies Maungaturoto



Ph. 0800 336 673

[www.marsdenmetalsgroup.co.nz](http://www.marsdenmetalsgroup.co.nz)

### THE NEXT PUBLICATION DATE

of the Bream Bay News will be Thursday 27 January  
The deadline for all copy is 4pm on  
Wednesday 19 January



53 Prescott Road, Ruakaka

3 1 1 2 2 2 2+ 1.91 ha

Pleasant Surprises Await at this Ultimate Kiwi Lifestyle - located approx. 5km to the Ruakaka Surf Beach and approx. 500 mtrs to State Highway 1.

- 3 bedrooms | 2 bathrooms | 151 sqm home on 1.91 ha
- Approx. 12m x 7m shed | stunning views
- Attached garage | modern kitchen with added features + much more
- Open Homes:- 11:00am - 11:30am - Sunday 16th January or view by appt.



Carleen Still 021 148 9804

[carleen.still@raywhite.com](mailto:carleen.still@raywhite.com)

Licensee Salesperson. The Real Estate Shop Ltd. Licensed REAA (2008)

## HOUSEHOLD WATER SUPPLIES

the  
water  
guy

Proudly supplying  
the Bream Bay area.

Ministry of Health  
approved supplier

0800 WET WATER  
0800 938 928





# Stay close and go far with NorthTec

## OPEN DAY\*

- Construction
- Carpentry
- Architectural Technology
- Health and Safety
- Painting (Trades)
- Plumbing

**Thursday 27th  
January 10am-2pm**

**NORTHTEC  
GATE 1, RAUMANGA  
VALLEY ROAD,  
WHANGAREI**

- Business
- Accounting
- Foundation Studies
- Information Technology
- Management

- Conservation
- Apiculture (Beekeeping)
- Agriculture
- Agribusiness
- Environmental Science
- Forestry
- Horticulture
- Sustainable Primary Production

**Study options  
available in the  
following areas**

- Toitu Te Reo (Māori Language)
- Toi Te Wai-ngarahu (Māori Arts)
- Creative Writing

- Enrolled Nursing
- Health and Wellbeing
- Nursing
- Social Services
- Sport and Recreation
- Study and Career Preparation

- Cookery
- Baking
- Food and Beverage
- Hospitality
- Travel and Tourism
- Beauty Therapy
- Hairdressing

- Civil Engineering
- Commercial Transport
- Automotive Engineering
- Electrical Engineering
- Mechanical Engineering

**\*VACCINATION  
REQUIREMENTS APPLY**

☎ 0800 162 100  
✉ [study@northtec.ac.nz](mailto:study@northtec.ac.nz)  
🌐 [northtec.ac.nz](http://northtec.ac.nz)





## Many local events cancelled due to Northland's red light status

A number of events have had to be cancelled due to Northland's vaccination levels still not being high enough for the region to move into the Orange level in the Covid 19 protection traffic light system.

Under red – where Northland remains no more than 100 people can attend an event while under the orange level there is no restriction on how many people can gather at an event.

The Waipu and Ruakaka Christmas parades both needed to be cancelled because of this restriction. The Waipu Highland Games were cancelled months ahead of when they were due to be held on 1 January 2022 due to uncertainties about bringing competitors from around the country and from overseas together. As it turned out this was a good decision as the usual 3,000 spectators the games attract would not have been able to gather in the Caledonian Park.

The big street and park market after being postponed on Labour weekend was held on Sunday 19 December but without stalls in the Celtic Barn and vaccine pass requirements for entry into the Coronation Hall.

The Ruakaka Racecourses biggest event of the year due to be held on January 6 was cancelled.

The racing club operations Manager Rebecca Swords emailed the Bream Bay News with the sad message, "Given the Covid restrictions and the likelihood of travel delays for Northland the Whangarei Racing Club has decided that the risk and uncertainty of the January 6th race meeting given the significantly reduced attendance and attracting sufficient horse starters is too great a risk to proceed with the meeting, which was

moved to Rotorua.

Mike Beazley, Whangarei Racing Club Chairman, said "The Club, like many Northland sports clubs and event businesses has been significantly disadvantaged by the Covid restrictions and the decision to cancel its biggest attended meeting of the year was made with major disappointment for our local owners, supporters, trainers, members and the many holiday makers who include the day as part of their vacations."

The next race meeting at Ruakaka is scheduled for Wednesday 13 April.

Yet another casualty of the Northland's red traffic light status is the Waves music concert which was due to be held at Tahamoana Farm on 22 January. A second concert – Rock'n Rods, which would have been held at Tahamoana on 6 February was also cancelled.

While most of Bream Bay has hit the 90% first Covid 19 vaccination dose level, with Marsden Bay now at 91.8% second dose and Ruakaka – 92.2% first dose – 87.8% second dose – the level of vaccinations in Waipu remains stubbornly low – 87.4% first dose (with no movement in the past week) and 85.2% first dose.

While deprivation has often been cited as a reason for low vaccinations levels in various parts of New Zealand this is not a factor at play here. Deprivation levels set according to information gathered at the 2018 census, place Waipu at level 5 on a scale of 1-10 where 10 is the highest level of deprivation. Ruakaka on the other hand, has a deprivation level of 9



**MILLBRIDGE**  
**ENGINEERING**

ON SITE WELDING  
MOBILE SERVICE  
HEAVY & LIGHT FABRICATION  
REPAIRS & MAINTENANCE  
ALUMINIUM & STAINLESS

**Rory McLean** ☎ 021 55 77 94 | 09 556 0558

✉ rory@millbridge.co.nz 🌐 www.millbridge.co.nz

**Phone the BREAM BAY NEWS -**  
**432 0209 or 0274 320070**  
**or email: breambaynews@xtra.co.nz**  
**if you know of something interesting**  
**going on in Bream Bay.**

# YOUR NEXT APPRAISAL IS ON THE HOUSE!

Call our **Bream Bay** team today!



**Andy Dalton**  
027 595 6579



**Angelique Hartnett**  
027 435 6411



**Ashleigh Louise**  
027 733 5703



**Janice Chisholm**  
021 541 543



**Trent Warren**  
021 55 1990

[barfoot.co.nz/breambay](http://barfoot.co.nz/breambay)

**BARFOOT & THOMPSON**  
LICENSED REAA ROOR

# goodGround Auction



## Auction

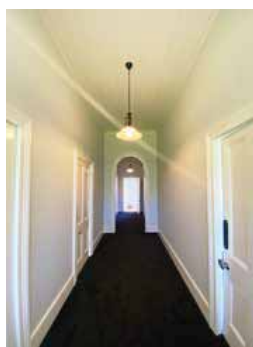
SATURDAY JANUARY 22<sup>ND</sup>

4 2 120M<sup>2</sup> 8130M<sup>2</sup>

LOT 1 MILLBROOK ROAD, WAIPU

This fully renovated 1920's Villa is ready for you to call home. Located on lovely flat to gently rolling pasture this 8130m<sup>2</sup> has it all. Fully fenced, overlooking a meandering stream, large shed/garage and only 10 minutes to Waipu, what more could you want. The kitchen has been finished to a superb standard with large pantry and private breakfast deck that opens into the living/dining room. Leading off the central corridor you have the master bedroom with en-suite bathroom and a good sized walk-in wardrobe. The Villa is rounded off with 3 regular bedrooms and the lovely family bathroom with bath and shower. The covered deck gives this Villa that extra traditional charm and you will be thankful for it in the middle of the long Northland summers.

This property is perfect for you, do you want a low maintenance easy living property? Do you want to have some animals or run a small holding? Are you looking for your home away from home? This Villa is all of these and more! To be sold by Auction on the 22nd January 2022, unless sold prior.



**William Browning**  
020 4076 8976  
william@goodground.com  
Licensed REAA 2008



*Your locally owned  
Real Estate company.*

3 The Centre, Waipu  
www.goodground.com  
09 432 1077



# YOUR LOCALLY OWNED INDEPENDENT REAL ESTATE COMPANY




**HARBOUR VIEWS!!**  
15 AWATEA STREET, RAUMANGA  
PRICE: INTEREST MID \$600'S  
LAND AREA: 865<sup>M2</sup>  
REFERENCE: GGW60292  
JENNIFER STARR  
021 023 78871  
JENNIFER@GOODGROUND.COM




**DAIRY FARM**  
OMAHUTA ROAD, MANGAMUKA  
PRICE: ON APPLICATION  
LAND AREA: 319<sup>HA</sup>  
REFERENCE: GGW30165  
LYNDA O'RILEY  
021 142 7024  
LYNDA@GOODGROUND.COM



**STYLISH TOWNHOUSE**  
16B BERMUDA PLACE,  
ONE TREE POINT  
PRICE: OFFERS OVER \$769,000  
LAND AREA: 865<sup>M2</sup>  
REFERENCE: GGW60285  
LYNDA O'RILEY  
021 142 7024  
LYNDA@GOODGROUND.COM



**RUAKAKA BEACH LODGE**  
3 TAOTAH WALK, RUAKAKA  
PRICE: BY NEGOTIATION  
LAND AREA: 1,027<sup>M2</sup>  
REFERENCE: GGW11712  
WILLIAM BROWNING  
020 4076 8976  
WILLIAM@GOODGROUND.COM



**THE SEARCH IS OVER**  
LOT 2 MILLBROOK ROAD,  
WAIPU  
PRICE: BY NEGOTIATION  
LAND AREA: 2.19<sup>HA</sup>  
REFERENCE: GGW60288  
WILLIAM BROWNING  
020 4076 8976  
WILLIAM@GOODGROUND.COM



**DREAM IT BUILD IT LIVE IT**  
LOT 6 MILLBROOK ROAD,  
WAIPU  
PRICE: BY NEGOTIATION  
LAND AREA: 8940<sup>M2</sup>  
REFERENCE: GGW60290  
WILLIAM BROWNING  
020 4076 8976  
WILLIAM@GOODGROUND.COM



**ESCAPE TO THE COUNTRY**  
2694 SH14, WHEKI VALLEY  
PRICE: OFFERS OVER  
\$1,495,000+GST IF ANY  
LAND AREA: 29.22<sup>HA</sup>  
REFERENCE: GGW80012  
JENNIFER STARR  
021 023 78871  
LYNDA O'RILEY  
021 142 7024



**MULTI ZONE SECTION**  
LOT 54 POKAPU ROAD,  
RUAKAKA  
PRICE: OFFERS OVER \$730,000  
LAND AREA: 2,000<sup>M2</sup>  
REFERENCE: GGW40028  
LYNDA O'RILEY  
021 142 7024  
LYNDA@GOODGROUND.COM



**LEAVE TOWN**  
RUAPEKAPEKA ROAD, TOWAI  
PRICE: \$799,000  
LAND AREA: 2455<sup>M2</sup>  
REFERENCE: GGW60283  
JENNIFER STARR  
021 023 78871  
LYNDA O'RILEY  
021 142 7024



Outlines indicative only

## HUGE DEVELOPMENT INVESTMENT OPPORTUNITY

41 McCATHIE ROAD, RUAKAKA  
LAND AREA: 41<sup>HA</sup>

THE MARSDEN TECHNOLOGY PARK  
LIGHT INDUSTRIAL ZONE PRECINCT.  
BRAND NEW RESOURCE  
CONSENT!

GGW40049 - PRICE ON APPLICATION

LYNDA O'RILEY JENNIFER STARR

021 142 7024

021 0237 8871



Boundary lines indicative only

## THREE RIVERS ESTATE

38 FERRY ROAD, WAIPU  
SECTIONS RANGING FROM 350<sup>M2</sup>  
TO 680<sup>M2</sup>

PRICES STARTING FROM \$379,000

BRAND NEW SECTIONS

"IT'S WONDERFUL IN WAIPU"

WILLIAM BROWNING LYNDA O'RILEY

020 4076 8976

021 142 7024



Your locally owned  
Real Estate company.

3 The Centre, Waipu  
www.goodground.com  
09 432 1077



## BREAM BAY STORAGE

INSIDE/OUTSIDE storage at 50 Cove Rd., Waipu

Free phone. 0800 432 135  
enquiry@breambaystorage.co.nz

www.breambaystorage.co.nz

## RUAKAKA SAFE STORAGE

99 MARSDEN PT ROAD, RUAKAKA

92 Units from 6 x 3 to 1 x 1

Each unit individually alarmed and monitored

Electrified security fence

Ph. 0508 273 262 or 0275 310 788

CLEAN - DRY - SECURE

## BREAM BAY FIREWOOD

Graham Matthews

Phone 027 432 1016

456 South Rd., Waipu

Email: gmmatthews@xtra.co.nz

## Bream Bay Garden Maintenance

Spring Tidy Up · Landscaping · Planting

Hedges trimmed · Trees trimmed

Weed control · Pruning · Rubbish removed

House washed · Water Blasting · Building

Painting · Free quotes

**NO JOB TOO SMALL**

One Offs, Weekly, Fortnightly or Monthly

Phone Marcus 021 343 727

## Celebrating 25 years service with the Ruakākā Fire Brigade



Brian Weir receiving his 25 year service certificate from Ruakākā Fire Chief Darrell Trigg

Brian Weir was presented with a certificate acknowledging his 25 years service to the Ruakākā volunteer Fire Brigade last month.

His first formal day with the brigade, after he had been through all the Police and fitness checks, was on 19 December 1996.

Ruakākā Fire Chief Darrell Trigg said, "Less than 5% for firefighters who join achieve the milestone of 25 years' service and it is a significant achievement."

The certificate comes ahead of an official function to be held some time this year when he will receive his Gold Star Medal.

Brian was persuaded to join the brigade by the late Jono Simons who was renowned as a practical joker. In 1996 Jono and Brian were both teachers at Bream Bay College. Jono was an enthusiastic member of the Ruakākā Brigade and was always trying to persuade Brian to join up. One Monday evening at around 8.30pm, after a training session, he arrived at Brian's house in full fire fighting breathing apparatus and intoned in a sonorous Darth Vader voice "Brian – Join the Force."

Brian was born in Scotland but moved with his parents to Christchurch when he was just two years old. He came to Bream Bay to take up a job as head of technology and graphics at Bream Bay College. He said the College was very supportive of his brigade

role providing cover for he and Jono to leave their classrooms in response to call outs.

Although he enjoyed working with young people Brian said the job changed over the years with more reporting requirements and sixteen years ago he left the college to take up a position as a fire safety officer at the Marsden Point refinery. This job will disappear when the refinery ceases its operations in June but Brian has a number of possibilities

lined up for the future.

How much has the volunteer work of the Ruakākā Fire Brigade changed in those 25 years? Brian said when he began the brigade was lucky to get 50 call outs in year. Last year the tally was 148.

Another change is that there are now more women joining up. Ruakākā currently has five women fire fighters.

While he didn't want to single out any particularly memorable missions he had gone out on he said there have been all sorts of things from rescuing a cat from a tree to saving a child who had climbed through an upstairs window of a two storey house. He has attended a plane crash and there have been lots of car accidents although Brian said these dropped in number when passing lanes were installed on State Highway. The Ruakākā Brigade looks after the highway from the Waipu Golf Club to the Mata Hall and all the roads in between stretching inland as far as Waitotira.

Around ten times a year it gets asked to send a cover crew and fire appliance to Whangārei, usually when the Whangārei teams are engaged at a road accident. Brian said this has a domino effect with the Waipu Brigade then providing cover for Ruakākā.

Fire brigades are now called on to attend medical events although Brian said with Bream Bay St John located nearby this change has not had such a big impact on the Ruakākā Brigade as it has for others. The fire brigade and ambulance service work cooperatively.

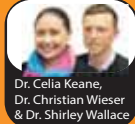
It's been a big commitment over all those years with training every Monday night for two and a half hours and all those call outs. There are also weekend training camps and special events such as the annual fire brigade visit to the Ruakākā Beach Holiday Park at the height of the summer holiday season where a lot of water gets splashed around and brigade members sell raffle tickets.

But training with the brigade led to the development of new skills which helped him into the refinery job and he has made many good friends.

"Even when people move away, we retain our friendships. The brigade is like one big family." Brian's advice to anyone interested in joining is to come along to a training session at the station in Princes Rd. at 7pm on a Monday evening.



SKIN CANCER DOCTORS



09 438 2188

131 Lower Dent Street, Whangārei  
admin@skincancerdoctors.co.nz  
skincancerdoctors.co.nz

We are a primary care skin cancer clinic located in the Whangārei Town Basin. We focus on the early diagnosis and effective treatment of skin cancer in a friendly and welcoming environment.

- ✓ Full Body Skin Checks
- ✓ Dermoscopy Analysis of Moles
- ✓ Surgical & Non-Surgical Treatment
- ✓ No Referrals Needed
- ✓ Southern Cross Affiliated Provider
- ✓ Accredited Skin Cancer Doctors with the Skin Cancer College of Australasia





## Men's support centre opens in Ruakākā



Bream Bay Educare Centre children cut the ribbon at the opening on Tuesday 14 December of the new SafeMan SafeFamily men's centre in Takutai Place, Ruakākā. Dignitaries and colleagues of the centre's founder Phil Paieka from around Northland attended and spoke about the mana of Mr. Paieka who has set up the new base for his long time work supporting families and men.

## Winning Christmas letter boxes



Around 50 Waipu households took part in the inaugural Waipu Christmas Letter-box Decoration competition. Juanita McGoldrick of Promote Waipu said the judges had a hard job picking the top three and then 32 "highly recommended" entries. The top three winners were delivered their prizes on Christmas Eve by Santa in the old Waipu Fire Truck. 1st Place was taken by The Beaton Clan above, 2nd Place The White Family, 3rd Place Nico Keepa. They all received vouchers to spend in local businesses..

## The Waipu Christmas Market



Pablo - a.k.a. Paul Barton of Waipu entertains at the Waipu Christmas Market held on Sunday morning 19 December.

## Waipu Tennis Club update

*By Paul Ramsay*

Season's Greetings to all readers and tennis club members. If Santa was kind you possibly received some tennis gear that needs a try out soon. Club nights start again on 18 January at 6pm. There are a couple of Tuesday nights to get the cobwebs out then our competitions for 2022 get underway in February.

Tuesday nights will follow the same format as before Christmas. Wednesday night sees the reintroduction of ladies' nights, while Thursday night is the Sawmill competition. Go along on the practice nights or contact Steve Abercrombie if you are keen to be included in the mix. Numbers are limited in some competitions.

If you are starting out in tennis now is the time to get involved with subs half price. To play in the Sawmill competition you don't even need to be a member but your team must pay a fee. Tennis carries on throughout the winter after the competitions above are finished.

Our Waipu One Set Wonder tournament is on February 19 starting at 12 noon and going through until about 7pm with dinner and great prizes included. This is open to all players no matter what your ability. It is graded so you should end up playing people of similar ability to yourself.

Junior and Intermediate tennis will start once school resumes.

Remember to check our Facebook page for what is going on at the club.



## MORE THAN A MUSEUM OF TIMBER

5 Church Road, Matakoho, New Zealand

[www.kaurimuseum.com](http://www.kaurimuseum.com)

## MARSDEN POINT HIGH TIDES

	AM		PM	
Thu 13 Jan	5.00	2.3	5.11	2.3
Fri 14 Jan	5.56	2.3	6.04	2.3
Sat 15 Jan	6.29	2.3	6.55	2.3
Sun 16 Jan	7.36	2.4	7.42	2.3
Mon 17 Jan	8.19	2.4	8.27	2.3
Tue 18 Jan	9.00	2.5	9.09	2.4
Wed 19 Jan	9.39	2.5	9.50	2.4
Thu 20 Jan	10.17	2.5	10.31	2.4
Fri 21 Jan	10.56	2.6	11.12	2.4
Sat 22 Jan	11.35	2.6	11.54	2.5
Sun 23 Jan	~	~	12.16	2.6
Mon 24 Jan	12.38	2.5	12.59	2.5
Tue 25 Jan	1.25	2.4	1.45	2.6
Wed 26 Jan	2.16	2.4	2.35	2.5
Thu 27 Jan	3.14	2.4	3.30	2.5
Fri 28 Jan	4.17	2.4	4.31	2.5

## Waipu Surf Lifesaving Club gets some new gear



Nick Brothers of Waipu ITM, who sponsored the new boat spraying bubbles over the craft following a blessing ceremony

Waipu Cove Surf Life Saving Club has a Inflatable Rescue Boat sponsored by Waipu ITM. It will be used primarily for IRB racing, to encourage the club's IRB crews to sharpen their rescue skills and compete nationally. It was blessed by Bishop John Paterson in English, Māori and Gaelic as recognition of Waipu Cove's Scottish and Maori history, Nick Brothers from Waipu ITM completed the blessing with the traditional bubbles sprayed on the new boat. The club also received a new All Terrain Vehicle to use for transporting its IRB's to the beach for patrols and responding to incidents along the coast. This was funded by a Surf Life Saving New Zealand central Government grant.

### BOOK FAIR (AND GAMES & JIGSAWS)

Marsden Yacht Club  
One Tree Point Rd  
Saturday 22.1.22

10am - 2pm  
Fundraiser for St John  
Bream Bay Ambulance &  
Ruakaka Dog Rescue



(Vaccine Pass required)



### Safeman SafeFamily Men's Centre.

SafeMan SafeFamily offers a safe place for men to talk privately without judgement and with complete confidentiality.

We are peer led and professionally supported and offer a range of services and support for men and their families.

The services we provide are as follows :

- Advocacy Navigator
- Court support
- FGC Support
- Probation Community Service Provider
- Legal Advice
- Marriage Celebrant
- House and Property Blessings
- One to one counselling
- Drug and Alcohol support
- Anger management group sessions
- Supervisor for court ordered access
- Work brokers / help with employment opportunities.

No appointments are necessary we have an open door policy—if you need help or know someone that does just come on down to :

9 Takutai Place Ruakaka, we are right next door to Jimmys Barber Shop or i can be reached by phone 0211210763 Phil Paikaea .

## WHAT'S ON IN BREAM BAY

- **MARSDEN COVE MARKET.** Next on Sunday 16 January in the marquee at Marsden Cove. 9am - 1pm.
- **NZ BEACH VOLLEYBALL CHAMPIONSHIP TOUR.** At Ruakaka Beach Saturday and Sunday 15 & 16 January. Then from 18 - 22 Ruakaka Beach volleyball tournament. Pg 1 for details.
- **OTP MARKET.** At OTP Primary school Sunday January 23 from 9am - 1pm. Call Sue 021 530 153 to book a stall. Profits donated to Whangārei Hospital children's ward.
- **BOOK FAIR (and games and jigsaws).** Marsden Yacht Club, One Tree Point Rd. Saturday 22 January 10am - 2pm. Fundraiser for St John Bream Bay Ambulance & Ruakaka Dog Rescue. (Vaccine Pass required)
- **ANNUAL ART EXHIBITION AND SALE.** Combined Bream Bay arts ground, 29 and 30 January in the marquee at the Marsden Cove Marina.
- **THE NEXT ROVING RURAL MARKET,** with local growers selling their produce, will be held on Friday 4 February from 3pm to 6pm at Left Fields market garden at 580 Mountfield Rd. in Waipu. Mask wearing is mandatory and you will need to sign in with a QR code or manually. . Bring cash as not all stall holders have eftpos. Christmas hamper raffle tickets on sale
- **WAIPU CAR AND BIKE SHOW** Waipu Caledonian Park - Sunday Feb 6 2022 10 a.m - 2.p.m. Vaccination Passports Required.
- **THE WAIPU SUNDAY MARKET** next on Sunday 13 February, 9am - 1pm in the Coronation Hall.
- **BREAM BAY SPORTS AWARDS** With guest speaker Elisa McCartney. In the Waipu Celtic Barn on Friday 11 March.
- **THE RED DOOR GALLERY.** New work by 60, mostly Northland, artists. Runs until the end of January. Gallery open Friday - Sunday 10am - 4pm. The gallery is in the old Waipū Fire Station on The Braigh.
- **WAIPU MUSEUM** 36, The Centre, Waipu. Open seven days 10am - 4pm . New Tangata Whenua exhibition.
- **THE KAURI MUSEUM,** 5 Church St., Matakoho. School Holiday Special Free admission for under 12s. Open 9am-5pm every day except Christmas Day. [www.kaurimuseum.com](http://www.kaurimuseum.com)



## College prizegiving split into three seperate events



Ryan Andrews was named Dux of Bream Bay College for 2021. He was also awarded the Doctor McMcBirney Trophy which is regarded at the school's highest honour. It recognises commitment, character and application.

Abby Wright was named Proxime Accessit.

The schools head girls for 2022 will be Kora Hita-Duval and Amy Swanson and head boys: Michael Ryland and Max Whitehead.

The 2021 Senior prizegiving was held as three separate events with a limited number of invited guests attending. The year 13 prizegiving was held after school in the whare.

Twenty-two students graduated in year 13 at Bream Bay College in 2021. Below is a list of their names and their diverse destinations for 2022.

**RYAN ANDREWS.** Ryan will be taking a gap year in 2022. Ultimately he hoped so study engineering at Auckland University

**ELYAHNA BACKHOUSE.** Elyahna is heading to the Auckland University of Technology - Communication Design

**JACINTA BROCCAS.** In 2022 Jacinta will begin studying for a Bachelor of Health Science majoring in Midwifery at the Auckland University of Technology

**DEACON CARSON** Deacon has a job in transport warehousing  
**JAMES COOPER** James will take up an apprenticeship as a Marine Facilities Operator

**JORDYN DACKERS.** Jordon will begin studying for a Bachelor of Law along with a Bachelor of Arts degree at Victoria University

**MYA DAVISON.** Mya will train to become a Pharmacy technician at Kensington Pharmacy

**RYAN DREW.** Ryan has a plumbing apprenticeship in Orewa.

**EKSIN FAKAUKA** Eskin is seeking employment until he is able to enlist in the NZ Army.

**TAI-LA HARRISON** Tai is seeking employment.

**TENEILLE HIKI.** Teneille has enrolled in a Yacht Maritime Course at the Manukau Institute of Technology.

**JACKSON HOWIE** Jackson will study for a Bachelor of Nursing at Northtec.

**ANTONIA KRAMER.** Antonia will study for a New Zealand Diploma in Architectural Technology at the Wakato Institute of Technology.

**GEORGIA MOODIE.** Georgia has enrolled at the Auckland University of Technology's Bachelor of Health Science course. She hopes to major in physiotherapy

**KYLE PASCOE.** Kyle will study Quantity Surveying at Northtec.

**RYAN PATERSON.** Ryan will begin study for a degree in applied science at the Auckland University of Technology.

**THOMAS RYAN.** Thomas will study for a Civil Engineering Diploma at Northtec and for a geotechnical engineering degree at Adelaide University.

**R'NIA TALL.** R'Nia will attend the Excel Performing Arts School

**DAVID THOMAS.** David will work in the forestry industry.

**TAYE TOMES.** Taye has a job with Bream Bay Green World Landscaping

**SHAYLA TURNER.** Shayla is looking for a temporary job until she can begin her course of study for a Bachelor of Education in the second semester of 2022.

**ABBY WRIGHT.** Abby will study for a Bachelor of Health Science majoring in physiotherapy at Auckland University.

## BREAM BAY link

Operates every Thursday from 1st August 2019

### MORNING

9.00am	Departs	Kaiwaka Kaiwaka Hall
9.15am	Departs	Mangawhai Village Village Shops Bus Stop (by restrooms)
9.20am	Departs	Mangawhai Heads I-Site
9.35am	Departs	Lings Beach Corner of Wairahi and Cove Roads
9.40am	Departs	Waipu Cove Beach Car park
9.50am	Departs	Waipu Monument Bus stop
10.10am	Departs	Ruakākā Peter Snell Road (opposite Takutai Place)
10.50am	Arrives	Whangārei Rose Street Bus Terminus

\*For travel within Whangārei see CityLink Whangārei timetable  
[www.citylinkwhangarei.co.nz](http://www.citylinkwhangarei.co.nz)  
or get your timetable from the Rose Street office.

### AFTERNOON

3.00pm	Departs	Whangārei Rose Street Bus Terminus
3.40pm	Departs	Ruakākā Peter Snell Road (opposite Takutai Place)
4.00pm	Departs	Waipu Monument Bus stop
4.10pm	Departs	Waipu Cove Beach Car park
4.15pm	Departs	Lings Beach Corner of Wairahi and Cove Roads
4.30pm	Departs	Mangawhai Heads I-Site
4.35pm	Departs	Mangawhai Village Village Shops Bus Stop (by restrooms)
4.50pm	Arrives	Kaiwaka Kaiwaka Hall



OPERATED BY  
**LEABOURN**  
Ph: 0800 994 404  
E: office@leabourn.co.nz

FARES	One Way	Return
Kaiwaka	\$7.00	\$10.00
Mangawhai	\$7.00	\$10.00
Mangawhai Heads	\$7.00	\$10.00
Lings Beach	\$7.00	\$10.00
Waipu Cove	\$6.00	\$8.00
Waipu	\$6.00	\$8.00
Ruakākā	\$5.00	\$7.00

### ROUTE DESCRIPTION

Kaiwaka/Mangawhai Road, Molesworth Road, Mangawhai Heads Road, Cove Road, The Centre Waipu, Nova Scotia Drive, SH1, Marsden Point Road, Peter Snell Road, Marsden Point Road, SH15A, SH1, Otaka Road, Maunu Road, Walton Street, Rose Street Bus Terminal.

If you would like to be picked up elsewhere along the route, please phone Leabourn's to arrange this on the Wednesday before you want to travel.

CONTRACTED TO:  
**Northland REGIONAL COUNCIL**

For service updates visit:  
[www.buslink.co.nz](http://www.buslink.co.nz)  
Feedback to buslink@nrc.govt.nz

## astech electrical NORTHLAND



Electrical Contracting & Repairs  
Electrical Inspector, Caravan EWO, Coolrooms, Air con., Heat pumps

P: 09 432 7968

M: 0274 780014

E: ashtond@astech.biz



**THE MAINTENANCE**

[www.themaintenance.co.nz](http://www.themaintenance.co.nz)

- ❖ Chemical and non-chemical house washing
- ❖ Window and house cleaning
- ❖ Painting and staining – exterior house, decking and fences
- ❖ Water blasting - decks, driveways and courtyards
- ❖ Clean guttering and downpipes
- ❖ Pest control and spider spraying
- ❖ Tree trimming with extension saw

Phone now for a **FREE QUOTE**

REVITALISE ❖ PRESERVE ❖ PROLONG ❖ MAINTAIN

**TONY 021 196 2949 OR MELISA 021 075 6770**

# TRADES & SERVICE DIRECTORY

Ph 09 432 0209

## This Space

### Now available

\$38.50 gst inclusive

or for regular customers  
(six or more insertions)

\$34.65 gst inclusive



**BRADLEY EARTHWORKS**

• POND CLEANING • DRIVEWAYS • RACEWAYS  
• LAND CLEARING • TREE REMOVAL • ROADING AND MORE!

CALL ME TODAY FOR ALL YOUR EARTH & TREE WORKS  
PHONE ROY 027 374 5090 WAIPU



**O'MALLEY CONTRACTING LTD | CONCRETE SPECIALISTS**

- FOUNDATIONS
- HOUSE SLABS | STAIRS
- RETAINING WALLS
- DRIVEWAYS | CARPARKS
- EXPOSED AGGREGATE
- COLOURED CONCRETE
- COMMERCIAL | RESIDENTIAL
- LICENCED BUILDING PRACTITIONER

Free No Obligation Quote

FAMILY OWNED & OPERATED

021 2200 198 | O'MALLEYCONTRACTING.COM



**Ashleigh Louise**  
Coastal and Lifestyle Sales  
Bream Bay

027 733 5703  
a.louise@barfoot.co.nz

**BARFOOT THOMPSON**

### Grant McLean Stock Agent for Bream Bay

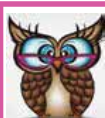
Ph 021 7758 48  
Email: skincarla@xtra.co.nz

All aspects of stock sales including:  
• dairy beef • bobby calves • store cattle • live export heifers  
• sheep • pigs • supplying stock for slaughter

Also caters for small block holders.

**Carrfields**

Livestock



### The Office Chick

Phone/Text: 027 235 3479  
Email: admin@theofficechick.net  
www.theofficechick.net

Virtual assistant for all your administration,  
accounts and secretarial needs.

Mobile service - your office or ours.

Pick up and delivery service available.  
theofficechick

Ph: 09 432 0123

**BREAM BAY GLASS**

FOR ALL YOUR GLASS NEEDS



Mob: 0274954548

**ABSOLUTE CONCRETE**

www.absoluteconcrete.co.nz

CULVERT PIPES  
Spun and reinforced  
Crane truck delivery  
Drainage Merchant - Hardware Store  
Email: sales@absoluteconcrete.co.nz  
Phone (09) 431 2211  
KAIWAKA

**Bream Bay Concrete Ltd.**



Free Quotes • Reliable Service • Quality workmanship

- Concrete pads
- Shed floors
- Pathways
- Home floors
- Driveways
- Concrete cutting
- Excavation works
- Retaining walls
- Paving fences
- Profiles for homes & sheds
- Subfloors & boxing

Mark Royals Ph: 432 0107 Mob: 0274 433 130

**TC & ENGINEERING**  
Metalwork Specialists

Stainless and Aluminium Welding and Bespoke Fabrication

Gates and outdoor furniture. Marine repairs and fabrication.  
Onsite welding for farm repairs and modifications.  
www.tcengineering.nz 021 145 7075 or 021 203 0309

**Ruakaka Motors**

Mechanical and Auto Electrical  
Repairs and Servicing

Monday - Friday 7.30am - 5pm  
Open Saturday morning 8am - 1pm.

Tyres and Batteries  
Warrant of Fitness testing  
Phone 432 7233

**BLIND PRO**

Blinds • Awnings • Shutters

Indoor blinds and outdoor screens

Call us today for a free, no obligation  
consultation and quote

ph 09 423 9661  
website www.blindpro.co.nz  
email info@blindpro.co.nz



**FAST WINDSCREEN REPLACEMENTS  
& CHIP REPAIRS**

- Mobile service or come to our workshop
- Ultra competitive pricing • Insurance claims welcome.
- Windscreen replacement in under an hour.

Phone Conrad on 022 036 2916  
2/17 Gumdigger place.



**WE BUILD, HIRE, ALLOY MOBILES, TEMPORARY  
FENCING, & SHRINKWRAP**

Ph: 09 432 7643 • 0274 726 772  
macsway@xtra.co.nz Kapa Road, Ruakaka

**BREAM BAY ELECTRICAL**

BREMBAYELECTRICAL@GMAIL.COM

MASTER ELECTRICIANS

0800 BBE 555  
027 35 33 555

**Tractor Mulching**

100hp tractor with high bodied yffails,  
mulcher, park finishing mowers, slashing  
Gorse & blackberry spraying



Also mechanical tractor  
repairs

Phone Bain McGregor  
0274 979 013  
or 09 432 0527

**PARADISE QUARRY**

**PARADISE QUARRY STONEMASONS**

Specialists in stunning stone for landscape  
Suppliers & installers of northland's own schist for all your  
stonemasonry & landscaping Requirements

(09) 432 2722 or GEOFF (021) 972 139  
www.paradisequarry.com

**McQUINN PUMPS**

How's Business?  
... It's Pumping!

24/7 SALES, SERVICE & INSTALLATION | PUMPS & WATER TREATMENT  
PHONE SUPPORT AVAILABLE

0800 627 846  
PHONE FREE

NOW AT 72 KIOREROA ROAD  
—ALONG FROM RD1 & ITM

**Deadline for next issue - Wednesday 19 January**



# TRADES & SERVICE DIRECTORY Ph 09 432 0209



## DRAINAGE:

\* Septic Systems \* Water Tanks \* Truck & Digger Hire \*  
\* Subdivisions \* Domestic \* Commercial \*  
Certifying Drainlayers

Licensed Contractor for  
Waste & Drainage Work



## EARTHWORKS:

\* Subdivisions \*  
\* Farm Work: Effluent Pond Design & Build, Dams, Races \*  
\* House Sites \* Driveway Prep \* Lawns \* Roading \*

P. 09 432-7877 M. 027-432-7877  
E. karl@hansende.co.nz



## Ash Worthy Small Block Mulching

**NO JOB TOO SMALL!**  
027 313 4429



## Brian the Painter

Decorator, Restorer, Handyman  
Property Maintenance

No job too small,  
No travelling time charges  
Free advice

Phone 0274 882371 Or 09 431 4882  
Email: hollis@hotmail.co.nz



## STORAGE BREAMBAY

76 Waiwarawara Drive, Ruakaka

storagebreambay@gmail.com  
**021 432 701**  
(09) 432 77 32

www.storagebreambay.co.nz

## LOW COST DRIVEWAYS & SURFACING NEEDS

Concrete or asphalt beyond your budget ...

We have the next best solution for a  
fraction of the price.

Call for a quote, you'll be pleased you did!

Paradise Quarry Contractors

Geoff (021) 972 139 or (09) 432 2722

For contractors who 'think' ...

## Long Run Roofing & Cladding

Re-roofing & Spouting  
Edge Protection

**Terry Mounsey**  
021 562 269  
wetaroofing@xtra.co.nz

**RELIABLE & PROFESSIONAL SERVICE**

## MPP MARS DEN

Panelbeating and Spraypainting  
Caravan and Motorhome Repairs  
Tyres New and Secondhand  
Punctures

470 Marsden Point Rd, Ruakaka  
Call 09 4330313 24 Hrs or Bert 021 983 724

## M.V.B. Electrical Ltd.

Working in Bream Bay since 1977

Repairs • Installations • Advice

**Mike van Blommestein**

Phone: 09 432 1015 • Mobile: 0274 783 749  
Email: mikevanb@xtra.co.nz

## NORTHLAND CLEANING SOLUTIONS

We have the solution for your needs

- Commercial/Domestic Cleaning
- Builders/Construction cleaning
- Carpet/Upholstery Cleaning
- Carpet Repairs/Laying
- Flood Restoration
- Property Maintenance Solutions & More.

**Rochelle & Jason Brownlie**  
Mbl: 021 155 0319 Email: rochelle@ncsl.nz  
Website www.northlandcleaningsolutions.nz

## GRAEME BINT FENCING

GOOD RATES, NO JOB TOO SMALL

09 432-1599 or  
027-292-2833

grbint@xtra.co.nz

## MANGAWHAI SMALL ENGINES

Grasshopper, Husqvarna and Honda dealer

194 Molesworth Drive, Mangawhai  
Ph: 09 431 5270 or Mb: 021 655 481  
Email: msengines@xtra.co.nz

## BLINDS & SHUTTERS WHANGAREI

Locally Owned and Operated

### Rollers, Venetians, Verticals & Shutters

Ask about our DISCOUNT for houselots  
Free in-home measure & quote  
Free Installation

**Phone Gail 0211 95 35 35**

www.blindsandshutters.co.nz

## BREAM BAY ACCOMMODATION RUAKAKA

STUDIO - HOLIDAY HOMES - B&B

BOOK ONLINE OR PHONE

Ph: 09 432 7025 Mob: 021 2722 739  
website for online bookings: www.breambayaccommodation.com

## LAWSON CARTAGE

FOR ALL YOUR EARTHWORKS & CARTAGE NEEDS

Suppliers of: topsoil, compost, woodchip, bark, sand, pebble, rocks and firewood.

**Ph/Fax 09 432 8418 or 021 768 940**

458 Marsden Point Rd. PO Box 142, Ruakaka 0151  
email: lawsoncartage@xtra.co.nz

## Susan, the Painter

Phone for a free quote

**Ph. 027 370 5339**

## asbestos removal

Textured Ceilings  
Asbestos Fibrolite  
Asbestos Lagging

Garry Smith  
Mob 027 738 7888

Ph 09 432 7305  
Fax 09 432 7304  
email: gnsasbestos@xtra.co.nz  
14 Bream Bay Drive, Ruakaka, 0116

**BREAM BAY NEWS PHONE 09 432 0209**

Email: breambaynews@xtra.co.nz

Post copy to : Bream Bay News, RD 2, Waipu

Email: breambaynews@xtra.co.nz

or leave it at the Waipu or Ruakaka Post and Lotto Shops

**SERVICE OFFERED**

**ART HANDLER.** Professional. 5 years experience at the NGV in Melbourne moving and installing all types of art from paintings to sculptures, any size, any weight, any age. Rory 021 139 2553.  
eightythreephoto@me.com

## NORTHLAND HEADSTONES

Located in One Tree Point  
Your Local Headstone Showroom  
Call 0800 707 800  
www.northlandheadstones.co.nz

### PHOTOGRAPHER AVAILABLE

Waipū  
COMMERCIAL - REAL ESTATE  
WEDDINGS - DOCUMENTARY  
AERIAL - DRONES - EVENTS  
Ph 021 139 2553  
EIGHTYTHREEPHOTO.COM

**LINKING HANDS**  
Health Shuttle  
Phone  
(09) 431 8969



**Cut it! Chip it! Grind it!**

**Tree Removal**

- ✓ Pruning
- ✓ Chipping
- ✓ Stump grinding

Qualified & Insured  
Ph Scott (0800) 468-9663  
Arborcare  
Tree Maintenance

**GLENMOHR**  
water care

**WATER TANK CLEANING**

No need to empty your tank

- Vacuum or full scrub

Phone Mark Draper  
0274 707 607

**WANTED****VEHICLES WANTED**

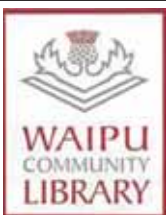
Top cash paid For any VANS, UTES, TRUCKS, 4X4, Dead or Alive, damaged, de-registered Mechanical problem, no WOF we buy it. Call 0800 333 398

**WANTED OLD SCAFFOLDING** H frame x 6 email me vxvxxv96@gmail.com

### Waipū Boarding Cattery

Excellent care and accommodation  
Ph Sue 432 0394

**LOCAL PEOPLE  
READ THE  
BREAM  
BAY NEWS  
IT IS AN  
EFFECTIVE  
PLACE TO  
ADVERTISE**

**LIBRARY HOURS**

Monday, Wednesday,  
Thursday, Friday &  
Saturday 10am - 1pm.  
Tuesday 10am - 4pm.



**RUAKAKA COMMUNITY LIBRARY**  
Takutai Place, Ruakaka  
432 8406  
Mon - Fri 9:30am-3:30pm  
Sat 9am-1pm

JP Service available  
Saturdays 10am - 11am.

**FOR SALE**

## WATER TANKS

09 431 2211

sales@absolute  
concrete.co.nz

**FIREWOOD  
QUALITY, DRY, SPLIT  
OLD MAN PINE/  
GUM/JAP CEDAR**

or a mix of your choice  
Pick up or deliver  
\$100 m3  
Call me anytime  
0275588151

**WORMS  
FOR SALE**  
For worm farms  
Phone 432 0209  
or text 027 432 0070

**Scoters Ply  
Wall Lining  
9mm MDF Grooved  
Deliveries  
438 6565**

**RAWLEIGH'S PROD-  
UCTS** Independent dealer. Phone Susan McRae  
027 227 2291.

**WORK WANTED**

**ACTIVE PENSIONER** 66 seeks light part time driving job to supplement pension, clean licence  
Ph 2040501313

**BUSINESS FOR SALE**

## THE BREAM BAY NEWS IS FOR SALE.

Is there anybody out there interested in taking over the running of this great little community newspaper.

I have owned and run this business for the past seventeen years and am looking for someone who will run the paper with a genuine desire to provide good useful information to the Bream Bay Community as I have tried to do.

There are excellent growth opportunities for The Bream Bay News as the area is growing rapidly

Running the Bream Bay News is hard work but very rewarding.

Price on application.

Phone or text Marilyn - 027432 0070  
Or email: breambaynews@xtra.co.nz

**CLASSIFIED ADVERTISING**

Costs \$5 for up to 20 words and  
20c for each additional word.

Boxed, classified adverts cost \$15 plus gst

Phone your advert through to 432 -0209

email it to breambaynews@xtra.co.nz

Post to: Bream Bay News, RD 2 Waipū 0582  
or leave it with payment at The Waipū Post Shop  
or the Ruakaka Gift and Lotto Shop

**SUPPORT SERVICES**

Bream Bay  
Community  
Support Trust

Takutai Place, Ruakaka Phone 09 432 7197

**SERVICES WE PROVIDE:**

- Social workers
- Family violence support workers
- Youth services - youth workers
- Youth hang out space
- Schooling - family liaison
- Community Connector
- Driver mentor programme
- Free Kia Ora Ngatiwai medical clinic each Wednesday 9am - 12noon by appointment
- Free budgeting service by appointment - 432 7197
- Narcotics Anon Wednesdays 6.30-730pm

Workbridge, which helps people realise their potential and find employment will be at the Bream Bay Community Trust every Tuesday.  
Phone 432 7197 to book an appointment.

**Justices of the Peace****Ruakaka**

Ms AP Paki	09 432 8262/021 149 1625
Darrell Trigg	09 432 7256/021 332 901
Ken Orr	09 432 8215
JM Archibald	021 227 4355
Wayne Buckland	09 432 8226 Ext 703
PH Goonan	021 824 825

**One Tree Point**

Jules Flight	09 432 8336/0274 777 210
Sir John Goulter	021 612 442
MM Jolley	027 415 9486
Ian Bogue	0274 300418

**Waipū**

Trevor Vaile	09 432 0400
Mr. L.M. Hitchens	022 656 4055
Mr. D.A. Scott	09 929 9729/027229 9752
Ken Couper	027 292 0524

Make contact with a Justice of the Peace (on any day) and make an appointment to have your documents completed.  
Only current Association members are listed.

## BREAM BAY ANGLICAN FOODBANK

If you would like assistance  
or know someone that does,  
perhaps we can help  
Please phone Janet 433 0045  
Or Anoek 021 141 3409

**THE NEXT PUBLICATION DATE**

of the Bream Bay News will be Thursday 27 January  
The deadline for all copy is 4pm on  
Wednesday 19 January



## SITUATIONS VACANT

**WAIPU PRIMARY SCHOOL**

Office Administrator / Principal's Assistant  
Part-time position available (three days -13.5 hours)  
School experience preferred but not essential.  
Please send CV and covering letter to:  
principal@wps.school.nz  
Closing date for applications: 5.00 p.m. 21 January.

**OSCAR Programme Manager – Waipu**

We are seeking a fun and enthusiastic person to run our OSCAR afterschool programme. The position is for 17.5 hours per week school term time only (2.00pm to 5.30pm Monday to Friday) reporting directly to the Principal and School Board.

For this position you will need a first aid certificate, police vet, which can be completed through the school. As per the Vaccination mandate it is also mandatory for anyone working onsite at a school to be vaccinated against COVID-19.

Please email a cover letter and CV to principal@wps.school.nz.  
Applications close at 12 noon on Friday 21st January 2022.  
Job would commence 8th February 2022.

## PUBLIC NOTICES

**Bream Bay Medical Centre Ltd.****Ruakāka Town Centre, Ruakāka**

**Monday - Friday: 8.30am - 5pm**  
**Saturdays: 9am - 12pm**


**Marsden Cove Medical Centre**  
**1A Ngawaka Lane, One Tree Point**

**Monday - Friday: 8.30am - 5pm**

Please advise at time of booking  
if you require an extended consultation

**Ph: 432 8060 · Fax: 432 8230**

**Covid 19 Vaccination available at the**  
**Bream Bay Medical Centre**  
**in the Ruakāka Towncentre.**

## PUBLIC NOTICES

**BREAM BAY NEWS DELIVERY PERSON**

For the Marsden Cove area. Twice monthly delivery

**Earn money while you exercise.**

Phone or text Marilyn 027432 0070.  
or email: breambaynews@xtra.co.nz

**DELIVERERS REQUIRED**

Are you a reliable and responsible person who would like to earn? I am looking for people to deliver newspapers and circulars in the Mangawhai and Mangawhai Heads areas. You must be at least 11 years old.  
Please phone or text: Barry 021 143 9599  
Or email: 2bnice.paradise@gmail.com

**BREAM BAY WORK**

\*great job while others sleep  
\*suits people who like to work alone  
\*various days & relieving - newspaper delivery to shops & letter boxes (not kids on bikes or brochures)  
\*work for us to gain a reference for future employment or as a retirement job  
\*Very early starts and finishes leaving you free to study or do a SECOND JOB  
This is regular part time work.  
Up to 4 hours shifts  
Applicants must have strong English communication skills & knowing the area would be an advantage  
OWN vehicle, (no bigger than 2 Ltrs  
- fuel is reimbursed - tax free  
FULL DRIVERS LICENCE & cell phone essential.  
Please phone/text 027 860 9520 (between mid day & 8pm)  
Applicants for this position should have NZ residency or a valid NZ work visa.

**DR HERBERT MORRISON WISHES TO ANNOUNCE HIS RETIREMENT**

after 30 years of active service,  
23 of those in Waipu.

Waipu Medical Centre has been sold to Coast to Coast Healthcare who will take over operations at the end of January 2021 and will continue to operate with all current staff.

Dr Morrison would like to thank the community, all patients past and present for their wonderful patronage, understanding and patience throughout all the difficult times.

Wishing everyone a Happy New Year.

**Struggling With Technology!!**

We offer training designed for those over 50!

**Come to our Open Day**

Discuss your needs with our tutors so you can keep up with technology  
When: Tuesday 25th January 2022

10am – 12noon

Where: 7 Kapa Road, Ruakaka

**SENIORNET BREAM BAY**

Vaccine pass required  
Phone enquires: - 4327 692  
(Please leave a message)

**NORTHPINE COMMUNITY LIAISON COMMITTEE**

This committee meets periodically to review the environmental performance of the Northpine timber manufacturing plant in Waipu, in consultation with representatives of the local councils. Any Waipu resident with concerns about the environmental effects of the Northpine plant should notify the Northpine office (432 1155). Concerns will be recorded, considered and subsequently reviewed by the liaison committee. The Independent chairperson of the liaison committee is Steve Goldthorpe 0274 849 764.

**BREAM BAY SUNDAY CHURCH SERVICES**

**Presbyterian** Camellia Ave, Ruakaka:  
8.45am. The Centre, Waipu: 10.15am.  
Prayer Service: 7pm

**Encounter** 223 Marsden Pt. Rd,  
Ruakaka, 10am.

**Anglican** 1st and 3rd Sundays - St Paul's  
Ruakaka 2nd and 4th Sundays -  
St Peter's Waipu. All services start at  
9.30am.

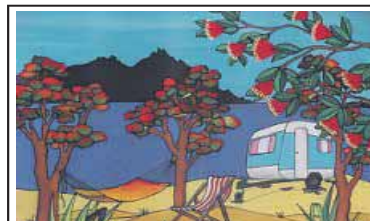
**Catholic** Holy Family Church,  
Ruakaka, 10.30am. Mass or Liturgy of  
the Word

**Lifepoint.** 300 OTP Rd, 10.30am.

## MARKETS

**OTP Artisan Market**

One Tree Point School field  
Fundraiser for Whangarei Hospital Children's Ward  
Sunday 23 January 9am to 1pm.  
Spaces available. Ph. Sue 021 530 153 or 09 432 8112  
Come and Support Local.

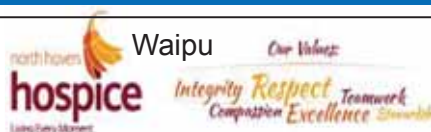

**Marsden Cove**  
**MARKET**

**Sunday 16 January**  
**9am - 1pm**


**in the marquee at the**  
**Marsden Cove Marina**

**ART + CRAFT + ARTISIAN + PRODUCE**

## VOLUNTEERS NEEDED



Volunteers needed  
Saturday and Sunday 9am - 1pm  
And for occasional weekdays  
Donated goods welcome  
Phone 432 1342 for pickups.

**YOUR TRUST OUR PEOPLE** 

**Spectacular at Waipu Cove**  
**AUCTION (Unless Sold Prior) Sun 30 Jan from 11am**

- Two level, 203m2 architecturally designed cedar weatherboard home
- Stunning panoramic views of the beach, ocean and islands
- Set on 1257m2, with beautiful landscaped tropical gardens
- 2 minute walk to Waipu Cove beach for safe swimming and surfing
- Upstairs - 2 bedrooms, 2 Italian bathrooms and with open plan lounge and Italian kitchen which opens to huge deck showcasing coastal vista
- Lower level comprises sleeping accommodation for 5, 1 bed/ 2 bath fully self-contained open plan living
- Warm timber flooring, 4 velux open roof vents, high raked ceilings, built in stereo, arlo security system
- Lovely wood fire, double glazing, 2 heat pumps
- High calibre property, highly sought after

**OPEN HOME: 49 St Anne Road, Waipu Cove**  
**Sat/Sun 15th/16th January 1-1.45pm**  
 Roger King 027 7555 001 **WPU11362**

**Coastal Lifestyle Beckons**  
**AUCTION (Unless Sold Prior)**

- Set on 2178m2, the views are phenomenal
- A beautiful coastal vista which includes the Waipu river mouth, islands and ocean
- The lovely sea view can never be built out
- Private and sheltered amongst quality homes
- A short stroll to the water where you can swim, fish and kayak
- A blank canvas ready for your creativity

**AUCTION Wed 16 Feb from 12.30pm**  
**Harcourts Waipu, 7 The Centre, Waipu**  
 Judy Guy 027 221 5623 **WPU11367**

Harcourts Waipu | 7 The Centre, Waipu | 09 438 1000  
 Waikato Branch: 021 634 9898

**Harcourts Waipu**

**PREMIUM.CO.NZ | FINE PROPERTIES** **PREMIUM<sup>®</sup>**

**TEAM MCKENZIE**  
 SANDY 021 431 541  
 YANA 021 080 79342  
LICENSED AGENT & SALESPERSON REA 2008

**Happy New Year**

**PREMIUM PARTNERSHIPS | PROVEN RESULTS**

**7 Seacrest Blvd, Lang Cove**

- 637m<sup>2</sup> site with a 325m<sup>2</sup>, two storey home
- Gorgeous ocean / sand views, easy walk to the beach
- 3 dble bedrooms, + office, media room, 2.5 bathrooms, open plan living, triple garage
- Energy efficient, 24 solar panels, Tesla battery, EV charging port
- Some features incl under-floor heating in bathrooms, American oak flooring, decking is mahogany
- Your summer awaits here - Call today to view!

**2 Blue Moon Rise, Langs Beach**

- 516m<sup>2</sup> site with a 231m<sup>2</sup>, two storey brand new home
- Double garage and laundry are located downstairs
- The upstairs is 4 bedrooms, 2.5 bathrooms, an open plan kitchen, living and dining which all opens up on to the large wrap around deck, with great sea views
- Negative detail ply ceilings and feature walls and oak floors give this home a warm feeling
- Brand new - never been lived in
- Ready to view now?

**Hilltop Release - On Sale Now!**

- 13 new sections on sale now in Lang's Beach
- Ranging from 486m<sup>2</sup> to 735m<sup>2</sup>
- Fully reticulated sections with magnificent ocean and island views over Bream Bay
- Short walk to Langs Beach and Waipu Cove
- Flexible covenants to protect your investment
- Deadline sale closes 28th January 2022 at 3pm
- Subject to tiles being issued
- Don't miss out - call to view now!

COAST & COUNTRY SALES LTD MREINZ LICENSED REA 2008

**BBR BREAM BAY REALTY**

**BREAM BAY REALTY LIMITED (LICENSED: REAA 2008)**

Shop 11 | Town Centre | Ruakaka 0116 | NZ  
 PH: 09 433-0300 | [bbrealty.co.nz](http://bbrealty.co.nz)  
[info@bbrealty.co.nz](mailto:info@bbrealty.co.nz)

Proud sponsors SPCA WHANGAREI

**HAPPY NEW YEAR to all our past and present customers.**

**Wishing you all a Safe and Prosperous 2022.**

**Come and see one of our very experienced team members if you are thinking about buying or selling.**

**ALAN SHEDDAN** 021 810 319 **JANINE GOLDSMITH** 021 432 793 **JOANNE DEWSON** 021 780 622 **FIONA SOUTHRN** 021 317 775 **FRANCIE STOKES** 022 656 0165 **LYNN PARKER** 021 795 546

**IT'S ALL ABOUT FAMILY**  
**One Tree Point**

- Blank canvas 1154m<sup>2</sup> Section
- 4 Bedroom, 2 Bathrooms
- 2 Lounges
- Separate double garage
- Sunset surprise by the harbour
- Walk to the water

**\$895,000 | [#4081](http://bbrealty.co.nz)**  
**FIONA SOUTHRN MNZM**  
**Mob: 021 317 775**

**"AN EXTRA SPECIAL PARCEL"**  
**Ruakaka**

- 878m<sup>2</sup> Section
- NO Build Covenants
- Walk to River & Estuary
- Surf beach & shops closeby
- Set back from road by limited access road

**\$495,000 | [#4083](http://bbrealty.co.nz)**  
**JANINE GOLDSMITH AREINZ**  
**Mob: 021 432 793**