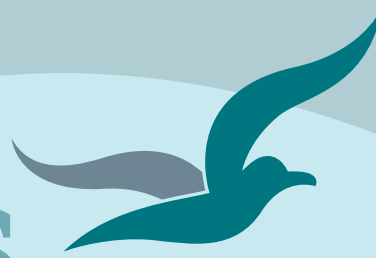


Bream Bay News



Est.1967 | Locally owned and operated | Delivered FREE twice a month 17 November 2022

Affordable Quality

- * SECURITY DOORS
- * INSECT SCREENS
- * SHOWER DOORS
- * BLINDS
- * AWNINGS
- * WARDROBE SYSTEMS

www.homeplus.co.nz



34 Albert St
Whangārei

Est 1977

PH: 438 9452

whangarei@homeplus.co.nz

Kāinga Ora at the Ruakākā Residents and Ratepayers meeting

“It makes sense to build new homes on land we already own “

If the redevelopment of a cluster of 22 Kainga Ora homes in the Ruakākā Village goes ahead, the residents of those homes will have the option of moving into the new builds.

Jo Haunui, Regional Manager for client services with Northland Kainga Ora gave this assurance at the Ruakākā Residents and Ratepayers November meeting last week.

She said the homes would not be the same as the houses that are there at present. They could be up to three stories high and some would be terraced housing, so they might not suit everyone. Also some of the residents might prefer to remain in the homes they move into while the build is underway.

Mrs Haunui said she had meet with the affected residents and understood that the primary question people were asking is “Where will I live?”

She said it would be a difficult task but if people needed to stay in the Ruakākā area because of

Continued on page 4.

The Villy Day Out Hard work but well worth the effort



Bobby Joe Paikea celebrating the success of the Villy Day Out 2022. Bobby Joe, who organised the event said it was hard work but she wouldn't have missed any of it and even when the weather looked doubtful she hoped and prayed and was confident it would all turn out well.

The Villy Day Out billed as a family fun day with “heaps of free fun for kids” . There were top town games, free rides on motobikes and a toy ambulance, face painting, boundy castles, kapahaka performances, the Mahi Pai dancing taniwha and lots more.

More pictures on page 8



Waipu 17 Nova Scotia Drive

1.6299_{ha}

Price by Negotiation

Phone for viewing times

Blair Chandler 027 788 9933 blair.chandler@bayleys.co.nz

MACKYS REAL ESTATE LTD, BAYLEYS, LICENSED UNDER THE REA ACT 2008

Rare development land in Waipu town

- 1.62ha (more or less) freehold land located in the heart of Waipu.
- Consented for a 5,105sqm retail shopping centre across six buildings including a supermarket, hardware store, and office.
- Substantial infrastructure works carried out by the vendor include the construction of a new high capacity storm water connection, geotech survey completed and all but finished the civil works design.

bayleys.co.nz/1052937

BAYLEYS

MARSDEN PRINT

QUALITY COMMERCIAL PRINTERS

PROUDLY LOCALLY OWNED & OPERATED
SINCE 2004

BUSINESS STATIONERY
PROMOTIONAL PRODUCTS
CARBONLESS BOOKS
LABELS, FLYERS, BROCHURES
SIGNAGE
FULL COPY & BINDING SERVICES



1/16 Marsden Bay Drive, Ruakaka

0800 432 898 | 09 432 8998

marsdenprint@xtra.co.nz

www.marsdenprint.co.nz



THE BREAM BAY NEWS is published by Bream Bay News Ltd.

Address : RD 2, Waipu Phone : (09) 432 0209

Mobile : 027 432 0070

Email : breambaynews@xtra.co.nz

Website: www.breambaynews.co.nz

Editor : Marilyn Cox . Accounts : Susan McRae.

Technical assistance Geoff Spencer

Advertising design :and website maintenance Megan Lea.

Printed by Horton Media

We distribute 6,000 copies twice a month throughout Bream Bay, Maungaturoto and Mangawhai.

EDITORIAL

Where were all those road cones when we needed them?

What a wonderful event last Saturday's Villy Day Out was!

There was so much going on. The Mahi Pai taniwha were up on a truck deck stage with the troupe's creative director and one time Villy girl Lisa Minhinnick (ne Simperingham) dressed as her character Whaea Lulu Bell blowing bubbles over the crowd and exhorting local children to rise up as high as they can go just like those bubbles.

I believe local school kapahaka groups also had a turn on the stage although I arrived at around 11am and was a bit late for that.

A series of games such as *Dunk the Duck* and *Bean Bag Bucket* were set up in one section of the field. I am a big fan of these simple, low cost activities for children but I have to admit they could not match the popularity of a chance to ride a big, noisy, motorbike seated behind one of the tough men of the *Hard'n Fast Motor Cycle Club*.

For the adults Bream Bay St John had free blood sugar and blood pressure tests and for the kids, rides in a toy ambulance.

Encounter Church gave away ten shiny new bicycles all donated by K Mart. There were free haircuts, a long queue for ice cream, people handing out bottles of chilled water and hangi for everyone. I am full of awe for the event's chief organizer Bobby-Joe Paikea.

"Yes it was hard work" she told me "but I loved every minute of it."

It must have been a bit nerve wracking after putting in all that effort to see the weather forecast predicting rain but Bobby - Joe had hope and faith and the sun came through.

Back where I live in lifestyle block land we were coping with the after effects of Friday morning's massive flood. The reason I missed the kapahaka was I spent the morning clearing all the debris away from my little trees along the riverbank. Such a raging torrent came through that many were washed away. Where I found marker stakes still in place I cleared away the leaves, and sticks to find little miracle trees still there with green branches and their roots in the ground. They have an extra layer of silt around them now - free fertilizer.

But what a flood! I tried to drive in along Shoemaker Road to the Armistice Day ceremony in Waipu on Friday morning but found a fast flowing muddy river pouring over the bridge.

An alternate route along Applecross Rd was also impassable. Later I went into Ruakaka for some shopping and had a look at the floodwater over McCathie Rd.

I watched a ute drive through. The water got up to the top of its wheels and I wasn't sure it was going to make it. A friend described how he had tried to return to his home in Ruakaka along that road but had to turn back. After a long stop - start trip into Whangarei and back to pick up his granddaughter he could have done with some signs warning him the road was closed. Come to think of it there were no markers on Applecross or Shoemaker Roads either. Where are all those road cones when we actually need them?

Marilyn

Phone the BREAM BAY NEWS 09 432 0209

or email:breambaynews@xtra.co.nz

if you know of something interesting going on in Bream Bay.

Building in Whangarei, Kaipara, Far North



The Gere 230sqm

\$537,080 incl gst

Includes: plans, consent, kitchen, appliances, tinted double glazed windows, tiles, carpet, blinds, heatpump.



Wayne Pickerill
Managing Director

"Hi, I'm Wayne Pickerill, Managing Director and Project Manager for your new Fowler Home. Enjoy quality and all the benefits of dealing with an efficient, low overhead, nationwide company, where I will take a personal interest and be involved through to completion."



**FOWLER
HOMES™**

More designs at www.fowlerhomes.co.nz or visit our office at 63 Walton St, Whangarei. Phone Wayne Pickerill 438 4840

Just four weeks to make submissions on resource consent application for Northport expansion

Northport's long awaited resource consent application for the port's expansion has been lodged with the Whangarei District and Northland Regional Councils and is open for public submissions until Thursday 15 December.

The Ruakaka Residents and Ratepayers Association discussed the application at its meeting on Tuesday 8 October and decided that while the association supported the application to expand and develop the port's capacity as a container port, there might be aspects of the application it would like to comment on.

A sub-committee was set up to work on the associations submission. Northport is seeking to extend its wharf by 250 metres and increase its wharfside storage capacity. This would involve 11.7 hectares of reclamation and 1.72 million cubic metres of capital dredging, disposal of the dredged material and ongoing maintenance dredging. In its *Vision for Growth*, Northport also put forward plans to develop a shipyard and floating dry dock facility. The resource consent applications that will be necessary to build this facility have been separated out from the container port development.

Lots of Te Araroa walkers

There are lots of Te Araroa walkers passing through Bream Bay at the moment. You can see them with their poles and backpacks trekking along Marsden Point Rd., along the beach of down Cove Rd., on the Waipu Cove Road cycle and walkway, restocking their supplies at the supermarkets or calling into our local cafes.

Matt Claridge, CEO of Te Araroa, The Long Walkway said 1300 people have registered to walk the trail this year but as registration is not compulsory he thinks the real number of trail walkers is likely to be around 3,000.

Around two thirds of TA walkers start up at Cape Reinga. It generally takes two to three weeks to reach Bream Bay. To time arrival in the South Island after snow has melted in the mountains, most southbound walkers set off in October, which is why we are seeing so many passing through Bream Bay at present.

The majority of northbound walkers will set off from The Bluff in December or January to arrive in Bream Bay around April.

This year with New Zealand's international borders open many of the Te Araroa walkers are once more young visitors from over seas.

It takes around five months to walk the entire 3,000km trail.

Top student at Bream Bay College



Mirabella Uphof pictured here with her parents Anthony and Lisa Uphof was named Dux of Bream Bay College at its Year 13 prize giving ceremony held in the school's whare on Wednesday 2 November. Mirabella also won a raft of other cups and scholarships including the Dr. McBirney Cup awarded to the school's best all round student in Year 13 and a University of Auckland Top Achiever Scholarship valued at \$22,000. Her destination for 2023 is the University of Auckland where she will study for a Bachelor of Biomedical Science for consideration to enter the Auckland Medical School to study for a Bachelor of Medicine and Surgery

Bream Bay College senior prize list on page 10.

OPEN HOME



One Tree Point 17 Manaia View Road

421sqm 3 1 1

Asking Price \$665,000

View by appointment

Jan Anderson Halliday 021 380 032 jan.anderson@bayleys.co.nz

MACKYS REAL ESTATE LTD, BAYLEYS, LICENSED UNDER THE REA ACT 2008

Classic beach bach - don't miss out!

Here's your chance to secure a classic kiwi beach bach or make this your first home, at a price you probably never thought possible in such a great location. An opportunity to get on the property ladder, alternatively you can enjoy it as a holiday pad now and renovate later or come with a vision for a total transformation. The cottage was re-located to the site 22 years ago, when it was rewired, re-roofed, new aluminium joinery was installed a little later and it has been enjoyed as a family holiday home since. This is a fabulous opportunity waiting to be snapped up. Don't miss out - call today.

bayleys.co.nz/1060315

BAYLEYS

From February 2023 no more rubbish disposal and recycling at the Uretiti Campground

From February 1 2023 the Department of Conservation will be requiring all the people using its Uretiti campground to take their rubbish with them when they leave.

DOC's Whangārei Operations Manager Joel Lauterbach said the new policy means DOC will no longer be processing campers' waste on site and disposal will become the responsibility of individual campers.

"In the past we have operated large rubbish and recycling services at our campgrounds."

With the popularity of our conservation camping facilities ever increasing, this is no longer the most environmentally responsible option. We can't continue to accommodate the disposal of massive amounts of rubbish from our campers," Lauterbach said.

"By moving to 'pack in, pack out' we are encouraging campers to think as much as possible about the rubbish they are creating so they can keep it to an absolute minimum and lessen the environmental impact of their stay."

"We hope campers will agree this is a much more conservation-minded approach than what has been offered in the past. We understand this is a significant change in responsibility for some campers."

DOC operates four campgrounds in its Whangārei District. Of these Puriri Bay, Otamure Bay and Uretiti are subject to the new rubbish removal policy. Waikahoa already operates a 'pack in, pack out' model.

This new policy is not good news for Graham Boulton who is Chairman of The Waipu 2000 and Beyond community trust, which holds a contract with the Whangārei District Council to keep the streets of Waipu clean and tidy.

Graham said there is already a problem with freedom campers and some local residents stuffing their household rubbish into the town's rubbish bins.

"It's a dumb idea there is enough rubbish dumping on the roadsides already."

Malcolm Norton of the Waipu Lions who have

requirements the Lions are no longer able to do these clean ups but he is concerned that this new Department of Conservation policy at the Uretiti campground will lead to more rubbish around our local roads

"It will be the Council's responsibility to clean this up and ultimately the cost comes back on local people." Councillor Ken Couper suggested that Council rubbish bags be sold at the camp office and a caged area where the rubbish truck could pick these up be built inside the campground.

However in response to this suggestion Abigail Monteith, Communications Advisor for DOC said, "We are aware of the feedback to the change and are working with stakeholders on this. We have a meeting with the Whangārei District Council in a fortnight."

"Our overall goal is waste reduction, not just moving the waste to a different location in the camp, which creates its own issues such as rodents and hazards. Recycling is not offered to us in the same way it is to a ratepayer. A pack in pack out approach is not new and is done at other very busy campsites in Aotearoa. We will be providing good information about nearest refuse stations – which in the case of Uretiti is in very close proximity at Tip Road."

organised roadside rubbish pick-ups in the past is also concerned. He said because of new health and safety



Can you help with a survey on seaweed strandings in Bream Bay ?



The Waipu Cove Reserve Trust Board has commissioned Cawthron Institute to design a monitoring programme of algae on the shore and in the water column in the area.

This is a citizens science project and local people are encouraged to record any sightings of the nuisance seaweed they come across

If you would like to participate please contact the Waipu Cove Reserve Board
waipucovereserveboard@gmail.com

Kainga Ora at the Ruakākā Residents and Ratepayers meeting

Continued from page 1.

their jobs, the schools their children attended or for family reasons she would do what she could to enable this.

Asked about how long the project is likely to take Jeff Murray, Regional Director of Kainga Ora in Northland said a final decision would be made in March 2023.

He expected that once the decision had been made and resource consents granted the build would take around nine months.

Asked if it would not be preferable to scatter the state homes rather than to build them all in one location, he replied that, while sometimes kainga ora purchased homes in housing estates built by private developers, it was more economical to build multiple homes in a single development. Also it made sense to build on land kainga ora already owns.

Twenty-two houses would be demolished each to be replaced by three new homes.

Asked about the effects of new people coming to live in the villages where there is a well established community, Mrs. Haunui said it was the intention that people be able to live well in the new homes and applicants for new state houses would be interviewed to see if this location is the right fit for them. She said there is a possibility that a community room be part of the development.

Mr. Murray said, although in some kainga ora redevelopments the homes were able to be recycled, the Ruakākā village houses were 30 years old and of a poor standard and would be demolished.

Mrs. Haunui spoke about how the number of individuals and families on the waiting list for state houses in Northland had increased dramatically in the last decade and now stood at 12,000.

Mr. Murray said, despite the huge need, by comparison with other parts of the country there had been very little building of new state homes in this region and he and his staff are looking at where new developments could be undertaken.

Flood pictures



McCathie Road was impassable to most vehicles for much of Friday 11 November



The Waipu Skatepark under water

Heavy overnight rain in the western hills combined with a high 2.6 metre tide at 10.23 am on Friday morning 11 November caused some big floods in low lying areas of Bream Bay with many roads impassable to traffic.

The Ruakākā River broke its banks with muddy water sweeping out across the low-lying land opposite the Ruakāā Towncentre and across McCathie Rd.

In most areas the floodwaters receded quickly as the tide turned and the swollen rivers flowed into the sea.

**BREAM BAY
CURTAINS
BLINDS
AND SHUTTERS**

PH 0204 632 432
FOR A FREE IN HOME
CONSULTATION
CALL SUE

AVAILABLE 7 DAYS A WEEK COVERING
WHANGAREI TO MANGAWHAI, INCL KAIWAKA
BBCURTAINSANDBLINDS@GMAIL.COM

CALL SUE TODAY
0204 632 432

ATLAS

QUARRIES
CONCRETE

Thinking concrete but don't know where to start?

Think Atlas Concrete

- We quarry the aggregate
- We manufacture the concrete
- We site visit to advise the best options
- We give you the choice of mix and colours
- We give a choice of local placers for you to choose
- We manufacture concrete to your requirements
- We stand by our product, you stand on it

Atlas Concrete

Your First Call for Concrete

Ph: 0800 888303 - Brynderwyn
or 432 5030 - Ruakaka

SELLING LAND
IS WHAT I LOVE TO DO

MACKYS REAL ESTATE LTD, BAYLEYS, LICENSED UNDER THE REA ACT 2008

Catherine Stewart | 027 356 5031 | catherine.stewart@bayleys.co.nz

BAYLEYS

ALTOGETHER BETTER

Residential / Commercial / Rural / Property Services

SOLD

45ha
Dairy

148 Cullen Road, Waipu

SOLD

20ha
Grazing

386 Rehutai Road, Bayliss Beach

SOLD

28ha
Lifestyle

2174 & 2192 Omana Road, Tangiteroia

SOLD

146ha
Dairy

610 Te Kowhai Road, Ruawai

BREAM BAY STORAGE
 INSIDE/OUTSIDE storage at 50 Cove Rd., Waipu
Free phone. 0800 432 135
enquiry@breambaystorage.co.nz
www.breambaystorage.co.nz

RUAKAKA SAFE STORAGE
 99 MARSDEN PT ROAD, RUAKAKA
 92 Units from 6 x 3 to 1 x 1
 Each unit individually alarmed and monitored
 Electrified security fence
Ph. 0508 273 262 or 0275 310 788
CLEAN - DRY - SECURE

THE NEXT PUBLICATION DATE
 of the Bream Bay News will be Thursday 1 December
 The deadline for all copy is 4pm on
 Wednesday 23 November

Memorabilia needed for history of education display

By Melinda Butt

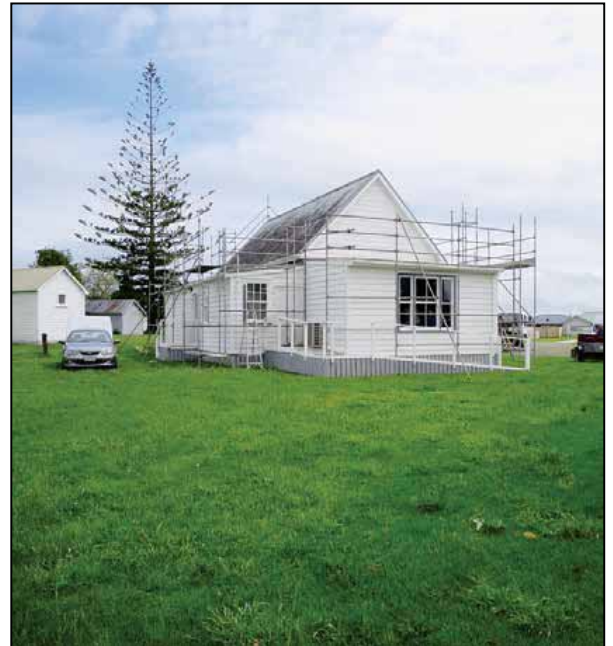
For the past two and a half years a group of volunteers have been restoring the First Waipu school that was originally built in 1870. The restoration process has been taking place every Thursday and is now almost complete.

Education first began in Waipu in 1857. The school house was originally built in 1870; it continued to be the central school until 1925. After that time it was moved to where the Presbyterian Church now stands and was used for the next 90 years as a hall, particularly for Sunday school teaching. When the new hall was built it was moved to its present location in the historic precinct behind the Waipu Museum.

To celebrate the new opening, an exhibition of the history of education in Bream Bay will be taking place.

The Waipu Museum is hoping to get the community involved and is calling for any memorabilia that could be part of the display. If you have, or know of someone who might have any items of interest that they would be willing to lend please contact the museum - 432 0746.

Uniforms, photos, school books and bags, anything connected to education from 1800 - 1930 would be welcomed.



Restoration of Waipu's first school almost complete

Northpower

Latest news & updates from around our Network

Northpower electricity consumers to receive \$12.4 million in annual discount payment

Northpower electricity consumers will receive around **\$12.4 million** thanks to Northpower and the Northpower Trust. This is an increase of over \$0.7 million from what was paid last year, and the fourth year in a row that this consumer discount, which is paid at this time every year, has increased.

"We are very pleased to offer this discount back to Northpower's consumer owners, as we know what a difference it makes to so many households," says Northpower Chair Mark Trigg.

Most residential and business electricity customers connected to Northpower's network will benefit from a discount of \$254.15 inc GST in November or December. The only exception to this will be those who have used between 1kWh and 2,000 kWh for the prior year, who will receive a discount of \$94.88 inc GST.

The discount will be shown as a credit on customers' November or December electricity bills and will benefit over 61,000 current customer connections on the Northpower network. The annual Northpower Pricing Discount is made possible with the support of the Northpower Electric Power Trust, which owns Northpower on behalf of consumers connected to the Northpower electricity network.

To qualify as eligible, consumers must have an active network connection as at 1 November 2022. Full details of the eligibility criteria are available on Northpower's website northpower.com/pricing/pricing-discount-faqs.

Since 1993, with this annual payment, Northpower and the Northpower Trust will have given back over \$264 million to electricity consumers in Kaipara and Whangarei. The Northpower Trust owns Northpower on behalf of consumers connected to Northpower's electricity network in Whangarei and Kaipara Districts.

You will see a credit on your November or December electricity bill!

Those who don't receive **\$254.15** (inc GST) could receive **\$94.88** (inc GST) - you can learn more here: northpower.com/electricity/pricing

A breakdown of your power bill

Opening balance	\$0.00
Current charges (inc GST)	\$260.00
Northpower Pricing Discount (inc GST)	\$-254.15
Total amount due	\$5.85

Find out about Unplanned Outages

If you are experiencing a power cut go to northpower.com (on your mobile device) to check the latest information and updates on outages.

If your outage is not showing on the website, please call **0800 10 40 40**. For large outages we also post the information and updates on our Northpower facebook page.



PROBLEMS WITH YOUR HOT WATER?

Call us if you would like advice or go online for more information: northpower.com/electricity/advisory/hot-water-advice

ENERGY SAVING TIP:

- Defrost freezers regularly, the more build-up of ice the harder the unit has to work.



Thomas Henry Rise

A street sign has been installed at the entrance to the road leading up the hill to where the proposed new Ruakaka cemetery will be built, this despite the purchase of the cemetery land from Bruce and Gaye Cann having not yet taken place.

The Whangarei District Council has an agreement with the Canns that it will purchase the land subject to a resource consent for the cemetery being obtained.

The new road's name: *Thomas Henry Rise* was chosen by Gaye and Bruce. Their first choice was Belle Vue remembering the mansion by that name that once



The new street sign

stood at the top of the hill.

This name however is already taken – there is a street named Bellevue Way in Otaika.

Thomas Henry was an Irishman who purchased 8041 acres of land at Ruakākā and built the Belle Vue mansion in 1865 for himself, his wife, his seven children and his old friend and secretary Robert Buckham. The mansion had an entrance hall and six rooms on the ground floor with a sweeping staircase leading to five more rooms above. A verandah wrapped around three sides of the house and two of the downstairs rooms had doors, which could be folded back to make space for a ballroom.

Thomas Henry imported cattle from Sydney to graze the land and is also said to have run a pub – *Henry's Inn* at Marsden Point.

In 1978 he sold the Belle Vue estate to Mr. McFarlane of Henderson and MacFarlane, an Auckland shipping company, and moved to Mangapai. He died there in 1890 while planting trees on this property and is buried at the Mangapai Cemetery.

Gaye Cann said naming the road was required by the Council for the subdivision enabling part of their land could be sold to Kiwirail for the proposed new rail spur to Marsden Point and for the sale of the cemetery land.

A sum of \$600,000 has been set aside in the Council's 2022-2023 budget to purchase the cemetery land. More funding for cemetery development would need to be allocated in the next review of Long Term Plan due in 2024.

Christmas Evening at Waipu Pharmacy

Please come along to celebrate Christmas with us! We want to say thanks for your support in 2022 and have filled our store with gorgeous gifts and summertime goodies to enjoy.

While shopping, you can enjoy a glass or two of bubbles, delicious morsels and receive **20% discount on gifts, cosmetics and skincare.**

We can also offer you Free gift wrapping – (you may need to return for your wrapped parcels)



Where: Waipu Pharmacy

When: Thursday 24th Nov

Time: 6.00pm – 8.00pm

Bring: A friend or two

We look forward to celebrating with you!

Brenda, Jasmine, Rachelle, Lisa,
Cally, Kahli, Mya, Casey

As seen on Grand Designs 2019

COASTAL CONSTRUCTION PROJECTS

0274 320 007

REGISTERED MASTER BUILDER QUALIFIED TRADESMAN CARPENTERS MARCUS@CCP.NZ WWW.CCP.CO.NZ

GIFT SHOP

A great place for gifts

36 The Centre, WAIPU 0510

WAIPU
Scottish Migration
MUSEUM

Waipu Presbyterian Parish

Contacts:
Minister - Tom Waight - 432 0534
Mainly Music - Sharon Smith - 432 1050
Toy Library - Julie Malone - 432 0388
Church Hall Hire - Cally James 432 1536
Family Welfare & Foodbank:
Co-ordinator - Helen Matheson - 432 0239
Budgeting Advice - Bruce Matheson - 432 0239
The Crossroads Trust (financial support) Peter Couper - 432 0524 or email lynettejones@xtra.co.nz

Sunday Services
Ruakaka - Camellia Ave - 8.45am
Waipu - 50 The Centre - 10.15am

*Working with you
- for your Community*

Pictures from the Villy Day Out



Hangi team members: Naphtali Pumipi, Mars Hawaikinui, Cole Tarau, Eddie Wilson and Muzza Epiha (Muzerati) Three hangi holes were needed to provide 500 free meals.



Kieran Joseph, aged nearly 11, enjoyed a ride of Geoff Harry's Indian motorbike Geoff is a member of the Hard'n Fast Motorcycle Club.



Whaea Lulu Bell, aka Lisa Minhinnick creative director of the popular Māori Television children's show Mahi Pai, returned to her home town of Ruakaka with her troupe of colourful dancing taniwha. Lisa said the name Lulu Bell was given to her by her Nan when she was a small child. Mahi Pai has recently returned from a trip to Brisbane where the group performed before indigenous people there.



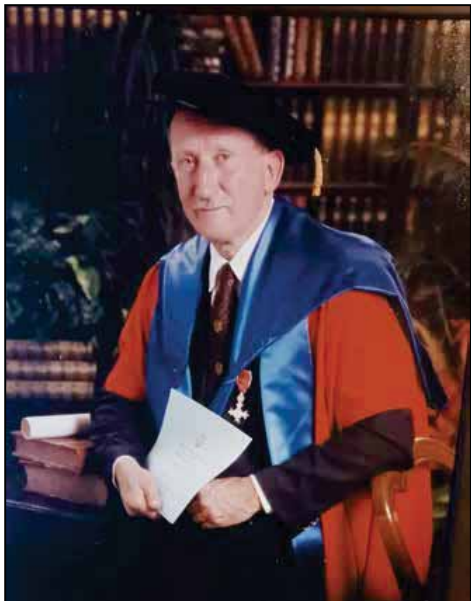
Hawaiki Whana (almost three years old) waving a bubble wand from the height of his Dad Javarn Whana's shoulders.



Spencer Thirkell lined up with his dad for an ice cream

Dr. Terrance John Ryan MBE

2.05.1942 - 27.10.2022



Dr. Terrance Ryan

A service for Dr. Terry Ryan was held in the Waipu Presbyterian Church on Wednesday 2 November.

Dr. Ryan died at his home in Christchurch on 27 October and had lain at Te Rehua Marae before being brought back to Waipu.

Thousands of people came to the marae to pay their respects to the man who had helped to set up Māori trade apprenticeships, worked as private secretary to the late Dame Tirikatene Sullivan and who was an acknowledged authority of the contemporary whakapapa of the Ngai Tahu people.

Terry began work on the Ngai Tahu genealogy bank in 1974 as a researcher for the iwi's treaty claim.

He also helped to draft the legislation that recognized Te Reo Māori as an official language of Aotearoa.

In 1995 he was made a Member of the British Empire for his service to the Māori community of the South Island and in 2001 received an honorary doctorate from Lincoln University for his services to genealogy.

Terrance Ryan grew up in Waipu and continued to return regularly to the house, which had been built by his ancestors Hugh and Mary McKenzie on their ar-

rival from Cape Breton. He told his neighbour and cousin Lachie McLean that he found comfort in looking out at the lights he could see from his home and remembering how the people in those houses were related to him.

Lachie said Terry's interest in genealogy had come from his great Aunt Annie McLeod who had lived in his home when he was a child.

"She would also pass on to him Gaelic expressions, which her parents and relatives, who were born in Nova Scotia, had used. To make them more than just names, she told stories about these people which he absorbed and in turn was able to pass on."

Terry's younger brother David remembered how the old lady's face would light up when Terry was around.

David told how Terry had attended Wesley College where he had first developed an interest in te reo and kaupapa Māori. On leaving school he had worked at the Waipu telephone exchange before landing a job with the Māori Affairs office in Whangārei. From here he moved to a job in the Wellington office and over the years had served Māori in many different capacities.

Heather Jacobson, Chairwoman of the Waipu Museum, said, "Terry's passion for his heritage and his encyclopedic knowledge of not just his own, but many other families' genealogy, is legendary."

"He was the child we all wish we could have been, who would sit and listen to his elders, especially his adored 'Nannie'"

Heather said, "Terry Ryan was a much loved and well-respected member of the family for all of us at the Waipu Scottish Migration Museum."

"He was a very intelligent, but humble and gently spoken man who we all loved to spend time with and listen to."

"We have been asking him for a few years when he will be returning permanently to Waipu. This is not the way that we wanted it to happen, but it is fitting that he returns to his turangawaewae for his eternal rest amongst his ancestors and cousins."

Rehua Marae, Kaumātua, Ruawhiti Pōkaia told those gathered for the Waipu service that Terry had formed a bridge between Waipu and Ngai Tahu.

The Waipu Museum flag flew at half-mast from the date of Terry's death until his burial.

BIG RED

TRUCKING

Owner /Operator Duncan Mackay



GENERAL CARTAGE SERVICE

Metal / Topsoil / Sand / Manure / Hay / Silage



WATER

Prompt Delivery And Reliable Service.

Healthboard Approved Drinking Water Carrier.

Call 021 070 8211



MILLBRIDGE

ENGINEERING

ON SITE WELDING

MOBILE SERVICE

HEAVY & LIGHT FABRICATION

REPAIRS & MAINTENANCE

ALUMINIUM & STAINLESS

Rory McLean ☎ 021 55 77 94 | 09 556 0558

✉ rory@millbridge.co.nz 🌐 www.millbridge.co.nz

Hello Bream Bay
In 2023 a special VIP Voyage to Antarctica will be hosted by Sir John Key and Mike Stroud OBE. Places are limited so get in touch to book.

Escorted VIP Antarctica Cruise
Departs: 23 Nov 2023
From \$17,950

- VIP Antarctica Cruise with Sir John Key & Mike Stroud OBE.
- Escorted trip from Auckland
- Captains welcome & farewell cocktail reception
- All daily meals provided. Optional drinks package available
- Collectable Antarctica parka jacket to keep
- Shore landings and excursions
- Pre & post cruise accommodation
- Very limited once in a lifetime opportunity

09 394 2206
jared@travelmanagers.co.nz

Terms and Conditions apply. Price is per person twin share

SKIN CANCER DOCTORS

We are a primary care skin cancer clinic located in the Whangarei Town Basin. We focus on the early diagnosis and effective treatment of skin cancer in a friendly and welcoming environment.

- ✓ Full Body Skin Checks
- ✓ Dermoscopy Analysis of Moles
- ✓ Surgical & Non-Surgical Treatment
- ✓ No Referrals Needed
- ✓ Southern Cross Affiliated Provider
- ✓ Accredited Skin Cancer Doctors with the Skin Cancer College of Australasia

09 438 2188
131 Lower Dent St., Whangarei
admin@skincancerdoctors.co.nz
skincancerdoctors.co.nz

Dr. Christian Wieser and Dr. Shirley Wallace.

Remembering Armistice Day in Waipu



It was raining cats and dogs on Friday morning at 11am on 11 November when the Waipu RSA was about to hold a short ceremony to mark Armistice Day.

The ceremony went ahead with a small group of RSA members taking part but was moved to the RSA clubrooms in Nova Scotia Drive.

Pictured above are: Alan Smith – Waipu RSA Secretary/Treasurer, Geoff Grey – Past President, Rod Lindop – RSA member and Paula Goodhue – Waipu RSA Women's President.

THE NEXT PUBLICATION DATE

of the Bream Bay News will be Thursday 1 December
The deadline for all copy is 4pm on
Wednesday 23 November

Surf shop is “something positive for the young people of Waipu”

The Surf Shop located in what used to be Trevor Vaile's garage isn't brand new in Waipu. It first opened back in February but business owners Ellen and Grae Snelling are ramping things up for summer. They have recently taken over the whole workshop space and are busy getting this tidied up and fitted out to display their merchandise. The shop is closed this week while they move into the new space. It will re-open on Monday 21 November.

The building was once the warehouse for a general store alongside in what is now the recycling shop Industry. Goods were bought up the Waipu River on scows and then delivered to the warehouse on horse drawn wagons. Ellen said the rustic look suits the atmosphere she and Grae want for the shop.

Grae remembers the surf shops of his youth as “hubs for the community” and he wants to recreate this in Waipu.

Grae and Ellen also run the Surf School at Waipu Cove and have developed their own surf-clothing label – *Surf Shack* using designs by local artists.

Grae said, “We have all the core surf labels but we also have clothing and surf boards made locally. We do our best to keep things local.”

He sees the shop as something positive for Waipu, especially for the town's young people.

Ellen and Grae are both from Australia, although Grae's mother was a kiwi.

He says they will deal as much as they can in New Zealand and Australian made goods.

As well as surfboards and clothing, they will also stock skateboards and skateboarding gear. And they have four electric bikes for hire. This is an experiment.

Ellen said, as with their surf school, they are willing to try new angles for their business and see how they go.



Ellen and Grae Snelling in their Waipu shop

Bream Bay College Senior Prizegiving – Major prize winners

Year 11

Sports person of the Year – Dux Ludorum – Izaiah Linton

Outstanding Citizen Awards: Alessandra Hamilton, Lila McEvoy, Harris Lymburn, Levi Williams.

First in Year 11 : Troy McKenzie and Morgan Ellwood. 2nd Harris Lymburn and Abby Thompson.

Year 12

First in Year 12: James Lewis and Eva Harvey. Second in year 12: Joel Tolley, Nyria Pullen and Bridget Cullen.

Best all round sports person – Jessica Andrews.

Year 13

Young Enterprise Awards: Excellence in Technology: Zara Jacobson, Mirabella Uphof and Alex Lynch. Excellence in sustainability-Hayley Griffiths Award for contribution to student council – Zara Jacobson and Kiera Carroll. Contribution to Cultural Council – Carys Tuhiwai.

Contribution to Sports Council – Hayley Griffiths

Lear Cup Endeavour – Jessica Benson

Waipu Anglican Opportunity Shop Apprenticeship Awards: Charlie Guy, Michael Ryland, Amy Swanson, Dakota Watts.

Rose Waerea and Gordon Lee Cup for Innovation and Enterprise in Music – Mirabella Uphof.

Marsden Lions Trophy: Kiera Carroll and Max Whitehead

Outstanding work as student trustee – Max Whitehead

KT Footwear Integrity Award – Dakota Watts

Kururangi Citizenship Cup – Amy Swanson

Waipu Lions Citizenship Cup - \$500 – Zara Jacobson

Harvey Abercrombie Award – Georja Loft, Maya Newing Peters.

George Watt Scholarship Award -\$2,000 per student: Karli Babe-Vercoc, Kiera

Carroll, Niamh Gooseman, Casey Gravatt, Zara Jacobson, Alex Lynch, Abbey McKegg, Mirabella Uphof, Alex Lynch.

Proxime Accessit – Alex Lynch

Dux – Mirabella Uphof

Dr. McBirney Trophy - \$1,000 – Mirabella Uphof.

University Scholarships and external awards:

Prime Minister's vocational excellence award -\$2,000 Michael Ryland

Hyundai Pinnacle Programme – Mirabella Uphof

University of Auckland Top Achievers Scholarship - \$22,000 - Mirabella Uphof

Joan Kennaway Memorial Fund Scholarship - \$1,000 – Mirabella Uphof

AUT Welcome to Auckland Scholarship - \$21,640 - Karli Babe Vercoc.

University of Otago Māori Entrance Scholarship - \$15,000 - Hayley Griffiths

University of Auckland Academic Potential Scholarship - \$6,000 – Zara Jacobson and Alex Lynch

Massey University Undergraduate Scholarship - \$6,000 – Xavier Bird.

Whangārei MP's Award for contribution to racial harmony – Chasedy Agustin

2023 School leaders

Head girls: Jessica Andrews and Emma Gorrie. Head boys: Kael Heiwari and Connor Williams.

House Leaders:

Sutherland: Nicole Botha, Bailey Whitelaw, Ciaran Kay, Cohen Morgan Webb.

Argyll: Rico McLean, Sophie Hall

Ross: Michael Doak, Phoenix Atkins, James Lewis, Madison Dackers

Inverness: Braedyn Kenny, Zane Cullen, Paige Comer, Shynesse Tuki

Maori Leaders: Rangitira Tane – Michael Doak. Rangatira Wahine - Tayah Wilson.

Inter House competition winner – Ross.



**Apply Now
for 2023**

Start your learning journey in 2023.
NorthTec | Te Pūkenga have programmes on
offer right here in Northland in the following areas:

Agriculture | Apiculture | Forestry | Horticulture
 Architectural Technology
 Automotive Engineering | Commercial Transport
 Baking | Cookery | Food and Beverage | Hospitality
 Beauty Therapy | Hairdressing
 Business | Business Administration
 Carpentry | Construction | Painting | Plumbing
 Civil Engineering
 Conservation | Environmental Science | Pest Operations
 Creative Writing

Digital Arts
 Electrical Engineering | Mechanical Engineering
 Information Technology
 Nursing
 Social Services | Health and Wellbeing
 Sport and Recreation
 Study and Career Preparation
 Toitu Te Reo (Māori language)
 Toi Te Wai-ngarahu (Māori Arts)
 Travel and Tourism

E hara taku haerenga I te haerenga takitahi, ēngari he haerenga takimano no ngā whānau kei taku taha.
 My journey is not one I take on my own but it is a journey of the many whānau who walk with me.

☎ 0800 162 100
 ✉ study@northtec.ac.nz
 🌐 northtec.ac.nz



NorthTec
 TAI TOKERAU WĀNANGA



Te Pūkenga

Stay close, go far – noho tata, haere tawhiti



Safeman Safefamily Men's Centre

Safeman Safefamily offers a safe place for men to talk privately without judgement and with complete confidentiality.

We are peer led and professionally supported and offer a range of services and support for men and their families.

The services we provide are as follows:

- Advocacy Navigator
- Court support
- FGC Support
- Probation Community Service Provider
- Legal Advice
- Marriage Celebrant
- House and property blessing
- One to one counselling
- Drug and Alcohol support
- Anger management group sessions
- Supervisor for court ordered access
- Work brokers/ help with employment opportunities.

No appointments are necessary, we have an open door policeu - if you need help or know someone that does just come on down to: **9 Takutai Place, Ruakākā**. We are right next door to Jimmy's Barber Shop or I can be reached by phone 021 121 0763 - Phil Paieka

Ruakaka Stationery & Gifts



Ruakaka Town Centre

Shop local for all your needs:
Stationery, Books, Toys, Magazines
Greeting Cards, Clothing,
Gifts & Souvenirs

**Phone
432 8104**



Open Saturday until 7pm.

THE NEXT PUBLICATION DATE

of the Bream Bay News will be Thursday 1 December
The deadline for all copy is 4pm on
Wednesday 23 November

MARSDEN POINT HIGH TIDES

	AM		PM	
Thu 17 Nov	2.10	2.1	2.43	2.4
Fri 18 Nov	3.04	2.2	3.36	2.3
Sat 19 Nov	4.02	2.1	4.28	2.3
Sun 20 Nov	5.01	2.2	5.19	2.3
Mon 21 Nov	5.57	2.3	6.09	2.4
Tue 22 Nov	6.50	2.4	6.59	2.5
Wed 23 Nov	7.40	2.5	7.43	2.6
Thu 24 Nov	8.29	2.6	8.38	2.6
Fri 25 Nov	9.18	2.7	9.29	2.7
Sat 26 Nov	10.07	2.8	10.20	2.7
Sun 27 Nov	10.57	2.8	11.13	2.5
Mon 28 Nov	11.49	2.8	~	~
Tue 29 Nov	12.06	2.6	12.43	2.7
Wed 30 Nov	1.02	2.5	1.39	2.7
Thu 1 Dec	2.01	2.4	2.37	2.6
Fri 2 Feb	3.02	2.4	3.36	2.5

Christmas events in Waipu

"Well it is getting close to that time of year again and with things going "back to normal" we can start planning the communities Christmas events", said Juanita McGoldrick of *Promote Waipu*.

"We are pleased to advise that the Christmas Parade is full steam ahead in the planning phase. So we are calling on all business, sports groups, community groups or individuals to design a float!"

There are some generous prizes. The first place getter receives \$1000, 2nd \$500 and 3rd \$250 plus there is a \$300 prize for the most environmentally friendly effort and another \$300 for the best community group float. To enter your float please email your details to events@promotewaipu.co.nz

Due to its success last year of the decorate your letterbox competition (which was held in place of the Christmas Parade called off due to Covid 19 restrictions) this will be held again this year. With funding from Northpine, Promote Waipu will be giving away "starter packs" of decorations which can be picked up from Northpine on Saturday 26 November from 10am to 12 noon and again (if stocks last) on the 3 December from 10am to 12 noon. You then need to add your own bits and pieces (or design your own completely) and email a picture and your contact details to events@promotewaipu.co.nz First, 2nd and 3rd prize winners will have their prizes delivered on the 17 December by Santa in the Fire Truck! "So get your creative juices flowing and let's decorate Waipu!"



Last year's decorated letterbox winner

Art & Tartan + 2023 - Anything Goes!

Anything goes in 2023! Art & Tartan + will be held on September 29 & 30, 2023 with a production theme of the myths and legends that dreams are made of.

Tartan will remain as the point of difference for this contest but in 2023 Art&Tartan+ also wants to see lots of entries representing all the different cultures in Tai Tokerau and beyond - from the iwi of this region, to the Scots who came to Waipu, the Dalmatian families of the gum fields, and the many Asian cultures that are now part of our vibrant diverse community.

Sue Welford of the organising committee said, "The aim is to make Waipu's Art & Tartan + bigger, brighter and even more amazing."

Artists and designers are asked to think of the myths and legends that dreams are made of for their whanau and create wearable art to represent this.

As always there will be a major prize for the best use of Tartan in a full body garment and in 2023 there will be two open sections - one for complete full-body garments and the other for separates and accessories - anything from hats to masks, bras, bikinis, sporrans,

shoes and bags or a combination of several. In addition other, special, prizes will be awarded to designers for different aspects of their creations. For the children there will be a masks competition with a super heroes theme.

Sue said, "Wearable art can be made of anything, other than perishables. Literally anything goes! Think black and white art, creations that glow in the dark, wearable art with driftwood or metal, the night sky, the dawn, my heritage, my culture, my home, the depths of the ocean, climate change, protecting our native species... sport - the possibilities are endless. We could go on and on. Let imagination run wild!"

Entries will open on 1 December with an Early Bird Special of \$30.00 per entry until 31 January. Entries from 1 February to 30 April will be \$50 per entry. Full details about payment will be on the Entry Form which will be available online at www.waipumuseum.com or from the Waipu Scottish Migration Museum, 36 The Centre Waipu.

Youth variety show returns

The annual youth Spring Symphony Variety Show is returning after a gap last year because of Covid restrictions and scheduled for Saturday 3 December at 4pm in the Waipu Coronation Hall.

Organiser Ached Abman said, "Our young artists from the wider Whangārei region are practicing in all their genres including: music, dance, theatre and circus."

Included in the programme this year is a new youth orchestra Sistema Whangārei-Toi Akorangi.

Achmed, who has been running these annual shows since 2017, said performing on stage before an audience is "so rewarding for those young artists. For some it is their very first big show."

Family Picnic Challenge

Connecting Communities
Marsden Cove Marina
DECEMBER 3RD

Thanks also to

\$20 Per Family Team!

Proudly supporting
Parafed Northland
INCLUDING SPORT & RECREATION FOR ALL NORTHLANDERS

Limited entries! To register visit www.parafednorthland.com

Join us

for the Ray White Bream Bay & Waipu Family Picnic Challenge!

In conjunction with Parafed Northland

An inclusive fun family event where the whole family can enjoy a day out together. The challenge follows the footpath around Marsden Cove Marina and along the course participants need to complete different challenges to move on. Finish the challenge with a picnic at the Marina.

- When: Saturday 3rd December
- Time: 9:30 am Start
- Where: Marsden Cove Marina
- Cost: \$20 per family team (Max 2 adults & 4 children)
- Register through our website here: <https://www.parafednorthland.com/event-details/family-picnic-challenge>

Don't forget to register for our local fun day out!

Spaces are filling quickly with limited entries

Guaranteed to be a great day out for the whole family and an awesome way to connect with other local families whilst having some fun.

Cool challenges and prizes.

Register here... <https://www.parafednorthland.com/event-details/family-picnic-challenge>



Local people read
THE BREM BAY NEWS
It is an effective
place to advertise

Auditions for Penalties, Pints and Pirouettes on December 4



The April production of Neil Troost's play Penalties, Pints and Pirouettes is needing two female and eight male actors of various ages, sizes and shapes and will be raising funds for the Coronation Hall. The comedy play, directed by Blair Strang, is about a down and out rugby club who get roped into performing ballet at a PTA variety night. Anyone interested in learning more can email waipupenalties@gmail.com

Free entry to mark Wes and Barb's 50th wedding anniversary

Wes and Barbara Bycroft, who make up the Celtic music duo Twisty Willow, have decided to make the evening of dancing and music they are hosting in the Waipu Coronation Hall on Saturday 19 November a free gift to the local community. They recently celebrated their 50th wedding anniversary and Barbara will turn 75 a few days before the 19th.

The night will begin at 7.30pm finishing at 10.30pm. Wes and Barbara will play a selection of Scottish jigs and reels for people to dance to. Please bring your own water bottle and a plate of finger food for a shared supper.

Full line up of concerts at Tahamoana

Debi Walters Brown and Dave Brown have a series of summer concerts lined up for their outdoor venue at Tahamoana Angora goat farm at 566 Cove Rd. overlooking Bream Bay.

On 7 January 'Sirrah' Dance the night away with the Latin influence of drums to classic well known songs 7-10pm

On 21st January 'An Eclectic evening of music' 6-10.30pm

On 28th January 'Jazz on a Summers Day' 2.00-6.30pm

And on 5th February 'Rods and Rockers' 3pm -11pm, after the Waipu Car and Bike Show. Tickets are available from eventfinda and at the gate.



- ❖ Chemical and non-chemical house washing
- ❖ Window and house cleaning
- ❖ Painting and staining - exterior house, decking and fences
- ❖ Water blasting - decks, driveways and courtyards
- ❖ Clean guttering and downpipes
- ❖ Pest control and spider spraying
- ❖ Tree trimming with extension saw

Phone now for a FREE QUOTE

REVITALISE ❖ PRESERVE ❖ PROLONG ❖ MAINTAIN

TONY 021 196 2949 OR MELISA 021 075 6770

WHAT'S ON IN BREAM BAY

- **NZ SPEARFISHING CHAMPIONSHIPS FISH AUCTIONS** At the Marsden Cove Marina Reserve. Saturday 19 November and Sunday 20 November both days from 4.30pm. Proceeds to the Ruakaka Fire Brigade.
- **REELING IN WAIPU** Energetic called dancing to live Scottish jigs and reels played by Twisty Willow Celtic Band. Saturday 19 November, in Waipu Coronation Hall, 47 The Centre, 7.30 to 10.30pm. Bring cold finger food for shared supper and own water bottle. Free entry
- **OTP MARKET**. At OTP Primary School. Next on Sunday 20 November, from 9am - 1pm. Call Sue 021 530 153 to book a stall. Profits donated to Whangārei Hospital children's ward.
- **WAIPU DECORATE YOUR LETTERBOX COMPETITION**. Starter packs of Christmas decorations can be picked up from Northpine on Saturday 26 November from 10am to 12 noon and again (if stocks last) on the 3 December from 10am to 12 noon. Prizes for 1st, 2nd and 3rd place delivered by Santa on the Waipu Fire Truck on Saturday 17 December.
- **PAPAROA ARTISAN MARKET** Locally produced arts, crafts and food. Next on 27 November from 12 noon to 4pm, then ongoing on the 4th Sunday of every month. In the Paparoa Memorial Hall
- **COMMUNITY BINGO** Wednesday 30 November at the Waipu Citizens and Services Club Calling starts at 7.30pm. Every one is welcome open to the public Restaurant is open from 5.30 Jackpot \$270 within 63 calls.
- **CAR BOOT SALE** at the Bream Bay Community Trust, Takutai Place, Ruakākā at 3pm on Thursday 1 December.
- **FAMILY PICNIC CHALLENGE** at Marsden Cove Marina. Saturday 3 December. \$20 per family team. Visit www.parafednorthland.com
- **SPRING SYMPHONY YOUTH VARIETY SHOW** Saturday 3 December. 4pm in the Waipu Coronation Hall. Entry by Koha.
- **MUSIC CLUB AT THE RUAKAKA RECREATION CENTRE**. Next on Monday 5 December. 7pm - 10pm.
- **WAIPU BOUTIQUE SUNDAY MARKET** Next on Sunday 11 December from 9am - 1pm in the Coronation Hall
- **RUAKAKA CHRISTMAS PARADE**. Saturday 17 December. Starts at 10.30am alongside the Ruakaka Library. Float prizes, bouncey castle and funny money to spend at the Ruakaka Towncentre shops.
- **THE WAIPU CHRISTMAS PARADE** New Years Eve down the main street of Waipu. Start time 7pm with prizegiving in the Caledonian Park from 7.30pm.
- **THE KAURI MUSEUM**. The Kauri Museum is open 9am-5pm every day except Christmas Day. 5 Church St., Matakōhe.
- **WAIPU MUSEUM** 36, The Centre, Waipu. Open seven days 10am - 4pm. New Tangata Whenua exhibition.

Kaiwaka to Whangārei

SERVICE OPERATES EVERY THURSDAY MORNING

9.00am	Departs	Kaiwaka Kaiwaka Hall
9.15am	Departs	Mangawhai Village Village Shops Bus Stop (by restrooms)
9.20am	Departs	Mangawhai Heads I-Site
9.35am	Departs	Lings Beach Corner of Wairahi and Cove Roads
9.40am	Departs	Waipu Cove Beach Car park
9.50am	Departs	Waipu Monument Bus stop
10.10am	Departs	Ruakākā Peter Snell Road (opposite Takutai Place)
10.50am	Arrives	Whangārei Rose Street Bus Terminus

AFTERNOON

3.00pm	Departs	Whangārei Rose Street Bus Terminus
3.40pm	Departs	Ruakākā Peter Snell Road (opposite Takutai Place)
4.00pm	Departs	Waipu Monument Bus stop
4.10pm	Departs	Waipu Cove Beach Car park
4.15pm	Departs	Lings Beach Corner of Wairahi and Cove Roads
4.30pm	Departs	Mangawhai Heads I-Site
4.35pm	Departs	Mangawhai Village Village Shops Bus Stop (by restrooms)
4.50pm	Arrives	Kaiwaka Kaiwaka Hall

ROUTE DETAILS

FARES	One Way	Return
Kaiwaka	\$7.00	\$10.00
Mangawhai	\$7.00	\$10.00
Mangawhai Heads	\$7.00	\$10.00
Lings Beach	\$7.00	\$10.00
Waipu Cove	\$6.00	\$8.00
Waipu	\$6.00	\$8.00
Ruakākā	\$5.00	\$7.00

OPERATED BY:

LEABOURN

PH: 0800 994 404

E: office@leabourn.co.nz

IF YOU WOULD LIKE TO BE PICKED UP ELSEWHERE ALONG THE ROUTE, PLEASE PHONE LEABOURN TO ARRANGE THIS ON THE WEDNESDAY BEFORE YOU WANT TO TRAVEL.

CITYLINK For travel within Whangārei see CityLink Whangārei timetable www.citylinkwhangarei.co.nz or get your timetable from the Rose Street office.

SUMMER BEACH BUS 2021/2022

BEACH BUS TO RUAKAKA BEACH Operating every Thursday from 23 December 2021 until 27 January 2022

FARES \$10.00 per person return trip.

11.15am	Departs	Whangārei Rose Street Bus Terminus
12.00pm	Arrives	Ruakākā Beach
2.00pm	Departs	Ruakākā Beach
2.45pm	Arrives	Whangārei Rose Street Bus Terminus

BREEM BAY

link

WITH FUNDING FROM
WAKA KOTAHĪ
NORTHLAND REGIONAL COUNCIL
AGENCYFor more info visit www.buslink.co.nz

Buslink

Northland
REGIONAL COUNCIL
Te Kaitiaki a Māori o Te Taiāwhuri

A Government subsidy on public transport has been extended to January 31 2023. The fares listed above are halved until this date

WAIPU LOTTO & POST



Lotto
Postshop
Photocopying

The Centre, Waipu

Emailing
Newsagents
All stationery needs



Phone 432 0900

TRADES & SERVICE DIRECTORY Ph 09 432 0209

Bream
Bay
Tax

Tax
Accounting
Business support

Free first consult.
Fixed price packages
Supporting Bream Bay businesses

Robb MacKinlay 027 540 7859
robb@breambaytax.nz www.breambaytax.nz



BARFOOT
THOMPSON &
PROPERTY

I Love Selling Bream Bay!

Angelique Hartnett
Coastal & Lifestyle Sales / AREINZ
0274 356 411 / 09 435 5914 P
a.hartnett@barfoot.co.nz E

WhiteWash

Low pressure house cleaning

- Pest control
- Window cleaning
- Roof cleaning
- Gutter cleaning

Murray White

027 452 2430

murray.whitewash@gmail.com

Spa & Pool chemical sales
Free water test
Valet service available



Poolside Marsden Cove

Spa pool
Displays
In store now



16 Waiwarawara Drive
Ph. 09 393 7755

Davey
Water Pumps
Sales and Service



www.poolsidemarsdencove.co.nz

TRADES & SERVICE DIRECTORY

Ph 09 432 0209

NORM FADD
OWNER / OPERATOR

Act Now
Car Rentals

M: 0274 362 480
Nz Freephone: 0800 362 480
E: info@actnowrentals.co.nz

From \$45 per day - Min 4 days
Based in Ruakākā

Ph: 09 432 0123

BREAM BAY GLASS

FOR ALL YOUR GLASS NEEDS



Mob: 0274954548

AMC
AUTO MOBILE GLASS

FAST WINDSCREEN REPLACEMENTS & CHIP REPAIRS

- Mobile service or come to our workshop
- Ultra competitive pricing. • Insurance claims welcome.
- Windscreen replacement in under an hour.

Phone Conrad on 022 036 2916
2/17 Gumdigger place.

BRADLEY
EARTHWORKS

- POND CLEANING • DRIVEWAYS • RACEWAYS
- LAND CLEARING • TREE REMOVAL • ROADING AND MORE

CALL ME TODAY FOR ALL YOUR EARTH & TREE WORKS
PHONE ROY 027 374 5090 WAIPU

ABSOLUTE CONCRETE

www.absoluteconcrete.co.nz
CULVERT PIPES
Spun and reinforced
Crane truck delivery
Drainage Merchant - Hardware Store
Email: sales@absoluteconcrete.co.nz
Phone (09) 431 2211
KAIWAKA

MACSWAY
SCAFFOLDING LTD

WE BUILD, HIRE, ALLOY MOBILES, TEMPORARY FENCING, & SHRINKWRAP

Ph: 09 432 7643 • 0274 726 772
macsway@xtra.co.nz Kapa Road, Ruakaka

O'MALLEY CONTRACTING LTD | CONCRETE SPECIALISTS

- FOUNDATIONS
- HOUSE SLABS | STAIRS
- RETAINING WALLS
- DRIVEWAYS | CARPARKS
- EXPOSED AGGREGATE
- COLOURED CONCRETE
- COMMERCIAL | RESIDENTIAL
- LICENCED BUILDING PRACTITIONER

Free No Obligation Quote

FAMILY OWNED & OPERATED

021 2200 198 | OMALLEYCONTRACTING.COM

Bream Bay Concrete Ltd.

Free Quotes • Reliable Service • Quality workmanship

- Concrete pads
- Shed floors
- Pathways
- Home floors
- Driveways
- Concrete cutting
- Excavation works
- Retaining walls
- Piling fences
- Profiles for homes & sheds
- Subfloors & boxing

Mark Royals Ph: 432 0107 Mob: 0274 433 130

BREAM BAY ELECTRICAL

BREAMBAYELECTRICAL@GMAIL.COM

MASTER ELECTRICIANS

0800 BBE 555
027 35 33 555


Ashleigh Louise
Coastal and Lifestyle Sales
Bream Bay

027 733 5703
a.louise@barfoot.co.nz

BARFOOT THOMPSON

TC & ENGINEERING
Metalwork Specialists

Stainless and Aluminium Welding and Bespoke Fabrication




Gates and outdoor furniture. Marine repairs and fabrication.
Onsite welding for farm repairs and modifications.
www.tcengineering.nz 021 145 7075 or 021 203 0309

Tractor Mulching

100hp tractor with high bodied yllais, mulcher, park finishing mowers, slashing Gorse & blackberry spraying



Also mechanical tractor repairs

Phone Bain McGregor
0274 979 013
or 09 432 0527

Grant McLean
Stock Agent for Bream Bay

Ph 021 7758 48
Email: skincarla@xtra.co.nz

All aspects of stock sales including:
• dairy beef • bobby calves • store cattle • live export heifers
• sheep • pigs • supplying stock for slaughter

Also caters for small block holders.

Carrfields **Livestock**

Ruakaka Motors

Mechanical and Auto Electrical Repairs and Servicing

mla

Monday - Friday 7.30am - 5pm
Open Saturday morning 8am - 1pm.

Tyres and Batteries
Warrant of Fitness testing
Phone 432 7233

PARADISE QUARRY

PARADISE QUARRY STONEMASONS

Specialists in stunning stone for landscape
Suppliers & installers of northland's own schist for all your stonemasonry & landscaping Requirements

(09) 432 2722 or GEOFF (021) 972 139
www.paradisequarry.com

Susan, the Painter

Phone for a free quote



Ph. 027 370 5339

BLIND PRO

Blinds • Awnings • Shutters

Indoor blinds and outdoor screens

Call us today for a free, no obligation consultation and quote

ph 09 423 9661
website www.blindpro.co.nz
email info@blindpro.co.nz

McQUINN PUMPS

How's Business? ... It's Pumping!

24/7 SALES, SERVICE & INSTALLATION | PUMPS & WATER TREATMENT
PHONE SUPPORT AVAILABLE

0800 627 846
PHONE FREE

NOW AT 72 KIOREROA ROAD
—ALONG FROM RDI & ITM

Deadline for next issue - Wednesday 23 November

TRADES & SERVICE DIRECTORY Ph 09 432 0209



DRAINAGE:

- * Septic Systems * Water Tanks * Truck & Digger Hire *
- * Subdivisions * Domestic * Commercial *
- Certifying Drainlayers

Licensed Contractor for
Waste & Drainage Work



EARTHWORKS:

- * Subdivisions *
- * Farm Work: Effluent Pond Design & Build, Dams, Races *
- * House Sites * Driveway Prep * Lawns * Roading *

P. 09 432-7877 M. 027-432-7877
E. karl@hansende.co.nz



STORAGE BREAMBAY

76 Waiwarawara Drive, Ruakaka

storagebreambay@gmail.com
021 432 701
(09) 432 77 32

www.storagebreambay.co.nz

Brian the Painter

Decorator, Restorer, Handyman
Property Maintenance

No job too small,
No travelling time charges
Free advice

Phone 0274 882371 or 09 431 4882
Email: hollis@hotmail.co.nz



LOW COST DRIVEWAYS & SURFACING NEEDS

Concrete or asphalt beyond your budget ...

We have the next best solution for a
fraction of the price.

Call for a quote, you'll be pleased you did!
Paradise Quarry Contractors

Geoff (021) 972 139 or (09) 432 2722
For contractors who 'think' ...

Long Run Roofing & Cladding

Re-roofing & Spouting
Edge Protection



Terry Mounsey

021 562 269

wetaroofting@xtra.co.nz

RELIABLE &
PROFESSIONAL SERVICE



Panelbeating and Spraypainting
Caravan and Motorhome Repairs
Tyres New and Secondhand
Punctures

470 Marsden Point Rd, Ruakaka
Call 09 4330313 24 Hrs or Bert 021 983 724

M.V.B. Electrical Ltd.

Working in Bream Bay since 1977

Repairs • Installations • Advice

Mike van Blommestein

Phone: 09 432 1015 • Mobile: 0274 783 749
Email: mikevanb@xtra.co.nz

NORTHLAND CLEANING SOLUTIONS

We have the solution for your needs



- Commercial/Domestic Cleaning
- Builders/Construction cleaning
- Carpet/Upholstery Cleaning
- Carpet Reairs/Laying
- Flood Restoration
- Property Maintenance Solutions & More.

Rochelle & Jason Brownlie

Mbl: 021 155 0319 Email: rochelle@ncsl.nz
Website www.northlandcleaningsolutions.nz

GRAEME BINT FENCING

GOOD RATES, NO JOB TOO SMALL

09 432-1599 or
027-292-2833

grbint@xtra.co.nz

MANGAWHAI SMALL ENGINES

Grasshopper, Husqvarna and Honda dealer



194 Molesworth Drive, Mangawhai
Ph: 09 431 5270 or Mb: 021 655 481
Email: msengines@xtra.co.nz

BLINDS SHUTTERS & CURTAINS

Bream Bay Whangarei & Districts

Rollers, Venetians, Verticals
Shutters, Curtains & Outdoor Blinds



Ask about our DISCOUNT for houselots

Free in-home measure & quote
Free Installation

Phone Gail 0211 95 35 35

www.blindsandshutters.co.nz

BREAM BAY ACCOMMODATION

RUAKAKA

STUDIO - HOLIDAY HOMES - B & B

BOOK ONLINE OR PHONE

Ph: 09 432 7025 Mob: 021 2722 739

website for online bookings: www.breambayaccommodation.com

WATER TANK LEAKING ??

- Most leaks fixed whilst tank is full
- Free quotes
- 35 years experience (NZ- WA- SA)
- Testimonials available
- Permanent repairs
- Drinking water approved



Ken Roberts 021 028 81751
ken@concretewaterproofing.net.nz

LAWSON CARTAGE

FOR ALL YOUR

EARTHWORKS & CARTAGE NEEDS

Suppliers of: topsoil, compost, woodchip,
bark, sand, pebble, rocks and firewood.

Ph/Fax 09 432 8418 or 021 768 940

458 Marsden Point Rd. PO Box 142, Ruakaka 0151
email: lawsoncartage@xtra.co.nz



asbestos removal

Textured Ceilings
Asbestos Fibrolite
Asbestos Lagging

Garry Smith
Mob 027 738 7888

Ph 09 432 7305
Fax 09 432 7304
email: gasbestos@xtra.co.nz
14 Bream Bay Drive,
Ruakaka, 0116

BREAM BAY NEWS PHONE 09 432 0209

Email: breambaynews@xtra.co.nz

Post copy to : Bream Bay News, RD 2, Waipu
Email: breambaynews@xtra.co.nz
or leave it at the Waipu or Ruakaka Post and Lotto Shops

FOR SALE

2023 CALENDARS

Selling fast!!!



**ONLY LIMITED NUMBERS AVAILABLE
DON'T MISS A GOOD OPPORTUNITY**

Scenic images of Bream Bay. ONLY \$10
Ideal gift, includes envelope ready for posting.
ONLY AVAILABLE AT - Ray White Real Estate
Waipu; Waipu Library, One Tree Point Store,
Westpac Bank, Ruakaka;
DON'T delay in purchasing yours
Please support our SeniorNet annual fundraiser!

SERVICES OFFERED

NORTH LAND HEADSTONES

Located in One Tree Point
Your Local Headstone Showroom
Call 0800 707 800
www.northlandheadstones.co.nz

Cut it! Chip it! Grind it!

Tree Removal

- ✓ Pruning
- ✓ Chipping
- ✓ Stump grinding

Qualified & Insured
Ph Scott (0800) 468-9663
Arborcare Tree Maintenance

Waipu Boarding Cattery

Excellent care and accommodation
Ph Sue 432 0394

GLENMOHR water care

WATER TANK CLEANING

No need to empty your tank

- Vacuum or full scrub

Phone Mark Draper
0274 707 607

PHOTOGRAPHER AVAILABLE. Waipu, Commercial, real estate, weddings, documentary, aerial, drones, events. Ph: 021 139 2553. EIGHTYTHREEPHOTO.COM

LINKING HANDS
Health Shuttle
Phone
(09) 431 8969

KNIFE AND TOOL SHARPENING ROPE SPLICING
Phone Steve
0274 786 545

LIVESTOCK FOR SALE

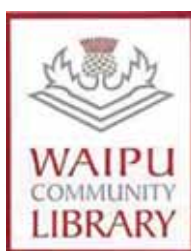
WILTSHIRE SHEEP

Ideal lifestyle block sheep. Self shedding
Ph. 027 432 1016

LIBRARY HOURS

Ruakākā Community Library

Takutai Place, Ruakaka
432 8406
Mon - Fri 9:30am-3:30pm
Sat 9am-1pm
JP Service available
Saturdays 10am - 11am.



Monday, Wednesday, Thursday, Friday & Saturday 10am - 1pm.
Tuesday 10am - 4pm.
Phone 432 0375

WATER TANKS

09 431 2211

sales@absoluteconcrete.co.nz

RAWLEIGH'S PRODUCTS Independent dealer. Ointments back in stock. Phone Susan McRae 027 227 2291.

Scooters Plywood

19mm H3 Ply \$127.00
12mm H3 NS \$79.00
Ph. 438 6565

WANTED

VEHICLES WANTED. Top cash paid For any VANS, UTES, TRUCKS, 4X4, Dead or Alive, damaged, de-registered Mechanical problem, no WOF we buy it. Call 0800 333 398

OLD NEWSPAPER Copies of the Bream Bay News, Advocate, Herald, Leader, Weekend Lifestyle, or Mangawahai Focus for recycling as erosion control. Waipu Lions fundraiser. Phone Dave Bell 09 432 0861.

SITUATIONS VACANT

CLEANER REQUIRED FOR CORONATION HALL. Approx 3 hrs per week. Days and times to suit applicant. Some extra hours required depending on bookings. Call Juanita on 027 935 9808

PERSONAL

SINGLE MALE PENSIONER 67, seeks another single male 65-75 yrs for discrete friendship/company etc. Ph 027 398 6969

FOODBANK

BREAM BAY ANGLICAN FOODBANK

If you would like assistance or know someone that does, perhaps we can help
Please phone Janet 433 0045
Or Anoek 021 141 3409

MARKETS

OTP Artisan Market

One Tree Point School field

Fundraiser for Whangarei Hospital Children's Ward
Sunday 20 November
9am to 1pm.

Spaces available call Sue 021 530 153 or 09 432 8112
Come and Support Local.

CLASSIFIED ADVERTISING

Costs \$5 for up to 20 words and 20c for each additional word.

Boxed, classified adverts cost \$15 plus gst

Phone your advert through to 432 -0209

email it to breambaynews@xtra.co.nz

Post to: Bream Bay News, RD 2 Waipu 0582 or leave it with payment at The Waipu Post Shop or the Ruakākā Gift and Lotto Shop

THE NEXT PUBLICATION DATE

of the Bream Bay News will be Thursday 1 December
The deadline for all copy is 4pm on Wednesday 23 November

JUSTICES OF THE PEACE



Justices of the Peace

Ruakākā

Paea Paki 09 432 8262/021 149 1625
Darrell Trigg 09 432 7256/021 332 901
Ken Orr 09 432 8215
JM Archibald 021 227 4355
Wayne Buckland 09 432 8226
Ext 703

One Tree Point

Jules Flight 0274 777 210
Sir John Goulter 021 612 442
MM Jolley 027 415 9486
Ian Bogue 0274 300 418

Waipu

Trevor Vaile 09 432 0400
Mr. D.A. Scott 09 929 9729
or 027229 9752
Ken Couper 027 292 0524
Angela Stolwerk 021 823 966
Jackie Fulton 09 9299200/ 0210 2567355

Make contact with a Justice of the Peace (on any day) and make an appointment to have your documents completed.

PUBLIC NOTICES

Northpower

An important notice

Road closure for pole maintenance

Northpower wishes to advise that **State Highway One, Otaika Road, Raumanga North Bound Traffic** will be closed from **Rewa Rewa Road intersection to Maunu Road intersection on Sunday 20 November 2022** between the hours of **8:30am and 4:30pm**.

Road users are requested to follow the sign posted detours whilst the closure is in operation. South Bound Traffic - **Please use alternative routes where possible, expect delays during these times.**

Northpower regrets any inconvenience caused while we carry out this necessary maintenance.

If you have any concerns, please phone **Northpower 0800 10 40 40**.

General enquiries: **0800 66 78 47**northpower.com**Bream Bay Medical Centre Ltd.****Ruakāka Town Centre, Ruakāka****Monday - Friday: 8.30am - 5pm****Saturdays: 9am - 12pm****Marsden Cove Medical Centre****1A Ngawaka Lane, One Tree Point****Monday - Friday: 8.30am - 5pm**

Please advise at time of booking
if you require an extended consultation

Ph: 432 8060

New patients welcome
Flu vaccinations available -
ring for an appointment.



**Takahiwai Rugby
League Club
AGM**

to be held Monday
5 December
at 6pm at the Club.
Applications for all
Coaching positions
must be received
in writing no later
than Wednesday
30 November.
Remits for Life
membership will
also be required to
be submitted
in writing.



Bream Bay
Community
Support Trust

Takutai Place, Ruakaka Phone 09 432 7197

SERVICES WE PROVIDE:

- Family Support – Registered Social Workers
 - Family Violence Support
 - Youth Services- Youth Workers
 - Youth Hang Out Space
 - Community Connector
(Connecting community to various services)
 - Driver Mentor Programme
- Free Ki A Ora Ngatiwai Medical Clinic
Wednesday mornings
10am-12 noon by appointment only)
Free Budgeting Service (by appointment)



There will be a working bee at the Waihoihoi Park entrance to the Waipu River Walk on Saturday 26 November. 9am start .

Please bring sturdy shoes, water, gloves, a hat, secateurs, a trowel, or other implements for weeding

WAIPU RUGBY SQUASH CLUB INC**ANNUAL GENERAL MEETING**

7pm Monday 21st November 2022

@ the Clubrooms

All Welcome



Waipu
GOLF CLUB

WAIPU GOLF CLUB INCORPORATED

NOTICE OF 88th ANNUAL GENERAL MEETING

The Annual General Meeting, to which all
members are invited to attend,
will be held at

WAIPU GOLF CLUB CLUBHOUSE
@ 7.00 PM MONDAY 28 NOVEMBER 2022

Enquiries: doug@waipugolf.co.nz**MAINLY MUSIC**

Mainly Music is on each Wednesday at 10.00am
in the Waipu Presbyterian Church Hall
All welcome

TOY LIBRARY

In the Waipu Presbyterian Church Hall.
All families and Grandparents welcome.
Wednesdays after Mainly Music 11am to 1pm.
Contact Lynnette 432 0441 & Julie 432 0388
or 021 072 6710

**BREAM BAY SUNDAY
CHURCH SERVICES**

Presbyterian Camellia Ave, Ruakaka:
8.45am. The Centre, Waipu: 10.15am.
Prayer Service: 7pm

Encounter 223 Marsden Pt. Rd,
Ruakaka, 10am.

Anglican 1st and 3rd Sundays - St Paul's
Ruakaka 2nd and 4th Sundays -
St Peter's Waipu. All services start at
9.30am.

Catholic Holy Family Church,
Ruakaka, 10.30am. Mass or Liturgy of
the Word

Lifepoint. 300 OTP Rd, 10.30am.



Harcourts Waipu



Spectacular Coastal Vista WAI2382
AUCTION (unless sold prior)
 Onsite Saturday 19th November at 2pm
 • Fabulous 2-bedroom holiday bach
 • Established 1042m2 site
 • Best view in the Cove – can never be built out
 • Glorious sea outlook from both bedrooms
 • Stroll across road – follow walkway to beach
 • Drive through garage – ideal turnaround
OPEN HOME: Sat 19th November 1.00-1.45 pm
 54 St Anne Road, Waipu Cove
 Judy Guy 027 221 5623
 Roger King 0277 555 001



A Great Family Home WAI2388
 \$860,000
 • 4-bedroom, brick-and-tile home
 • Flat and established 615m2 section
 • Double glazing and heat pump
 • Little cabin is perfect as an office
 • Shed is ideal for storage
 • 6 years young - short walk to town
OPEN HOME: Sunday 20th Nov 11:45 – 12:15 pm
 7 Riverglen Road, Waipu
 Lyndie Mullins 021 101 6389



Executive Living in Nova Scotia WAI2386
 Price by Negotiation
 • 4-bedroom, 2-bathroom impressive home
 • 782m2 site – private and borders reserve
 • Immaculately presented and stylish
 • Polished concrete floors
 • Large entertainment area with shuttered pergola and pull-down curtains
 • Double garage with attic stairs
 Roger King 0277 555 001

Harcourts Waipu | T: The Centre, Waipu | 09 432 4000
Waipu Real Estate Ltd Licensed Agent REAA 2008

Harcourts Waipu

Frazerhurst®

Curtains | Blinds | Awnings | Screens

39 years in Whangārei



Ray and Sara Wedge

Come and talk to us about your window furnishing requirements

- Free measure and quotes
- Free loan sample service
- Whangārei Showroom
- Satisfaction guaranteed



Blinds | Awnings | Shutters | Umbrellas

146 Lower Dent St. Whangārei
Ph: 09 438 3986
www.frazerhurst.co.nz



BREM BAY REALTY

BREM BAY REALTY LIMITED (LICENSED: REAA 2008)

Shop 11 | Town Centre | Ruakaka 0116 | NZ
 PH: 09 433-0300 | bbrealty.co.nz
info@bbrealty.co.nz

Proud sponsors



New Listing



BEACH JUST BEYOND
 Set on a nice corner section of 808m2 & fully fenced this 3 bedroom home is built of low maintenance materials. Open plan living opens out onto a deck area leading to the garden. The garage has been fitted out as a sleep out. Sea and sand are the talking points here within walking distance to the beach.
Price \$765,000 | [#4127](http://bbrealty.co.nz)
JOANNE DEWSON AREINZ
Mob: 021 780 622



SELECTION OF SECTIONS
 • Titles due soon.....
 • Sizes range from 704m2 up to 1093m2
 • Prices starting from \$390,000
 • Walking distance to Ruakaka shopping center and a short drive to the surf beach.
 Contact me for an information pack today.
[#4095](http://bbrealty.co.nz)
FIONA SOUTHERN MNZM
Mob: 021 317 775



WEEKENDER AT NORTHLANDS GATEWAY
 Two bedrooms PLUS rumpus or 3rd bedroom with single garage and private deck. Close to surf beach, river, racecourse & Town Centre.
 At an asking price like this, you CAN afford to have your bach close at hand. Contact me for more information.
Price Now \$549,000 | [#4112](http://bbrealty.co.nz)
FRANCIE STOKES
Mob: 022 656 0165



A FINE COASTAL LIFESTYLE
 Functional, comfortable, and well presented, a home you would be proud to call your own. With 4 bedrooms, 2 bathrooms and spacious living areas this home has family written all over it. Elevated above the Ruakaka River with indoor/outdoor flow and BBQ area off the deck.
Price \$1,095,000 | [#4123](http://bbrealty.co.nz)
JANINE GOLDSMITH AREINZ
Mob: 021 432 793



A PRIVATE SANCTUARY
 This thoughtfully laid out 3-bedroom, 2-bathroom family home has a separate lounge/media room, spacious kitchen dining living area all spilling out to a roofed patio. The home is surrounded by manicured gardens, hedging & fruit trees. A visual haven ready for a new owners.
Price \$1,085,000 | [#4109](http://bbrealty.co.nz)
JANINE GOLDSMITH AREINZ
Mob: 021 432 793



LIVE THE GOOD LIFE
 A beautifully maintained sun filled home. The well-appointed kitchen & living areas all open to the North facing patio & large Archgola with drop down blinds. The three bedroom, two bathroom home is well laid out, with significant amounts of storage space. Perfect and private.
Price by Neg | [#4104](http://bbrealty.co.nz)
JANINE GOLDSMITH AREINZ
Mob: 021 432 793