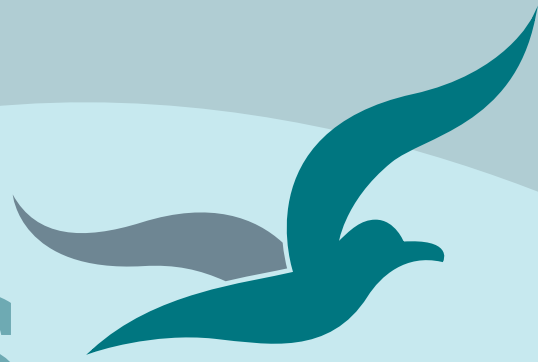


Bream Bay News



Est.1967 | Locally owned and operated | Delivered FREE twice a month 25 July 2024

Affordable Quality

- * SECURITY DOORS
- * INSECT SCREENS
- * SHOWER DOORS
- * BLINDS
- * AWNINGS
- * WARDROBE SYSTEMS

www.homeplus.co.nz



34 Albert St
Whangārei

Est. 1977

PH: 438 9452

whangarei@homeplus.co.nz

Waipu 2,000 loses Council paid mowing jobs to Christchurch based company Citycare

The Waipu 2000 and Beyond Community Trust has lost some of its paid work with the Whangārei District Council to Citycare a big Christchurch based company which tenders for construction, maintenance and management contracts throughout New Zealand.

The Waipu trust was formed in 1993 with the objective of caring for Waipu Township. For many years Waipu 2000 has received Council grants for:

mowing and maintenance of various areas including Waihoihoi Park, Insley reserve Cape Bretton Park, around the Waipu monuments and some roadside mowing, the emptying of all public rubbish bins and the removal of contents to the tip seven days per week and more regularly on public holidays and, thirdly, the clearance of drains and culverts in the town

In 2021 Waipu 2000 was asked by the Council to take over the mowing of areas in the Nova Scotia Estate and around the museum. Subsequently mowing along the Waipu River Walk and the lawn at the Waipu Fishing Club were added to the list.

Waipu 2000 Chairman Graham Boulton said the margin afforded from this additional work meant that Waipu 2000 could remain profitable, as previously the Council grants had not kept up with rising costs. He pointed out that Waipu 2000 is a charitable trust and all its profits are used for the betterment of the Waipu community.

However, early last month the trust was advised the Council was retendering its mowing work in Waipu. Knowing money was tight Waipu 2000 resubmitted a price of \$18,750 down by \$9,375 on what it had been receiving for this additional mowing. However the contract went to Citycare whose price was \$8,500.

Mr. Boulton said losing this extra mowing work means Waipu 2000 would be operating at a loss, putting at risk its ability to service the original three grant obligations.

He said the Citycare rate is hardly above the labour input price alone and it seems as though the Citycare rate is predatory pricing.

City Care Limited is a subsidiary of Christchurch City Holdings Limited. The ultimate controlling party is Christchurch City Council. In 2023 Citycare returned a profit of \$11,828,000 to the Christchurch Council.

In a press release announcing the adoption of his Councils Long Term Plan for 2024

Continued on page 3



Guaranteed to strike fear into the hearts of any marauding Barbarians, Waipu supporter Matt Hayes with Izaak Jones of the victorious Waipu Men in Kilts team, celebrating after the game at the Waipu Rugby grounds in the Caledonian Park on Saturday 20 July. The final score was Waipu 20 - Barbarians 10.
More on The Men in Kilts on page 14



Langs Beach 14a Seacrest Boulevard

600_{sqm}

Asking Price \$790,000

Christine Birss 027 235 4323 christine.birss@bayleys.co.nz
MACKYS REAL ESTATE LTD, BAYLEYS, LICENSED UNDER THE REA ACT 2008

Close to beach. Views too

Located in a desirable cul-de-sac, this site is just waiting for someone to have their own house designed for the views to headland at southeastern end of Langs Beach, and out to Bream Head.

Walk to the beach via footpath. Or else wander down the walking track in the large patch of native bush. Enjoy the canopy of native trees and maybe even pause to enjoy the birdsong.

If view & a peaceful position is important to you, then you need to come and visit this section

bayleys.co.nz/1153551

BAYLEYS

EDITORIAL

How many billion is the relevant question

I have been wading through a few official documents trying to get some solid information to pass on to you all. It's not easy. These documents always contain so much waffle and political spin.

In many sections of the Whangārei District Council's Long Term Plan there are explanations about why there can be no certainty around future expenditure as so much depends of central government policy and subsidies. How will the Coalition Government's proposed Local Water Done Well plan work? To put a local angle on this – who will be paying for the \$84 million needed to upgrade Ruakākā's wastewater treatment plant and develop a new wastewater disposal option – likely (after spending ratepayer money jumping through a few compliance hoops), to be the already consented ocean outfall? In year one work on this is to be paid for by borrowing but where future funding will come awaits central Government policy.

Its good to see the Council will putting funds towards finishing the Waipu to Waipu Cove cycle and walkway and Bream Bay Shared Path group to start work on the off road path between Marsden Cove and the Ruakākā Towncentre.

I have been searching for a figure on how much money will be going into each of these projects but this has alluded me. I have heard a figure of \$900,000 between the two projects bandied about but would like to see this in black and white. I sent a question to the Council's communication officer about this but have not had a reply as yet. One thing is clear – we will be getting a 17.2 percent general rates rise amounting to an extra \$516 pa if your rates bill was \$3,000 last year. It sounds much worse put this way that the usual "just two cups of coffee a week" terms councils like to couch rates increases in.

I have been trying to find out the time line and cost of the Brynderwyn Bypass project in The New Zealand Transport Agency document entitled "State Highway investment Proposal."

After last weekend's further slips and temporary closure over the hill the bypass seems all the more urgent. It seems like no amount of earth removal from those steep banks is going to solve this problem

In a coded timeline set out in this document "planning, design and route protection" will be carried out from 2024 to 2027. From 2027 to 2030 design will continue and construction will begin and from 2030 to 2034 design and construction will continue.

The cost will be greater than \$1billion. I think most of us could have guessed this. How many billion is surely the relevant question?

There is nothing in that document to say if the planning will pick up where it left off back in 2018 when Waka Kotahi, the NZTA having come up with two favoured options to the west. Will several suggested new options a viaduct up the southern side of the hill or a route to the east be considered or will it all be taken back to the drawing board.

Marilyn



Rick Stolwerk Coastal South Councillor for Northland Regional Council

If you have any general questions on environmental issues, pest management control, maritime safety concerns or specific questions in relation to my role as:

- Chair of the Whangarei Public Transport Working Party - NRC/WDC
- A member of the Northland Regional Council's Sub Committee - Audit, Risk and Investment
- NRC representative on the Northland Civil Defence Emergency Management Committee
- A member of the Northland Regional Council's Biodiversity & Biosecurity and the Natural Resources Working Party

Please contact me by phone or email

09 432 0741 or 021 823 770
ricks@nrc.govt.nz

This is not a Council sponsored advert.

THE BREAM BAY NEWS

is published by Bream Bay News Ltd. Address : RD 2, Waipu
Phone: 027 432 0070
E-mail: breambaynews@xtra.co.nz Website: www.breambaynews.co.nz
Editor - Marilyn Cox. Accounts - Susan McRae.
Technical assistance - Geoff Spencer
Advertising design and website maintenance - Megan Lea.
Printed by NZME

Winter & Spring deals

Here at Camp Waipu Cove, we occasionally have specials, deals, and promotions on offer to help you enjoy our place for less! Check out what we currently have available below!

Stay 2 nights - get the 3rd night FREE

Kitchen Cabins

That's right, simply stay two nights in a Kitchen Cabin, and we'll throw in a third night for free. That means you get a whole extra day of beachside bliss, on us! You can book this deal online by selecting your three preferred nights, and selecting the special Stay 3 Pay 2 price under Kitchen Cabins. It's that easy!

Kids stay FREE for school holidays

Powered & Non-Powered Sites

If you're thinking about a family camping holiday, then this deal is for you. If you book a Powered Site or Non-Powered Site during the July or October School Holidays, the kids will stay absolutely free! You can book this deal online now. Make sure to get in quick to secure your spot!

Terms and conditions apply.



People line up for bargains at the new Ruakākā Hospice Charity shop



The new Ruakākā Hospice Charity shop will be very popular if the large crowd that turned up to its official opening on Thursday morning 16 July is anything to go by.

Cars stretched all down Waiwarawara Drive and there was a long queue of people lining up with items they wanted to purchase from the new store. One woman commented that there are no other stores in Ruakākā where you can wander around and have a good look at the goods for sale.

The new store occupies a 200 square metre retail

space with an additional 100 sq. metre area where donated goods can be sorted and priced.

One hundred people have volunteered to help in the new store, which Hospice Retail Services Manager Murray Annear said he was pleased with the turnout at the opening and the level of interest in volunteering.

The new store hours are 9.30am to 4pm on Tuesday to Friday and 9.30am to 3pm on Saturday.

Hours for dropping off goods are Tuesday – Friday 8am to 3.30pm and Saturday 9am to 2pm.

Waipu 2,000 loses Council paid mowing jobs to Christchurch based company Citycare

Continued from page 1

-2034 Whangārei Mayor Vince Cocurullo said, the Council had “committed to renewals and improvement programmes that provide greater opportunities for local contractors and suppliers.”

Asked if Waipu 2,000 losing work to the Christchurch company contradicted this statement the Mayor referred the query to Louis Rattray, the Council’s Parks and Recreation Manager.

Mr. Rattray said, “We supplied both Waipu 2000 and Citycare Property maintenance maps with amendments and asked both to submit a price. Waipu 2000 were \$18,000 more expensive than Citycare Property for the same level of service and as such it was decided that Council would revert back to Citycare Property for the cost savings to ratepayers.”

Mr. Boulton said, whilst the WDC needs to look at accepting the lowest tender price, it also needs to consider the welfare and effect on the community.

He said Waipu 2000 currently has two projects underway: the creation of a community orchard, and providing family picnic tables in Waihoihoi Park. Waipu 2000 organized the Waihoihoi Park and street clean up after the 2023 Cyclone at no cost to the council. This involved over 40 large trailer and truckloads of debris.

THE NEXT PUBLICATION DATE

of the Bream Bay News will be Thursday 8 August
The deadline for all copy is 4pm on
Wednesday 31 July

Success at the World Choir Games

The Bream Bay Children’s Choir Te Korihio te Tui (the chorus of the tui) earned a bronze level 10 ranking, just one point off a silver medal at the World Choir Games held in Auckland from 10 – 20 July 2024.

Conductor Emma Couper said, “The children sang very well in a highly competitive section. In our section alone, there were choirs from Auckland, Beijing, Seoul and the United Kingdom.

The Opera North Chamber Choir, also conducted by Emma, did exceptionally well coming fourth overall

in the open section chamber choirs and earning a gold diploma level 2 which qualifies it to enter into championship rounds in future World Choir events. Emma said this means the Whangārei based choir is now recognised as being one of the top chamber choirs in the world.

She said, “What a thrilling experience! It was wonderful to see the world’s best choirs compete and sing along side our own choirs. The atmosphere was electric.”

LOCAL PEOPLE
READ THE
BREAM BAY NEWS
IT IS AN EFFECTIVE
PLACE TO ADVERTISE

Builders of Quality Family Homes



Huamanu 160sqm

\$394,000 incl gst built on your site

Includes: plans, consent, kitchen, appliances, tinted double glazed windows, tiles, carpet, blinds, heatpump.



Wayne Pickerill
Managing Director

“Hi, I’m Wayne Pickerill, Managing Director and Project Manager for your new Fowler Home. Enjoy quality and all the benefits of dealing with an efficient, low overhead, nationwide company, where I will take a personal interest and be involved through to completion.”



FOWLER
HOMES™

More designs at www.fowlerhomes.co.nz or visit our office at 63 Walton St, Whangarei. Phone Wayne Pickerill 438 4840



Cold or influenza – which is it?

A cold is caused by a virus, but is generally self-limiting and last about a week. It generally starts with a sore throat, followed by a runny nose and watery eyes, congested sinuses and cough.

Influenza (or the flu) is a more serious viral infection that comes on quite quickly and can cause serious complications such as pneumonia.

Symptom	Flu	Cold
Fever	✓	✓
Cough	✓	✓
Sore throat	✓	✓
Body aches	✓	
Headache	✓	✓
Chills	✓	
Stomach upset	✓	
Tiredness	✓	✓



If you think you have influenza see your doctor immediately because there are medicines specifically available to prevent the virus from worsening but they have to be taken within two days of the symptoms appearing.

Immunisation is the best protection
Prevention is the best medicine for influenza and you can get the influenza vaccine or 'flu jab' at some pharmacies. Talk to your pharmacist about the 'flu jab' and whether it is an option for you.

As soon as you feel unwell, talk to your pharmacist for advice. They may refer you to a doctor if needed, and there are medicines that can help reduce the symptoms of the cold and influenza.

For all your Household Needs, DIY and Gardening Supplies, Fencing Equipment, Plumbing & Electrical Fittings.

Pip and stonefruit trees now available

OPEN 7 DAYS Monday - Friday 8:00am - 5:00pm
 Saturday 8:00am - 4:00pm | Sunday 9:00am - 3:00pm
 Public Holidays 9:00am - 3:00pm

Waipu Hammer Hardware | 35 the Centre, Waipu | 09 432 0292

WAIPU LOTTO & POST

Lotto
Postshop
Photocopying

Emailing
Newsagents
All stationery needs

The Centre, Waipu Phone 432 0900

LETTERS

If the Waipu Cove Raised Platforms project was indicative of NTA performance then its dissolution is well justified

I can understand WDC's decision to reduce reliance on the Northland Transportation Alliance.
 If the Waipu Cove Raised Platforms project was indicative of their overall performance then it is well justified.
 Late meaningful engagement with the community led to missed opportunities, delays, cost escalations and unnecessary impact on a local business.
 Instead of engaging at the outset and building a plan with the community, they put a plan for construction before council that then required a whole lot of last minute scabbling around.
 Road corridor infrastructure is far too important to be left in the hands of an organisation with a silo mentality.

*Angus McCulloch
 Waipu Cove*

Gratitude to the trackies



Our walking group would like to thank all the volunteer's that work so hard on creating and maintaining these wonderful tracks for everyone to enjoy. In the photo our walking group are talking to Peter Hunt about how much we enjoyed the Wairahi stream scenic reserve. Bird life has been restored, little plank bridges crisscross the picturesque meandering stream, new tracks and steps developed and thousands of new plantings by locals have created this little pocket of treasured reserve to flourish. From what was once a waste area with every invasive weeds to a space for all to enjoy. Peter explained how this was able to happen...
 Wairahi Tracks Charitable Trust started as a Weed Action group supported by Piroa Conservation Trust. Both have web sites.
 Wairahi Tracks Trust is mainly about recreation opportunities in and around Wairahi/Langs.
 Piroa Conservation Trust is all about conservation opportunities in wider area. They go hand in hand with a number of people involved in both.

*Nora Butler
 of the Bream Bay Adventures walking group.*

LETTERS TO THE EDITOR ARE VERY WELCOME

Email them to: breambaynews@xtra.co.nz

Drop them off at the Waipū or Ruakākā Lotto shops

Or post them to: The Bream Bay News, 547 Mountfield Rd. , RD2 Waipu, Postcode 0582

Ruakākā Village Kāinga Ora development on hold and under assessment

The 50 new home redevelopment of state homes in Peter Snell Rd., Tamingi St and Tiki Place is now on hold along with many other planned Kāinga Ora projects around New Zealand.

Tenants living at the Peter Snell Rd. end of the proposed redevelopment had moved out of their homes – some into a new six home Kāinga Ora development further down Peter Snell Rd. near the racecourse, to make way for stage one of the new housing complex. Kāinga Ora staff had explained the project at Takahiwai Marae. They had attended community meetings and held open days for members of the Ruakākā community to discuss the proposal. Regional Director for Northland Jeff Murray had told the Ruakākā Resident and Ratepayers Association that it was cost effective for the housing agency to redevelop land it already held. The 50 new homes would replace 17 existing dwellings.

Plans had been drawn up and a resource consent application had been put before the Whangārei District Council.

Tui Roman, a long time resident of Tamingi St., had opposed the size and density of the development and is pleased that such an intensive development is now unlikely to proceed. She acknowledges that many more state homes are needed but thinks it would be better if these were more evenly distributed around Bream Bay, rather than all being concentrated in the Ruakākā Village.

She thinks people who need homes should be able to move into the now vacant houses at the Peter Snell Rd. end of the Kāinga Ora block.

“They are perfectly good houses. They have been insulated and they all have heat pumps.”

She said some long term tenants had been through many months of stress and worry about having to move out of their homes and needed to be heard from Kāinga Ora about the current situation

Asked about the status of the planned Ruakākā Village development, Kāinga Ora Northland Regional Director Jeff Murray sent the following statement:

“Kāinga Ora has been building new social housing in Northland at pace in line with the Government’s Public Housing Plan.

“We are committed and on track to meet the targets the plan sets, which includes all developments contracted for delivery by 30 June 2025.

“All additional social housing opportunities for the region, that are not contracted for delivery by 30 June 2025, are under assessment.

“The proposal to build 50 new social houses in Ruakākā is not contracted for delivery prior to June next year, and therefore falls into this category.

“This assessment process is to ensure best value for money and alignment with the Ministry of Housing and Urban Development’s (MHUD) priority locations.

Mr. Murray said, “As decisions are made, we will keep the community informed.”

We also asked “Has Kāinga Ora an estimate of how much all the planning and community consultation that has gone into this project so far has cost?”

This question has been forwarded to the Kāinga Ora Government Services team to process as an Official Information Request.

According to December 2023 Ministry of Social Development figures there are more than 1200 whānau waiting for a state house in Northland.

NRC Chairman - guest speaker at Waipu Residents and Ratepayers AGM

Geoff Crawford, Chairman of the Northland Regional Council, has agreed to be guest speaker at the Waipu Residents and Ratepayers AGM on 31 July at 7pm in St Peters Church in Nova Scotia Rd..

From his bio at the last local government election: Mr. Crawford began work at 17 as a weed-spraying contractor. At the age of 20 he purchased his first farm and now owns multiple farms.

He and his wife won the Ballance Farm Environment award in June 2022.

They initiated two predator free groups, hoping to eradicate pests so kiwi could return. Mr. Crawford played rugby for Northland for 11 years. He also represented NZ in spearfishing and was named twice as a Pacific champion.

He serves on multiple NRC committees and is currently involved in efforts to stop the spread of the invasive seaweed caulerpa.

He opposed NRC plans to bring in tough new rules for the management of freshwater quality, which were viewed as unworkable by many with farming interests.

The coalition government has since announced changes to the previous government’s freshwater management directives for regional councils.

He was appointed chair replacing Tui Shortland at an explosive meeting last November and has since survived a bid to have him deposed initiated by Tui Shortland in May. He has called for the councillors to put their differences aside and work together to the benefit of Northland.



Owner /Operator Duncan Mackay



GENERAL CARTAGE SERVICE
Metal / Topsoil / Sand / Manure / Hay / Silage



WATER
Prompt Delivery And Reliable Service.
Healthboard Approved Drinking Water Carrier.

Call 021 070 8211



BREAM BAY
CURTAINS
AND BLINDS

(INDOOR AND OUTDOOR)
AND SHUTTERS

PH 0204 632 432
FOR A FREE IN HOME
CONSULTATION
CALL SUE

www.breambaycurtainsandblinds.com
bbcurtainsandblinds@gmail.com

CALL SUE TODAY

0204 632 432

Northpower

Mangawhai Substation Open Day

Sunday 11 August, 10am to 3pm

Eagle Ray Road, Mangawhai (along from Bunnings & New World)

See the inside of our new substation. Speak to Northpower staff. Learn about how a substation works and what this asset means for the Mangawhai area.

Free entry
Coffee van onsite
Activities & games



BREAM BAY STORAGE
 INSIDE/OUTSIDE storage at 50 Cove Rd., Waipu
Free phone. 0800 432 135
enquiry@breambaystorage.co.nz
www.breambaystorage.co.nz

RUAKAKA SAFE STORAGE
 99 MARSDEN PT ROAD, RUAKAKA
 92 Units from 6 x 3 to 1 x 1
 Each unit individually alarmed and monitored
 Electrified security fence
Ph. 0508 273 262 or 0275 310 788
 CLEAN - DRY - SECURE

Justices of the Peace

Ruakākā	
Paea Paki	021 149 1625
Darrell Trigg	09 432 7256/021 332 901
Ken Orr	09 432 8215
Wayne Buckland	022 644 5376.
One Tree Point	
Jules Flight	0274 777 210
Sir John Goulter	021 612 442
MM Jolley	027 415 9486
Ian Bogue	0274 300 418
Grant Brown	027 248 7126
Waipu	
Trevor Vaile	021335 075
Doug Scott	027 229 9752
Ken Couper	027 292 0524
Angela Stolwerk	021 823 966
Chris Martin	027 367 2947
Mary Abercrombie	021 598467

Make contact with a Justice of the Peace (on any day) and make an appointment to have your documents completed.
 A service desk also operates 10am to 11am on Saturdays in the Ruakākā Library.

Waipu's new community orchard



Richard Wilson of Waipu 2000 and Tony Robinson planting the first trees in the new Waipu Community orchard

A community orchard is being established on a block of Whangārei District Council land in Nova Scotia Rd., alongside the Waipu Fire Station. Retired nurseryman Tony Robinson is overseeing the project, which is the initiative of the Waipu 2,000 Trust, paid for out of profits made on the Trust's mowing contracts with the Council. Mr. Robinson said he hopes the approximate 500 square metre plot will contain a wide variety of fruit trees able to supply all year round fresh produce for the

local community. He envisages that eventually vegetable gardens will also be established between the trees. The project is backed by Waipu Hammer Hardware, which sourced the trees and supplied materials including the loan of a small digger to set up the rows of garden plots. Mr. Robinson said regenerative farming techniques without the use of any toxic chemicals will be applied to the orchard.

Weight lifters are not the same as power lifters

I incorrectly referred to Starcia Antonievic and Kim Grison who recently returned from an international Olympic weight lifting competition in Australia with gold medals as power lifters, when the sport they excel in is Olympic weightlifting. The sports of powerlifting and weightlifting are not the same. Olympic style weight lifting has two disciplines: the snatch where lifters take a wide grip on the weighted

barbell and raise it over the head in a single movement and the clean and jerk - lifting the weight from the floor to the shoulders then above the head. Powerlifters practice the squat, bench press and deadlift. Powerlifting's general objective is to build strength by lifting the largest weight possible. Olympic weightlifting has a higher demand for flexibility than powerlifting relying more on training and technique.

As seen on Grand Designs 2019

COASTAL CONSTRUCTION PROJECTS
 0274 320 007
 REGISTERED MASTER BUILDER QUALIFIED TRADESMAN CARPENTERS MARCUS@CCP.NZ WWW.CCP.CO.NZ

With You every step of the way

CENTURY 21 Jean Johnson Realty
 Sales and Property Management
 Dargaville, Whangarei, Bream Bay
 W dargaville.century21.co.nz P 09 439 7575

Paraire Pirihi

2 March 1953 – 13 July 2024



Paraire Pirihi at the 2018 prizegiving at Bream Bay College with his wife Heidi and Brea Suvalko, one of his mokopuna

Deputy Principal Junie Shelford said, “The contributions of Matua Paraire and his wife Whaea Heidi to our community and Kura have been immense. His leadership within the Taumata of our Kāhui Kura has been exemplary. A proud Patuharakeke man, Matua Paraire ensured that all our tamariki within our rohe (community) had the opportunity to connect with Mana Whenua and learn their traditions, language, and stories.

For many kaiako, the privilege of working alongside Matua Paraire and Whaea Heidi was highlighted by listening to and learning about the many pūrakau (stories) of Patuharakeke. He was a strong advocate for Te Reo Māori and played a key role in establishing our Kohanga Reo, as well as the bilingual learning environments at Ruakākā Primary and Bream Bay College.

He was kind, humble, gentle yet staunch, and everyone who met him instantly recognized the mana he held. He will be forever missed by us all.

“My heartfelt thoughts go out to his wife Whaea Heidi, his tamariki, and his many mokopuna and great mokopuna. Kua hinga te Totara o Patuharakeke, moe mai te rangatira.”

Heidi, who accompanied her husband on most of these occasions backing up his korero from her wide repertoire of waiata agreed Paraire could be “quite cheeky” bringing humour to some of the ceremonies he officiated at.

Paraire had been unwell for several years after suffering a stroke while attending a hui at Marsden Point.

As well as his wife Heidi he is survived by his five children, 14 grand children and 8 great-grand children.

Paraire Pirihi, Chief of Patuharakeke, was farewelled at one of the largest tangi to be held at Takahiwai Marae last week. Despite torrential rain, over 500 people attended his funeral and there was a 200 strong haka tribute as he was carried into the urupa.

Paraire had taken on the role of Chief after returning to Takahiwai from Kawerau with his wife Heidi and two young children in the mid 1980s when he gained a job at Portland Cement and moved back to Takahiwai with his family.

Grant Pirihi, a cousin, said he had just fallen into this position.

“He was a very good speaker. He had studied the language and he was always on the paepae.”

His grand father (also Paraire) and great grandfather Henry Pirihi had both held the chief’s role but his father had spent many years living away from Takahiwai so the position skipped a generation, with an uncle Henry Pirihi as his immediate predecessor.

Grant said Paraire was well known on marae throughout the North Island

and would drive for miles to attend hui in Taranaki, the Kingitanga, in the Waikato, and around the north.

He was also known throughout Bream Bay often rising before dawn to carry out blessing ceremonies for new buildings, roads and bridges

He took a keen interest in education and had a big presence at Bream Bay College officiating at powhiri and prize-givings.



BREAM BAY ACCOMMODATION

ACCOMMODATION AVAILABLE

- Ideal for short term or workers accommodation

If you are looking for quality at affordable rates then email or call us at:
breambaycottages@xtra.co.nz
or ph 021-432701



Studio self contained



3 bedroom



3 bedroom



7 bedroom



4 bedroom

BE IN THE BOOK

To all Bream Bay residents

The Waipu Lions are re-publishing the local telephone directory. All Bream Bay residents can have their home or cellphone number in the book.

To be in the book

Contact: waipulions@gmail.com with the details:
Name, address and phone no.

Waipu pet parade



Karo and PJ Stanners took part in the parade with their Arapawa goats Penny and Amego. Karo had spent three days sewing the goat's tartan outfits which, incorporated bagpipes - made out of old recorders, sporrins and bonnets. Karo and PJ have 12 of these rare goats at their home in Warkworth and run a data base to keep track of Arapawa goats in New Zealand. Karo said the breed was brought to New Zealand by Captain Cook and there are now only around 500 left in the world, most of them in this country.



Corina Pentz with blue hair as Thing Two with son Ewan - the Cat in the hat and rescue dogs Tintin as Thing One and Oreo at the Dog in the hat. After the prize-giving Corina, Ewan and the two dogs visited Ranburn, where Corina works as an activities co-ordinator to show their outfits off to the resthome resident.



Left: Genevieve Donn with her pony Ellie were the best dressed pony and rider.



Right: Someone's got to do it: Peter Gibbs, Chairman of Promote Waipu, the organisation behind the Winter in Waipu Festival go tthe job of following behind the parade with a pooper scooper . Peter said luckily the animals were all well behaved and he didn't have to pick up any major messes.



The line of pets parading behind the pipe band stretched up the main street of Waipu at the Waipu Vet Centre's annual Pets in Tartan Parade held on Saturday morning 13 July

Anne Waight - following the trail of her great - great grandfather



Anne heading off on a 200km dog-mushing expedition

Anne Waight launched her book *True to the Trail* in the Waipu Presbyterian Church earlier this month. The book is the culmination of many years of travel and research.

It tells the story of her great - great grandfather Arthur Henry Dallimore, who joined the Klondike -Alaskan gold rush along with around 100,000 other prospectors who travelled to the Klondike region of Yukon, in northwestern Canada, between 1896 and 1899.

Arthur was born in England and emigrated to New Zealand around 1890. In 1893 news of the Klondike gold strike had reached this country and Arthur set off to seek his fortune. He remained in Alaska for 12 years and, although he did not strike gold, he found an income cutting wood to fuel the steamboats that travelled up and down the Yukon and Tanana Rivers, to service the gold camps, during the short summer season when the rivers were not frozen. He also set up a roadhouse to service the dog teams that were the only means of travel in winter. Eventually he saved enough to purchase a farm in Alberta, Canada in 1911. Throughout those 12 years in the north Arthur sent letters and photographs home to his father in England. Sometimes these were written on scraps of paper, which was all he had available and he needed to wait for an opportunity to send them by riverboat or by dog teams over hundreds of miles of ice and snow.

Arthur's father transcribed the letters and in a careful hand and saved the photographs in a journal, which was preserved for years in a leather suitcase. The journals were given to Anne in 2005.

Anne became fascinated by her great-great grandfather's adventures. She read and reread the journals, sometimes as bedtime stories to her grandson. She traced Arthur's journeys across an atlas and dreamed and planned her own adventures.

It was an exciting moment when she found Ohio Creek where Arthur had established a roadhouse named in the Atlas.

"It was tiny, and I needed a magnifying glass to see it, but it was there. For me, this was the first connection between the journals and the land where he lived and worked."



Anne ready for the 200km dog mushing trek

The journals include accounts of Arthur's interactions with other adventurers and with the native people who lived in the area.

Anne traveled to Alaska three times: in 2008, 2009 and 2010. In 2010 she took a 200 km dog-mushing expedition, retracing the old mail trail from Ester to Manley Hot Springs, the area where Arthur spent most of his time while in Alaska. A highlight was finding the remains of Arthur's wood camp and the trail he used to connect with the mail route.

In *True to the Trail* Anne's own story and her adventures are told as well as those of Arthur's and there are also comments written alongside the journal entries by Arthur's father.

Anne hopes that Arthur's experiences shed new light on the experiences of all those who came to Alaska at the time of the gold rush."

True to the Trail is available from Amazon.

Anne's family has gifted the journals and photographs to the Alaska and Polar Regions Collections and Archives (APRCA) at the Elmer Rasmussen Library, University of Alaska, and Fairbanks.

WHITTAKERS
funeral home



09 988 9049

whittakersfunerals.co.nz | admin@whittakersfunerals.co.nz
25 Kapa Road Ruakaka 0171 | PO Box 241 Ruakaka 0151

Bream Bay Garden Maintenance

Landscaping · Planting · Raised Beds
Decks · Hedges trimmed · Trees pruned
Weed control · Section Tidy Up
· Simple Building jobs·

Free Quotes

NO JOB TOO SMALL

One Offs, Weekly, Fortnightly or Monthly

Phone Marcus 021 343 727

ATLAS
QUARRIES
CONCRETE

Thinking concrete but don't know where to start?

Think Atlas Concrete

- We quarry the aggregate
- We manufacture the concrete
- We site visit to advise the best options
- We give you the choice of mix and colours
- We give a choice of local placers for you to choose
- We manufacture concrete to your requirements
- We stand by our product, you stand on it

Atlas Concrete

Your First Call for Concrete
Ph: 0800 888303 - Brynderwyn
or 432 5030 - Ruakaka



Waipu Presbyterian Parish

Contacts:
Minister - Tom Waight - 432 0534
Mainly Music - Sharon Smith - 432 1050
Toy Library - Julie Malone - 432 0388
Church Hall Hire - Cally James 432 0534
Family Welfare & Foodbank:
 Co-ordinator - Helen Matheson - 432 0239
Budgeting Advice - Bruce Matheson - 432 0239
The Crossroads Trust (financial support)
 Lyn Jones - stevolyn@gmail.com

Sunday Services
Ruakaka - Camellia Ave - 8.45am
Waipu - 50 The Centre - 10.15am

*Working with you
 - for your Community*

New tsunami sirens

There are eleven new tsunami sirens already in place or due to go up shortly around Bream Bay.

These are in Langs Bay at the corner of Wairajo Rd. and Cove Rd, alongside the Waipu Cove toilets at the Waipu Cemetery, in central Waipu opposite 69 The Centre, at the Uretiti DOC campsite, at the Ruakākā Beach car park, in the Ruakākā Village at the corner of Tamure Place and Peter Snell Rd., on the corner of Mair Rd and Port Marsden Highway, at Marsden Bay at 140 Marsden Bay Dr., in One Tree Point at the Shearwater St. Reserve and at the Takahiwai Marae.

The new sirens, purchased from Denmark are louder each covering a greater area than those they are replacing so there are fewer of them with 94 replacing 200 old sirens throughout Northland.

The sites were chosen to ensure effective sound coverage for coastal communities. Sites needed to be accessible by a truck with a crane for installation and maintenance. The sirens belong to the respective district councils, in our case the Whangārei District Council. Where possible they are located on council property. If this isn't possible, crown/central government agency land or a shared community property such as a Marae is chosen in consultation with the landowner. The sirens cannot be located on land that is privately owned to as the sirens are intended to remain in place for 20 or more years.

When activated they will give pre-programmed voice warning messages and multi tone siren sounds and have a back up solar power system so are not reliant on electricity from the grid. They can be activated via cell phone networks and satellite.

Northland's tsunami warning sirens are being upgraded

In the next few weeks new tsunami warning sirens are due to be installed in your area. These new sirens are very different from the current sirens and are going to be in new, more effective locations.

This upgrade is part of a larger project to progressively replace Northland's existing tsunami siren network. The goal is to provide more effective warnings to our coastal communities against potential tsunami threats.



The first new siren partially installed in the Whangārei port area.

For more information on the project and when and where the new sirens will be in your area

Visit www.nrc.govt.nz/sirenproject or scan the QR code below:



 SCAN ME



From the Bream Bay News files

July 1974

Ruakaka Parish Residents and Ratepayers.

The Association's A.G.M. held in the Bream Bay College library on 15th July elected the following executive committee: Chairman G. Pirihi, Secretary Mrs. B. Slako. Committee: Mesdames C. Slako, Branso, Walton and Messrs R. Batten and B. Arndt.

The subscription has been raised to \$1 per family per year and the meeting recommended that the committee work towards a door-to-door appeal for membership to strengthen the Association.

Subjects discussed included: Marsden B Environmental Impact report, Takahiwai Bridge, the bad corner at the end of Marsden Bay and the formation of the Ruakākā Beach Improvement Group.

Grant Pirihi explained the situation with the Takahiwai Bridge to the Bream Bay News this week.

It was just an old wooden bridge and the Council Engineer said the school bus couldn't drive over it saying the children would need to get out of the bus and cross the bridge on foot, with the bus driving over separately. Grant was the bus driver at the time and said this wasn't going to happen. A temporary bridge was erected while a new concrete bridge was built.




Expert skin cancer checks and treatments

As your skin cancer doctors, it is our mission to save lives by making skin cancer care affordable and accessible to all Northlanders. Our focus is on the early diagnosis and effective treatment of skin cancer in a friendly and welcoming environment.

09 438 2188 | admin@skincancerdoctors.co.nz | 11A Norfolk Street, Whangarei
www.skincancerdoctors.co.nz

Recycling scrap at Marsden Metals is good for the environment

Advertorial

Have you ever wondered what happens to your scrap metal when you drop it off to Marsden Metals or they collect it from your business or farm?

Metals are valued commodities which trade internationally and are one of New Zealand's little known export income producers. The New Zealand scrap metal industry recycles over 900,000 tonnes of metal in service of communities across NZ.

However, it is not just the sheer amount of recycled material that is



Northport recently commissioned Marsden Metals and Waste to decommission and recycle their end of life tug.

interesting; it is the environment-saving potential. Simply recycling your scrap metals and batteries can have a huge impact on the environment.

One of the core roles of the scrap metal recycling industry is enabling the consistent recycling of a vast amount of waste products. Whether they stem from a commercial site clean up, construction site, or building demolition, there are plenty of valuable materials saved from being sent to the dump by Marsden Metals and Waste.

Reusing valuable metals lowers the need for further extraction, refinement, processing, and trans-

port of precious raw materials from the earth. Without the scrap metal industry in New Zealand, those 900,000 tonnes of metal would have gone to landfill and not been reused to create new materials.

So clear out your work yard, farm or business premises today with Marsden Metals and Waste. We are proud to be Northland owned and operated offering the best service and competitive pricing for your scrap in Northland. Our highly trained team are experts in scrap and battery recycling, commercial site clear outs, and small to large demolitions

Ruakaka Stationery & Gifts

Ruakaka Town Centre
 Shop local for all your needs:
 Stationery, Books, Toys, Magazines
 Greeting Cards, Clothing,
 Gifts & Souvenirs

Phone 432 8104

Open Saturday until 7pm.

Cash paid for Scrap Metal

SKIP BIN HIRE
 NOW AVAILABLE
 PICK AND DROP OFF
 WINZ QUOTES ACCEPTED
 PH 0800 336 673

MARSDEN METALS & WASTE
 52 BEACH RD, DARGAVILLE
 53 INNOVATE ROAD, RUAKAKA

YARD OPENING HOURS
 MONDAY TO FRIDAY
 8AM TO 4.30PM
 SATURDAY 8AM TO 12PM




Another milestone in Perlita and Bob's banana love story

MARSDEN POINT HIGH TIDES				
	AM		PM	
Thu 25 July	10.23	2.7	10.51	2.8
Fri 26 July	11.14	2.7	11.41	2.8
Sat 27 July	~	~	12.06	2.6
Sun 28 July	12.32	2.7	1.02	2.6
Mon 29 July	1.25	2.6	2.00	2.5
Tue 30 July	2.21	2.5	3.02	2.5
Wed 31 July	3.20	2.5	4.05	2.5
Thu 1 August	4.21	2.4	5.06	2.5
Fri 2 August	5.21	2.4	6.03	2.5
Sat 3 August	6.19	2.4	6.54	2.6
Sun 4 August	7.11	2.4	7.42	2.6
Mon 5 August	7.59	2.6	8.25	2.6
Tue 6 August	8.43	2.5	9.05	2.6
Wed 7 August	9.24	2.5	9.43	2.6
Thu 8 August	10.03	2.4	10.20	2.6
Fri 9 August	10.41	2.4	10.56	2.5

MAINLY MUSIC
 Mainly Music is on each Wednesday at 10.00am in the Waipu Presbyterian Church Hall. All welcome. Contact Sharon Smith 027 551 1514


TOY LIBRARY
 In the Waipu Presbyterian Church Hall. All families and Grandparents welcome. Wednesdays after Mainly Music 11am to 1pm. Contact Lynnette 432 0441 & Julie 432 0388 or 021 072 6710



Bream Bay Community Patrol

Working with the Police to reduce crime in the Bream Bay area.

To inquire about joining, contact Senior Constable Martin Geddes Waipu Police Station – 432 4030



THE NEXT PUBLICATION DATE
 of the Bream Bay News will be Thursday 8 August
 The deadline for all copy is 4pm on Wednesday 31 July



Bob and Perlita with four of their grandchildren at the Ranburn party

Perlita and Bob Smith celebrated another milestone when family and friends gathered at the Ranburn Resthome on Friday morning 19 July for their 39th wedding anniversary. Perlita refers to their relationship and marriage as her “banana love affair” as it all began with a note she wrote on the lining of a box of bananas at the Del Monte banana-packing plant where she worked in the Philippines. She invited whoever found the note to become her pen pal. Bob came across it while unpacking bananas at his dairy in Otaika in Whangārei. He decided to reply and

soon the letters between them were flowing thick and fast. They were married in Davao in the Philippines in July 1985. Perlita came to live with Bob in One Tree Point and to help in the Otaika Store. They had a daughter Janine and son Chris both who have married and live in Waipu and have children of their own, four of whom came along to the Ranburn party. The eldest grandchild Quinn Murray couldn't attend as he had injured his ankle and was at the White Cross medical centre at the time. Bob also has two daughters and another four



Bob and Perlita on their wedding day in Davao in the Philippines in July 1985.

grandchildren from an earlier marriage. Two granddaughters Peyton and Kyah Murray are champion highland dancers and performed for the residents and guests, while Mila and Nixon Smith joined in with the singing and ukulele music provided by the Lifepoint Church ukulele band. Bob now lives at Ranburn with Perlita visiting most days. He still has the piece of thick brown paper with Perlita's invitation from all those years ago.

Waipu's national Highland Dancing champion



Eleven-year-old Peyton Murray of Waipu is a New Zealand Highland Dancing champion after winning her 7 – 12 years age group section at the New Zealand Championship competition hosted by the Highland Dancing Association of Taranaki over Matariki weekend at the end of June.

Peyton's younger sister seven-year-old Kyah also did well in her age group winning the first day of competition and coming runner up on the second.

Both Kyah and Peyton, along with two other dancers from Mark Forshaw's Lothian dance studio, will travel to Gosford, New South Wales, to compete at the International Championship of Australia early next month.

Art'n Tartan winner to feature at costume and fabric symposium

Carole Hebbard's winning Art'n'Tartan design, Hope and Deliverance, currently on display at the entrance to the Waipu Museum has been requested as a feature exhibit for the National and UK of the Costume and Textile Association Symposium held for the first time in Whangarei at Forum North.

The symposium runs from Friday 30 August to Sunday 1 September 2024 from 8.30 to 5pm. Tickets for a three-day pass are available on Eventfinda.



THE MAINTENANCE

www.themaintenance.co.nz

- ❖ Chemical and non-chemical house washing
- ❖ Window and house cleaning
- ❖ Painting and staining – exterior house, decking and fences
- ❖ Water blasting - decks, driveways and courtyards
- ❖ Clean guttering and downpipes
- ❖ Pest control and spider spraying
- ❖ Tree trimming with extension saw

Phone now for a FREE QUOTE

REVITALISE ❖ PRESERVE ❖ PROLONG ❖ MAINTAIN

TONY 021 196 2949 OR MELISA 021 075 6770



Marsden Yacht and Boat Club Inc.

PO Box 9, Ruakaka, 0151
E:mail: secretary.mybc@gmail.com
50th Anniversary News Release June 2024

“We Are 50”

Marsden Yacht and Boat Club will be celebrating its 50th Birthday at the Clubhouse on Sunday, 27 October, 2024 (Labour Weekend).
The programme will include sailing, a “Happy Hour” and a dinner.

We welcome all members, ex-members plus their families join us to celebrate our achievements and the milestones from the past.

Our beginnings were modest – progressing from sailing off the beach at Marsden Point (where Northport now exists) to our present status – a well-established Club at One Tree Point with our own Clubhouse and fleet of rescue and sailing dinghy craft.

Join us to celebrate our achievements and to reminisce about our past history – the Races won (and lost), the Tutukaka Race Ups and Downs, the cruising stories, etc., etc. Remember past members and the happy social occasions.

Please pass the news of this upcoming event to any members of your family who once sailed with the Club.

We would appreciate any photos, etc., that would be of interest

To register your interest please contact the Club via either:
e:mail to: secretary.mybc@gmail.com, postal to PO Box 9, Ruakaka, 0151, or by phone/text to Warren Daniel Cell 0275327268/ Home (09) 4327268.

Love being active?

24/7 gym

- no lock in contract,
- no admin, no joining fee
- \$10 per week
- Ladies only gym
- Unisex gym
- Casual gym \$2 per day

**9 Takutai Place
Ruakaka
Ph: 432 7962**

Opening hours :
Mon, Tues, Wed, Fri
8am to 2pm
Thur 8am to 6pm

Come and join us at the
Ruakaka Recreation Centre

Lounge available for hire - up to 134people
Meeting room for hire - up to 15 people
For events kitchen facility available

Very reasonable rates

Activities at the Ruakaka Recreation Centre			
Activity	Day and Time	Cost	Contact
Fit for life Ruakaka class	Monday 10am to 11am	\$5	AnnMarie 0211693115
Fit for life Ruakaka class	Wednesday 11am to 12pm	\$5	AnnMarie 0211693115
Stretch and Tumble	Tuesday 10.30am to 11.30 am		Fran breambaygym@gmail.com
fun rec gymnastics classes	Tuesday 2pm to 6pm		Fran breambaygym@gmail.com
Yoga	Thursday 6pm to 7pm	\$20 per session	Facebook: Shantishalayoga
Yoga	Friday 8am to 9am	\$20 per session	Facebook: Shantishalayoga
Zumba Gold	Tuesday 9 am to 10 am	\$7	Roz rozhum ba@gmail.com
Zumba Gold	Thursday 9am to 10am	\$7	Roz rozhum ba@gmail.com
Stretching classes	Thursdays 11am to 12pm	\$5	Lu 4328941
60's up	4th Friday of month 10am to 4pm	\$12 annually fee	Joy 021491887
petanque or indoor bowling	Wednesday 1pm to 4pm		Sue 021850286
Music club	1st Monday of month 7pm to 10pm	\$5	Fulco 0274718428
Zumba	Monday 8.45am to 9.45am	\$8	Janine 021437840
Zumba	Wednesday 5.45pm to 6.45pm	\$8	Janine 021437840
Zumba	Friday 4.45pm to 5.45pm	\$8	Janine 021437840
casual gym	Monday to Friday 8am to 2pm, Thursdays to 6pm	\$2 per day	Christine 4327962
casual Squash	Monday to Friday 8am to 1pm	\$5 per hour	Christine 4327962

We are also home to Bream Bay Squash club and Bream Bay United Association Football club



Plant some trees to celebrate winter

We have a collection of beautiful native plants supplied by the Northland Regional Council and from our BBCC nursery .
Come and help us get them planted



At the Ruakaka Dune Lake
See the banner flag at the end of Tamure Rd.
On Saturday 10 August
From 9am to 11am

Then morning tea supplied

Organised by the Bream Bay Coastal Care Trust

Men in Kilts versus the Barbarians



The Men in Kilts put up a strong defence agians the Barrbaians attack

It was victory all the way to the Men in Kilts in the games played first against Manaia and then the New Zealand Barbarians in a wet and muddy Caledonian Park on Saturday 20 July.

The game against Manaia went 25 to 5 to the kilts while the score in the game against the Barbarians finished at 20 to 10 again to the Men in Kilts.

Two brave women joined the fray for the Barbarians men in Kilts big game: Regina Scheck for the Barbarians and Waipu senior coach Sue Dawson for the Men in Kilts. Both are former Black Ferns.

A big puddle that formed at the far end of the field after heavy rain that morning and the previous night saw some spectacular sprays of water when tackled players fell into it.

At the after match celebrations in the Waipu Rugby clubhouse the Barbarians were able to regain some pride by winning the haggis and whisky team challenge while the Waipu Rugby Club raised approximately \$2,500 by raffling, various items of memorabilia including a signed Barbarians rugby jersey.

The question on the minds of those of us watching from the sidelines though was who is going to launder all those muddy kilts.

The task fell to Lyn Jones, wife of Men in Kilts games organizer Steve.

The kilts needed to be hosed down, soaked and washed and on Monday were arranged around the Jones's lounge to dry.



After the big match the kilts spread out to dry in the Jones'lounge. The woollen kilts have lasted with a few repairs for the 12 years the Men in Kilts event has been held

EVERY THURSDAY

BREAM BAY Link

MORNING		
9.00am	Departs	Kaiwaka Kaiwaka Hall
9.15am	Departs	Mangawhai Village Village Shops Bus Stop (by restrooms)
9.20am	Departs	Mangawhai Heads I-Site
9.35am	Departs	Langs Beach Corner of Wairahi and Cove Roads
9.40am	Departs	Waipu Cove Beach Car park
9.50am	Departs	Waipu Monument Bus stop
10.10am	Departs	Ruakākā Peter Snell Road (opposite Takutai Place)
10.50am	Arrives	Whangārei Rose Street Bus Terminus

*For travel within Whangārei see CityLink Whangārei timetable
www.citylinkwhangarei.co.nz
or get your timetable from the Rose Street office.

AFTERNOON		
3.00pm	Departs	Whangārei Rose Street Bus Terminus
3.40pm	Departs	Ruakākā Peter Snell Road (opposite Takutai Place)
4.00pm	Departs	Waipu Monument Bus stop
4.10pm	Departs	Waipu Cove Beach Car park
4.15pm	Departs	Langs Beach Corner of Wairahi and Cove Roads
4.30pm	Departs	Mangawhai Heads I-Site
4.35pm	Departs	Mangawhai Village Village Shops Bus Stop (by restrooms)
4.50pm	Arrives	Kaiwaka Kaiwaka Hall

OPERATED BY: **LEABOURN**

Ph: 0800 994 404
E: office@leabourn.co.nz

FARES	One Way	Return
Kaiwaka	\$7.00	\$10.00
Mangawhai	\$7.00	\$10.00
Mangawhai Heads	\$7.00	\$10.00
Langs Beach	\$7.00	\$10.00
Waipu Cove	\$6.00	\$8.00
Waipu	\$6.00	\$8.00
Ruakākā	\$5.00	\$7.00

ROUTE DESCRIPTION
Kaiwaka/Mangawhai Road, Molesworth Road, Mangawhai Heads Road, Cove Road, The Centre Waipu, Nova Scotia Drive, SH1, Marsden Point Road, Peter Snell Road, Marsden Point Road, SH15A, SH1, Otaika Road, Maunu Road, Walton Street, Rose Street Bus Terminal.

If you would like to be picked up elsewhere along the route, please phone Leabourn's to arrange this on the Wednesday before you want to travel.

CONTRACTED TO:
Northland REGIONAL COUNCIL
Te Kaitiaki o Te Tai Tokerau

For service updates visit:
www.buslink.co.nz
Feedback to buslink@nrc.govt.nz

How to best appreciate a glass of whisky



Wes and Bob Bycroft of Celtic band Twisty Willow entertaining at the Waipu Scottish Migration Museum's whisky tasting evening another event on the Waipu Winter Festival calendar

As a part of the Winter Festival in Waipu, a whisky tasting was organised by the Waipu Scottish Migration Museum and held at the old School in the Heritage Precinct.

Friday 5 July was eagerly anticipated by the 30 people who arrived to find tables set up with four different whiskies on a small printed tray naming each whisky.

David Picketts, the owner of Waipu Liquor opened the evening holding a claymore (sword). He introduced Oscar Lods from Hancock's Wine, Spirits and Beer Merchants who was whisky aficionado for the evening.

Oscar began by describing how to breathe in the whisky with one's mouth open to gain full benefit from the experience. Swirling the whisky in the glass releases the alcohol while a little warming of the amber liquid releases the flavours.

Each whisky was introduced by Oscar in turn with a short description of the distillery's location and history. Between each tasting water cleansed the palate and cheese and crackers prepared for the next round. Each person made their own assessment of each whisky and views were exchanged on which was more popular at each table.

Further providing a Scottish flavour was Twisty Willow, the well-known Waipu duo and the evening closed with a supper of tea, coffee, savouries and cakes.

WHAT'S ON IN BREAM BAY

- **COMMUNITY CONNECTIONS** 10:30am-12 noon every Friday in the hall at the Bream Bay Community Trust in Takutai Place, Ruakākāā. Light refreshments available.
- **ONE TREE POINT ARTISAN MARKET** Next on Sunday 21 July 9am - 1pm. One Tree Point School quadrant and field. Fundraising for Whangārei Hospital Children's Ward.
- **BREAM BAY UNITED FOOTBALL CLUB** 50th anniversary dinner. 27 July from 6pm in the Waipu Celtic Barn. Ph Hayden 021 266 4884
- **WAIPU COVE SURF LIFESAVING CLUB MID WINTER SWIM**, Sunday 28 July 12 noon at the club. .
- **COMMUNITY PUBLIC BINGO** Last Wednesday in each month Waipu Citizens and Services Club . Club open to public Calling starts 7.30 pm Restaurant open 5.30 pm All Welcome. Next on Wednesday 31 July
- **BIG D BBQ QUIZ NIGHT** Friday 2 August at the Marsden Yacht and Boat Clubhouse. Doors Open 5.30pm. Dine at 7.00pm. Self help dinner and quiz night.
- **STARS IN YOUR EYES WAIPU**. Show dates 2 and 3 August. Tickets from www.trybooking.com/nz or from Harcourts Real Estate office in the Waipu Centre.
- **WAIPU BOUTIQUE SUNDAY MARKET** Next on Sunday 11 August From 9am to 1pm in the Coronation Hall
- **ABBA TRIBUTE** Waipu Citizens and Services Club. Saturday 31 August 7.30pm . Tickets from the club.
- **MEGAN JOHNSTON** Saturday 17 August at 7pm at the Waipu Citizens and Services Club. Tickets \$40 from C&S Club includes dinner and dessert. Raffles, music dancing, best dressed prizes.
- **POP QUIZ AT THE RAZZA** Fundraiser for Bream Bay College Year 8 camp. Wed 21 August 6.30pm. Teams of 6. \$15pp. To book phone/text 021 782 662 or email razzakitchen@hotmail.co.nz
- **WAIPU MUSEUM** 36, The Centre, Waipu. Open seven days 10am- 4pm
- **THE KAURI MUSEUM**. . The Kauri Museum is open 9am-5pm every day except Christmas Day. 5 Church St., Matakōhe. See more at www.kaurimuseum.com

Phone the **BREAM BAY NEWS 09 432 0209**
 or email: breambaynews@xtra.co.nz
 if you know of something interesting
 going on in Bream Bay.

TRADES & SERVICE DIRECTORY

FENCING SPECIALISTS
 CALL CHRIS HICKEY ON 027 561 1719
 email: fencingspecialists.nz@gmail.com

ALL ASPECTS OF FARM & LIFESTYLE BLOCK FENCING & MAINTENANCE INCLUDING:

- Post & Batten • Entrances
- Post & Rail • Retaining Walls
- Stock Yards • Riparian Lots
- Netting • Subdivision

BREAM BAY ACCOMMODATION

RUAKAKA

STUDIO - HOLIDAY HOMES - B&B

BOOK ONLINE OR PHONE

Ph: 09 432 7025 Mob: 021 2722 739
 website for online bookings: www.breambayaccommodation.com

GREG STEWART
 Qualified Builder...License # 106626

Over 45 years experience
 Prompt Service

Ph 021 317 555
 Email gpstewart56@gmail.com

SMALL ALTERATIONS..
 DECKING..FENCING
 BUILDING REPAIRS..HANDYMAN

NO JOB TOO SMALL GIVE ME A CALL

Deadline for next issue - Wednesday 31 July

TRADES & SERVICE DIRECTORY

NORM FAGG
OWNER / OPERATOR

Act Now
Car Rentals

M: 0274 362 480
Nz Freephone: 0800 362 480
E: info@actnowrentals.co.nz

From \$45 per day - Min 4 days
Based in Ruakākā

Ph: 09 432 0123

BREAM BAY GLASS
FOR ALL YOUR GLASS NEEDS



Mob: 0274954548

AMG
AUTO MOBILE GLASS

FAST WINDSCREEN REPLACEMENTS & CHIP REPAIRS

- Mobile service or come to our workshop
- Ultra competitive pricing. • Insurance claims welcome.
- Windscreen replacement in under an hour.

Phone Conrad on 022 036 2916
2/17 Gumdigger place.

BRADLEY
EARTHWORKS

- POND CLEANING • DRIVEWAYS • RACEWAYS
- LAND CLEARING • TREE REMOVAL • ROADING AND MORE!

CALL ME TODAY FOR ALL YOUR EARTH & TREE WORKS
PHONE ROY 027 374 5090 WAIPU

ABSOLUTE CONCRETE

www.absoluteconcrete.co.nz
CULVERT PIPES
Spun and reinforced
Crane truck delivery
Drainage Merchant - Hardware Store
Email: sales@absoluteconcrete.co.nz
Phone (09) 431 2211
KAIWAKA

MACSWAY
SCAFFOLDING LTD

WE BUILD, HIRE, ALLOY MOBILES, TEMPORARY FENCING, & SHRINKWRAP

Ph: 09 432 7643 • 0274 726 772
macsway@xtra.co.nz Kapa Road, Ruakaka

O'MALLEY CONTRACTING LTD | CONCRETE SPECIALISTS

- FOUNDATIONS
- HOUSE SLABS | STAIRS
- RETAINING WALLS
- DRIVEWAYS | CARPARKS
- EXPOSED AGGREGATE
- COLOURED CONCRETE
- COMMERCIAL | RESIDENTIAL
- LICENCED BULDING PRACTITIONER

Free No Obligation Quote

FAMILY OWNED & OPERATED

021 2200 198 | OMALLEYCONTRACTING.COM

Bream Bay Concrete Ltd.
Free Quotes • Reliable Service • Quality workmanship

- Concrete pads
- Shed floors
- Pathways
- Home floors
- Driveways
- Concrete cutting
- Excavation works
- Retaining walls
- Paling fences
- Profiles for homes & sheds
- Subfloors & boxing

Mark Royals Ph: 432 0107 Mob: 0274 433 130

BREAM BAY ELECTRICAL

Wiring Safe Homes And Businesses Throughout Northland

RESIDENTIAL COMMERCIAL INDUSTRIAL

0800 223 555 027 35 33 555
www.breambayelectrical.co.nz

This Space
Now available
\$42.80 gst inclusive
or for regular customers
(six or more insertions)
\$38.50 gst inclusive

TC & ENGINEERING
Metalwork Specialists

Stainless and Aluminium Welding and Bespoke Fabrication



Gates and outdoor furniture. Marine repairs and fabrication.
Onsite welding for farm repairs and modifications.
www.tcengineering.nz 021 145 7075 or 021 203 0309

Tractor Mulching

100hp tractor with high bodied yffails, mulcher, park finishing mowers, slashing Gorse & blackberry spraying

Also mechanical tractor repairs

Phone Bain McGregor
0274 979 013
or 09 432 0527



Grant McLean
Stock Agent for Bream Bay

Ph 021 7758 48
Email: skincarla@xtra.co.nz

All aspects of stock sales including:
• dairy beef • bobby calves • store cattle • live export heifers
• sheep • pigs • supplying stock for slaughter

Also caters for small block holders.

Carrfields Livestock

Ruakaka Motors
Mechanical and Auto Electrical Repairs and Servicing

Monday - Friday 7.30am - 5pm
Tyres and Batteries
WOF testing Gold Card discount
Drop off, pick up service available in Waipu
Phone 432 7233

PARADISE QUARRY

PARADISE QUARRY STONEMASONS
Specialists in stunning stone for landscape
Suppliers & installers of northland's own schist for all your stonemasonry & landscaping Requirements

(09) 432 2722 or GEOFF (021) 972 139
www.paradisequarry.com

SUSAN JACOBS PAINTING
INTERIOR • EXTERIOR
027 370 5339

BLIND PRO

Blinds • Awnings • Shutters

Indoor blinds and outdoor screens

Call us today for a free, no obligation consultation and quote

ph 09 423 9661
website www.blindpro.co.nz
email info@blindpro.co.nz

McQUINN PUMPS
How's Business? ... It's Pumping!

24/7 SALES, SERVICE & INSTALLATION | PUMPS & WATER TREATMENT
PHONE SUPPORT AVAILABLE

0800 627 846
PHONE FREE

NOW AT 72 KIOREROA ROAD
—ALONG FROM RD1 & ITM

Deadline for next issue - Wednesday 31 July

TRADES & SERVICE DIRECTORY



HANSEN
Drainage & Earthworks

DRAINAGE:
* Septic Systems * Water Tanks * Truck & Digger Hire *
* Subdivisions * Domestic * Commercial *
Certifying Drainlayers

*Licensed Contractor for
Waste & Drainage Work*



EARTHWORKS:
* Subdivisions *
* Farm Work: Effluent Pond Design & Build, Dams, Races *
* House Sites * Driveway Prep * Lawns * Roading *

P. 09 432-7877 M. 027-432-7877
E. karl@hansende.co.nz



Team James Alexander

JAMES ALEXANDER **ASHLEIGH LOUISE**
021 878 178 027 733 5703
SALESPERSON & AUCTIONEER SALES ASSOCIATE

Licensed Salesperson, The Real Estate Shop Limited, Licensed (REAA 2008)

Local people read
THE BREAM BAY NEWS
It is an effective
place to advertise



WORTHY AG

SMALL BLOCK MULCHING

Phone COLIN (Joe) 0274916983

LAWSON
CARTAGE

FOR ALL YOUR
EARTHWORKS & CARTAGE NEEDS
*Suppliers of: topsoil, compost, woodchip,
bark, sand, pebble, rocks and firewood.*

Ph/Fax 09 432 8418 or 021 768 940
458 Marsden Point Rd. PO Box 142, Ruakaka 0151
email: lawsoncartage@xtra.co.nz



Long Run Roofing & Cladding
Re-roofing & Spouting
Edge Protection

Terry Mounsey
021 562 269
wetaroofing@xtra.co.nz

**RELIABLE &
PROFESSIONAL SERVICE**



**STORAGE
BREAM BAY**
76 Waiwarawara Dr, Ruakaka 0171

Karen Loft
Business Manager
Mob: 021 432 701

Office Hours 9.00 - 1.00
email: storagebreambay@gmail.com
www.storagebreambay.co.nz

**LOW COST DRIVEWAYS &
SURFACING NEEDS**
Concrete or asphalt beyond your budget ...
We have the next best solution for a
fraction of the price.
Call for a quote, you'll be pleased you did!
Paradise Quarry Contractors
Geoff (021) 972 139 or (09) 432 2722
For contractors who 'think' ...

**YOUR MONEY
BLUEPRINT**

**WAIPU BASED
FINANCIAL PLANNER**

- Investment planning
- Retirement planning
- General financial planning

Name - Nick Carr
Phone - 022 504 7612

Email - ncarr@yourmoneyblueprint.co.nz
Website - www.yourmoneyblueprint.co.nz



**MPP
MARSDEN
PANEL & PAINT**

Panelbeating and Spraypainting
Caravan and Motorhome Repairs
Tyres New and Secondhand
Punctures

470 Marsden Point Rd, Ruakaka
Call 09 4330313 24 Hrs or Bert 021 983 724

M.V.B. Electrical Ltd.
Working in Bream Bay since 1977
Repairs • Installations • Advice
Mike van Blommestein
Phone: 09 432 1015 • Mobile: 0274 783 749
Email: mikevanb@xtra.co.nz



**BARFOOT
THOMPSON &
CO.**

I Love Selling Bream Bay!

Angelique Hartnett
Coastal & Lifestyle Sales / AREINZ
0274 356 411 / 09 435 5914 P
a.hartnett@barfoot.co.nz E

**GRAEME BINT
FENCING**

GOOD RATES, NO JOB TOO SMALL
09 432-1599 or
027-292-2833
----- grbint@xtra.co.nz -----

MANGAWHAI SMALL ENGINES
Grasshopper, Husqvarna and Honda dealer



194 Molesworth Drive, Mangawhai
Ph: 09 431 5270 or Mb: 021 655 481
Email: msengines@xtra.co.nz

Bream Bay Tax

Tax Accounting Business support

Free first consult.
Fixed price packages
Supporting Bream Bay businesses

Robb MacKinlay 027 540 7859
robb@breambaytax.nz www.breambaytax.nz

BREAM BAY HYDRAULICS

Bream Bay's first local hydraulic hose service



021 308 358 breambayengineering@gmail.com

FOR SALE

HAY. CONVENTIONAL BALES AND BALAGE.
Top quality Phone 027 432 0351.

2004 X 5.60M X RAMCO "Outsider" with 2016 x 90HP Mercury 4 stroke engine. Fitted with "fold down canopy" and side "clears" for added comfort, this older runabout comes with a capstan, chart plotter, depth sounder and Solerama VHS radio, underfloor tank (70l) with in line fuel filter, nav lights and electric bilge pump, removable bait board and transom ladder.

Motor has only done 200 hours (Oct 2016) and fitted with "Bigfoot" gearbox and high torque propeller has been serviced on schedule with 'non return helm' for easy steering. Very economical and cruises comfortably and easily at 35 kph.

All mounted on a "Voyager" roll on/off trailer, fitted with loading stays, led trailer lights and spare tyre, registered and WOF ready.

Offers for this package around \$32,000 considered.

Please ph Dave – 027-5122-311 to enquire further or to view. Boat is at One Tree Point.

ECHO CHAINSAW - CS5100 with 450mm bar – just serviced. Powerful unit for winter firewood. \$495.00. Also **BLACK & DECKER 1850W ELECTRIC BLOWER** with cord – 230V - strong airflow and as new unit - \$100.00. Please call Dave – 027-5122-311 to enquire and view

WILTSHIRE SHEEP
Ideal lifestyle block sheep
Self Shedding
Ph 027 432 1016

WORMS FOR SALE
For worm farms
Phone or text
027 432 0070

RAWLEIGH'S PRODUCTS
Independent dealer. Ointments back in stock. Phone Susan McRae 027 227 2291.

WATER TANKS
09 431 2211
sales@absoluteconcrete.co.nz

Scooters Plywood
3mtr Scaffold Planks \$77
12mm H3.2 NS Plywood \$79.00
Ph 438 6565

EMPLOYMENT

WANTED - Someone to take care of CLASSIC VEHICLE COLLECTION - if you're good with electrics EVEN BETTER, but good old school mechanics and common sense. Great working conditions, P/T or Full time or hrs to suit you. Ph Dave 021947710 or 09 432 0011 anytime

FOR HIRE

SHIPPING CONTAINERS
20ft Shipping Containers, hire offsite \$180 per month + GST + Del, minimum 3 months,
Ph 0212722739 / 021432701

SERVICES OFFERED


Waipu Boarding Cattery
Excellent care and accommodation
Ph Sue 432 0394

NORTHLAND HEADSTONES

Located in One Tree Point
Your Local Headstone Showroom
Call 0800 707 800
www.northlandheadstones.co.nz



Tree Removal
✓ Pruning
✓ Chipping
✓ Stump grinding
Qualified & Insured
Ph Scott (0800) 468-9663
Arborcare Tree Maintenance



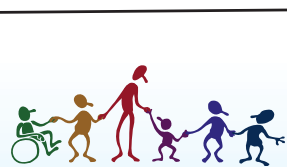
GLENMOIR water care
WATER TANK CLEANING
No need to empty your tank
• Vacuum or full scrub
Phone Mark Draper 0274 707 607

JD LAWN CARE SERVICES

Lawn mowing, Weed spraying, Water blasting, surface cleaning of driveways, paths and patios, Hedge trimming, Section clearing, tree pruning, wood chipping and more.

PH. 021 063 7907

SOCIAL SERVICES



LINKING HANDS
Health Shuttle
Phone
(09) 431 8969

BREAM BAY ANGLICAN FOODBANK
If you would like assistance or know someone that does, perhaps we can help
Please phone Janet 433 0045

SOCIAL SERVICES



Safeman Safe family Men's Centre

Safeman Safefamily offers a safe place for men to talk privately without judgement and with complete confidentiality.

We are peer led and professionally supported and offer a range of services and support for men and their families.

The services we provide are as follows:

- Advocacy Navigator
- Court support
- FGC Support
- Probation Community Service Provider
- Legal Advice
- Marriage Celebrant
- House and property blessing
- One to one counselling
- Drug and Alcohol support
- Anger management group sessions
- Supervisor for court ordered access
- Work brokers/ help with employment opportunities.

No appointments are necessary, we have an open door policeu - if you need help or know someone that does just come on down to: **9 Takutai Place, Ruakākā**. We are right next door to Jimmy's Barber Shop or I can be reached by phone 021 121 0763 - Phil Paikea

Bream Bay Community Support Trust



Takutai Place, Ruakaka Phone: 09 432 7197

Services we provide:

- Registered Social Workers
 - Family Support Workers
 - Youth Workers
 - Youth Holiday Programme
 - Counsellors
 - Community Connectors (Connecting community to various services)
 - Free Whanau Ora Medical Clinic with Ki A Ora Ngatiwai. Wednesday mornings 10am-12noon, by appointment only phone 09 435 4586
 - Free Budgeting Service –fortnighly on Thursdays 10am-1pm, by appointment
 - Mana Wahine Ki Wahine Toa & Ha Tane groups
 - Community Gardens behind our main building please help yourself
 - Pataka Kai/ Food Pantry located outside our reception door.
- Follow us on social media - Facebook and Instagram for updates on what is happening here during the week.

www.bbtrust.org.nz

WANTED

OLD NEWSPAPER Copies of the Bream Bay News, Advocate, Herald, Leader, Weekend Lifestyler, or Mangawhai Focus for recycling as erosion control. Waipu Lions fundraiser. Phone Dave Bell 09 432 0861.

VEHICLES WANTED. Top cash paid For any VANS, UTES, TRUCKS, 4X4, Dead or Alive, damaged, de-registered Mechanical problem, no WOF we buy it. Call 0800 333 398



Not sure? Ask us!


We provide free, confidential and independent information and advice to help you understand your rights and responsibilities.

Contact us for assistance.
09 438 8046 • whangarei@cab.org.nz

www.cab.org.nz

PUBLIC NOTICES

www.promotewaipu.co.nz



AGM
Waipu Business & Community Incorporated
K/A Promote Waipu
Our AGM will be held on

Sunday 18th August 2024 at 3.00pm
At the Waipu Croquet Club,
 Caledonian Park, Waipu

Our community are warmly invited, light refreshments will be provided.

For further information and apologies please contact.
 Penny Reynders secretary@promotewaipu.co.nz

BREAM BAY SPORTS TRUST AGM
 Monday 12 August at 5.30pm
 In the Waipu Boat and Fishing Club
 Nova Scotia Rd., Waipu

Waipu Highland Pipe Band AGM
 Date: 4th August 2024
 Time: 2.30pm
 Location: Celtic Barn Foyer, Waipu

Local people read THE BREAM BAY NEWS
It is an effective place to advertise



Bream Bay Medical Centre Ltd.
Ruakākā Town Centre, Ruakākā

Monday - Friday: 8.45 am - 5pm
Saturdays: 9am - 12pm



Marsden Cove Medical Centre
1A Ngawaka Lane, One Tree Point

Monday - Friday: 8.45am - 5pm
 Please advise at time of booking if you require an extended consultation

Due to staff illness numbers - We need you to wear a mask If you have flu like symptoms please. If unable to wear a mask and have flu like symptoms please ring us from your car and let us know you have arrived.

Ph: 432 8060
New patients welcome

BREAM BAY COASTAL CARE AGM
 On Sunday July 28th at 2.00 pm.
 In the Ruakākā Recreation Centre
 There will be a showing of a video on the importance of estuaries with an introduction by Laura Shaft, Chairwoman of the Coastal Restoration Trust NZ
 Afternoon tea to follow

WAIPU RIDING RESIDENTS AND RATEPAYERS ASSOCIATION ANNUAL GENERAL MEETING
 Wednesday 31 July at 7pm

GUEST SPEAKER GEOFF CRAWFORD CHAIRMAN OF THE NORTHLAND REGIONAL COUNCIL

St Peters Church, Nova Scotia Rd., Waipu
 All Welcome



MARSDEN COVE FISHING CLUB AGM
 Sunday 4th August 2024 @ 2:30pm
 at the Fishing Club Rauiri Drive Marsden Cove
 RSVP to marsdencovefishingclub@gmail.com
 or 021 148 2479
 by Friday 26th July



Ruakaka Surf Lifesaving Patrol AGM

Saturday 10 August 2024
5.30pm Meeting

RSVP to
 ruakakasurfpatrol@gmail.com
 Nominations and expressions of interest to
 ruakakasurfpatrol@gmail.com
 By 5pm 24th July 2024

Ruakaka Surf Club
 Ruakaka Beach Road, Ruakaka

BREAM BAY SUNDAY CHURCH SERVICES

Presbyterian Camellia Ave, Ruakaka: 8.45am. The Centre, Waipu: 10.15am. Prayer Service: 7pm

Encounter 223 Marsden Pt. Rd, Ruakaka, 10am.

Anglican - ST PAUL'S Church, 25 Karawai St, Ruakaka 1st and 3rd Sundays 9.30am
 ST. PETER'S CHURCH, 8 Nova Scotia Dr., Waipu 2nd and 4th Sundays, 09.30am

Catholic Holy Family Church, Ruakaka, 10.30am. Mass or Liturgy of the Word

Lifepoint. 300 OTP Rd, 10.30am.

CLASSIFIED ADVERTISING

Costs \$5.50 for up to 20 words and 20c for each additional word.
 Boxed, classified adverts cost \$16.50 gst .inc.
 Phone your advert through to 027452 0070
 email it to breambaynews@xtra.co.nz
 Post to: Bream Bay News, RD 2 Waipu 0582
 or leave it with payment at The Waipu Post Shop or the Ruakākā Gift and Lotto Shop



SENIORNET BREAM BAY IS OFFERING THESE COURSES/WORKSHOPS NEXT TERM:

Gmail, W11 Basics, Intro to Basic Computing, Creating Labels online, Creating gifts online, Photos off devices, Digital Greeting Cards, Android phone, One Drive, Google Calendar, You Tube, Facebook, Basic Apple iPhone/iPad, Advanced Apple iPhone/iPad, Apple Photos plus, Coffee & Tech & Camera Group
 To register, phone 4327692 (leave a message) or email – seniornetbb@gmail.com

MARKETS



OTP ARTISAN MARKET
Next on 18 August
 Fundraiser for Whangarei Hospital Children's Ward
 Spaces Available Phone 021 530 153

THE NEXT PUBLICATION DATE
 of the Bream Bay News will be Thursday 8 August
 The deadline for all copy is 4pm on Wednesday 31 July

TEAM MCKENZIE

WIN an escape in luxury to Tahiti



YOUR NEXT CHAPTER. YOUR NEXT ESCAPE.

Have your property appraised before 20 September 2024 and go in the draw to win a luxury escape to beautiful Tahiti.*



Sandy McKenzie
+64 21 431 541
sandy.mckenzie@nzsir.com

Yana Bell
+64 21 0807 9342
yana.bell@nzsir.com

New Zealand
Sotheby's
INTERNATIONAL REALTY

* Terms and conditions apply. View at nzsothebysrealty.com/escapeinluxury/profile/280
Each Office Is Independently Owned and Operated. NZSIR North Limited (licensed under the REAA 2008) MREINZ.

YOUR TRUST OUR PEOPLE



Harcourts Waipu

Waipu Village – Potential to Subdivide WAI2626
Price by Negotiation



- First time on the market for 42 years
- Character, spacious 3 bedrm bungalow
- Situated on a generous 2223 m2 section
- Mature trees, vege garden, chook run
- Sleep-out, 2 x studios and single garage
- Option to continue fully operational cattery
- Short walk to Waipu Primary School & shops

Judy Guy 027 221 5623

Stylish Lifestyle on the Edge of Town WAI2578
\$1,250,000



- Attractive 3-bedrm, 2-bathrm brick home
- Well-established, expansive 2430m2 site
- Bonus separate double garage/workshop and guest quarters
- Fantastic indoor/outdoor flow to covered areas
- Fujitsu home heating system & 20 solar panels
- Rural feel but close enough to walk to village

Roger King 0277 555 001

Rural Vibe – Walk to the Village WAI2663
\$549,000



- 2000m2 section, amongst quality homes
- Picturesque site, 900m from Waipu village
- Peaceful and lovely rural outlook
- Flat contour makes for an easy build
- Attractive sub-division
- Blank canvas ready for your creativity
- 5-minute drive to Waipu Cove

Lyndie Mullins 021 101 6389

Harcourts Waipu | 7 The Centre, Waipu | 09 432 4000
Waipu Real Estate Ltd Licensed Agent REAA 2008

Harcourts Waipu




BREM BAY REALTY

BREM BAY REALTY LIMITED (LICENSED: REAA 2008)

Shop 11 | Town Centre | Ruakaka 0116 | NZ
PH: 09 433-0300 | bbrealty.co.nz
info@bbrealty.co.nz

Proud sponsors
SPCA
WHANGAREI

<p>New Listing!</p> 	<p>LOOKING FOR A PROJECT? How many times do we get asked for a do-up, well here it is. This Sunshine Cabin with its detached Versatile Garage might well fit the brief. Easy care fully fenced & gated section with a designated council reserve adjacent, perfect for kids & dogs alike. Great location, so close to Ruakaka amenities. Price \$545,000 bbrealty.co.nz #4198 JANINE GOLDSMITH AREINZ Mob: 021 432 793</p>	<p style="color: red; font-weight: bold; font-size: 1.2em;">Price Reduced!</p>  <p>OPEN HOME—SUNDAY 2.00—2.45pm 1/45 Cartwright Road, Onerahi</p>	<p>LOCALITY WITH WARMTH A short drive to the Onerahi shops and amenities. Warm and comfortable brick home with 3-bedrooms and 2-bathrooms, Clean and tidy with conservatory plus approx. 3m x 3m extra shade area on a roomy deck designed to catch all day sun - great entertainment spot! Price Now \$649,000 bbrealty.co.nz #4194 FRANCIE STOKES Mob: 022 656 0165</p>
	<p>VACANT POSSESSION Ideal first home or lock up and leave Beach Bach. With open plan living, kitchen & dining, family and friends can spill out onto the covered deck and pull down the blinds for privacy and wind factor if necessary. Walk to the beach. Price \$650,000 bbrealty.co.nz #4165 JANINE GOLDSMITH AREINZ Mob: 021 432 793</p>	 <p>OPEN HOME—SUNDAY 11.45am—12.15pm 5 Kowi Lakes Drive, One Tree Point</p>	<p>EXCEPTIONAL HOME IN OTP Perfect for families, retirees or holiday home buyers. Boasting 3 generous bedrooms, 2 well-appointed bathrooms, and a double garage, it offers ample space for comfortable living. A former show home, this property has been finished to a high standard and features many extras. By Negotiation bbrealty.co.nz #4156 FIONA SOUTHRN MNZM Mob: 021 317 775</p>
	<p>INVEST IN ONE OF THE BEST One of the best sections available in The Landing subdivision. Amongst established quality homes this fully fenced site is awaiting plans for your future. Elevated with views of Whangarei Heads, a flat 628m2 with power and water on site. Offers Over \$339,000 bbrealty.co.nz #4190 JOANNE DEWSON AREINZ Mob: 021 780 622</p>	 <p style="text-align: center; background-color: white; padding: 5px; color: red; font-weight: bold;">Encouraging Offers</p>	<p>NO COVENANTS—BUILD OR RELOCATE Tucked away off the road is this new section, close to Ruakaka Town Centre and a short drive to the beach. Sections with no covenants are very rare, get in now!! 515m2 (480m2 nett). NEW TITLE—170B Marsden Point Road. Price \$350,000 Negotiable bbrealty.co.nz #4168 FIONA SOUTHRN MNZM Mob: 021 317 775</p>