

Bream Bay News

Established 1967. Delivered FREE twice monthly

Phone 432 0209. email breambaynews@xtra.co.nz
Mobile 027432 0070 Postal address - RD 2, Waipu 0582
Website: www.breambaynews.co.nz LOCALLY OWNED AND OPERATED

26 July 2018

Affordable Quality

- * SECURITY DOORS
 - * INSECT SCREENS
 - * SHOWER DOORS
 - * BLINDS
 - * AWNINGS
 - * WARDROBE SYSTEMS
- Regular Bream Bay Service



PH: 438 9452
34 Albert St Whangarei
Div. Shadelite Industry

Refinery consents granted with tightened set of conditions

The Marsden Point oil refinery operator, Refining New Zealand has been given the consents it sought to deepen and realign the entrance to Whangarei Harbour to accommodate fully laden new generation Suezmax tankers but with a tightening of some of the proposed conditions.

The panel of three commissioners Sharon McGarry (chair), Dr. Rob Lieffering and Sheena Tepania heard the company's applications on behalf of the Northland Regional Council (NRC) over seven days during late February and March this year. They three decided that all 13 of the resource consents sought should be granted, most of these for a 35-year period.

However, in their 140 page long decision they have made what an NRC press release describes as "significant changes" to the consent conditions. These include: a closed season for dredging between 1 October and 31 January and that the consent holder should take all practicable steps to find a land based use for the dredged material.

There are also requirements for increased monitoring of turbidity and effects on seabed plants and animals around the dredge site.

Refining NZ will be required to make an initial payment of \$150,000 a year and subsequent payments payments of \$50,000 a year for ten years to a kaitiaki group made up of representatives of the five tangata whenua groups: Patuharakeke, Te Parawhau, Ngati Kahu o Torongare, Te Waiariki, Ngati Korora, Ngati Tu, Te Uriroi and Ngatiwai. The payments are intended to enable the kaitiaki group to assess the effects of both the initial and subsequent maintenance dredging.

There will also be a Poupouwhenua Fund of ten annual payments of \$50,000 each to be used for environmental enhancement projects in Whangarei Harbour. This fund will be overseen by the Patuharakeke representative on the kaitiaki group.

Another condition is that Refining NZ set up a website setting out all the project's resource consents where members of the public can make comments and forward complaints.

Commenting on the decision Julianne Chetham, of the Patuharakeke Trust Board, said, "Obviously we are disappointed as we sought for the application to be de-

Continued on page 3.

Art 'n Tartan Supreme Award winner

Photo by Peter Grant



The winner of the Supreme Award at this year's Art 'n Tartan wearable art show was Carol Hebbard with her creation entitled *Me and My Shadow*. And under all those butterflies and white face paint - our very own Robert Spriggs.



Langs Beach 4 Kingswood Place

3 2 2

For Sale \$1,600,000
Christine Birss 027 235 4323 christine.birss@bayleys.co.nz
MACKYS REAL ESTATE LTD, BAYLEYS,
LICENSED UNDER THE REA ACT 2008

Beach views. Stylish. Functional.

This modern beach pad shows clearly the architects talent and desire to achieve a very functional property with all the ambience of 'baches of old'.

Keeping a simple focus on great indoor/outdoor flow, the main living area interacts well and spills out onto the sheltered patio areas, with the kitchen across the rear of the living area - cleverly designed to look out to the sea views.

Built in 2106; The current owner loves this property, but is now engaged to be married and so is sadly saying good-bye.

It's time for another family to create their memories here.
Memories that are worth making.

bayleys.co.nz/1150866

BAYLEYS

This Issue

- Page 4 ...Letters
- Page 5 ..The Bream Bay College Ball
- Page 6...Police Report
- Page 7....The inaugural Waipu Everyday Hero Awards
- Page 12.. Young couple take over the Waipu butcher shop.
- Page 13...Waipu Rugby supporters at Toll Stadium
- Page 14.....What's On in Bream Bay?
- Page 14... Ruakaka Primary School children cook up a feast using vegetables and fruit from the school garden.
- Pages 15, 16 and17 ...Trades and Services
- Pages 18 & 19 ...Classified advertising

Roller blinds, Venetians

Vertical blinds, Patio blinds

Wooden Shutters, Awnings

Blinds 'n' Screens

For a free measure & quote
Phone Darren Green
0210 220 1433
Insect & Security Screens



99 MARSDEN PT ROAD, RUAKAKA
92 Units from 6 x 3 to 1 x 1
Each unit individually alarmed and monitored
Electrified security fence
Ph. 0508 273 262 or 0275 310 788
CLEAN - DRY - SECURE

EDITORIAL

With some hard work and commitment maybe Ruakaka will once again be an accurate name for this whenua

There have been a lot of visitors to Waipu of late. I went to the opening night of the Art'n Tartan show and the Celtic Barn was packed full of people, most of whom I did not recognize. All the out-of-towners I spoke to were highly impressed by the show, which was full of surprises: kapa haka, bagpipes, a troupe of beautiful, highly accomplished dancers, a glow in the dark story book, a hula hoopist performing astonishing feats with his fluorescent rings and some truly stunning wearable art creations.

Its incredible how much creative talent there is around here. On Wednesday night I went to the inaugural Waipu Cycle and Walkway night trail. That was a wonderful event with the potential to become another great Waipu fixture. Along the trail there was a cardio drumming station (anyone feeling the chill of that cloudless, star lit evening was invited to pick up some drum sticks and join in) the Waipu Primary ukulele group, a wicked stepmother with a poisoned apple and at the end of the line - fire juggling by Achmed and his Circool Circus troupe and Steve the coffee man inviting brave children to step up and take hold of a fiery torch.

If the endless winter rain, the mud, the damp, the cold is getting you down have a look at the Bream Bay News What's On guide and get out to one of these events.

I had a phone call this morning from Robert Webb, who told me about a different kind of visitor to the town: three kaka spotted last week near Waipu Primary and this morning (Sunday, 22 July) they were around the Presbyterian Church.

Robert said in the 70 years he has lived in Northland this is the first time he has seen a kaka on the mainland.

Several successful breeding seasons for kaka on off-shore pest free islands are apparently what are bringing them here in the winter when food on the islands is in short supply. If we want to encourage them we should be planting native trees that produce flowers and berries in the winter or early spring. I know they love the nectar of kowhai and flax flowers.

If we want kaka to live here all year round we need to get rid of the pests in our forests such as wild cats, stoats, rats and possums. Kaka make their nests in hollows in high trees. Females incubate the eggs while being fed by their male partners. The chicks leave the nest before they can fly and spend several weeks on the ground practicing. During all this time (around three months) both the chicks and their mothers are vulnerable to predation.

On a recent visit to Wellington it was thrilling to see lots of kaka flying high between the tall trees in that city's Botanic Gardens. These are from the nearby Zealandia wild life park where a predator free fence protects their breeding sites.

So all power to the Waipu trapping group, which has trap lines in the Brynderwyn Waipu Cove area and to a new initiative in Takahiwai to rid the forest there of pest species.

It's going to take a lot of commitment and hard work but maybe Ruakaka will once again be an accurate name for this whenua.

Marilyn



INSIDE/OUTSIDE storage at 50 Cove Rd., Waipu

Free phone. 0800 432 135
ralph@breambaystorage.co.nz
www.breambaystorage.co.nz

THE BREAM BAY NEWS

is published by Bream Bay News Ltd.
Address : RD 2, Waipu
Phone : (09) 432 0209
Mobile : 027 432 0070
Editor : Marilyn Cox
Accounts : Susan McRae
Production : Geoff Spencer
Advertising design :and website maintenance
Megan Lea

WEED CONTROL
CROP
GUN / GORSE
PASTURE SPRAYING
LAWN WEED CONTROL

BEN
M 021 762 727
P 09 432 0012





Aaron Toddun & Associates Ltd
CHARTERED ACCOUNTANTS



• Farm and business accounts • Income tax • GST • PAYE
• FBT • Budgets • Cashflow forecasts • Company formations
• Dealer MYOB Accounting Software

For a professional and confidential service and a free initial consultation call your local Mangawhai Accountant or drop in at our new office, 1 Awatea Street Mangawhai Heads.
Aaron Toddun B/Com Dip/ComLaw

1 Awatea Street, Mangawhai Heads, 0505
Phone/Fax : (09) 431 4881 Mobile: 027 611 0616
Email: aaron@aarontoddun.co.nz
www.aarontoddun.co.nz

Tackling the problem of wild pigs at Takahiwai

A Takahiwai landowners group has been formed to tackle the problem of wild pigs, which have been coming out of the bush to dig up farmland.

An initial meeting was called earlier this month with Kane Mc Elrea, the NRC’s biosecurity manager partnerships and strategy in attendance. Mr. McElrea told the group the NRC is willing to offer assistance to community groups who are willing to put effort into pest control.

As the Department of Conservation and the Whangarei District Council also own land in the Takahiwai Forest he said these organisations would be expected to make some contributions as well.

Patrick Hilton said his property was being used as a highway by wild pigs. He was already employing a hunter to try to control them. He suggested his property would be a good place for the eradication programme to begin.

Julianne Chetham said her major concern was kauri dieback. She wondered if the Takahiwai Forest, which does not have this disease, could become a sanctuary for kauri. A big advantage is that there are no public tracks through it. Pigs however can be a vector for the disease . She was concerned that pig hunters take hygiene measures, such as cleaning their equipment with methylated spirits before entering the forest.

Mr. McElrea agreed saying, “The last thing we need is a hunter bringing the disease from the back of Waipu to this forest.”

He said if the NRC is paying pig hunters they would need to undergo both health and safety training and training in hygiene protocols to prevent the spread of kauri dieback.

He also said some monitoring of how effective the eradication programme was would be needed and the NRC could train a local person to do this.

Luana Pirihi asked if long term it would be possible to reintroduce kiwi to the forest.

Mr. McElrea said this could happen within five years if a comprehensive pest control programme was carried out.

Mr. Hilton said he already trapped possums and was also interested in weed control.

Dr. Mere Kepa said it was important to get started right away on the pig control. She said she had seen pigs dig up around half an acre of land in a single night. “What we are worried about is our land.”

The Waipu Cycle and Walkway night trail



Rico Keepa, rugged up nice and warm and ready to travel the night trail, with a glow stick clutched in his hand.



Six-year-old Ashley Ward won a prize for his decorated bike at the Waipu Cycle and Walkway night trail event held on Wednesday evening 18 July.

Refinery consents granted with tightened set of conditions *Continued from page 1.*

clined in its entirety. We believe that some of the potential adverse effects are unable to be mitigated. However, we think the decision includes a very comprehensive analysis and gains have been made in terms of ensuring more robust baseline monitoring is undertaken prior to works commencing and the conditions with regard to receiving water quality standards and the dredging timetable are far more stringent. It will take some time for us to carefully traverse the decision in detail, and we will not be making any decision on whether or not to appeal until we have been able to do that.”

Dr. Barry Pyle of One Tree Point, who also opposed the application, said he had yet to read the 145 page consent document in its entirety but felt that the hearing process had been a good one in that the concerns of objectors had been listened to.

He noted the tightening of conditions around the

monitoring of seawater turbidity, the time limit on dredging activity and the requirement that a land use for the dredge material be investigated.

He thinks the RNZ application was premature and more work should have been undertaken beforehand.

Dr. Pyle said some of the raised areas of seabed in the area to be excavated could be composed of ironstone and he cannot see how these will be dredged.

Refining NZ posted a statement on the NZX – New Zealand Stock Exchange website last week saying the company “welcomes the decision by the hearings panel appointed by the Northland Regional Council to grant resource consents for the Company’s dredging project.

“We are currently reviewing the detailed consent conditions proposed by the panel and may have more to say once this process has been completed.”

NEW LISTING

Boundary lines are indicative only

One Tree Point 29 Stace Hopper Drive

For Sale \$695,000

Phone for viewing times

Melva Hartnell 027 499 8463 melva.hartnell@bayleys.co.nz

MACKYS REAL ESTATE LTD, BAYLEYS,
LICENSED UNDER THE REA ACT 2008

Waterfront paradise

This magnificent lifestyle opportunity is situated in the heart of a Northland boating paradise. Marsden Cove is situated near the entrance to Whangarei harbour, allowing fast and easy access to Bream Bay and world class boating and fishing grounds beyond. Close to schools, boat ramps, sports fields, shopping and medical facilities and a 30 minute drive in to Whangarei City. An easy walk to beaches and cafe's. This prime 698sqm flat site is absolute water front. A leading Auckland Architect has already prepared concept plans for the development of the site. This site is being sold with a brand new shared 9m pontoon, capable of mooring a vessel up to 18 metres long. A simply superb destination to invest in and build a family, retirement or holiday home. Swim off the end of your section or stroll down the pontoon and on to your pleasure craft for that special day out! An astute investment.

bayleys.co.nz/1301073

BIG RED

TRUCKING

Call 021 070 8211

Owner /Operator Duncan Mackay



GENERAL CARTAGE SERVICE

Metal / Topsoil / Sand / Manure / Hay / Silage



WATER

Prompt Delivery And Reliable Service.

Healthboard Approved Drinking Water Carrier.



Thinking concrete but don't know where to start?

Think Atlas Concrete

- We quarry the aggregate
- We manufacture the concrete
- We site visit to advise the best options
- We give you the choice of mix and colours
- We give a choice of local placers for you to choose
- We manufacture concrete to your requirements
- We stand by our product, you stand on it

Atlas Concrete

Your First Call for Concrete

**Ph: 0800 888303 - Brynderwyn
or 432 5030 - Ruakaka**

LETTERS

Proud of you Bream Bay College

I'm responding to your words about the recent Bream Bay College Stage Quest participation. My daughter was part of the crew and I am very proud of her and the whole production, especially for raising awareness about suicide.

For too long mental health has had a stigma attached to it. Young people nowadays are more aware and keen to address these issues. Older generations failed to deal with these issues. I've heard many older people talk about the #MeToo campaign saying that in 'their day' sexual harassment (as its now known), was the norm. Sorry, but it was never okay and I'm proud that our young people stand up for these important issues.

Depression and anxiety and other mental health issues can lead to suicide. Ignoring it does not help. Too many young people in our community are contemplating or attempting suicide. Far too many kids know friends and fellow students or family members that are suffering mental health issues.

If the Bream Bay College entry into Stage Quest raises awareness and saves even one life then it will have been worth it. Please stop hiding behind the issues and be proud that our young people care and are willing to try and make a difference. Proud of you Bream Bay College.

*Stuart McDonald
One Tree Point*

Not a nourishing, quality vegetarian product

My farming colleagues and I are delighted that Whangarei District Council's excellent GE/GMO plan change (banning any release of GMOs and putting in place strict liability provisions for any EPA approved outdoor GE experiment) recently became operative. Well done WDC and FNDC and everyone who made submissions supporting this great initiative!

Both councils wisely undertook a fiscally responsible, collaborative GE/GMO plan change a couple of years ago, in order to protect ratepayers and the environment from the risks of outdoor use of GMOs. This was necessary given serious deficiencies in the Hazardous Substances and New Organisms (HSNO) Act, including inadequate liability provisions and no mandatory

requirement for the EPA to take a precautionary approach to outdoor use of GMOs.

However, as a consumer I was not impressed to learn of AIR NZ's recent ill-advised decision to serve (on flights from LA to Auckland) a controversial new synthetic, low-quality food that has not even been approved by the US Food and Drug Administration as safe to eat.

We're talking about the so-called "Impossible Burger". This is not (putting to one side the calculated, misleading hype), a nourishing, quality vegetarian product produced in a sustainable way.

This is a genetically engineered, fake American product of highly dubious origin whose disgusting ingredients include: water, protein powders, glues, factory flavourings, flavour enhancers, synthetic vitamins- all clear indicators of low-grade, ultra-processed food- and soy leghemoglobin (SLH).

A little research reveals that SLH is a vat-grown, genetically engineered form of the heme iron found in the root nodules of soybean plants that has no proven track record of safety.

We're told that SLH gives the fake meat a "bloody" meat-like taste and flavour. Yeah right. Even the (normally lax) US Food and Drug Administration's stated position on the "Impossible Burger" is:

"FDA believes that the arguments presented, individually and collectively, do not establish the safety of SLH for consumption, nor do they point to a general recognition of safety."* The FDA also noted that soybeans are one of the most common allergenic foods.

Good on NZ First MP Mark Patterson and National's Agriculture Spokesman Nathan Guy for giving Air NZ a good bollocking about the disgusting fake burger. They're right- any meat served on Air NZ flights should come from our high quality, beautiful grass-fed beef and lamb (supporting the NZ "Taste Pure Nature" brand). A high quality vegetarian patty (from a NZ company like Bean Supreme or Sunfed Meats) should be provided as an alternative, not an imported unsafe GE product.

"Disappointing to see Air NZ promoting a GE substitute meat burger on its flights to the USA. We produce the most delicious steaks and lamb on the planet - GMO and hormone free. The national carrier should be pushing our premium products and helping sell NZ to the world" - Nathan Guy on Twitter

Get your act together AIR NZ and pull the "Impossible Burger".

*Linda Grammer
Whangarei*

LETTERS TO THE EDITOR ARE VERY WELCOME

Email them to: breambaynews@xtra.co.nz,

Drop them off at the Waipu or Ruakaka Lotto shops

Or post them to: The Bream Bay News, 547 Mountfield Rd., RD2 Waipu, 0582

WAIPU LOTTO & POST



Lotto
Postshop
Photocopying

Emailing
Newsagents
All stationery needs



The Centre, Waipu

Phone 432 0900

WENDY HINES BABY MASSAGE COURSES



021 432 891

Newborn to pre-crawling

5 week Infant Massage Course

Starting first week in September in both Mangawhai and Waipu

Cost is \$100 for the 5 weeks, prebooking your place is required

Check out times & venue on my Facebook page

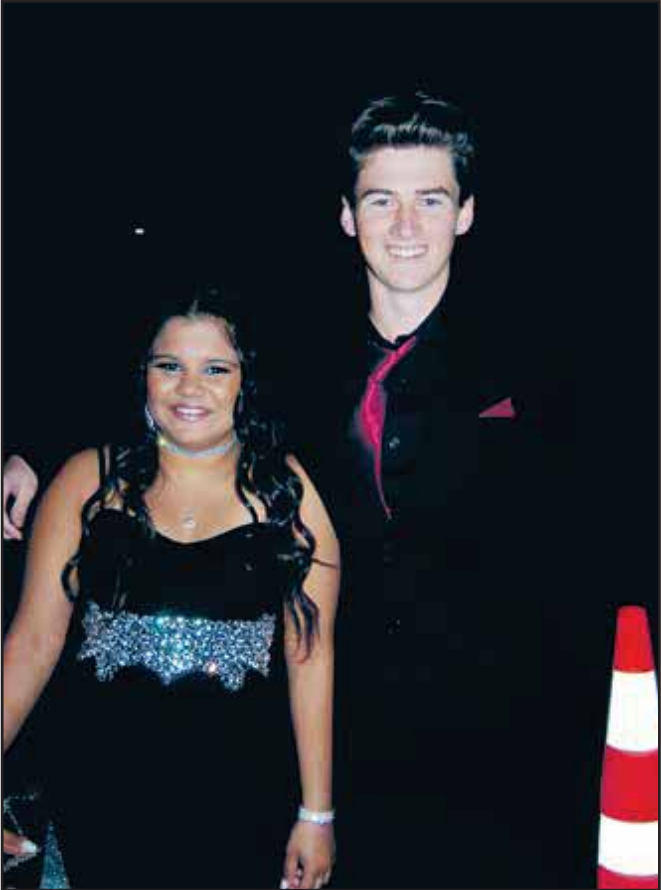
(Fb logo) Twinkletoes Baby Massage



The Bream Bay College Ball



If there was a prize for the best arrival at the Bream Bay College ball, held on Thursday evening 19 July, it may have gone to Shenae Doak Smith and Richie Levita who turned up with full fanfare in a Traffic Management Services truck



Mazmin Ali and Josh Lansdown



Where did he get that suit? Seth Faoagali and Senara Wickramasinghe arriving at the ball.

- All aspects of Drainage and Earthworks
- Commercial and Residential
- Retaining and Foundation works
- Earthworks - house cuts - farm and race - drilling

Certified Drainlayer
LBP Builder

almondcontractors.co.nz
Contact- info@almondcontractors.co.nz
021 134 4993

Camp Waipu Cove

We have a new multi purpose sports surface completed and now ready for use by locals and campers
Call into our reception to pick up a key.
Use of the court is free but we do require a \$25 bond

Phone 432 0410
869 Cove Rd., Waipu

Previously Bream Bay Design & Print Ltd

PRINTNZ member
our industry, our people

QUALITY COMMERCIAL PRINTERS

BUSINESS STATIONERY • PROMOTIONAL GIFTS • CARBONLESS BOOK SPECIALISTS

DRINKWARE

PENS

CARBONLESS BOOKS

HEADWARE

BROCHURES & STATIONERY

BAGS

1 Kapa Rd, P O Box 182, Ruakaka 0151

0800 432 898 | 09 432 8998

marsdenprint@xtra.co.nz

www.breambayprint.co.nz

MONTHLY DROP IN SESSIONS

with
Northland Regional Council
Coastal South Councillor - Rick Stolwerk



Monday September 3

Just to let you know that I have had to
postpone my August sessions.

9.00 - 10.00am **Maungatapere - The Office Cafe**
10.30 - 11.30am **Ruakaka - WDC Offices**
12.00 - 1.00pm **Waipu - Deli Cafe**
1.30 - 2.30pm **Kaiwaka - Kaiwaka Hall entrance**
3.00 - 4.00pm **Mangawhai - Mangawhai Museum**

Phone 021 823 770
Email: ricks@nrc.govt.nz

Police Report



BB Police help with arrest of multiple burglary suspect

Bream Bay Police have played a key part in the arrest of a 30-year-old Waikato man who appears to have been on a crime spree over the upper half of the North Island. On 17 July a 69-year-old man answered a knock on the door of his Kaiwaka home to find a young man who asked for water for his vehicle. The visitor then took the opportunity to steal the householder's wallet and, shortly afterwards, used the pay wave cards inside to make purchases at nearby shops.

Several days later he went through the same routine with a householder in Whangarei. Constable Jordan White of the Waipu Police recognized the similarity in the two crimes and retrieved some video footage from the Kaiwaka shops, which helped to bring about the man's arrest in Te Kuiti. As a result of co-operative work by Police in Bream Bay, Auckland, Waikato and Whangarei this young man is now facing no fewer than 26 burglary charges.

Dangerous driving

At 1pm on 9 July Police received calls about a car being driven at speed and overtaking dangerously on State Highway One at Kaiwaka. The driver then lost control and crashed through a fence. A 20-year-old man from the far north has been charged with unlawfully getting into a motor vehicle and two charges of theft. He is also likely to face driving charges and depending on the result of a blood test, a possible driving while impaired by a drug charge.

Police looking for witnesses to assault at the Ruakaka shops

A man was assaulted after a minor nose to tail accident at the Ruakaka shops on Monday July 16 at 1pm. The assailant got out of his vehicle and punched and kicked the other driver who remained in his car. Police are making enquiries and would like to hear from anyone who witnessed the incident.

Boat stolen from Salle Rd. address

Over night on 11-12 July a *Ranco Dominator* boat on a trailer, valued at \$27,500, was taken from the front of a property in Sale Rd, Ruakaka. The boat was named *Get Loose* and had a Yamaha outboard motor.

Alleged burglary

On the night of 18 to 19 July a burglary allegedly took place at a house in Karo St., Ruakaka with a significant amount of property stolen including: computers and two vacuum cleaners valued at \$3,500 each.

Drink Driving

- On 6 July at 7.30pm a 66-year-old local man was stopped while driving on State Highway One. He was breath tested and returned a reading of 600micrograms of alcohol per litre of breath. The legal driving limit is 250mcg of alcohol. He will be appearing in the Whangarei District Court.
- On 11 July a 47-year-old local woman was stopped while driving on McEwan Rd. and returned a breath alcohol reading of 769 micrograms of alcohol per litre of breath. She will also be facing a drink driving charge in the Whangarei District Court.

Eleven minor vehicle accidents

Over the three week period from 3 -20 July, Bream Bay Police dealt with 11 minor road accidents.

Family Harm incidents

Between Tuesday 3 July to Friday 20 July Bream Bay Police dealt with 11 family harm incidents



WE PROVIDE:

- ▶ TREE PRUNING
- ▶ TREE REMOVAL
- ▶ VIEW RESTORATION
- ▶ MULCHING / CHIPPING

WE ARE:

- ▶ QUALIFIED ARBORISTS
- ▶ FULLY INSURED
- ▶ PROFESSIONAL
- ▶ LOCALLY OWNED

PHONE MATT : 027 912 7387 / 09 431 2259

matt@eagleeyetrees.co.nz

www.eagleeyetrees.co.nz



**WAIPU LIONS CLUB'S
WORLD FAMOUS IN WAIPU
SENIOR CITIZENS (60 Years+)
ANNUAL LUNCHEON**

Join us at the Waipu Coronation Hall
On Sunday, 29th. July
From midday for Happy Hour,
Then 1:00pm for a delicious roast,
dessert and refreshing fruit punch, or
byo if you'd rather
and great company

Any queries,
Call: Sharon Carroll – 432 0333.



Waipu Promotions (the working name for Waipu Business and Community Inc.) is holding its AGM on August 9th at the Pipers restaurant, Clansman Motel, Waipu. All members of the community are invited, whether members or not. We have Jon Moore the CEO of Northport attending as guest speaker. Northport has an exciting vision for future growth and Jon is taking this opportunity to share this with the Waipu community. As well as plans for expansion, Northport has its first cruise ship booking for the summer season of 2020 – 2021. This is an exciting opportunity for Waipu as the port hopes that this will be the first of many cruise ship visits. Waipu, with its unique heritage, environment and facilities is ideally positioned to take advantage of this tourist influx. We have two years to plan how we will take advantage of this exciting situation.

The aim of Waipu Promotions is "To make Waipu a great place to live, work and play". The committee organizes the Winter in Waipu celebrations, the Christmas parade and the markets on long weekends. We also offer networking and celebratory events for businesses and the community, but we need a few more people assisting us with small organizational jobs at the various events. It won't take a lot of time but we do need help to make things happen. Come along on the 9th of August and see what we are all about!

The inaugural Waipu Everyday Hero Awards



The inaugural Waipu Everyday Hero Award winners from left: Sharon Carroll, Trevor Vaile, Kay Dixon and Alan Nordich.

“These are people who have worked away quietly in the background often for many years.

“We understand there are many everyday heroes in our little community and we can’t recognize them all in just one year but we hope over time this will become a role of honour that will capture most of them.”

These are the words of Bruce Larsen, Chairman of the Waipu Business and Community Association, which held the inaugural Waipu Everyday Hero Awards dinner held at the Clansman Motel on Saturday 7 July. Award winners were:

Sharon Carroll who runs fitness classes in Waipu, serves on the Waipu Lions, the Bream Bay College PTA, the Waipu Cycle and Walkway Trust and was formerly a member of the Board of Trustees of Waipu

Primary School.

Alan Nordich who is employed by the Waipu 2,000 and Beyond group to keep Waipu’s public spaces clean and tidy. Alan was given the award for his strong work ethic.

Kay Dixon, Waipu’s very conscientious postie for over 30 years who is also a member of the 2,000 and beyond group and puts in many volunteer hours supporting Alan

Trevor Vaile, who has spent 40 years with the Waipu Fire Brigade, recently retiring as fire chief.

Trevor addressed the award organisers on behalf of the four recipients saying, “We don’t do it for the accolades but thank you very much for this.”



If your goal is healthy skin and what you're doing isn't getting you results. Please come to our exclusive V.I.P. Event to find out why.

SKIN IMAGE

Waipu V.I.P. Event
29th August 2018

For information and bookings: 022 3941184
86 The Centre, Waipu

Blinds & Curtains

**BIG DISCOUNTS FOR
HOUSE LOTS AND SENIORS**

- Mobile “in-your-home” service
- Pensioner & house-lot discounts
- Hundreds of samples
- 30 years in interior design

**FREE CURTAIN MAKING (OVER \$30M)
UP TO 60% OFF BLINDS**



FOR A FREE MEASURE & QUOTE
PHONE LESLEY

09 432 7140

windowdecor@hotmail.com

WINDOW DECOR LTD
Servicing Bream Bay & Mangawhai



GGW20447



GGW11501



GGW11525

Thinking about selling? Talk to us first. We are 100% committed to working in your best interest!



Jan Anderson

Selling Coastal Country

Ph: 021 380032 or 09 4321077

Email: jan@goodground.com

Web: www.goodground.com

Licensed REAA 2008



Shane Samtani

Supreme Sales Service

Ph: 022 3604444 or 09 4321077

Email: shane@goodground.com

Web: www.goodground.com

Licensed REAA 2008





Spice Route

FINE INDIAN CUISINE
Dine in or takeaway
All our curries are gluten free
Also fish & chips, pizza and burgers

OPEN 7 days from 4.30pm - 9.30pm.
And from 11am - 2pm Tuesday - Saturday.
Delivery in Ruakaka and One Tree Point

SPECIAL Dine with us for \$20
Includes: naan bread, rice and
any curry (with the exception of seafood)
and any beer.

5 Princes Rd., Ruakaka Phone 09-433 0003

Men in kilts and also a man in gumboots

Waipu had a decisive victory over Mid-Western at this year's Men in Kilts rugby game played under lights on the second field (to conserve number one for the home semi-final Premier game the next day) of the Waipu Caledonian Park on Friday 13 July. One member of the Mid-Western team played the whole game in a pair of red bands. He said he always played rugby in his gumboots.




The Turning Point

New Kitchens, designed, built and installed to the clients needs

Alterations, renovations,
kitchen upgrades, furniture repairs,
deck building and repairs.

Specialising in quality • 30 years experience
Trade certified joiner

Phone Steve King 09 432 1784 or 021 468 288

Fund raising to help MS sufferer travel to Russia for stem cell treatment



Amanda Berry with two-year-old daughter Nirvana at the Bream Bay Encounter Church playgroup fundraising morning.

The Bream Bay Encounter Church music and play group recently held a fund raising morning for one of its members: Amanda Berry, who was diagnosed in February last year with multiple sclerosis.

Amanda, who is married with four children - two pre-school children and two teenage daughters, suffers from dizziness and crippling headaches. She can no longer drive and can't walk even a short distance without needing to rest.

Amanda has been accepted for stem cell treatment at the National Pirogov Medical Surgical Centre in Moscow in the hope that this groundbreaking treatment will stop the progression of the disease.

The treatment and the travel will cost \$100,000, a daunting sum for a young family to come up with. However, the fund raising effort has already passed the halfway mark with a total of \$54,424 donated through a *give-a-little* page named: A Miracle for Miranda.

Church pastor Deidre Patchett said the playgroup morning, which included: stalls, face painting, a bouncy castle and pony rides was just one of many efforts. There have also been movie

nights and other activities.

Deidre said Amanda is a little embarrassed by all the attention and effort people are making on her behalf but Deidre has told her that this is something her friends are only too happy to do for her.

THE NEXT PUBLICATION DATE

of the Bream Bay News will be Thursday 9 August
The deadline for all copy is 4pm on
Wednesday 1 August



Rowells TYRES Ph 433 0313

Stockists of Maxxis Tyres



CALL BERT FOR YOUR TYRE DEALS

New & Secondhand tyres
available in most sizes



On Call 24 hrs 094330313
or Bert on 021983724



Car puncture repairs for pensioners - \$5

470 Marsden Point Road, Ruakaka

Courtesy car available by arrangement



STORAGE BREAM BAY

Makotahi Street, Ruakaka, 0110



- Fully Secure
- Carded Gate Entry
- Security Camera Surveillance
- Reasonable Rates

Website: www.storagebreambay.co.nz
E-mail: info@storagebreambay.co.nz
Phone: 021-432701 Fax: 09-4327029



Some big developments at Camp Waipu Cove

There have been some big developments at Camp Waipu Cove in recent times with a new multi purpose court available for public use completed just a month ago. The court has an astro - turf surface, a tennis net and basketball hoops will be installed at each end.

The new court cost \$150,000 to build, most of this expended on earthworks to build up the site which was a low lying waste ground area of the campground unsuitable as a campsite.

Camp managers Lucy and Anton Trist said the camp is doing well financially and it is pleasing to be able to give

something back to the community. Over the summer they hope to run a *King and Queen of the Cove* summer tennis competition and perhaps organize a tennis couch for groups of children.

Lucy said this wouldn't impact on the Waipu Tennis Club which closes over the summer holiday period.

At the end of last year two new upmarket two-bedroom cabins were built, each capable of sleeping six people. Over the next three years there are plans to build four more cabins, which will give the camp 16 cabins in total.

Lucy said the new cabins are proving very popular and provide their guests with more options, as particularly older people, don't always want to go camping.

Over 100 solar panels installed on the roofs of the camp's ablution block allow the camp to run on the power of the sun for most of the daylight hours.

The camp's AED (automated external defibrillator) unit has been moved to a cabinet on the wall outside the reception and has been registered with emergency services so it is accessible 24/7. Users need to first dial 111 to obtain the code to open the cabinet.

Further work is being carried out on rebuilding the sand dunes at Waipu Cove another 100 metres of dune will be planted with 2,000 dune plants by children from Waipu Primary School on 8 August. The Northland Regional Council is supplying the plants and Cove Café is sponsoring the earthworks



Camp managers Lucy and Anton Trist on the new multi purpose sports court

to reshape the dune.

Having a good relationship with the Waipu Surf Lifesaving Club is helpful to the camp, which uses the surf club building for movie nights and discos over the summer. Camp Waipu Cove handles bookings for the Surf Club and the two work together in hosting school camps, which are increasingly popular from Waitangi weekend through until the end of March.

Camp Waipu Cove was recently awarded a *Trip Advisor Hall of Fame* award after receiving *Trip Advisor Certificate of Excellence* awards for the past five year. These awards are given to businesses which receive overwhelmingly positive independent customer feedback through the Trip Advisor website.

The number of what the camp management terms *annual site holders* who pay a fixed fee to retain a campsite from year to year has fallen from 125 to 77 in the last six years. Lucy said between 15 – 20 families might use those 48 extra now available sites over a summer.

The camp's management board has increased the fees for annual sites to \$5150 or \$5810, for premium sites, and is currently not accepting any new applications for these sites.

Camp Waipu Cove as well as the public reserve to the north sits on public land held by the Department of Conservation and is administered by an elected board.



Otamatea High School
Te Kara Tuwhia o Otamatea

OPEN DAYS

2019 Year 9-13 students Tuesday 7th August at 9.45am
Be a high school student for the day.

2019 Year 7 & 8 students - Thursday 9th August at 9.45am
Come along to our hands on interactive day.

Parents/caregivers are warmly invited to join in with your child to experience what Otamatea High School has to offer.

We look forward to seeing you.

For more details please ring Otamatea High School 0800 682 628 or email ohs@otamatea.school.nz





OPEN 7 DAYS-AND 5 NIGHTS
GREAT NEW MENU.
ROAST DINNER ON SUNDAY (Plus full menu)

Winter Hours
Mon & Tue 8am - 4 pm
Wed 8am - 7pm
Thur & Fri 8am - 8pm
Sun 8am - 7pm

Come and check out our new patio!

PH 432 7097 or check our facebook page
[www.facebook.com](http://www.facebook.com/Land-Sea-cafe-bar-and-eatery)
[/Land-Sea-cafe-bar-and-eatery](https://www.facebook.com/Land-Sea-cafe-bar-and-eatery)

We'll have what you need to know !



Kelly 200 sqm

\$348,000 incl gst

Includes: plans, consent, kitchen, appliances, tinted double glazed windows, tiles, carpet, curtains and blinds



Wayne Pickerill
Managing Director

"Hi, I'm Wayne Pickerill, Managing Director and Project Manager for your new Fowler Home. Enjoy quality and all the benefits of dealing with an efficient, low overhead, nationwide company, where I will take a personal interest and be involved through to completion."



**FOWLER
HOMES™**

More designs at www.fowlerhomes.co.nz or visit our office at 63 Walton St, Whangarei. Phone Wayne Pickerill 438 4840



LET’S CHAT ABOUT
OUR PLANS FOR YOUR
RETIREMENT



MAKE BREAM BAY VILLAGE
YOUR FUTURE HOME

Two bedroom, two bathroom architecturally designed Villas, with Garage, Summer House, Indoor Spa and Pool, Bowling and Putting Green. Motorhome and Boat parking is also available for residents use.

Priced from \$490,000 now under construction with the first residents able to move in early October 2018.



www.BREAMBAYVILLAGE.co.nz

CALL JANET ON: 0800 273 262

Croquet in Tartan



From left: Alison Worthy, William Wright, Sue Codlin, Mick Dinon, and Christine Martin were in charge of handing out the atholl brose at the Waipu Croquet Club's tartan tournament held on Thursday 5 July. Forty players from clubs as far afield as Kaitaia in the north and Papakura in the south took part.

A winner at the Pets in Tartan Parade



Maggie Wistrand's little Bichon Maltese cross Larry won the prize for the *Best Dressed Small Dog* at the Waipu Vet Centre, People and Pets Parade on Saturday 7 July. Maggie even made Scruffy a pair of tartan leg warmers. Amongst Larry's prize package was a small dog sized dinosaur suit.



STARTERS

- Garlic Bread 6.90**
Grilled Focaccia with homemade garlic butter
- Shrimp Cocktail 14.90**
Classic shrimp cocktail dressed with creamy Maryrose sauce and served with fresh lemon
- Seafood Chowder 15.90**
Classic seafood chowder served with garlic bread
- Calamari 13.90**
Salt and pepper calamari served with petite salad, garlic aioli and fresh lemon
- Buffalo Wings 12.90**
Six buffalo wings served with creamy blue cheese dipping sauce

BURGERS

- G/F option available on request add 2.00
- All burgers come with fries
- Crispy Chicken Burger 16.90**
with bacon, grilled pineapple and ranch dressing
- Classic Beef Burger 16.90**
with crispy onion rings, grilled cheese and BBQ sauce
- Fresh Fish burger 17.90**
beer battered fish, salad greens, dressed with tartare sauce
- Classic BLT 16.90**
Speaks for itself!

PIZZAS

- G/F option available on request
- Pizza Bread 9.90**
Garlic pizza bread, with cheese and drizzled with a balsamic reduction
- Meat Lovers 18.90**
A selection of salami, ground beef and bacon and red onion topped with BBQ sauce
- Seafood pizza 18.90**
A selection of Shrimps, surimi and mussel with red onion and topped with sweet chilli sauce
- Cajun Chicken Pizza 18.90**
Cajun chicken, with bacon, caramelized onion topped with ranch dressing

PASTA

- Chicken Fettuccine 20.90**
Chicken, bacon and mushroom, cooked in a creamy white wine sauce and served with shaved parmesan
- Vegetarian Fettuccine 18.90**
A selection of Feta, olives, capers, mushrooms, spinach and sundried tomato, finished with fresh herbs and olive oil

MAINS

- Scotch Fillet 27.90**
Scotch fillet steak cooked to your liking, served with beer battered onion rings, fries and a garden salad along with your choice of creamy mushroom sauce, red wine jus or garlic butter
- Rump Steak \$21.90**
Rump Steak cooked to your liking, served with beer battered onion rings, fries and a garden salad along with your choice of creamy mushroom sauce, red wine jus or garlic butter
- Classic Fish 'n' Chips 21.90**
Classic beer battered fish 'n' chips served with a garden salad, tartare sauce and fresh lemon
- Chicken Schnitzel 21.90**
Panko crumbed chicken breast served with a creamy mushroom sauce and fries
- Bangers and Mash 17.90**
Sausages served on creamy potato mash, with a rich onion gravy

DESSERTS

- Warm Chocolate Brownie 8.90**
Warm brownie drizzled with chocolate sauce and vanilla ice cream
- Sticky Date Pudding 8.90**
Sticky date pudding served with warm butterscotch sauce and ice cream
- Classic Ice Cream Sundae 7.90**
Vanilla ice cream, drizzled with your choice of, chocolate, strawberry or caramel sauce. Finished with chopped nuts, chocolate cigar and sprinkles
- Cheesecake 8.90**
Cheesecake served with fresh cream and a berry compote (please ask your wait staff for today's flavor)

KIDS MENU

- Chicken Nuggets and Fries 9.90
- Kids mini hotdogs and Fries 9.90
- Kids Cheeseburger and Fries 9.90
- Kids Ice Cream Sundae 5.00

SIDES

- Fries
- Mash
- Garden Salad
- Onion Rings
- All priced at 5.50

Please also see our chalkboard for today's daily specials

WINTER HOURS: Friday to Saturday 12 noon to 9pm, Sunday 12 noon to 8pm, Wednesday and Thursday 3pm - 9pm. Free venue hire for all private functions.

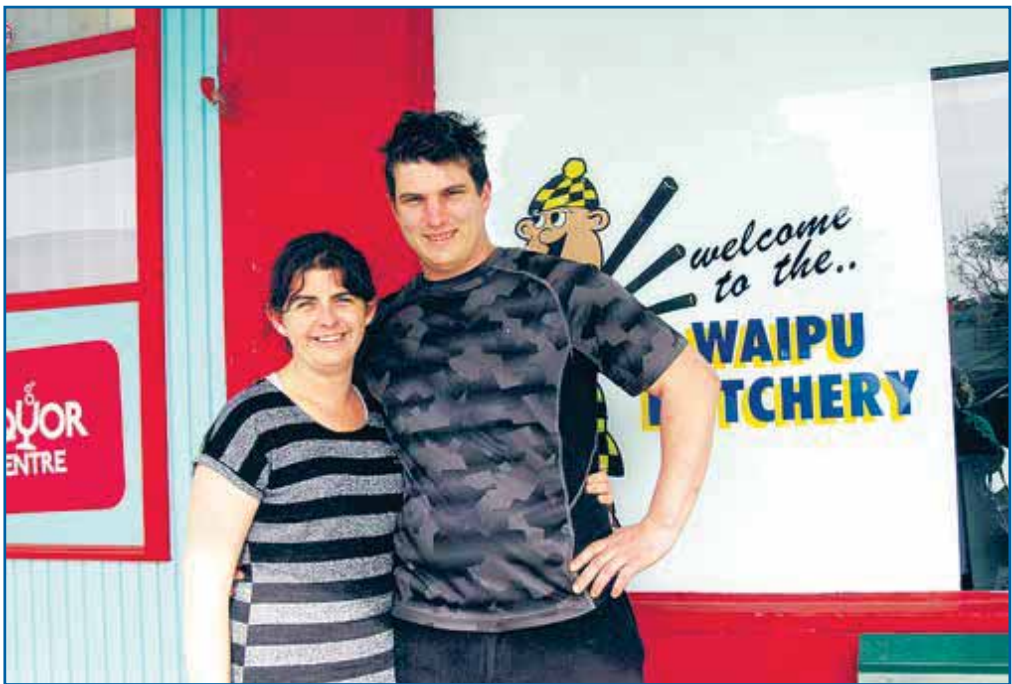
Our new chef is proving popular so bookings are recommended. Phone 432 7358 or 021 175 1881
Corner Sime Rd. and Marsden Point Rd., Ruakaka
Find us on facebook. <https://www.facebook.com> › Places › Whangarei, Northland › Restaurant

Marsden Point High Tides

	AM		PM	
Thu 26 July	6.19	2.4	6.56	2.5
Eri 27 July	7.05	2.4	7.38	2.5
Sat 28 July	7.48	2.4	8.18	2.6
Sun 29 July	8.28	2.4	8.56	2.6
Mon 30 July	9.07	2.4	9.33	2.6
Tue 31 July	9.46	2.4	10.11	2.6
Wed 1 August	10.25	2.4	10.50	2.6
Thu 2 August	11.06	2.4	11.30	2.5
Fri 3 August	11.49	2.4	~	~
Sat 4 August	12.13	2.5	12.36	2.4
Sun 5 August	12.59	2.5	1.27	2.4
Mon 6 August	1.49	2.5	2.24	2.4
Tue 7 August	2.45	2.5	3.26	2.4
Wed 8 August	3.46	2.5	4.30	2.5
Thu 9 August	4.49	2.3	5.31	2.6
Fri 10 August	5.51	2.6	6.30	2.8

Young couple take on the Waipu butcher shop

The Waipu butcher shop has new owners. Cameron Miller and his partner Chloe Evans took over joint ownership of the business from the Auckland based company Rosebank Mini Mart Ltd. on Friday 20 July. The business is to be renamed as “Millers Meats.” Cameron grew up in Waipu. He served his apprenticeship with former Waipu butcher Kyle Thomas and spent seven years working with Kyle. In total he has been a butcher for 12 years, the four years away from



Cameron Miller and his partner Chloe Evans are excited and a little bit nervous about thier new venture

Waipu gaining experience in a number of different butcheries, including seven months at the Mad Butcher shop in Northcote. Cameron says he will be selling free-range pork and bacon and free-range chicken. There will be sausages in a variety of flavours and, as well as the usual beef and lamb products, he will stock some top of the line

gourmet quality Wagyu beef. Family members turned up last weekend to help with a complete scrub down of the Waipu shop and all its fittings. Cameron’s mother Jo was there as well as Chloe’s parents, sister and two nieces. The shop will be closed for a week while the clean up and refurbishment continues. It will re-open on Thursday 2 August.

Cardio Drumming

Bring a drink, towel and your FUNKY Attitude!!!



A FUN way to get fit!
Drum on a Swiss Ball to the beat of music
No skills needed – for all fitness abilities

Monday 6pm Mangawhai Domain
Tuesday 6pm One Tree Point Yacht Club
Wednesday 6pm Waipu Scout Den
Friday LOW Impact 9am Ruakaka Rec Centre

\$10.00

Contact Nadya: 027 866 0334

Check us out on facebook: “BeneFIT Cardio Drumming”

THE NEXT PUBLICATION DATE

of the Bream Bay News will be Thursday 9 August
The deadline for all copy is 4pm on
Wednesday 1 August

Bring your own bag when you shop at Waipu Hammer Hardware

Single use plastic carry bags are no longer being handed out with purchases at Waipu Hammer Hardware. This is a policy across all Hammer Hardware and Mitre 10 stores but one Coralie Roberts of the Waipu store says she is happy to go along with. The policy has been in place since 1 July and Coralie says, while there have been a couple of disgruntled customers; most people are supportive of the initiative. The store has some large cloth re-useable shopping bags on sale at \$1 each for people who find they are in need of a carry bag.



Coralie Roberts and Luke Murray with some of the Hammer Hardware carry bags

NEW TYRES

Fitted, balanced and inclu. GST

13" from \$85 * 14" from \$99 * 15" from \$110 * 16" & 17" from \$110 *

* While stocks last

Large selection of quality used tyres

MAGIC TYRES & MAGS 4 Reyburn St. 438 3534

Waipu supporters at Toll Stadium for big game

Photo by Steve Challis



Waipu Rugby’s yellow and black colours were in strong evidence at Toll Stadium on Saturday afternoon for the club’s senior premier team’s game against Kamo in the Northland Bayleys Premiership final on Saturday afternoon 21 July.

Three Waipu players selected for Northland

Three members of Waipu Rugby’s Premier Team have been signed with Northland Rugby as part of the 2018 Northland Taniwha Mitre 10 Cup Squad. The youngest of these is 20-year-old Sam McNamara, who plays as a loose forward and captains the Waipu

Team. Lock Temo Mayanavanua and prop Ropate Rinakama, who already has 10 Northland caps, are also part of the squad. The first Northland game in the Mitre 10 series will be against North Harbour on Thursday 16 August in Albany.

Bream Bay College girls’ football team wins Northland Secondary Schools Div 2 competition

The Bream Bay College girls’ football team won the Northland Secondary Schools Division 2 competition in an exciting penalty shoot out match played at Bream Bay College at the end of last term. At full time the score was 1 all but Bream Bay prevailed in the shoot out. Coach Annemarie Lambly said at the start of the season 10 of her 15 players had never played football before. In their first game they were beaten 3 -0 by Otamatea. They played two sets of round robins against Otamatea, Rodney and Dargaville, coming second behind Otamatea then had to meet an unbeaten Kamo High School team in a semi final match which Bream Bay won 2-1. Annemarie said in those later matches she could have conversations with the girls to work on a game plan and it was pleasing to see some of those strategies put into action. The Bream Bay College boys’ team, playing in the first division, finished the season with six wins, two



The Bream Bay College and Otamatea High School Girls’ football teams after their final game played at Bream Bay College. draws and one loss. The team was unlucky not to make the final four play offs, finishing up in fifth place.



So near and yet so far!

It has been an outstanding season for Northpine Waipu Premiers, making the final of the Bayleys Club Premiership for the first time in 12 years. There was plenty of optimism in the camp and a strong contingent of yellow-and-black supporters making appropriate noises, but the team fell at the final hurdle, beaten convincingly by Kamo 35-10 last Saturday at Toll Stadium.

Northpine Waipu had recovered well from an early setback (down 8-0 inside 5 minutes) to wrestle back the lead 10-8 after 22 minutes. Prop Taniela Koroi completed a period of sustained attack to dive over near the posts for what turned out to be our only try of the final. In fact, Waipu had the best of territory and possession for most of the first half – but Kamo absorbed the pressure well. And the old adage about a team scoring “just before and after the break” proved true – Kamo nabbed a penalty to reclaim the lead 11-10 at halftime, then scored two tries almost immediately after the resumption. We never recovered.

Well done, Kamo, you deserved to win. But we are stoked by the performance of the entire Waipu team, management and supporters throughout a special season. Thanks to all our volunteers, especially those who organised the feast for Saturday night, stocked and worked the bar, organised the buses and welcomed our team home. Special thanks to our cleaning ‘Angels’ – Sara, Vicki and Katherine. Finally, thanks to the Northpine Waipu Premiers for your 100% commitment and contribution through a long and demanding season that began in early March – worthy finalists in the Premiership. We are so proud of you all.

FORWARDS: Livai Tofohe; Michael Lea; Taniela Koroi; Alexander Smith; Temo Mayanavanua; Sam McNamara; Mathew Jensen; Nick Murray. **BACKS:** Emil Pittman; Karaitiana Vette-Welsh; Sam Abraham; Tai Tupou Tavita Gadeisuvu; Jason Young; Ben Mathers. **RESERVES:** Michael Tuiloma; Benjamin Tou; Lucas Albornoz; Setefano Funaki; Demetrius Moalo ; Popoi Finau; Mane Abraham. **MANAGEMENT** Graeme Dewes, Phil Halse, Truman McCarthy.

**NORTHPINE
GROWING
STRONGER**
www.northpine.co.nz

Ruakaka Stationery & Gifts

Ruakaka Town Centre

Shop local for all your needs:
Stationery, Books, Toys, Magazines
Greeting Cards, Clothing,
Gifts & Souvenirs



Phone
432 8104

New Zealand Post

Open Saturday until 7pm.

Ruakaka School children cook up a feast from their garden

The staff room at Ruakaka Primary School was full of delicious smells and busy children on Thursday 5 July when classes took turns harvesting vegetables from the school garden to prepare a feast, for the whole school to enjoy.

Right: nine-year-old Erica Hamilton grates carrots for a salad.



Below: Riley Irvine aged 9 (left) and James Burchett, 10, prepare to make a quiche with some broccoli and silver beet from the school garden.



WHAT'S ON IN BREAM BAY

- **TE REO CAFE** at the Pizza Barn at 6pm on Thursday 26 July. A chance to korero te Reo Maori. All welcome.
- **WAIPU LIONS SENIOR CITIZENS LUNCHEON**. In the Coronation Hall Happy hour at mid-day. Lunch at 1pm. Free to all local people aged over 60.
- **WAIPU FIRE BRIGADE SHORTBREAD COMPETITION** Saturday 29 July. bring your entries to the Fire Station in Nova Scotia Drive. between 11am - 12 noon and explain why your shortbread is special. Prizegiving at 3pm.
- **WAIPU BOUTIQUE SUNDAY MARKET**. In the Waipu Coronation Hall. Next on Sunday 12 August from 9am - 1pm.
- **RUAKAKA RACES**. Next on Sunday 12 August. From 11.30am - 4.30pm. Sunday spit roast meeting. Spit roast meals available. Booking essential.
- **THREE HOUSES DOWN AND GENERAL FIYAH** On Saturday 14 August at the Ruakaka Tavern. Tickets form the venue or from www.ticketSPACE.co.nz
- **MARSDEN COVE MARKET** Next on Sunday 19 August from 9am - 1pm. In the marquee at the Marsden Cove Marina.
- **RUAKAKA RECREATION CENTRE CAR BOOT SALE**. Saturday 25 August in the Takutai Place car park. From 10am to 2pm.
- **MASQUERADE PARTY** Saturday 6 October from 7pm to midnight at the Ruakaka Recreation Centre. Tickets \$25 from the Rec Centre.

RUAKAKA RECREATION CENTRE

BRING YOUR LOOT TO THE CAR BOOT SALE

INDOOR

TO BOOK A STALL PLEASE CALL 432 7962
LOCATION: 9 TAKUTAI PLACE RUAKAKA
SATURDAY 25TH OF AUGUST 2018 10AM TO 2PM
STALL FEE \$10
SAUSAGE SIZZLES, COFFEE/TEA
UPSTAIRS LOUNGE

FOR MORE INFO PLEASE VISIT RUAKAKA RECREATION CENTRE FACEBOOK SITE

Ruakaka Recreation Centre Presents

MASQUERADE PARTY

SATURDAY 6 OCTOBER 2018

7:00pm - 12:00 midnight

Who is behind the mask...

A night of fun, mystery and intrigue...

\$25pp includes finger food

Tickets are available from the Rec Centre or email: ruakakarec@xtra.co.nz or Phone 09 432 7962 - See our Facebook page for more info.
Over 18's only. Cash bar.

COURTESY TRANSPORT IS AVAILABLE ON THE NIGHT
(Tir seal roads only)

Get a group together and come and have some fun!

Ships expected at Marsden Point



The coastal tanker Kakariki loading refined oil products on Jetty 2 at the Marsden Point Oil refinery.

Photo by Peter Grant

- *DL Lilac* ETA 26 July. ETD 28 July Loading logs.
- *Coretalent OI* ETA 27 July at 11am. ETD 30 July at 7pm. Loading logs.
- *Luenho* ETA 27 July at 11.59pm. ETD 29 July at 1am. Delivering fertiliser.
- *Melanesian Chief* ETA 28 July at 11am ETD 1 August at 7am Loading LVL in containers.
- *Aotearoa Chief* ETA 28 July at 10pm ETD 31 July at 9pm. Loading cement at Portland for Auckland.
- *Kokako* ETA 29 July at 12.01am. ETD 30 July at 9pm. Loading refined oil products at the Marsden Point refinery for Lyttleton.
- *Szechuen* ETA 30 July at 4am. ETD 5 August at 8pm. Loading sawn timber and veneer.
- *Inase* ETA 30 July at 4pm. ETD 1 August at 3pm. Loading logs for China.
- *Glorious Maple* ETD 30 July at 6.20pm. ETD 2 August at 2pm. Loading woodchip for Japan.

- *Aotearoa Chief* ETA 25 July at 1pm. ETD 27 July at 7am. Loading cement at Portland for Auckland.
- *ISS Cantanta* ETA 25 July at 9pm. ETD 27 July at 3am. Loading logs for China.
- *Baltic Purple* ETA 26 July at 8am. ETD 29 July at 4pm. Loading kiwifruit.

- *Matuku* ETA 30 July at 9pm. ETD 1 August at 9am. Loading refined oil products for Tauranga.
- *Yangtze Flourish* ETA 30 July at 9pm. ETD 6 August at 4am. Loading logs for India..
- *Super Kate* ETA 31 July at 12.01 am. ETD 4 August at 3pm. Loading logs.
- *SBI Hyperion* ETA 31 July at 7pm. ETD 10 August at 7am. Loading logs.
- *La Chambordais* ETA 31 July at 8pm. ETD 2 August at 5pm. Loading logs.
- *Alan Sejahtera* ETA 1 August at 12.01am ETD 7 August at 7pm. Loading logs.
- *Somar Rossi* ETA 2 August at 5am, ETD 2 August at 7pm. Loading containers.
- *Golden River* ETA 4 August at 8pm. ETD 7 August at 2pm. Loading logs.
- *Matuku* ETA 5 August at 1pm. ETD 6 August at 6pm. Loading refined oil products for Lyttleton.

TRADES & SERVICE DIRECTORY Ph 09 432 0209



BREAM BAY WATER PURIFIERS

Zane Jones

459 1147 or 021 293 5791
zaneandruth@xtra.co.nz

**Filters
Coolers
Distillers
Ultra Violet
Mob. Homes**

**This Space
Now available**
\$36.30 gst inclusive
or for regular customers
(six or more insertions)
\$27 plus gst.

BREAM BAY ENGINEERING

General & Marine

Mob: 0275 308 316 - Ph 09 432 0068
Email: breambayengineering@gmail.com

IRYCO
Quality hose and fittings



Pacific Painting & Decorating

INTERIOR - EXTERIOR - COMMERCIAL - RESIDENTIAL
20+ YEARS EXPERIENCE - FREE QUOTES

'PAINTING WITH PRECISION'

Ph Johnny Fetelika: 0274 945 563

Covering Bream Bay, Waipu, Langs Beach & Mangawhai

Roland Mosley

Licensed Building Practitioner

35+ years experience in
Residential and Commercial Building.
Project Management a speciality.

Correct phone number is: 0275 556 362
rolandmosley78@gmail.com

MOSLEY BUILDERS LTD.



Proplast is experienced in all aspects of plastering including Interior, Exterior, Gib Stopping, Texture and we are the Solid Plastering Experts specialising in outdoor fireplaces.

We are always happy to provide advice and or a no obligation free quote.

Call Julian: 021 913 188
Email: info@proplast.co.nz
www.proplast.co.nz

CRACKER LAWN MOWING SERVICES

- RIDE ON MOWING
- PUSH MOWING
- HEDGE TRIMMING
- SECTION MAINTENANCE
- GREEN WASTE RUBBISH REMOVAL



ANDY WALLACE 0273 410 417

DRAIN'n MAINTAIN

WE'RE NOT JUST DRAINAGE

DRAIN UNBLOCKING • WASTEWATER SYSTEMS
WATER TANKS • FARM IRRIGATION
WATERBLASTING / HANDYMAN SERVICES

STEVE & ANN • 022 487 4829
DRAINnMAINTAIN@GMAIL.COM

Ash Worthy Small Block Mulching



NO JOB TOO SMALL!
027 313 4429



We supply and install all types of water purification systems:

- TANK WATER UV SYSTEMS • BORE WATER SYSTEMS • REVERSE OSMOSIS
- REPLACEMENT FILTERS • FRIDGE & COFFEE MACHINE FILTERS
- WATER COOLERS & FOUNTAINS • UNDER & OVER BENCH SYSTEMS
- WHOLE HOUSE WATER SYSTEMS

Justin Cookson Owner//Operator . Certifying Plumber
0274 788 034
justin@nwp.co.nz/www.nwp.co.nz

BLINDS AND SHUTTERS WHANGAREI

Locally owned and operated

CUSTOM MADE

House lot discounts

Rollers - Verticals - Venetians - Shutters

Phone Gail 09 430 35 35 - free consultation

www.blindswhangarei.co.nz

Smart Water & Irrigation Ltd.



- Water Pump Repairs
- Irrigation
- Water Tanks
- Farm Water Reticulation
- Water Treatment
- Effluent Systems
- Water Harvesting

Matt Clayton

Ph: 022 417 6061

matt@smartwaterandirrigation.co.nz
www.smartwaterandirrigation.co.nz

TRADES & SERVICE DIRECTORY Ph 09 432 0209



rebecca baker design

rebecca baker
interior design consultant

027 541 9557
becsbdesign@xtra.co.nz
www.rbdesign.nz

Ph: 09 432 0123

BREAM BAY GLASS
FOR ALL YOUR GLASS NEEDS



Mob: 0274954548



BUGS AWAY
Spraying & Enviro Washing

GRANT DAVIES owner / manager
Phone 027 780 7777
Email grantdaviescontractor@gmail.com



Registered Electrician
KIRK ROBBINS
Mob: 021 236 9551

- Residential • Commercial
- Alarm Installation & Maintenance

ABSOLUTE CONCRETE

www.absoluteconcrete.co.nz
CULVERT PIPES
Spun and reinforced
Crane truck delivery
Drainage Merchant - Hardware Store
Email: sales@absoluteconcrete.co.nz
Phone (09) 431 2211
KAIWAKA



MACSWAY SCAFFOLDING LTD
The Height of Safety

Qualified Experienced Tradesman Deliver & Erect
'State of the Art' Scaffolding
Ensuring you job is erected quickly and safely
*** CALL NOW FOR FREE QUOTE ***
PH 432 7643 A/H 0274 726772
Yard: Kepa Rd Industrial Estate, Ruakaka

COVE
Plumbing & Gas

Certifying Plumbers, Gasfitters and Drainlayers.

New Houses, alterations and maintenance.
Phone 09 432 0155 or 021 479 244



A and S CONTRACTORS Ltd
Ph: 09 430-0453

OPERATING QUARRIES AT WAIPU & RUARANGI
TOP MACHINE OPERATORS
Entrance ways, Driveways, Farm raceways, Building Sites & Earthwork Developments, Portable Crushers for hire for Farm and Forestry Quarry work and roading
LOCALLY OWNED AND OPERATED • PHONE ANYTIME
Find us online at www.aandscontractors.co.nz
Farm races a specialty

Bream Bay Pumps
Your LOCAL water pump specialist

Sales & Service
Household & Farm Pumps
Waterblasters
Orchard Sprayers
Waterfilters & UV Units

Jim Watson
Ph: 09 432 7077
0274 327 076
Prompt, Efficient Service



KAIPARA FLOORING CO
32 Hurdall Street East Maungaturoto
Independently owned & operated

Supply & Installation of Carpet, Vinyl, Vinyl Woodlook Planking
Stockist of 2 & 3 mtr wide vinyl & Carpet Short Ends
Residential & Commercial First Class Installations
Now accepting Q Card with 6, 12 & 18 month interest free terms
For a free measure & quote
Ph Christine (09) 946 9886 or 021 515 415



SPECTRUM
Plumbing & Drainage

021 671 788
spectrumplumbing.co.nz

ALL ASPECTS OF PLUMBING AND DRAINLAYING

Woods Waetford Bricklayers Ltd.
**BRICKLAYERS
BLOCKLAYERS**
www.bricklayers@gmail.com

021 0234 3923
021 0343 792

Grant McLean
Stock Agent for Bream Bay

Ph mbl 021 7758 48 mbl, hm 432 1602
Email: skincarla@xtra.co.nz

All aspects of stock sales including:
• dairy beef • bobby calves • store cattle • live export heifers
• sheep • pigs • supplying stock for slaughter

Also caters for small block holders.

Carrfields **Livestock**

Ruakaka Motors

Mechanical and Auto Electrical Repairs and Servicing

mla ASSURED
Monday - Friday 7.30am - 5pm
Open Saturday morning 8am - 1pm.
Tyres and Batteries
Warrant of Fitness testing
Phone 432 7233

PARADISE QUARRY

PARADISE QUARRY STONEMASONS
Specialists in stunning stone for landscape
Suppliers & installers of northland's own schist for all your stonemasonry & landscaping Requirements

(09) 432 2722 or GEOFF (021) 972 139
www.paradisequarry.com

PD Electrical LTD

New Installs, Renovations, Maintenance

Peter Dick 021-262 9516
Email: peterldick@hotmail.com

BLIND PRO

Blinds • Awnings • Shutters

Indoor blinds and outdoor screens
Call us today for a free, no obligation consultation and quote
ph 09 423 9661
website www.blindpro.co.nz
email info@blindpro.co.nz

McQUINN PUMPS
How's Business? ... It's Pumping!

24/7 SALES, SERVICE & INSTALLATION | PUMPS & WATER TREATMENT
PHONE SUPPORT AVAILABLE
8000 627 846
PHONE FREE

NOW AT 72 KIOREROA ROAD
—ALONG FROM RD1 & ITM

Deadline for next issue - Wednesday 1 August

TRADES & SERVICE DIRECTORY Ph 09 432 0209



HANSEN
Drainage & Earthworks

DRAINAGE:
* Septic Systems * Water Tanks * Truck & Digger Hire *
* Subdivisions * Domestic * Commercial *
Certifying Drainlayers

Licensed Contractor for
Waste & Drainage Work

EARTHWORKS:
* Subdivisions *
* Farm Work: Effluent Pond Design & Build, Dams, Races *
* House Sites * Driveway Prep * Lawns * Roothing *

P. 09 432-7877 M. 027-432-7877
E. Karl@hansendrainageandearthworks.co.nz



FENCING
Post & Batten
Stock Yards
Retaining Walls
ROGER SUTTON 021 272 1952



Brian the Painter
Decorator, Restorer, Handyman
Property Maintenance

No job too small,
No travelling time charges
Free advice

Phone 0274 882371 Or 09 431 4882
Email: hollis@hotmail.co.nz




BROWNE
CONTRACTORS

4T-DIGGER – BOBCAT – TIP TRUCK

Property Maintenance – Driveways – Building Sites
Stump & Tree Removal – Hole Boring – Chain Trencher
Calf Shed and Stockyard Cleaning

KAIPARA – WHANGAREI – RODNEY

Phone Matt: 021 199 6677
Email: mprabrownecontractors@gmail.com

LOW COST DRIVEWAYS & SURFACING NEEDS
Concrete or asphalt beyond your budget ...
We have the next best solution for a fraction of the price.
Call for a quote, you'll be pleased you did!
Paradise Quarry Contractors
Geoff (021) 972 139 or (09) 432 2722
For contractors who 'think' ...



GEOFF SPENCER
AUTO ELECTRICAL

- Scans, ABS, Airbags
- Alternators/Starters
- Commercial
- Tractors
- Motorcycles
- Wiring
- Mobile Service

Over 40 Years Experience
547 Mountfield Rd, Waipu

Ph: (09) 432 0373
Mob: 0274 942 635



EVOLUTION
ELECTRICAL SERVICES
STEVEN VAN VEEN
PH: 021 991 622

M.V.B. Electrical Ltd.
Repairs • Installations • Advice

Mike van Blommestein

Phone: 09 432 1015 • Mobile: 0274 783 749
Email: mikevanb@xtra.co.nz

Bay View
INTERIOR PLASTERING

FRASER KNIGHT
Ph 09 433 0115 Mob 0274 987 515

GRAEME BINT
FENCING
GOOD RATES, NO JOB TOO SMALL
09 432-1599 or
027-292-2833
— grbint@xtra.co.nz —

MANGAWHAI SMALL ENGINES
Grasshopper, Husqvarna and Honda dealer




194 Molesworth Drive, Mangawhai
Ph: 09 431 5270 or Mb: 021 655 481
Email: msengines@xtra.co.nz

Bream Bay Concrete Ltd.
Free Quotes • Reliable Service • Quality workmanship

- Concrete pads
- Shed floors
- Pathways
- Home floors
- Driveways
- Concrete cutting
- Excavation works
- Retaining walls
- Piling fences
- Profiles for homes & sheds
- Subfloors & boxing

Mark Royals Ph: 432 0107 Mob: 0274 433 130

BREAM BAY ACCOMMODATION
RUAKAKA
STUDIO - HOLIDAY HOMES - B&B
BOOK ONLINE OR PHONE
Ph: 09 432 7025 Mob: 021 2722 739
website for online bookings: www.breambayaccommodation.com

LAWSON
CARTAGE
FOR ALL YOUR
EARTHWORKS & CARTAGE NEEDS
Suppliers of: topsoil, compost, woodchip,
bark, sand, pebble, rocks and firewood.
Ph/Fax 09 432 8418 or 021 768 940
458 Marsden Point Rd. PO Box 142, Ruakaka 0151
email: lawsoncartage@xtra.co.nz

Carrs Quarry
One Tree Point Road
Ruakaka



**Crushed Aggregates
Available ex Quarry**

Contact us: Angus 027 244 6100
Walter 021 519 605

Waipu Wrought Iron
3318 State Highway 1, Waipu
Phone 09 4320 212 or 027 267 9157

Obelisks - Garden Arches
Growing Frames - Gates
Fencing - Furniture
www.waipuwroughtiron.co.nz



asbestos removal

Textured Ceilings
Asbestos Fibrolite
Asbestos Lagging

Garry Smith
Mob 027 738 7888

Ph 09 432 7305
Fax 09 432 7304
email: gpasbestos@xtra.co.nz
14 Bream Bay Drive,
Ruakaka, 0116

BREAM BAY NEWS PHONE 09 432 0209
Email: breambaynews@xtra.co.nz

Post copy to : Bream Bay News, RD 2, Waipu
Email: breambaynews@xtra.co.nz
or leave it at the Waipu or Ruakaka Post and Lotto Shops

FOR SALE

FRAMING H1.2 SG8
2.4-3.3M 70 X 45 \$2.58
1/m 90X45 \$3.45 1/m

Bream Bay Merchants
BuildLink 29-33 Kapa Rd, Ruakaka PH: 09 433 0077
www.breambaymerchants.co.nz

CHECK OUT OUR NEW WEBSITE Bream Bay Merchants BuildLink 29-33 Kapa Rd, Ruakaka PH: 09 433 0077
www.breambaymerchants.co.nz

HARDWARE SUPPLIES Bream Bay Merchants BuildLink 29-33 Kapa Rd, Ruakaka PH: 09 433 0077
www.breambaymerchants.co.nz

FARM GATES Bream Bay Merchants BuildLink 29-33 Kapa Rd, Ruakaka PH: 09 433 0077
www.breambaymerchants.co.nz

PLUMBING SUPPLIES Bream Bay Merchants BuildLink 29-33 Kapa Rd, Ruakaka PH: 09 433 0077
www.breambaymerchants.co.nz

CULVERT & DRAIN-COIL Bream Bay Merchants BuildLink 29-33 Kapa Rd, Ruakaka PH: 09 433 0077
www.breambaymerchants.co.nz

WATER TANKS

09 431 2211

sales@absoluteconcrete.co.nz

GARDEN**ALTER-NATIVES**

Nursery & Landscaping
now at 101 Kioreroa Rd, behind John Deere tractors, entrance by the dog pound.
09 974 8733
www.alter-natives.co.nz

WORMS FOR SALE
For worm farms
Phone 432 0209

FREE FOR REMOVAL

TRACTOR FREE FOR REMOVAL
Mitsubishi MT750D. At Waipu Cove. Goes well.
Ex golf course machine
A bit rusty, needs battery, good tyres - one is flat.
Ph 021 931699

SERVICES OFFERED

LINKING HANDS
Health Shuttle
Phone
432 7950

**Tree Removal**

✓ Pruning
✓ Chipping
✓ Stump grinding
Qualified & Insured
Ph Scott (0800) 468-9663
Arborcare
Tree Maintenance

**WATER TANK CLEANING**

No need to empty your tank

• Vacuum or full scrub

Phone Mark Draper
09 432 0655 or 0274 707 607

Waipu Boarding Cattery

Excellent care and accommodation
Ph Sue 432 0394

LIBRARY HOURS**WAIPU COMMUNITY LIBRARY HOURS**

Monday, Wednesday,
Thursday, Friday &
Saturday 10am - 1pm.
Tuesday 10am - 4pm.
The Waipu Coronation Hall
and Library
Phone 432 0372



RUAKAKA COMMUNITY LIBRARY

Takutai Place, Ruakaka
432 8406
Mon - Fri 9:30am-3:30pm
Sat 9am-1pm

JP Service available
Saturdays 10am - 11am.

THE NEXT PUBLICATION DATE

of the Bream Bay News will be Thursday 9 August
The deadline for all copy is 4pm on
Wednesday 1 August

CLASSIFIED ADVERTISING

Costs \$5 for up to 20 words and 20c for each additional word. Boxed, approx 4cm adverts cost \$15 plus GST

Phone your advert through to 432 - 0209

email to: breambaynews@xtra.co.nz

Post to: Bream Bay News, RD 2 Waipu 0582

or leave it with payment at *The Waipu Post shop*
or *the Ruakaka Gift and Lotto Shop*

SITUATIONS VACANT

2 Vacancies

Clinical Team Leader (Registered Nurse)
New Position
Practice Nurse
Both positions 4 days per week.



The Bream Bay Medical Centre is committed to the delivery of an exceptional medical service to the community of Ruakaka and surrounds. We offer great working conditions within a very busy, supportive and dedicated team.

Requirements:
Current Practicing Certificate
Current Indemnity Insurance

Ideally you will have:

Updated Smear taking and vaccination certificates would be an advantage – although full training and support is offered
Excellent communication and people focused service skills
Good command of verbal and written English
Good computer skills
Excellent time management skills

Working hours will be between 8.00 am – 5.30 pm.
The position will commence as soon as possible.

Please email your CV with a covering letter to kay@breambaymed.co.nz
Or post to Kay Brittenden, P O Box 132, Ruakaka 0151 by 4pm. 03/08/18.

Bream Bay Medical Centre is an equal opportunity employer.

NEW NEWSPAPER DELIVERY ROLES

No brochures
In all Bream Bay areas – some big - some smaller runs
Very early starts & finishes
Must have own vehicle, cell phone (& preferably computer)
Ability to work unsupervised a necessity
Phone/text
0211 566 094

**EDUCATORS REQUIRED CHILDCARE AVAILABLE**

Ruakaka, One Tree Point, Waipu and surrounding areas.
Contact Sonya
0276 323 906 / 09 432 1758
Email: shedkids@gmail.com

WORK WANTED

ALL ODD JOBS Retired carpenter.
Anything considered
Phone 0211 594 734

PUBLIC NOTICES**Marsden Cove Fishing Club Inc.**

Notice is hereby given for MCFC Inc.
Annual General Meeting 2018

To be held on
Sunday 29th July 2017 at 3pm
@ Marsden Cove Fishing Club
Marsden Cove Marina
One Tree Point.

For further information and apologies contact:
The secretary Mob: 021 737 898
e-mail: marsdencovefishingclub@gmail.com

BREAM BAY COASTAL CARE WORKING BEE

Clearing weeds and planting trees at the entrance to the Uretiti campground.
Saturday 28 July
From 9am - 11.30am
Bring a spade
We have some extras
Wear sturdy footwear.
Morning tea provided
PH 432 0209
for more info

PUBLIC NOTICES

The Waipu Lions are interested in sponsoring two students from the Bream Bay Area to participate in an R.Tucker Thompson Youth Voyage.



Applications are invited for a position on one of two voyages.

More information about the Voyage can be found at www.tucker.co.nz/youth-voyages

- Voyage leaving Opuia Wednesday 26th September. Returning Marsden Tuesday 2nd October.
- Voyage leaving Marsden Friday 5th October. Returning Opuia Thursday 11th October.

Applicants must be from the Bream Bay Area, between the age of 13-18 years. The applicant must tell us why they think they are worthy of the voyage, and how it will help them on the voyage application form that can be downloaded from the website at:
<http://tucker.co.nz/wp-content/uploads/2018/06/AAA-Trainee-Application-full-2018-1.pdf>

Applications must be received no later than August 22nd.
Applications sent to
The Secretary,
Waipu Lions,
PO.Box 79, Waipu.

Any question phone
Peter Blanch 021 0281 0385.
Or Trevor Murray 021 908 838.

WAIPU MENZSHED AGM.

Tuesday
28th August
9.00am
at the Menzshed.

Bream Bay Medical Centre Ltd

New Patients Welcome!

Monday - Friday: 8.30am - 5pm Saturdays: 9am - 12pm
Please advise at time of booking if you require an extended consultation

*Dr John Chapman, Dr Sue Hancock, Dr Karin Hiemstra,
Dr Saj Din, Dr. Christian Wieser, Dr. Vicky Bruce-Miller
Dr Katharine Taylor.*

Marsden Point Road, Ruakaka Town Centre, Ruakaka.
Ph: 432 8060 Fax: 432 8230

THE WAIPU CORONATION HALL COMMITTEE

Would like to thank everyone for their support of our recent fundraiser that helped to make the evening such a success.

A special thanks to Chris Townsend and the Basin City Big Band from Whangarei, which provided the great entertainment for the evening.

Also thanks to the Waipu Lions and David Picketts for their help on the evening.

AGM + Prize Giving
6:30pm 4 August 2018

@ Clubhouse Beach Rd Ruakaka

AGM followed by Prize Giving. Dinner will be provided after, for those present.
Please bring your own refreshments.
RSVP by 1 August to
ruakakasurfpatriol@gmail.com




AGM

Waipu Business & Community Incorporated

Will be held on
Thursday 9th August 2018 at 5.30pm
@ Waipu Clansman Hotel

Special Guest Speaker
Jon Moore - Northport CEO

Complimentary light refreshments provided

For further information and apologies

Contact Shane Samtani
(022) 360 4444



BREAM BAY SUNDAY CHURCH SERVICES

Presbyterian Camellia Ave, Ruakaka: 8.45am. The Centre, Waipu: 10.15am.
Prayer Service: 7pm

Encounter 223 Marsden Pt. Rd, Ruakaka, 10am.

Anglican 1st and 3rd Sundays - St Paul's Ruakaka 2nd and 4th Sundays - St Peter's Waipu, 5th Sunday - St Nicholas Mission to Seafarers'. Marsden Point All services start at 9.30am.

Catholic Holy Family Church, Ruakaka, 10.30am. Mass

Lifepoint. 300 One Tree Point Rd, 10.30am.

NEED HELP WITH THAT NEW DEVICE?

SeniorNet Bream Bay can help you with Apple and Android Desktops, Laptops, Phones, Tablets, Cameras Internet Banking + Gmail, Trademe and many more

A course brochure for: Term 3 can be found at the following outlets:

Hammer Hardware - Waipu,

Westpac Bank - Ruakaka

Ruakaka Stationery & Gifts

with the timetable, courses and costs

Bookings essential, please contact:

Learning Centre: 09 432 7692

(please leave a message)

Or email - seniornetbb@gmail.com

Course venue: Learning Centre, 7 Kapa Road, Ruakaka

KEEP YOUR MIND ACTIVE

HAVE FUN WITH YOUR APPLE IPADS/ IPHONES ANDROID TABLETS/PHONES

SeniorNet Bream Bay are offering you

Instruction with fun Apps

To take away the winter blues

When: - Monday 30th July

Time: - 10am - 12 noon

Cost: - \$5

Non Members Welcome

Bookings essential, please contact:

Learning Centre: 09 432 7692

(please leave a message)

Or email - seniornetbb@gmail.com

Course venue: Learning Centre, 7 Kapa Road, Ruakaka

Bream Bay Community Support Trust

- Free medical clinic each Wednesday 9am - 12noon.
- Free budgeting service by appointment - 432 7197
- Te Atarangi Te Reo class. Wednesday evenings 5.30pm - 8.30pm.
- Narcotics Anon Wednesdays 6.30-7.30pm
- Next SPCA Clinic Tuesday 31 July 9.30am - 11.30am.

The Bream Bay Community Trust offers:

- A Family Centred support team.
- Family violence Intervention advocacy
- Advice and referrals to other agencies and relevant support services.

Takutai Place, Ruakaka Phone 09 432 7197

PREMIUM.CO.NZ | FINE PROPERTIES

PREMIUM

SANDY MCKENZIE
021 431 541
09 432 0200
LICENSED SALESPERSON REA 2008

18 YEARS OF LOCAL REAL ESTATE SALES EXPERIENCE
YOUR BIGGEST ASSET IS IN SAFE HANDS
PREMIUM PARTNERSHIPS | PROVEN RESULTS

LANGS BEACH | 25 LANG ROAD
A Rare Find



SECTION

- No covenants, North facing with extensive sea views
- Elevated 2000m2 section
- Private and quiet with regenerating native bush
- Services to site - power, water and sewerage

PH | SANDY 021 431 541
PRICE | \$648,000
PREMIUM.CO.NZ / 27470

WAIPU COVE | 468 COVE ROAD
Platform To Perfection



SEAVIEWS

- Breathtaking seaviews over sand-dunes, estuary and across Bream Bay Coastline
- Elevated position encased by farmland
- 3.58 ha's all in pasture with gently sloping grounds. All day sun.
- Close walking track to the estuary
- Five minute drive to gorgeous beaches

PH | SANDY 021 431 541
PRICE | \$1,250,000
PREMIUM.CO.NZ / 27466

COAST & COUNTRY SALES LTD MREINZ LICENSED REA 2008

Waipu Real Estate
Selling Bream Bay

The Centre, Waipu Ph: 432 4000 Web: www.waipurealestate.co.nz

LIFESTYLE HAVEN
Early \$1,000,000's

Stunning property with rural and sea vistas. Grand 250m2, 4 bdrm villa with ornate high ceilings, 2 fireplaces, wood panelling, coloured glass and French doors. The systems are mainly new, including a self contained power supply. The master has ensuite, changing room and balcony. Set on 7.6 ha with a large implement shed/stable, 40 x 20m sand arena, 2 large water tanks, home orchard and native bush grove. Also \$30,000, worth of pines ready.

Mike Ferris 021 543 005 **WPU10950**

NEW LISTING

CLOSE AND QUIET !!
\$555,000

First home for the family starting on the real estate ladder, downsize for the family whose children have flown the coop or it even could be your holiday home close to some very beautiful beaches. The choice is yours! This 3 bedroom home is situated in a quiet cul de sac, just a stroll away from Waipu township with all its amenities on 921m2 of level land.

Roger King 0277 555 001
or a/h 09 432 1381 **WPU10961**

NEW AND READY FOR YOU
\$685,000

Brand new 3 bedroom home, with ensuite, set in a very friendly and quiet cul de sac just over 2.5 kms to Waipu township. A study nook, perfect for the home computer and double glazing to keep you toasty. Double garage for the cars and internal access. Set on 2030m2, so plenty of room for kids. Enjoy that morning coffee on a lovely sun drenched decking area. Close to the walkway into Waipu and not too far to head off for the summertime swimming.

Judy Guy 027 221 5623
or a/h 09 432 0486 **WPU10937**

LICENCED REALESTATE COMPANY (REAA 2008)

Bream Bay REALTY LTD Proud Sponsors of **SPCA WHANGAREI**

Town Centre, Ruakaka
Ph: 09 433 0300
Email: info@bbrealty.co.nz
www.bbrealty.co.nz

LOADED WITH APPEAL

Exciting opportunity to live low maintenance on the beach side of One Tree Point Road. Make the most of this great position with stunning views & room for the family with three plus sized bedrooms & a study nook. Kitchen & living is light filled, warm & opens up to the covered deck & private front yard. Spoilt for choice here with the upstairs bedroom having a sunny balcony & ensuite. Beach access for residents only.

\$745,000 — www.bbrealty.co.nz #3874
FIONA SOUTHOORN MNZM ph 021 317 775
Licensed Real Estate Salesperson (REAA 2008)

NEW LISTING

Open Home - Sunday 1.00 - 1.45pm
5 Barbados Way, One Tree Point

SPOILT FOR CHOICE

Welcome to number 5 Barbados Way. Backing onto the expansive, manicured grounds of La Pointe Beach Estate, step straight off your property and enjoy a round of golf any given day of the week, or cross the road to the residents only all weather tennis court. With 4 bedrooms, 2 bathrooms, a super roomy kitchen and dining area, and also a separate lounge, this large home is well set up for the family.

\$735,000—www.bbrealty.co.nz #3877
JANINE GOLDSMITH ph 021 432 793
Licensed Branch Manager (REAA 2008)

GREAT OPPORTUNITY— PRIME SPOT!

> 500mtrs to SH1 & close proximity to Port Marsden Highway
> Residential, general commercial, industrial, storage use.
> An abundance of off street parking and two road entrances
> 1,539m2 section - No Covenants
> 170m2 building with 3 phase power, 5mtr high doors, & 1 bed self contained apartment

\$575,000 — www.bbrealty.co.nz #3865
JOANNE DEWSON AREINZ ph 021 780 622
Licensed Real Estate Salesperson (REAA 2008)

AFFORDABLE SUMMER ESCAPE

This freshly decorated 3 bedroom home has potential galore! The outside space is left to the imagination. Whether you design a BBQ area or leave as is in grass, there is room for pets & enough area for the kids to run around. A flat walk to the surf beach, Ruakaka Town Centre, College and race course.

Asking Price \$389,000
www.bbrealty.co.nz #3875
FRANCIE STOKES ph 022 656 0165
Licensed Real Estate Salesperson (REAA 2008)

4HA LIFESTYLE BLOCK-ONE TREE POINT

> No Covenants
> Flat & really fertile land on the tar seal, a short distance to Marsden Cove Marina, One Tree Point, schools, bowling club & beaches. Ruakaka Town Centre is close by
> Views of Mt Manaia
> This is possibly the only bare block in this area

\$550,000 (incl GST)
www.bbrealty.co.nz #3870
ALAN SHEDDAN ph 021 810 319
Licensed Real Estate Agent (REAA 2008)

LISTINGS WANTED

Call me now for a NO COST APPRAISAL
LYNN PARKER
Ph 021 795 546
28 Years Experience

email: lynn@bbrealty.co.nz
Licensed Real Estate Salesperson (REAA 2008)