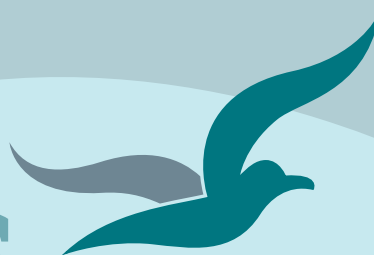


Bream Bay News



Est.1967 | Locally owned and operated | Delivered FREE twice a month 7 September 2023

Affordable Quality

- * SECURITY DOORS
- * INSECT SCREENS
- * SHOWER DOORS
- * BLINDS
- * AWNINGS
- * WARDROBE SYSTEMS

www.homeplus.co.nz



34 Albert St
Whangārei

Est. 1977

PH: 438 9452

whangarei@homeplus.co.nz

Strong support for cycleway network in One Tree Point and Ruakākā

There is strong public support for a network of off road cycleways in One Tree Point as evident by a meeting at the Marsden Cove Fishing Club last Wednesday 30 August, attended by around 100 people.

Steve Gibson of Marsden Cove Maritime Holdings told the meeting how a small group of locals had been meeting and discussing a proposal for a shared path link between Marsden Cove and the Ruakākā shopping Centre for over a year.

A possible route had been established from behind the Marsden Cove Marina over a Marsden Maritime Holdings land onto McEwan Rd where a bridge extension would be needed on the State Highway 15 overpass and then onto Marsden Point Rd., which has a wide enough berm to allow for a 2.5metre wide pathway.

Councillor Phil Halse had since provided a map showing Council easements, which could take the trail from Marsden Cove the southern edge of the Marsden City development and the Bream Bay Village. He has suggested a disused tunnel built for a dairy herd could be utilised as a tunnel to get cyclists safely under SH15. The Council easement maps also showed a possible trail loop out to Takahiwai.

A further trail, already used by some cyclists is possible along the Channel Infrastructure pipeline which runs through the dunes. This route, which would form

Continued on page 3

Super blue moon over Bream Bay

Photo by Kevin Wigmore



"Wow, we just witnessed the Super Blue Moon rising over Bream Bay. It was superb!" wrote Kevin Wigmore who sent in a collection of stunning photographs he took from the Ruakākā Estuary at around 6.15pm on Thursday 31 August when the moon was at its biggest and brightest.

It was the second full moon of August, hence a blue moon and as it was unusually close to earth, it was a super moon..

Kevin said he saw other people rushing down to the river to take photos on their cellphones.

"There was quite a bit of excitement."



Langs Beach 10 Breadalbane Place

881sqm  6  4  2 

Price by Negotiation

Christine Birss 027 235 4323 christine.birss@bayleys.co.nz

MACKYS REAL ESTATE LTD, BAYLEYS, LICENSED UNDER THE REA ACT 2008

Beachfront stunner. Gorgeous views.

Like your own private resort, your family and friends will be very grateful if you are lucky enough to buy this special property

With simply a large grass reserve between you and the sand, it's hard to beat this position.

Beachside patio, large inside living areas or private courtyard - you choose where you want to relax.

Opportunities like this don't happen often. Contact Christine today

bayleys.co.nz/1153182

BAYLEYS



Rick Stolwerk
Coastal South Councillor for
Northland Regional Council

If you have any general questions on environmental issues, pest management control, maritime safety concerns or specific questions in relation to my role as Chair of the Northland Regional Council's Sub Committee - Investment and Property, and as the NRC representative on the Northland Civil Defence Emergency Management Committee

Please contact me by phone or email

09 432 0741 or 021 823 770
ricks@nrc.govt.nz

For all your Household Needs, DIY and Gardening Supplies, Fencing Equipment, Plumbing & Electrical Fittings.

SPRING IS HERE, TIME TO GARDEN!

OPEN 7 DAYS Monday - Friday 8:00am - 5:00pm
Saturday 8:00am - 4:00pm | Sunday 9:00am - 3:00pm
Public Holidays 9:00am - 3:00pm
Waipu Hammer Hardware | 35 the Centre, Waipu | 09 432 0292

THE BREAM BAY NEWS

is published by Bream Bay News Ltd.
 Address : RD 2, Waipu Phone : (09) 432 0209
 Mobile: 027 432 0070 Email : breambaynews@xtra.co.nz
 Website: www.breambaynews.co.nz
 Editor: Marilyn Cox . Accounts : Susan McRae.
 Technical assistance... Geoff Spencer
 Advertising design and website maintenance... Megan Lea.
 Printed by NZME
 We distribute 5,900 copies twice a month throughout Bream Bay, Maungaturoto and Mangawhai.

EDITORIAL

Imagining a network of cycle and walking trails in Ruakākā and One Tree Point

There are so many wonderful cycleways in towns and cities around New Zealand. Last month Geoff (my husband) and I spent a couple of days cycling on the Te Awa trail along the Waikato River from Hamilton to Cambridge and then from Hamilton to Ngarauwahia. The trail is 70 kilometres long in total and three metres wide and has either a concreted, boardwalk or paved surface. Just south of Ngarauwahia it crosses the purpose built 130-metre long Perry Bridge. A lot of money has been spent here .

Along the route there were storyboards with information about the history and various industries past and present of that area. I thought about what a rich history could be displayed alongside a network of cycle trails in Ruakākā and One Tree Point. Story boards with historic photographs could commemorate: the construction of Northport, the history of the Marsden Point Refinery, the Marsden A and B Power stations, early days at the Ruakākā Surf Lifesaving Club and the Ruakākā Beach campground, the farming families who transformed that flat peat land into pasture for dairy farms, the Croatian gum diggers, the shark harvesting and drying industry at Takahiwai, the centuries of Māori settlement of the area.

Earlier this year I visited one of my brothers, who lives in Port Chalmers, just out of Dunedin. I was amazed to see a shared pathway for cyclists and walkers under construction with a sealed surface and big timber retaining walls. One section is built on piles over the water.

Doing a bit of research I find this trail is being built by Downers for Waka Kotahi at an estimated cost of \$37 - \$43 million. The completed trail will run 10 kilometres from St Leonard to Port Chalmers and has been named Te Aka Ōtākou (the Otago Vine) because of its winding nature and the way it clings to the harbour.

On the Waka Kotahi website it is listed as *Dunedin to Port Chalmers Safety improvements* and the introduction reads: "We're making SH88 Dunedin to Port Chalmers safer for everyone, by providing an attractive and secure off highway route for pedestrians and cyclists and increasing safety for other road users."

The population of Port Chalmers was 1,440 in June 2022. In One Tree Point and Marsden Bay combined the population was 2890 on this date, so double that of Port Chalmers. Lots of cyclists use One Tree Point Rd, Port Marsden Highway and Marsden Point Rd., which they share with trucks travelling to the port. It is very, very dangerous. There have already been several serious bike vs. vehicle accidents on those roads. There is a very strong case for building an off-road shared path from Marsden Bay to the Ruakākā Shopping Centre and then following this up with a network of cycle and walking trails.

We also need to complete the Waipu to Waipu Cove trail. While the trust formed for this task is well on the way to securing easements and funding to build a further three kilometres from McLean Rd to the Waipu Cemetery the Whangārei District Council has committed to building the final link from the cemetery to where the already built western section ends at Riverview Place. This needs to happen sooner rather than later. Leaving cyclists and walkers to negotiate that winding section of Cove Rd. around Riverview Place is irresponsible.

Last week I received a press release from the office of the Honorable Peeni Henare, Minister for Tourism. It listed 56 projects, which had received a total of \$14,334,907 in August 2023, from a Tourism Infrastructure fund. I scanned through to see if the Whangārei District Council had any projects in this list and there were none.

Funding was allocated to repair and build cycle and walking tracks all around the country. The Nelson Council won a grant of \$1,130,066 to provide safe pedestrian and cycle access linking the city to the Nelson Marina.

I am not sure when and where the next funding opportunity for shared path (cycle and walkway) trails will come from but we really need to have our eyes open and be on the lookout and to have our projects mapped out and ready.

Marilyn

WAIPU LOTTO & POST



Lotto
Postshop
Photocopying

Emailing
Newsagents
All stationery needs



The Centre, Waipu

Phone 432 0900

Strong support for cycleways in One Tree Point and Ruakākā

Continued from page 1

Photo by Geoff Spencer

part of a larger trail from Manga-whai to One Tree Point had been mapped by a consultant for the Northland Transportation Alliance. A difficulty here is that it takes cyclists across State Highway 15 and then along Marsden Bay Drive where there is currently no separation for cyclists from the narrow busy road.

Also this trail is on sand and would n

But the first priority is the linking shared pathway between Marsden Point and the Ruakaka Town Centre and a petition asking the Whangarei District Council to allocate funds in its 2024-2034 District Plan for this was circulated and signed by most of those present.

Jules Flight, Chairman of the Ruakaka Residents and Ratepayers Association and a member of the original planning group suggested that a trust be set up to work towards the establishment of the cycleway network.

Marc Forrester, the Development Manager of Marsden Maritime congratulated the people who had initiated the cycleway proposal. As well as Mr. Flight

the planning group included Stu Neal of the One Tree Point Motel and Olli Krollmann.

He said "This in an intergenerational project and would be a legacy for our kids and grandchildren. It will link our communities and be an asset for everyone to enjoy."



A log truck on Port Marsden Highway

He urged anyone with the skills to help build the trail to get in touch with the project leaders and offer assistance.

Copies of the petition are available for people to sign at the Ruakākā Bakery and the Marina Restaurant.

Concerns for cyclist safety right now

Peter Hope said while he fully supported the cycleway network proposal he was concerned about the safety of cyclists currently using Marsden Point Rd., One Tree Point Rd. and Port Marsden Highway

He asked if some signs could be put up asking motorists to share the road with bike riders.

Steve Gibson said the numbers of fluro jackets going past on bicycles outside his office window on Marsden Bay Drive scared him.

One woman asked if the speed limit could be lowered on Port Marsden Highway but Mr. Gibson said the port had paid a substantial amount towards the construction of this highway and he didn't think it would be reasonable to ask for a speed restriction to cater for cyclists.

Retired truck driver Keith Newey said bike riders needed to be aware that it is impossible to stop a fully laden log truck suddenly if a bike rider appeared in its path.

He asked that riders wear fluro jackets and said he had considered carrying a supply in this truck to hand out to those he saw without them.

"The last thing we want to see is a cyclists we hadn't spotted lying flat on the road in our rear vision mirror."

He said people using the road needed to be aware of how much visibility truck drivers had and offered "when the weather is a bit warmer" to hold a session where people could climb up into the cab of a truck to get a feel for this.

Two opportunities to meet election candidates

There are two opportunities for Bream Bay voters to check out the candidates standing in the Whangārei electorate before the General Election on Saturday 14 October.

The Ruakākā Residents and Ratepayers Association meeting will be held at 7pm at the Ruakaka Recreation Centre, Takutai Place, on Thursday 14 September.

As from Monday when the Bream Bay News went to print : Shane Reti for National, Angie Warren- Clark

for Labour, Rick Bazeley for the Greens, Gavin Benney for NZ First, Diana Burgess for Democracy NZ and ? for the Freedom Party had accepted an invitation to attend.

Hūhana Lyndon, Greens candidate for Te Tai Tokerau has also advised she will attend.

Then, a week later on Thursday September 21, Promote Waipu and the Waipu Residents and Ratepayers

Association will be hosting a meeting from 7pm to 9pm in the Waipu Presbyterian Church Hall at 45 The Centre.

On Monday 4 September Shane Reti for National, Angie Warren- Clark for Labour, Rick Bazeley for the Greens, Gavin Benney for NZ First, Diana Burgess for Democracy NZ and ? for the Freedom Party had accepted an invitation to attend.

OPEN HOME

One Tree Point 23 Key West Drive

4 2 3 2

Asking Price

\$995,000 Inclusive of GST

View Sat/Sun 12-12.45pm or by appointment

Jan Anderson Halliday 021 380 032 jan.anderson@bayleys.co.nz

MACKYS REAL ESTATE LTD, BAYLEYS, LICENSED UNDER THE REA ACT 2008

More than meets the eye...

Check out the video online to see the stunning outlook and clever design of this fabulous home, incorporating so much functionality into its footprint. An effortless blend of comfort and style, with four bedrooms and three bathrooms. The open plan main hub comprises of a stylish kitchen, lounge, and dining room plus an additional media room all opening onto the partially covered deck with PVC pull down screens, this home offers ease of living for everyone and backs directly onto the private golf course.

bayleys.co.nz/1060351

BAYLEYS

Unichem Orrs Pharmacy



Menopause

Every woman's experience of menopause is different. And whether you suffer from hot flushes, mood swings or sleeplessness, this "change of life" does not have to mean the end of your way of life. Menopause is the natural process of your periods becoming irregular and eventually stopping. This means your body has ceased preparing every month for pregnancy - your ovaries stop releasing eggs and your hormone production decreases. How do you know if you are going through menopause? The symptoms for menopause are varied and vast. You could experience any or all of the following symptoms:

- hot flushes • night sweats • irregular periods • loss of libido
- vaginal dryness • mood swings

Other changes during menopause may include fatigue, hair loss, sleep disorders, dizziness and weight gain. As bones can get thinner due to hormone changes, some women are also at risk of developing osteoporosis. Talk to your community pharmacist about managing the possibility of weakening bones.

Many women do not seek treatment for menopause but those that do often experience severe symptoms. Hormone replacement therapy (HRT) is the most common treatment and comes in the form of tablets, creams, patches and implants.

Menopause is generally manageable if you make a few adjustments to your lifestyle. Ask your community pharmacist for advice which may include:

- sticking to a health diet
- getting plenty of exercise
- doing weight-bearing exercise
- avoiding stressful situations
- getting enough sleep
- stopping smoking
- not drinking coffee, or exercising, before you go to sleep
- sleeping in a well ventilated room
- using lubricant during sex

It is also critical that you get support from your family and friends during menopause. Their help will assist you during this change in life. Menopause can be managed with the help of health professionals, talk to your community pharmacist about the appropriate treatment options for you.



LETTERS

Marsden Bay Drive urgently needs to be made safer for cyclists

I attended the meeting of interested parties held at the Marsden Fishing Club on 30th August which was arranged by Stephen Gibson from Marsden Maritime Holdings and a delegation from the Ruakaka Residents and Ratepayers Association committee.

It was great to see and hear the enthusiasm to link Ruakaka Village with Marsden Cove and One Tree point via a cycle / walking trail which did not have to be connected to the main highway.

Phil Halse, representing Whangarei District Council was very supportive of the project, however it appears that to get this project underway will take some time for planning and consents, not to mention the fact that this will also require funding which all takes time.

There are a number of cyclists who enjoy getting out on the local roads for some exercise or to commute to Ruakaka from One Tree Point/ Marsden Cove. However, getting there currently is a dangerous exercise if you are travelling via Marsden Bay Drive. The condition of the road could only be described as poor, with no shoulder on the south east side to enable a walker or cyclist safety from the number of vehicles using that road, particularly from trucks or if the vehicle is towing a boat.

It would be great to see if the WDC could immediately allocate some funding to have this piece of road upgraded before we see a tragedy occur. I have already witnessed at least 3 cars which have left the road and ended up in the open drain that needs a decent clean up.

In the 18 years I have been a resident in One Tree Point we have not seen a lot of input into this area from the council. Now could be a chance for them to acknowledge the rates generated by the new residents from Marsden Cove, The Landing, Kowi Lakes and La Pointe while we await the planning and financing of the cycle/ walkways to connect us to Ruakaka to have this piece of road upgraded to a safe level for all users.

Keith Harris
One Tree Point

Council negligent for leaving stormwater pipe unrepaired

Thanks for keeping the storm water outflow pipe at Te Kamo St, Marsden Village 'in the news.

In my opinion it is negligent of the council to have left this unrepaired.

Without the 'flap' on the old outlet, to prevent backflow, there is a risk of sand buildup blocking the pipe.

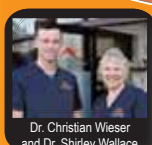
That leaves the village at risk of flooding if heavy rain is not able to drain from the streets quickly.

Wayne Huggard
Ruakaka



We are a primary care skin cancer clinic located in the Whangarei Town Basin. We focus on the early diagnosis and effective treatment of skin cancer in a friendly and welcoming environment.

- ✓ Full Body Skin Checks
- ✓ Dermoscopy Analysis of Moles
- ✓ Surgical & Non-Surgical Treatment
- ✓ No Referrals Needed
- ✓ Southern Cross Affiliated Provider
- ✓ Accredited Skin Cancer Doctors with the Skin Cancer College of Australasia



09 438 2188

131 Lower Dent St., Whangarei
admin@skincancerdoctors.co.nz
skincancerdoctors.co.nz



Letters to the Editor are welcome

Email them to: breambaynews@xtra.co.nz

Post them to: Bream Bay News,

547 Mountfield Rd. RD2 Waipu. 0852

or drop them off at the Waipu

Collapsing Kepa Rd sewer pipes difficult and expensive to repair

Sink holes due to some collapsing concrete sewer pipes appeared on some industrial sections in Kepa Rd. last month.

A shed on the Macsway property at 12 -14 Kepa Rd. was affected, slumping at one corner.

At Complete Concrete next door Seyrus Royals Davis pointed to a three metre deep hole with water at the bottom. A safety fence had been erected around it and Mr. Davis said the company has been unable to use its display yard since the hole appeared there.

Ian McCartney, owner of Macsway Scaffolding, said he was overseas when the problem arose and he missed much of the drama. He believes the pipes have been in place for at around fifty years as he and his father were advised to be aware of them when they built there in the mid 1980s.

He is pleased that the Whangārei District Council is replacing the pipes with a new plastic less corrodible product.

Andy Keith, Wastewater and Stormwater Operations Manager for the Whangārei District Council said he thinks the failing pipes are at least 40 years old.

"When the power station and surrounding village was built in the 1970s it had its own sewer treatment plant. In the 1980s this was converted to a sewer pump station when the outlying village area around Tamingi

Street was developed. The sewer treatment plant off Sime Road was constructed and wastewater from the whole power station area was then pumped to this new plant along with wastewater from the One Tree Point area."

He explained sewerage degrading in the pipes produces hydrogen sulphide gas, which forms sulphuric acid, and over time this has broken down and weakened the old concrete pipes.

The pipe that failed under the Macsway's yard serves the power station village area including the newer Tamure Place area. The line that failed under the Complete Concrete yard serves the Ruakākā South area including the town centre, Bream Bay College and the newer Ruakākā South pressure sewer area that was brought on line in 2013.

Mr. Keith said the repair is very difficult and expensive "compared to other repairs/replacements as the soil conditions in the sand are very challenging. Picture digging a trench on the foreshore watching it cave in a quick as you can dig it. Extensive dewatering and sheet piling is required."

He said the Council Waste and Drainage Department is currently "very carefully assessing all the lines in the surrounding area" so a replacement plan can be proactively developed.

Access problems for contractors sent to remove broken stormwater

Photo by Eric Woodward

Eric Woodward of the Ruakākā Village is wondering if this excavator left near the cyclone wrecked Te Kamo St beach entrance is an art installation.

He said, "Bearing in mind we learnt that orange road cones each cost councils \$1.50 per day they are out, what does an excavator cost Council sitting abandoned, each day. Perhaps the cost of a new DoC agreed stairway!"

He understands the excavator was brought to the beach two weeks ago to remove the broken stormwater outlet but was unable to get down the narrow pathway and across the steep eroded dune.

Unable to use the excavator the contractors brought in a small tracked, motorized wheelbarrow. However when this was filled with concrete it was too heavy to get back up the track and had to be taken down the beach to a less steep path.

The outlet has broken concrete around it and orange



safety fencing, which is getting a little battered with bits floating off into the sea.

The Department of Conservation has plans to build a sand ladder to replace the broken Te Kamo St stairway but is waiting on a supply of chain needed for this project.

**BREAM BAY
CURTAINS
BLINDS
AND SHUTTERS**

PH 0204 632 432
FOR A FREE IN HOME
CONSULTATION
CALL SUE

AVAILABLE 7 DAYS A WEEK COVERING
WHANGAREI TO MANGAWHAI, INCL KAIWAKA
BBCURTAINSANDBLINDS@GMAIL.COM

CALL SUE TODAY
0204 632 432

ATLAS

QUARRIES
CONCRETE

Thinking concrete but don't know where to start?

Think Atlas Concrete

- We quarry the aggregate
- We manufacture the concrete
- We site visit to advise the best options
- We give you the choice of mix and colours
- We give a choice of local placers for you to choose
- We manufacture concrete to your requirements
- We stand by our product, you stand on it

Atlas Concrete

Your First Call for Concrete

Ph: 0800 888303 - Brynderwyn

or 432 5030 - Ruakaka

Building in Whangareī, Kaipara, Far North

Hunter 164sqm

\$425,928 incl gst

Includes: plans, consent, kitchen, appliances, tinted double glazed windows, tiles, carpet, blinds, heatpump.

"Hi, I'm Wayne Pickerill, Managing Director and Project Manager for your new Fowler Home. Enjoy quality and all the benefits of dealing with an efficient, low overhead, nationwide company, where I will take a personal interest and be involved through to completion."

Wayne Pickerill
Managing Director

FOWLER
HOMES™

More designs at www.fowlerhomes.co.nz or visit our office at 63 Walton St, Whangareī. Phone Wayne Pickerill 438 4840

Thai Therapeutic Massage In Ruakākā

Reduce stress & anxiety Improves circulation & posture
Improve flexibility Enhances mobility
Ease back pain Inner peace, joy & self awareness

Mai is a qualified Thai Massage Therapist with over
15 years experience.

She is passionate about helping people move
and feel better within themselves

Mai has helped a huge range of people from all over the world
feel more comfortable and move more freely



Call Mai 021 0256 1928

Appointment Only



**STORAGE
BREAM BAY**
76 Waiwarawara Dr, Ruakaka 0171

Not Just Storage!

Conference Room
Commercial Kitchen
Onsite Separate Office

Enquiries Ph. 09 432 7732 or 021 432 701

email: storagebreambay@gmail.com
www.storagebreambay.co.nz

RUAKAKA RESIDENTS AND RATEPAYERS ASSOCIATION

The Ruakaka Parish Residents and
Ratepayers Association meets on the sec-
ond Tuesday of each month at 7pm in the
Ruakaka Recreation Centre, Takutai Place,
Ruakaka

WAIPU RESIDENTS AND RATEPAYERS ASSOCIATION

The Waipu Residents and Ratepayers Associa-
tion meets at 7pm on the last Wednesday of
each month in The Presbyterian Church Hall
45, The Centre, Waipu.

LETTERS

Thoughts on election 2023

Here we go again
Election time is coming
And this time it's prone to be
More disinformative than ever
Now that lying has become acceptable

We're mad, and we're angry
And deep inside we all know too well
That something is going horribly wrong
We don't know what to believe and who to trust
Let alone what to do and where to start
We're craving simple answers
To ever more complex issues
We're falling for them yet again
Roll it all back, lock them all up
Blame the other guy who's somehow different
Let loose the flood of abuse
From the anonymity of our keyboards

Actually, we know exactly what to do
We have all the tools we'll ever need
It's inconvenient, it's uncomfortable
Nobody wants to be the first to admit
How wrong we got it in the past
Our greed for bigger, faster, more
Three and a half times our fair share
When even too much is never enough
And every second word is growth

A while ago we got a glimpse
What life could be like
Then we wasted another crisis
On buying stuff and revenge travel
And selling houses to each other
Build back better became bounce back harder
Pre-pandemic levels within reach
We push it all to and past the limits
And then complain about the prices
Permanently unhappy again

The media keep us all in line
With the well-established tropes
The same five economists every week
With nine different opinions
Why this is good or bad or anything in between
And why we need more unemployment

Some of us say it's time for a change
Same old same old in a different colour
More roads to nowhere, more tunnel vision

More of the same that hasn't been working
We get to choose between Chris for our king
A two-horse race with dismal odds
No future either way, no chance to win

Change is coming anyway
Faster than we might think and like
A year ago there was no managed retreat
Now some of us are already begging for it
Pay us off, bail us out, let us go
We can't take it anymore

People under pressure don't do better!

So what if we provided the basics to everyone
Would that be worth paying a bit more tax?
Would that be worth sharing a bit more wealth?
Imagine the boost to our mental health
To our collective well-being
Doing better with less, so we all get more
In the safe green zone of the economic doughnut
Not out of bounds, not in the hole
No more jumping through countless hoops
Not having to fricking worry all the time
Could be the best investment we ever made
And might almost pay for itself

Or would we rather spend instead
On fences, walls and barbed wire
Security cameras and guards
Enjoy our freedom from behind bars
Protect our castles and trusts of gold
And keep the hangry mob at bay...

So is it about what's in it for me
Or are we rather in it for us?
Is it ok to just let it derail
Or are we getting back on track?
Do we take it over the top
Or do we take it back a notch or two?
The time to act is now
As it has always been

Olli Krollmann
One Tree Point

MAGIC TYRES
Large selection of used & new tyres
Car & Trailer Rims
Ph. 438 3534 103 Port Rd., Whangarei

He donated almost \$1million to develop the Waipu Golf Course - "Northland's hidden gem."



Mike Daniel, tries out the ceremonial seat, installed at the Waipu Golf Club to honour his almost \$1 million donation towards an irrigation system for the course

The Waipu Golf Club held a presentation last Wednesday and installed a memorial seat outside the clubhouse to thank Mike Daniel of Langs Beach for his donation of almost \$1million, which went towards the installation of an irrigation system at the golf course.

Mr. Daniel said the Waipu Golf Course is "a hidden gem". He is a long time resident of Northland and as a youngster spent his holidays at Langs Beach where he played his first golf at the Waipu course.

He said all the course needed was "a bit of love and care and investment."

"In a dry summer it was just like a desert. People holidaying here would come up to play a game of golf and they couldn't get their ball out of the sand."

He agreed to make the large donation on condition that the community and the club supported the project and came up with a third of the required capital. Club members and local people raised an additional \$420,000 for the project, which takes water from artesian streams running underground to keep the fairways green in summer.

Mr. Daniel is pleased with result.

"It's fantastic. People are coming up from Auckland. It's something for the whole district."

He said the location of the course, overlooking Bream Bay is unmatched anywhere in New Zealand.

However, last summer the problem was too much rain with water pooling and badly damaging one of the fairways.

Mr. Daniel believes that all the spring rain followed by a period of dry weather made the sandy soil compact forming a hard layer that prevented water from percolating through. Then with the heavy rain later in the summer ponds formed on the surface.

The Waipu Golf Club has lodged applications with the Northland Regional Council and the Department of Conservation to install a drainage system to prevent this happening again.

This work will be expensive but the repair to the damaged fairway was also expensive.

Mr. Daniel said, "It's like an insurance policy. We hope we don't have to use it but it's there if we need it."

**Phone the BREAM BAY NEWS 027 432 0070
or email: breambaynews@xtra.co.nz if you know of
something interesting going on in Bream Bay.**

BIG RED

TRUCKING

Owner /Operator Duncan Mackay



GENERAL CARTAGE SERVICE

Metal / Topsoil / Sand / Manure / Hay / Silage



WATER

Prompt Delivery And Reliable Service.

Healthboard Approved Drinking Water Carrier.

Call 021 070 8211

THE NEXT PUBLICATION DATE

of the Bream Bay News will be Thursday 21 September

The deadline for all copy is 4pm on

Wednesday 13 September



The Vet Centre

The Vet Centre offers a discount to Gold card holders with their companion cats or dogs.*



**Celebrating our new Ruakākā clinic
with a 10% discount on pet food,
pet toys and treats***

📍 385 Marsden Point Road, Ruakākā

☎ 09 433 4916

@ ruakaka@thetvetcentre.net.nz



Mon to Fri 8am - 5pm, closed Sat & Sun

Offer applies at Ruakākā clinic only and does not include clinical or medical services. Special 10% discount applies for the period of 7-15 September 2023 inclusive. Gold Card holders receive upon displaying Gold Card's Loyalty scheme, 2% discount on selected food, 10% discount on clinical consultations and revisits, annual vaccinations and flea and worm treatments, and 20% discount on all cat and dog accessories and treats. Conditions apply. Not to be used in conjunction with any other promotions. After hours excluded.



The Vet Centre

Maungaturoto | Waipu | Mangawhai | Ruawai | Ruakākā

Maungaturoto 09 431 8318

Mangawhai 09 431 4535

Ruakākā 09 433 4916

Ruawai 09 439 2506

Waipu 09 432 0693


We care, pets, people, community

www.thetvetcentrenorthland.co.nz

Brought to you by **Promote Waipu** *"Where living is"* **WAIPU** *"Where living is"*

MEET THE CANDIDATES

WHANGAREI ELECTORATE



THURSDAY 21 SEPTEMBER 2023
7PM - 9PM

Waipu Presbyterian Church Hall
45 The Centre, Waipu

Your chance to hear from candidates and ask your questions.

BECAUSE YOUR VOTE MATTERS

For more information about enrolling and voting:
• visit vote.nz • call 0800 36 76 56
Information about enrolling and voting is available in multiple languages at vote.nz

Opp shop volunteers arrive to some big messes when they turn up to work in the morning



The volunteers who look after the Waipu Anglican Church Op shop have had a few messes to clean up when they arrive for work lately.

Bags of clothing and other goods left at the shop entrance have been rifled through and their contents strewn all over the deck.

Volunteer Sally Haigh described how on one occasion someone had just stepped out of the jeans they were wearing and redressed themselves in items from a bag that had been left on the Op Shop steps.

"I suppose if they really needed those clothes that is OK but it is bit much for us old girls to have to sort it all out."

Sally said if it has been raining overnight the strewn items need to be disposed of as no-one has time to take them home to wash and iron.

She asks that donors bring their goods to the shop during its opening hours which are 10am to 4pm from Monday to Friday.

Sally said having a bin outside to collect out-of-hours donations is not a solution as people would deposit rubbish in it.

Waipu Rugby Squash Club presents

WAIPU TOUCH 2023

Thursday 19 October - Thursday 7 December
at the Caledonian Park, Waipu

JUNIOR MIXED TEAMS	SENIOR MIXED TEAMS
➢ 4pm – 6pm	➢ 6pm – 8pm
➢ \$10.00 per school student per team	➢ Super Social grade \$200.00 per team
➢ Year 1 – 3 grade	➢ Social grade \$200.00 per team
➢ Year 4 – 6 grade	• 7-a-side (minimum of 2 females on field)
➢ Year 7 – 8 grade	• 30 minute games
• 7-a-side (minimum of 2 females on field)	• Each team must provide a referee each week
• 30 minute games	• Each team must provide a Touch ball for their own game
• Each team must provide a referee for their own game	• Minimum age for senior grade is 13 years old
• Each team must provide a Touch ball for their own game	• Fees to be paid in full on Thursday 26 October 2023
• Fees to be paid in full by Thursday 26 October 2023	• This is a fun, family friendly, social event.
• Children 8 years and under must be actively supervised by a caregiver 14 years of age and over	• Alcohol is not permitted on Caledonian Park (only upstairs in clubroom)

Register team with Lisa Jones 021 163 0237 or
Email: waiputouch@gmail.com



Recent winners of the Holiday Parks NZ Spirit of Hospitality Award 2023 and the GOLD Sustainable tourism business award from Qualmark for our environmental practices.

Do you need a break or a holiday to look forward to? Book your stay today in our range of cabins and camp sites, and mark that deidcated time away in your calendar!

☎ 09 432 0410 ✉ info@campwaipucove.com 🌐 www.campwaipucove.com



holiday parks
NEW ZEALAND
AOTEAROA

Spirit of
Hospitality Award
Winner 2023
Camp Waipu Cove



Travelers'
Choice
2023



QUAL
MARK
GOLD

★ ★ ★ ★ PLUS

— LIGHT
FOOTPRINT —

— SAFE
& SOUND —

— WARM
WELCOME —

Police Report



Secure your trailer

Trailers appear to be hot currency for thieves once again. Three trailers have been reported stolen in the past fortnight from the Ruakākā and One Tree Point areas. Sergeant Simon Craig, Officer in Charge with the Bream Bay Police, urges people to take extra care with their security.

Six burglaries in one morning

In the early hours of Saturday 26 August burglars broke into six different business premises from Kaiwaka to Ruawai. A stolen car used by the offenders was recovered in Dargaville and Police

Road accidents

There were seven minor vehicle crashes in the past fortnight. Mostly these were single vehicle accidents. On Wednesday 30 August a car ended up nose down in the drain on Mountfield Rd after its driver lost control and drove up the bank.

Also on Wednesday 30 August, a driver got too close to the edge of the road when he pulled over at the corner of Uretiti Rd. and Nova Scotia Rd. The vehicle plunged down the bank into a drain. The driver was not seriously injured but needed assistance to get out of his vehicle.

Drink driving

• On 26 August at 7.10pm a vehicle was stopped on Cove Rd. When breath tested the driver returned a result of 373 micrograms of alcohol per litre of breath - the legal limit for drivers over the age of 20 being 250 micrograms. As a result a 34 - year - old Mangawhai man received an infringement notice.

• On 2 September at 7.20pm Police stopped a vehicle on One Tree Point Rd. and breath tested its driver who returned a reading of 507 micrograms of alcohol per litre of breath. A 27- year - old Auckland man will be appearing in the Whangārei District Court as a result.

• On Wednesday 23 August at 6.30pm, a vehicle was stopped by Police on SH1 at Mata. The driver, a 52 - year - old Whangārei man opted for a blood test, which returned a result of 249 milligrams of alcohol per 100 millilitres of blood. The legal limit is 50 milligrams. As a result he will be appearing in the Whangārei District Court on a drink driving charge.

Fourteen family harm incidents

Bream Bay Police have dealt with 14 family harm incidents in the fortnight Monday 21 August to Monday 4 September.

WHITTAKERS
funeral home



09 988 9049

whittakersfunerals.co.nz | admin@whittakersfunerals.co.nz
25 Kapa Road Ruakaka 0171 | PO Box 241 Ruakaka 0151

Ruakaka Stationery & Gifts



Ruakaka Town Centre

Shop local for all your needs:

Stationery, Books, Toys, Magazines

Greeting Cards, Clothing,

Gifts & Souvenirs

Phone
432 8104

New Zealand Post

Open Saturday until 7pm.

PETFOOD: FREE HOME DELIVERY

RAW FOOD (FROZEN) . DRY (KIBBLE) . FREEZE-DRIED . CANNED . TREATS . CHEWS



FREE HOME DELIVERY TOWN & RURAL

Ruakaka, One Tree Point, Mangawhai, Kaiwaka, Paparoa, Maungaturoto, Whakapirau, Port Albert, Wellsford, Te Arai, Tomarata, Leigh, Omaha, Matakana, Kaipara Flats, Snells Beach, Algies Bay, Warkworth.

GUARANTEED FROZEN

We transport raw food by freezer truck and it is delivered inside a freezer bag. We txt you on arrival so you know it is there.

VISIT OUR MOBILE SHOP

Mangawhai Market every Saturday morning and the One Tree Point Market on the 3rd Sunday of each month.

FOOD FOR DOGS . CATS . BIRDS . HENS . DUCKS . RABBITS . GUINEA PIGS . FISH . REPTILES



SUPPORT LOCAL.

BUY YOUR PET FOOD FROM BOB & BEN.

Steve 027 292 4891

www.bobandben.co.nz

New store supports local food producers

"We hope this also encourages visitors to come and view Waipu and the surrounding area as the fertile, health focused area it is."

By Peter Gibbs



Jennifer and David Rodrigues in their new Waipu store

David and Jennifer Rodrigue's new shop Origin Northland opened on cue last month at 51 The Centre Waipu.

The couple who operate a prize winning goat farm and creamery in rural Waipu have been members of the Roving Rural Market with other local growers and producers.

They said, "We all wanted a place to retail our products that would serve, package, and present them as we ourselves would do at the markets, making sure they arrived home looking just as gorgeous as they did when the artisan producer made them."

Jennifer recalls the days of trying to find retail space in the village of Waipu, nothing was available or it wasn't just right. David suggested they build. The section at 51 The Centre, Waipu was purchased and then began the design and build stage. During this time, the couple had the section tidied up to be used to host the market for several months in a row last winter and spring as the idea of the market roving from farm to farm became less viable with all of the rain.

They aim to source most of the products on the shelves of their new store from Northland but are not too rigid about this.

Jennifer said, "We will go further afield throughout the country to bring Waipu shoppers what we think is the "best of show" for its category with every product having a point of difference.

Back on the farm, they are also completing an expansion of the cheese processing room. The expansion is much needed but isn't on a massive scale. "We had to make a decision as to just how big we take our paddock to plate business with demand increasing around the country after each year's NZ Specialist Cheesemakers' Champion of Cheese Awards. We decided to keep it a small family business and make the cheese available first and foremost to the local community through Origin Northland. We hope this also encourages visitors to come and view Waipu and the surrounding area as the fertile, health focused area it is."

Origin Northland has a wide range of products: vegetables from market garden Left Field of Mountfield Rd., Waipu grown bananas and avocados, organic meat, frozen blueberries from Maungatapere, chocolates and cakes from the Waipu Chocolate Barn.

Customers are welcome to bring their own containers to reduce waste. Store manager, Mini Winters said the shop is still on the lookout for locally grown or produced products.

The shop is open Tuesdays, Wednesdays and Fridays from 10am to 4pm, on Thursdays from 10am to 6pm on Saturdays from 10am to 3pm and soon also on Sundays from 10am to 2pm.

Five more businesses are due to open in the building at 51 The Centre this month.

**RUAKAKA
SAFE
STORAGE**

99 MARSDEN PT ROAD, RUAKAKA
92 Units from 6 x 3 to 1 x 1
Each unit individually alarmed and monitored
Electrified security fence
Ph. 0508 273 262 or 0275 310 788
CLEAN - DRY - SECURE

**BREAM BAY
STORAGE**

INSIDE/OUTSIDE storage at 50 Cove Rd., Waipu

Free phone. 0800 432 135
enquiry@breambaystorage.co.nz
www.breambaystorage.co.nz

Camp Waipu Cove - awarded for its good environmental practices

Years of work repairing the dunes at Waipu Cove played a big factor in Camp Waipu Cove recently being awarded Gold Sustainable Qualmark status by NZ's tourism quality assurance agency.

At Waipu Cove the dunes have protective fencing, are planted with appropriate native species and are kept clear of weeds. There are defined walking tracks down onto the beach to keep foot traffic off the



Lucy and Anton Trist, Managers at Camp Waipu Cove

fragile plantings. In 2017 the Waipu Cove project was judged the best in New Zealand by the Dune Restoration Trust.

The camp now asks its guests when booking on its website if they would like to donate to the dune restoration program. To date 150 people have taken up this option and money raised has been spent on maintaining the dunes.

Other measures the camp has taken towards sustainability include the installation of 166 solar panels reducing its power consumption by over 26% Manager Anton Trist said, "Basically while the sun is up we are producing solar power and the camp uses very little power from the grid. Excess power produced is sent back to the grid for a rebate."

Lights in camp facilities have been changed to LED and all are on sensors so switch off when not in use. The camp has also moved away from single usage plastics in all its cabins, using refillable Forest and Bird Society products, cartons for milk and compostable rubbish bags.

There is also a camp community herb garden where campers can pick what they want and use for their cooking.

Major donations have been made to local projects: \$10,000 to complete the Waipu to Waipu Cove Cycle/walkway and \$20,000 to the Waipu Coastal Trail to get this up and running before the start of last summer. Camp Waipu Cove is aiming to have a carbon audit soon with the intention of becoming recognized as a carbon zero business.

Camp Waipu Cove is also celebrating a recent win at the New Zealand Holiday Parks conference where it was judged the winner of the Spirit of Hospitality Award.

Anton said this is a big achievement as the camp was up against some of the big Top Ten Holiday Parks.

"We have been nominated before so when we didn't end up winning so we are particularly proud of winning this time around.

"Of course its not just Lucy and me but all the people working here who have won the award."

LOCAL PEOPLE READ THE
BREAM BAY NEWS
IT IS AN EFFECTIVE
PLACE TO ADVERTISE

MARSDEN POINT HIGH TIDES

	AM		PM	
Thu 7 Sept	12.39	2.5	1.13	2.5
Fri 8 Sept	1.32	2.4	2.10	2.4
Sat 9 Sept	2.28	2.3	3.12	2.3
Sun 10 Sept	3.29	2.2	4.13	2.3
Mon 11 Sept	4.30	2.2	5.09	2.3
Tue 12 Sept	5.27	2.2	5.59	2.4
Wed 13 Sept	6.18	2.3	6.43	2.4
Thu 14 Sept	7.03	2.3	7.22	2.5
Fri 15 Sept	7.43	2.4	7.59	2.5
Sat 16 Sept	8.21	2.4	8.34	2.5
Sun 17 Sept	8.58	2.5	9.09	2.5
Mon 18 Sept	9.35	2.5	9.46	2.5
Tue 19 Sept	10.13	2.5	10.23	2.5
Wed 20 Sept	10.53	2.5	11.04	2.5
Thu 21 Sept	11.36	2.4	11.48	2.4
Fri 22 Sept	~	~	12.24	2.4

Spring gardening at the Bream Bay Community Trust

Norma Scobie who looks after the community gardens behind the Bream Bay Trust in Takutai Place, Ruakākā is holding a spring planting workshop at the trust on Friday morning 22 September.

The session will begin at 10.30am in the trust's hall with a discussion and then participants will move out to the gardens to do some planting there. All are welcome.



Real Locals, Real Value

The Bottle O Marsden
11/30 Rauiri Drive,
One Tree Point
Phone - 09 432 7045

SPECIALS

Canadian Club 12pk Cans Dry & No Sugar 7% - \$29.99

Gordon's 12pk Cans Range \$27.99

Steinlager 24pk bottles - \$42.99

Pils 10pk Range - \$27.99

Canadian Club 1lt Whiskey - \$49.99

Jameson 1lt Whiskey - \$64.99

Gordon Gin 1lt \$45.99 or 2 for \$88

Brown Brother Australian Tawny \$24.99

Dewars 1lt \$45.99 or 2 for \$88

Smirnoff Vodka 1lt - \$45.99 or 2 for \$88

Villa Maria Cellar Selection Range - \$15.99

Lindauer Classic Range \$14.99

Rabbit Ranch Pino Noir \$24.99

Ned White wine range - \$16.99

Oyster Bay Excl Pino Noir - \$17.99

Mud House range excl pino noir \$14.99

Heineken 12pk bottles - \$27.99

Lion Red, Speights, Speights Ultra 24 pk bottles - \$39.99

Please come and visit the store for more winter specials. These specials are valid until 17/09/23 or until stocks last

Summer tennis season begins

Play tennis and increase your life expectancy

By Paul Ramsay

Towards the end of last summer, I found an article that indicated tennis can increase life expectancy by 9.7 years. Badminton (6.2 years) and soccer (5 years) come in 2nd and 3rd. This study done by Copenhagen City Heart Study (CCHS) and published in *Mayo Clinic Proceedings* followed close to 9,000 people over 25 years and found that playing tennis added 9.7 years to their lives. There was a clear correlation between social interaction (connecting with others and maintaining strong relationships) and longevity. Also, the physical demands and challenges of playing tennis (and most racquet sports) along with balance and mental strategy requirements of the sport, contributed to positive life-enhancing factors as well. The takeaway? If you haven't picked up a racquet or found your way to a tennis court, it's not too late - and you'll get years back on your life! On that happy note the summer tennis season starts in Waipu at 6pm on Tuesday evening on 12 September with come and try nights on 19 and 26 September as well. If you are keen to play, make sure you come along and let the match committee know you are keen to commit to regular Tuesday play. We cater for all levels in our club competition and you don't have to be an expert! If you want to start earlier, provided it is not raining winter tennis continues on Tuesday nights at 6pm until then. After these three nights' players will be put in graded teams up until Christmas for our pre-Christmas competition. This competition will start about October 3. Ladies night will start at 6pm on a Wednesday night on October 4.

Remember to check our Facebook page for what is going on at the club and who put their hands up to help out on the committee.

Bringing the Takahiwai Maori Committee out of recess

The Takahiwai Maori Committee, which is currently in recess, was formed on 10 November 1977 through the New Zealand legal system's Maori Land Court and the land and buildings known local as the old Takahiwai School buildings and recognized by the Court as Sections 1 and 2 and Block 11 Ruakākā Survey District was vested with this committee.

At the same time the Court vested a remaining portion of this land with the original owners and the land was deemed to be Maori Land.

On 27/11/1979, the Maori Land Court set aside the land as a Maori Reservation for the "Purpose of Recreation and as a sports ground in association with Takahiwai Marae to benefit the Maori community of Takahiwai."

Mostly, the buildings have been used for accommodation and the property as a maara kai-food garden.

The original Trustees were Toko Pitman, Grant Pirihi, Henare Pirihi, Dick Paki, Percy Johnston Honetana, Barney Scott, Wi Teira Pirihi, Toti Del Epiha, Dawson Rata, Flora Harding and Ngawati Maki.

Following several months of correspondence between Dr. Mere Kepa, the local Maori Committees, Takahiwai 9A Marae Reservation Trustees and Committee, the Triennial Election Committee, the New Zealand Maori Council, and the Minister for Maori Development of New Zealand, the process to take the original Takahiwai Maori Committee out of recess has been commenced. Consequently, the Triennial Election will be held on Sunday, 1 October 2023 to approve the new members, namely Mere Kepa, Patrick Hilton, Corinthia Kepa, Hiria Rata, Diane Kepa, Davina Duke, Lynda Harris and Tamihana Paki. Leah Marie Wright of Whangārei and Donna Hall of Wellington will be in attendance to help with the election. The Committee will then proceed with organising a Community Arts Hub at the former Takahiwai School led by the internationally renowned artists the sculptor Davina Duke, sculptor and potter Lynda Harris.

Northpower

Latest news & updates from around your Network

Are your service lines a safety risk?

The power line that runs from the street to your house is called a **service line**. It can be overhead or underground.



Who is responsible for the service line?

Property owners are responsible for the powerlines, poles and underground cables that supply electricity from our network to their property. In most cases the service line starts at the property boundary.

Unsafe service lines

We regularly carry out safety inspections on our network and if we find any unsafe service lines, we'll contact you and let you know what work is needed to make them safe.

Find out about unplanned outages

If you are experiencing a power cut go to northpower.com (on your mobile device) to check the latest information and updates on outages.

If your outage is not showing on the website, please call **0800 10 40 40**.

For large outages we also post the information and updates on our Northpower facebook page.

It is a good idea to regularly check your service line and poles. If you are concerned, call Northpower or your electrician to assess the need for the repairs before the situation becomes dangerous.

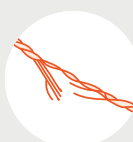
Trees in your service line

We keep trees clear from our network power lines, but property owners are responsible for their own service lines. Give us a call and we can help arrange a free disconnection to stay safe while you're maintaining your trees.

Other things to look out for

If your service line has leaning poles, low hanging lines, fraying, nearby trees, crooked crossarms or is showing signs of damage, phone Northpower on **0800 66 78 47**.

Here is what to look out for:



▲ Frayed or sagging lines break easily, especially in high winds.



▲ Look for signs of rotten wood on crossarms. Check if your poles are rotting at the base.



▲ Keep trees away from powerlines. They can cause anything from flickering lights to a total outage.



▲ Check the point where your service line enters your house. Is the line old or frayed?

You are responsible for the safety and maintenance of your service line.

Waipu Lions Club celebrates many years of service

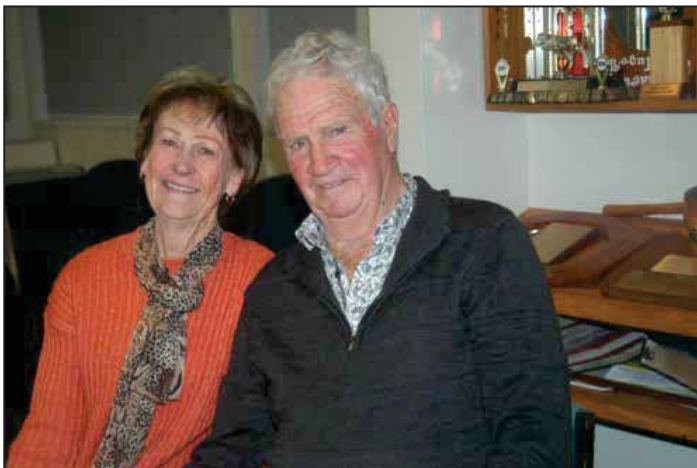
Past and present members of the Waipu Lions Club and members of the local community enjoyed a celebration dinner at the Waipu Fire Station on Saturday night 26 August to recognize the long service milestones of Lions John Finlayson (45 years) and Malcolm Norton (10 years).

Other long serving members past and present were also celebrated– Dick Pivac and his wife Jan – 44 years, Gary Sandford 36 years, Peter Blanch 39 years, Dave Brown – 16 years and Lorraine Murray, whose late husband Barry had served with the Lions for 20 years.

Late long serving members Dick Scotland and Terry Jarrett were remembered and honoured with a talk and slide presentation.

Juanita McGoldrick, who had organised the dinner, said the Lions members present had put in an accumulative 600 years of service to the community.

Morris Somner, himself a long time Waipu Lion, said after attending a Waipu Fire Brigade celebration Lions members present had decided that the Lions Club could improve on the way it recognized and thanked its members for all their hard work. People who regularly support the club's activities were also acknowledged and thanked at the celebration. These included Lyn and Steve Jones who in their many years as contractors for the Waipu Rural Delivery distributed leaflets on behalf of the club, Marilyn Cox who advertises Lions events in the Bream Bay News and Janet Bradley and her grandson Ethan Carroll and Patrice and Paul Cowpland, who although not Lions members are regular helpers at Waipu Lions events.



Jan and Dick Pivac have given 44 years of service to the Waipu Lions



Peter Blanch has been a Waipu Lion for 39 years.



Photo by Debi Walters- Brown

John Finlayson has the badge marking his 45 years of service with the Waipu Lions pinned onto his lapel by his son Gerald. The container of salad on the table has a special significance. It was presented to John in remembrance of the time he had helped to organise a Lions' dinner and had asked each of the attendees to bring along a bowl of potato salad



Malcolm Norton receives his ten years service badge from Lions Northland District Governor Peter Henderson

**Phone the BREAM BAY NEWS 027 432 0070
or email:breambaynews@xtra.co.nz
if you know of something interesting going on
in Bream Bay.**

WHAT'S ON IN BREAM BAY

- **RUAKAKA RACES** Next on Saturday 9 September The .Alibabas Flying Carpet kerikeri Cup. Free entry. 11am -5pm.. The Ruakākā racecourse is located at the end of Peter Snell Drive
- **ENTERTAINMENT AT THE WAIPU CITIZENS AND SERVICES CLUB** Saturday 9th Sept Featuring Dennis Marsh and Brendon Dugan show starts 7.30 Tickets \$30 available from the club
- **WAIPU BOUTIQUE SUNDAY MARKET** Next on Sunday 10 September . From 9am to 1pm in the Coronation Hall
- **MEET THE CANDIDATES FOR WHANGAREI IN THE UPCOMING GENERAL ELECTION** On Thursday 14 September from 7pm upstairs at the Ruakaka Recreation Centre, Takutai Place, hosted by the Ruakaka Resident and Ratepayers and then on 21 September at 7pm in the Waipu Prewbyterian Church Hall, 45 The Centre, hosted by Promote Waipu and the Waipu Riding Residents and Ratepayers.Association.
- **ONE TREE POINT ARTISAN MARKET** Next on Sunday 17 September Fundraising for Whangārei Hospital Children's Ward. Sunday 18 June from 9am-1pm. One Tree Point School quadrant and field.
- **NORTHLAND CALEDONIAN PIPE BAND** and friends. An evening of celtic music and entertainment. Saturday 30 September 7pm - 9.30pm. In the Waipu Celtic Barn. Tickets available at Trybooking or from Harcourts, Waipu.
- **WAIPU MUSEUM** 36, The Centre, Waipu. Open seven days 10am- 4pm .
- **THE KAURI MUSUEM.** . The Kauri Museum is open 9am-5pm every day except Christmas Day. 5 Church St., Matakoho. See more at www.kauri-museum.com

Bream Bay College Steel Pan band records a first EP



The Panimals

Bream Bay College's steel pan band The Panimals has recorded an EP. The collection named *Steel Soup* has some of the bands most popular pieces: Moondance, Billie Jean, Under the Sea, Master Blaster and Toxicity and the recording can be found online at <https://gyro.to/SteelSoup>. They are also on: Instagram, Facebook, Youtube and Tik Tok.

Niel de Jong from Hammerhead Productions recorded, mixed and mastered the project using Bream Bay College's facilities.

Music teacher Scott Brown said the experience "was exciting for the students, particularly tracking overdubs and adding different layers of percussion.

A set of steel pan drums had been purchased for the school by a previous music teacher but when he moved on the drums were left unused in a cupboard for a number of years until in 2015 Leticia "Tish" Viljoen, an Auckland based steel pan band enthusiast ran a workshop at the college.

"This kick started pan for our school and we set out to challenge how far the students could take it." Mr. Brown said.

The current Panimals line up consists of: tenor players - Connor Williams, Gabriella Uphof and Larissa Tanuvasa. seconds players - Levi Williams and Harlyn Abraham cello players - Adara Lunjevich and Bailey Whitelaw, bass - Kaiser Jacoby and drums: Cohen Morgan-Webb

Mr. Brown said, "The Panimals are the soundtrack of the heart of school during morning tea and lunch break. They are excellent school ambassadors and perform in the community when they can."

The band is soon to set out on a short tour of Tamaki Makaurau, including holding their EP release show at the Ponsonby Social Club on September 7 and busking and performing at Auckland schools.

Northland Caledonian Pipe Band presents...

A Scottish Bonanza

An evening of celtic music and entertainment with
NorthCal Pipe Band & Friends

7.00 - 9.30pm Sat 30th September 2023
Celtic Barn, Waipu
Tickets \$25 pp available on Trybooking and locally at Harcourts, Waipu

NORTHLAND CALEDONIAN
NORTH CAL
PIPE BAND

As seen on Grand Designs 2019

COASTAL CONSTRUCTION PROJECTS

0274 320 007

REGISTERED MASTER BUILDER QUALIFIED TRADESMAN CARPENTERS MARCUS@CCP.NZ WWW.CCP.CO.NZ

SITUATIONS VACANT

Waipu Volunteer Fire Brigade needs you !

Recruitment for Waipu Volunteer Firefighters/ Operational Support is NOW OPEN!

Waipu Volunteer Fire Brigade is looking for guys and gals to join our close-knit team who are passionate about helping their community in a time of need.

Being a Firefighter is an amazing way to give back to your community and be part of an amazing supportive team at the same time.

For more information pop on down to the station on a Monday night from 7:30 to have a chat with our team or phone our Chief Fire Officer, Alan Vaile on 021 409 442 or send us a message on our Facebook page.

SENIOR PREMIER RUGBY COACHING POSITIONS - Head Coach and Assistant Coaches

NORTHPIKE WAIPU RUGBY SQUASH CLUB INC

The Northpine Waipu RSC Club, est 1876, is one of NZ's oldest and well-established rugby clubs. **In the past six seasons, the club has made the Northland Premier final four times and has won the competition twice.** Northpine Waipu RSC has a supportive committee and management team, we pride ourselves on providing players and coaches with a pathway to higher honours and we have long-standing and loyal sponsors and supporters.

We are seeking expressions of interest from those who are passionate about bettering players on and off the field, and who enjoy contributing to a proud rugby club and community. While recent senior coaching experience would be beneficial, that requirement should not deter those who are passionate about the game and feel they can make a positive difference to our club – all applications will be considered, and individual support will be provided for the successful applicants.

To register your expression of interest please email Steve McClure mcclures@xtra.co.nz



- ❖ Chemical and non-chemical house washing
- ❖ Window and house cleaning
- ❖ Painting and staining – exterior house, decking and fences
- ❖ Water blasting - decks, driveways and courtyards
- ❖ Clean guttering and downpipes
- ❖ Pest control and spider spraying
- ❖ Tree trimming with extension saw

Phone now for a **FREE QUOTE**

REVITALISE ❖ PRESERVE ❖ PROLONG ❖ MAINTAIN

TONY 021 196 2949 OR MELISA 021 075 6770

ULTIMATE CARE RANBURN - CAREGIVERS WANTED

We have a Full-time Caregiving opportunities available in our friendly care facility located in Waipu.

If you are reliable, take pride in what you do, can work rostered shifts, and want to work with the elderly.

APPLY TODAY by sending your CV to:
admin.ranburn@ultimatecare.co.nz

On the job training is available.

WANTED

A PERSON TO LOOK AFTER AND MAINTAIN A COLLECTION OF CLASSIC VEHICLES. Old school mechanical knowledge needed. Flexible working hours. Full or part time. Please contact Dave 021 947 710

More classified advertisements on pages 18 and 19.

TRADES & SERVICE DIRECTORY Ph 09 432 0209

Bream Bay Tax

Tax
Accounting
Business support

Free first consult.
Fixed price packages
Supporting Bream Bay businesses

Robb MacKinlay 027 540 7859
robb@breambaytax.nz www.breambaytax.nz



BARFOOT THOMPSON &

I Love Selling Bream Bay!

Angelique Hartnett
Coastal & Lifestyle Sales / AREINZ
0274 356 411 / 09 435 5914 P
a.hartnett@barfoot.co.nz E

WhiteWash

Low pressure house cleaning

- Pest control
- Window cleaning
- Roof cleaning
- Gutter cleaning

Murray White

027 452 2430

murray.whitewash@gmail.com

Spa & Pool chemical sales
Free water test
Valet service available



Poolside Marsden Cove

**Spa pool
Displays
In store now**



16 Waiwarawara Drive
Ph. 09 393 7755

**Davey
Water Pumps
Sales and Service**



www.poolsidemarsdencove.co.nz

TRADES & SERVICE DIRECTORY

Ph 09 432 0209

NORM FAGO
OWNER / OPERATOR

Act Now
Car Rentals

M: 0274 362 480
Nz Freephone: 0800 362 480
E: info@actnowrentals.co.nz

From \$45 per day - Min 4 days
Based in Ruakākā

Ph: 09 432 0123

BREAM BAY GLASS

FOR ALL YOUR GLASS NEEDS



Mob: 0274954548

AMC
AUTO MOBILE GLASS

FAST WINDSCREEN REPLACEMENTS & CHIP REPAIRS

- Mobile service or come to our workshop
- Ultra competitive pricing. • Insurance claims welcome.
- Windscreen replacement in under an hour.

Phone Conrad on 022 036 2916
2/17 Gumdigger place.

BRADLEY
EARTHWORKS

- POND CLEANING • DRIVEWAYS • RACEWAYS
- LAND CLEARING • TREE REMOVAL • ROADING AND MORE!

CALL ME TODAY FOR ALL YOUR EARTH & TREE WORKS
PHONE ROY 027 374 5090 WAIPU

ABSOLUTE CONCRETE

www.absoluteconcrete.co.nz
CULVERT PIPES
Spun and reinforced
Crane truck delivery
Drainage Merchant - Hardware Store
Email: sales@absoluteconcrete.co.nz
Phone (09) 431 2211
KAIWAKA

MACSWAY
SCAFFOLDING LTD

WE BUILD, HIRE, ALLOY MOBILES, TEMPORARY FENCING, & SHRINKWRAP

Ph: 09 432 7643 • 0274 726 772
macsway@xtra.co.nz Kapa Road, Ruakaka

O'MALLEY CONTRACTING LTD | CONCRETE SPECIALISTS

- FOUNDATIONS
- HOUSE SLABS | STAIRS
- RETAINING WALLS
- DRIVEWAYS | CARPARKS
- EXPOSED AGGREGATE
- COLOURED CONCRETE
- COMMERCIAL | RESIDENTIAL
- LICENCED BUILDING PRACTITIONER

Free No Obligation Quote

FAMILY OWNED & OPERATED

021 2200 198 | OMALLEYCONTRACTING.COM

Bream Bay Concrete Ltd.

Free Quotes • Reliable Service • Quality workmanship

- Concrete pads
- Shed floors
- Pathways
- Home floors
- Driveways
- Concrete cutting
- Excavation works
- Retaining walls
- Paving fences
- Profiles for homes & sheds
- Subfloors & boxing

Mark Royals Ph: 432 0107 Mob: 0274 433 130

BREAM BAY ELECTRICAL

Wiring Safe Homes And Businesses Throughout Northland

RESIDENTIAL COMMERCIAL INDUSTRIAL

0800 223 555 • 027 35 33 555
www.breambayelectrical.co.nz

24H SERVICE

BAYSIDE CONTRACTORS

RESIDENTIAL EARTHWORKS • HOUSE SITES
DRIVEWAYS • TRENCHING & DRILLING

Contact Shane
027 3019 480
admin@baysidecontractors.co.nz

TC ENGINEERING
Metalwork Specialists

Stainless and Aluminium Welding and Bespoke Fabrication




Gates and outdoor furniture. Marine repairs and fabrication.
Onsite welding for farm repairs and modifications.
www.tcengineering.nz 021 145 7075 or 021 203 0309

Tractor Mulching

100hp tractor with high bodied yllails, mulcher, park finishing mowers, slashing Gorse & blackberry spraying

Also mechanical tractor repairs

Phone Bain McGregor
0274 979 013
or 09 432 0527



Grant McLean
Stock Agent for Bream Bay

Ph 021 7758 48
Email: skincarla@xtra.co.nz

All aspects of stock sales including:
• dairy beef • bobby calves • store cattle • live export heifers
• sheep • pigs • supplying stock for slaughter

Also caters for small block holders.

Carrfields **Livestock**

Ruakaka Motors

Mechanical and Auto Electrical Repairs and Servicing

Monday - Friday 7.30am - 5pm

Tyres and Batteries
Warrant of Fitness testing
Phone 432 7233

PARADISE QUARRY

PARADISE QUARRY STONEMASONS

Specialists in stunning stone for landscape Suppliers & installers of northland's own schist for all your stonemasonry & landscaping Requirements

(09) 432 2722 or GEOFF (021) 972 139
www.paradisequarry.com

Susan, the Painter

Phone for a free quote

Ph. 027 370 5339



BLIND PRO

Blinds • Awnings • Shutters

Indoor blinds and outdoor screens

Call us today for a free, no obligation consultation and quote

ph 09 423 9661
website www.blindpro.co.nz
email info@blindpro.co.nz

McQUINN PUMPS

How's Business? ... It's Pumping!

24/7 SALES, SERVICE & INSTALLATION | PUMPS & WATER TREATMENT
PHONE SUPPORT AVAILABLE

8000 627 846
PHONE FREE

NOW AT 72 KIOREROA ROAD
—ALONG FROM RD1 & ITM

Deadline for next issue - Wednesday 13 September

TRADES & SERVICE DIRECTORY Ph 09 432 0209



HANSEN
Drainage & Earthworks


DRAINAGE:
* Septic Systems * Water Tanks * Truck & Digger Hire *
* Subdivisions * Domestic * Commercial *
Certifying Drainlayers

Licensed Contractor for
Waste & Drainage Work



EARTHWORKS:
* Subdivisions *
* Farm Work: Effluent Pond Design & Build, Dams, Races *
* House Sites * Driveway Prep * Lawns * Roding *

P. 09 432-7877 M. 027-432-7877
E. karl@hansende.co.nz



Team James Alexander

JAMES ALEXANDER
021 878 178
SALESPERSON & AUCTIONEER

ASHLEIGH LOUISE
027 733 5703
SALES ASSOCIATE

Licensed Salesperson: The Real Estate Shop Limited Licensed (REAA 2008)

Small Building Jobs & Repairs

- Letterboxes • Curtains • Smoke alarms,
- Clothesline • Decks • Fences,
- Kitchen and bathroom repairs
- Rental property maintenance

Call Tony on 021 196 2949

Diggermate
OPERATING AND HIRE

CALL GEORGE
027 214 5501



GREEN DESIGN LTD
ARCHITECTURAL DESIGN SERVICES

*Focusing on
Sustainability & Energy Efficiency*

Contact Simon
Mob: 021 2845 095
simon_duffy00@hotmail.com | www.greenbuildiddesign.co.nz



Long Run Roofing & Cladding
Re-roofing & Spouting
Edge Protection



Terry Mounsey
021 562 269
wetaroofing@xtra.co.nz

**RELIABLE &
PROFESSIONAL SERVICE**

**STORAGE
BREAM BAY**
76 Waiwarawara Dr, Ruakaka 0171

Karen Loft
Business Manager
Mob: 021 432 701

Office Hours 9.00 - 1.00
email: storagebreambay@gmail.com
www.storagebreambay.co.nz

LOW COST DRIVEWAYS & SURFACING NEEDS

Concrete or asphalt beyond your budget ...

We have the next best solution for a fraction of the price.

Call for a quote, you'll be pleased you did!
Paradise Quarry Contractors

Geoff (021) 972 139 or (09) 432 2722

For contractors who 'think' ...

This Space Now available

\$38.50 gst inclusive
or for regular customers
(six or more insertions)
\$34.65 gst inclusive

MPP
MARSDEN
PANEL & PAINT

Panelbeating and Spraypainting
Caravan and Motorhome Repairs
Tyres New and Secondhand
Punctures

470 Marsden Point Rd, Ruakaka
Call 09 4330313 24 Hrs or Bert 021 983 724

M.V.B. Electrical Ltd.
Working in Bream Bay since 1977

Repairs • Installations • Advice

Mike van Blommestein

Phone: 09 432 1015 • Mobile: 0274 783 749
Email: mikevanb@xtra.co.nz

**BLINDS
SHUTTERS
& CURTAINS**
Bream Bay Whangarei & Districts

**Rollers, Venetians, Verticals
Shutters, Curtains & Outdoor Blinds**



Ask about our DISCOUNT for households
Free in-home measure & quote
Free Installation

Phone Gail 0211 95 35 35

www.blindsandshutters.co.nz

**GRAEME BINT
FENCING**

GOOD RATES, NO JOB TOO SMALL
09 432-1599 or
027-292-2833
grbint@xtra.co.nz

MANGAWHAI SMALL ENGINES
Grasshopper, Husqvarna and Honda dealer




194 Molesworth Drive, Mangawhai
Ph: 09 431 5270 or Mb: 021 655 481
Email: msengines@xtra.co.nz

**BREAM BAY
ACCOMMODATION**
RUAKAKA

STUDIO - HOLIDAY HOMES - B & B
BOOK ONLINE OR PHONE
Ph: 09 432 7025 Mob: 021 2722 739
website for online bookings: www.breambayaccommodation.com

**LAWSON
CARTAGE**

FOR ALL YOUR
EARTHWORKS & CARTAGE NEEDS
Suppliers of: **topsoil, compost, woodchip,
bark, sand, pebble, rocks and firewood.**

Ph/Fax 09 432 8418 or 021 768 940
458 Marsden Point Rd. PO Box 142, Ruakaka 0151
email: lawsoncartage@xtra.co.nz

BREAM BAY NEWS PHONE 09 432 0209
Email: breambaynews@xtra.co.nz

Post copy to : Bream Bay News, RD 2, Waipu
Email: breambaynews@xtra.co.nz
or leave it at the Waipu or Ruakaka Post and Lotto Shops

FOR SALE

HAY Conventional bales and baleage. Top quality.
Phone 027 432 0351.

WATER TANKS

09 431 2211

sales@absolute
concrete.co.nz

RAWLEIGH'S PRODUCTS Independent dealer. Ointments back in stock. Phone Susan McRae 027 227 2291.

WORMS FOR SALE
For worm farms
Phone 432 0209
or text 027 432 0070

Scooters Plywood
3mtr Scaffold Planks \$77
12mm H3.2 NS
Plywood \$79.00
Ph 438 6565

FREE STUFF

AEG DOUBLE WALL OVEN Free if you can use it. Ph. 021 143 8749

WANTED

VEHICLES WANTED. Top cash paid For any VANS, UTES, TRUCKS, 4X4, Dead or Alive, damaged, de-registered Mechanical problem, no WOF we buy it. Call 0800 333 398

OLD NEWSPAPER Copies of the Bream Bay News, Advocate, Herald, Leader, Weekend Lifestyler, or Mangawhai Focus for recycling as erosion control. Waipu Lions fundraiser. Phone Dave Bell 09 432 0861.

PERSONAL

TIDY SINGLE MALE PENSIONER 68 seeks another single male pensioner late 60s 70s for friendship company and more. Ph 028 462 408

WELL BEING

THERAPY FOR MENTAL AND PHYSICAL WELL-BEING. Practical solutions for anxiety depression or personal growth. Affordable and effective. Melinda 021919898

THE NEXT PUBLICATION DATE

of the Bream Bay News will be Thursday 21 September
The deadline for all copy is 4pm on
Wednesday 13 September

CLASSIFIED ADVERTISING

Costs \$5.50 for up to 20 words and 20c for each additional word.

Boxed, classified adverts cost \$16.50 gst .inc.

Phone your advert through to 432 -0209
email it to breambaynews@xtra.co.nz

Post to: Bream Bay News, RD 2 Waipu 0582
or leave it with payment at The Waipu Post Shop or the Ruakākā Gift and Lotto Shop

SERVICES OFFERED**NORTH LAND HEADSTONES**

Located in One Tree Point
Your Local Headstone Showroom
Call 0800 707 800
www.northlandheadstones.co.nz



Tree Removal
✓ Pruning
✓ Chipping
✓ Stump grinding
Qualified & Insured
Ph Scott (0800) 468-9663
Arborcare Tree Maintenance

PHOTOGRAPHER AVAILABLE. Waipu, Commercial, real estate, weddings, documentary, aerial, drones, events. Ph: 021 139 2553.
EIGHTYTHREEPHOTO.COM

Waipu Boarding Cattery

Excellent care and accommodation
Ph Sue 432 0394



GLENMOOR WATER CARE
WATER TANK CLEANING
No need to empty your tank
• Vacuum or full scrub
Phone Mark Draper
0274 707 607

JD LAWN CARE SERVICES
PH. 021 063 7907

Lawn mowing, Weed spraying, Water blasting, surface cleaning of driveways, paths and patios, Hedge trimming, Section clearing, tree pruning, wood chipping and more.

SOCIAL SERVICES

LINKING HANDS
Health Shuttle
Phone (09) 431 8969

**BREAM BAY ANGLICAN FOODBANK**

If you would like assistance or know someone that does, perhaps we can help
Please phone Janet 433 0045
Or Anoek 021 141 3409

SOCIAL SERVICES**Safeman Safe family Men's Centre**

Safeman Safefamily offers a safe place for men to talk privately without judgement and with complete confidentiality. We are peer led and professionally supported and offer a range of services and support for men and their families.

The services we provide are as follows:

- Advocacy Navigator
- Court support
- FGC Support
- Probation Community Service Provider
- Legal Advice
- Marriage Celebrant
- House and property blessing
- One to one counselling
- Drug and Alcohol support
- Anger management group sessions
- Supervisor for court ordered access
- Work brokers/ help with employment opportunities.

No appointments are necessary, we have an open door policeu - if you need help or know someone that does just come on down to: **9 Takutai Place, Ruakākā**. We are right next door to Jimmy's Barber Shop or I can be reached by phone 021 121 0763 - Phil Paikea

Bream Bay Community Support Trust

Takutai Place, Ruakaka Phone: 09 432 7197

Services we provide:

- Registered Social Workers
- Family Support Workers
- Youth Workers
- Youth Hangout Space (watch this space...)
- Youth Holiday Programme
- Community Connectors
- (Connecting community to various services)
- Free Whanau Ora Medical Clinic with Ki A Ora Ngatiwai. Wednesday mornings 10am-12noon, by appointment only phone 09 435 4586
- Free Budgeting Service – Tuesdays 10am-12pm by appointment
- Mana Wahine Ki Wahine Toa, women's group
- Ha Tane – men's group
- Listening Ear – need to talk? Mon-Fri 9am-4pm no appointments necessary, cuppa and a listening ear available

Waitata Sessions 12:30pm every Wednesday, in our hall, come along for a sing along.

Community Connections 10:30am-12pm every Friday in our hall. Hot soup and cuppa available. The purpose of these sessions is for the community to get together and partake in different activities together, getting to know one another, sharing talents/hobbies/passions creating connections in the community, building friendships. The session topics are

Coming up:

Friday 18th August – Indoor Bowls

Friday 25h August – Homemade Selfcare Product Workshop

Follow us on social media – Facebook and Instagram for updates on what's happening here during the week.

www.bbtrust.co.nz

PUBLIC NOTICES

TAKAHIWAI MAORI COMMITTEE

established 1977

Triennial Election, 1 October 2023, 11am,
478 Takahiwai Rd.

Agenda: To confirm the Trustees.

Acting Chair: T.M.A. Kepa

tkep001@gmail.com

Marsden Bay
Garden ClubMonthly Meetings held
3rd Thursday of the
month.

ALL WELCOME

1:00 pm – Ruakākā Hall

– Sandford Rd

Contact – Secretary –
0210515581WAIPU TO WAIPU
COVE CYCLE AND
WALKWAY TRUST

AGM

Wednesday 4th October
7 pmat the Waipu Cove
Surf Lifesaving Club

Bream Bay Medical Centre Ltd.

Ruakākā Town Centre, Ruakākā

Monday - Friday: 8.30am - 5pm

Saturdays: 9am - 12pm

Marsden Cove Medical Centre
1A Ngawaka Lane, One Tree Point

Monday - Friday: 8.30am - 5pm

Please advise at time of booking
if you require an extended consultationWe will be closed from 3pm - 5pm on Thursday 21st September
for staff training.

Ph: 432 8060

New patients welcome

Waipu Cove Surf Life Saving Club
2022/23 Season

AGM

Sunday, 15 October, 1pm
@ Waipu Cove SLSC clubroomsPlease forward any nominations
for election of club officers
and any items for business by
Sunday 1st October

ALL WELCOME

Followed by Potluck dinner



MARKETS

OTP
ARTISAN MARKET
PH 021 530 153
Fundraiser for Whangarei Hospital
Children's Ward
Third Sunday every month
Spaces available

WAIPU
Boutique Market
SUNDAY
Handmade & Homegrown
ARTS | CRAFTS | FOOD
Sunday 10 September
9:00am - 1:00pm
Waipu Coronation Hall
Claire | 021 272 2294
Kate | 021 064 5698
www.waipumarket.co.nz

BREAM BAY 60's UP

WHERE: Ruakaka Recreation Centre
9 Takutai PlaceWHEN: the 4th Friday of the month
At 10:00 am for games, indoor bowls etc.

Speaker or Entertainer at 1:30 pm

Monthly bus trips.

New Members Welcome

JUSTICES OF THE PEACE



Justices of the Peace

Ruakākā

Paea Paki 09 432 8262/021 149 1625

Darrell Trigg 09 432 7256/021 332 901

Ken Orr 09 432 8215

Wayne Buckland 022 644 5376.

One Tree Point

Jules Flight 0274 777 210

Sir John Goulter 021 612 442

MM Jolley 027 415 9486

Ian Bogue 0274 300 418

Grant Brown 022 248 7126

Waipu

Trevor Vaile 021335 075

Doug Scott 027 229 9752

Ken Couper 027 292 0524

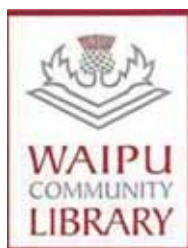
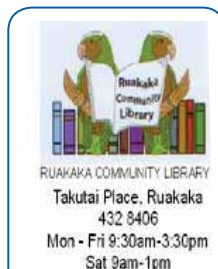
Angela Stolwerk 021 823 966

Jackie Fulton 09 9299200/ 0210 2567355

Chris Martin 027 367 2947

Make contact with a Justice of the Peace
(on any day) and make an appointment to have
your documents completed.A service desk also operates 10am to 11am on
Saturdays in the Ruakaka Library.

LIBRARY HOURS

Monday, Wednesday,
Thursday, Friday &
Saturday 10am - 1pm.
Tuesday 10am - 4pm.
Phone 432 0375JP Service available
Saturdays 10am - 11am.BREAM BAY SUNDAY
CHURCH SERVICESPresbyterian Camellia Ave, Ruakaka:
8.45am. The Centre, Waipu: 10.15am.
Prayer Service: 7pmEncounter 223 Marsden Pt. Rd,
Ruakaka, 10am.Anglican 1st and 3rd Sundays - St Paul's
Ruakaka 2nd and 4th Sundays -
St Peter's Waipu. All services start at
9.30am.Catholic Holy Family Church,
Ruakaka, 10.30am. Mass or Liturgy of
the Word

Lifepoint. 300 OTP Rd, 10.30am.

LOCAL PEOPLE READ THE
BREAM BAY NEWS
IT IS AN EFFECTIVE
PLACE TO ADVERTISE

Harcourts Waipu

End of Cul-de-sac in Nova Scotia **WAI2555**
SET DATE OF SALE
 Closes Friday 29th September (unless sold prior)

- 612m² site – fully fenced, private backyard
- 4 bedrooms – master with ensuite
- Open plan kitchen, dining and living area
- Separate lounge with heat pump
- Backyard - secure place for the kids to play
- Internally accessed double garage
- Flat stroll to Waipu village

Lyndie Mullins 021 101 6389

Superb Sea and Island Views **WAI2548**
\$929,000

- 3-bedroom home on a 1-ha lifestyle block
- Ensuite/walk-in-wardrobe in master room
- Expansive stunning view across rolling hills and out to Bream Bay
- Open-plan living flows to the full-length deck
- Enough grazing for the pet pony
- Carport and 3-bay shed
- Less than a 10-minute drive to Waipu village

Christine Tierney 027 488 1883

Priced Reduced on Watch Lane Beauty! **WAI2335**
\$999,000

- Immaculate 3-bedrm/2-bathrm home
- Expansive manicured 1175m² site
- Modern, spacious, and warm
- Heat pump in lounge and master bedroom
- Quality fixtures and fittings
- Built by Platinum homes in 2016
- Situated at the end of a cul-de-sac
- Easy walk to Waihoi Park and Waipu

Lyndie Mullins 021 101 6389

Harcourts Waipu | 7 The Centre, Waipu | 09 432 4000
 Waipu Real Estate Ltd Licensed Agent REAA 2008

Harcourts Waipu

WIN an escape in luxury

New Zealand
Sotheby's
 INTERNATIONAL REALTY

NOTHING COMPARES TO AN EXCEPTIONAL GETAWAY

Have your property appraised by us before 27th October 2023 and go in the draw to win one of two luxury weekend getaways to beautiful Queenstown*. One winner will be drawn per venue. Each package includes:

- A two-night luxury stay for two people at Matakauri Lodge or Hulbert House on Friday 17th November and Saturday 18th November 2023.
- Breakfast, pre-dinner drinks, canapés and dinner bookings/allowance for both nights.

SANDY MCKENZIE
 +64 21 431 541
 sandy.mckenzie@nzsir.com
 Licensed Salesperson REAA 2008

YANA BELL
 +64 21 0807 9342
 yana.bell@nzsir.com

Each Office is Independently Owned and Operated. NZSIR North Limited (licensed under the REAA 2008) MREINZ

BBR BREAM BAY REALTY

BREAM BAY REALTY LIMITED (LICENSED: REAA 2008)

Shop 11 | Town Centre | Ruakaka 0116 | NZ
 PH: 09 433-0300 | bbrealty.co.nz
info@bbrealty.co.nz

Proud sponsors
SPCA
 WHANGAREI

Price Reduced!

OPEN HOME—SUNDAY 2.00—2.45pm
 413 Prescott Road, Ruakaka

HOME + COTTAGE = FAMILY
 Set on a private 2025m² section, with expansive sea views. Surrounded by lush greenery, flourishing trees and gardens, creating a serene atmosphere. Main —3 bedrooms + 2 bathrooms. Cottage—1 bedroom + 1 bathroom.
Offers Over \$950,000 | [#4160](http://bbrealty.co.nz)
FIONA SOUTHERN MNZM
Mob: 021 317 775

OPEN HOME—SUNDAY 1.00—1.45pm
 160B One Tree Point Road, One Tree Point

A PEARLER HARBOURSIDE
 Spacious and private well loved home on large section. Wide hallways, open plan living, opening to covered portico. Separate lounge or media room. Three large bedrooms, two bathrooms, both with underfloor heating. Private walkway leads to beach access off Graham Street.
Price \$1,025,000 | [#4151](http://bbrealty.co.nz)
JANINE GOLDSMITH AREINZ
Mob: 021 432 793

New Price!

OPEN HOME—SUNDAY 12.00—12.45pm
 6 Kamahi Place, One Tree Point

SITTING PRETTY ON KARO
 This desirable family home is well situated for all day sun with good size living and dining having pride of place with views of the surrounding area. The classic kitchen is sure to impress. There's 4 bedrooms, the main with ensuite & good size family bathroom services the other 3 bedrooms.
Price \$830,000 | [#4161](http://bbrealty.co.nz)
JOANNE DEWSON AREINZ
Mob: 021 780 622

OPEN HOME—SUNDAY 12.00—12.45pm
 6 Kamahi Place, One Tree Point

LIVE THE GOOD LIFE
 A beautifully maintained sun filled home. The well-appointed kitchen & living areas all open to the North facing patio & large Archgola with drop down blinds. The three bedroom, two bathroom home is well laid out, with significant amounts of storage space. Perfect and private.
Price Now \$990,000 | [#4104](http://bbrealty.co.nz)
JANINE GOLDSMITH AREINZ
Mob: 021 432 793

OPEN HOME—SUNDAY 12.00—12.45pm
 6 Kamahi Place, One Tree Point

GONE FISHING!
 Positioned in a small cul-de-sac & close walking distance to Ruakaka Surf Club. 2 lounges, 2 bathrooms & 3 double bedrooms. Open flow to large outdoor entertainment area for extended family. Strong in brick and Palliside cladding, fully fenced with easy garden maintenance.
Price \$1,020,000 | [#4152](http://bbrealty.co.nz)
FRANCIE STOKES
Mob: 022 656 0165

OPEN HOME—SUNDAY 12.00—12.45pm
 6 Kamahi Place, One Tree Point

ENCHANTED GARDEN @ OTP
 This 4-bedroom family home near the boat ramp & harbour is full of hidden delights. Spread over three levels that offer three double sized bedrooms, plus one single or study. Positioned well back from the road for privacy.
Price \$785,000 | [#4121](http://bbrealty.co.nz)
FIONA SOUTHERN MNZM
Mob: 021 317 775