

# Bream Bay News

Established 1967. Delivered FREE twice monthly

Phone 432 0209. email [breambaynews@xtra.co.nz](mailto:breambaynews@xtra.co.nz)

Mobile 027432 0070

Postal address - RD 2, Waipu 0582

Website: [www.breambaynews.co.nz](http://www.breambaynews.co.nz) LOCALLY OWNED AND OPERATED

8 October 2020

## Affordable Quality

- \* SECURITY DOORS
- \* INSECT SCREENS
- \* SHOWER DOORS
- \* BLINDS
- \* AWNINGS
- \* WARDROBE SYSTEMS

Regular Bream Bay Service



PH: 438 9452

34 Albert St Whangarei  
Div. Shadelite Industry

## Meeting the candidates

There were just three Meet the Candidates events in the Whangarei Electorate leading up to the general election on Saturday 17 October and two of them were in Bream Bay.

The Waipu Business and Community Group hosted a meeting in the Waipu Presbyterian Church Hall on Tuesday 22 September. Eight of the 11 candidates standing in the electorate turned up to speak.

Three days later the Ruakaka Residents and Ratepayers Association hosted a meeting at the Ruakaka Recreation Centre. Around 80 people turned up to listen to eight candidates – with Ciara Swords of the Opportunities Party and Kerry Campbell of the New Conservative Party, neither of whom was at the Waipu meeting, attending. If you went to both meetings you would have had a chance to hear all but one of the candidates. Jennifer de Jong of the Aotearoa Legal Cannabis Party went to neither meeting.

The Ruakaka Ratepayers Association had also invited candidates in the Te Tai Tokerau seat to attend but only Janice Epiha of the One Party attended.

Both the Waipu and Ruakaka meetings followed a similar format with candidates each given a set time to speak before people in the audience got a chance to ask questions.

Quick to his feet at both events was Mark Rasmussen who at the Waipu meeting asked candidates about the United Nations Agenda 21. Greens Candidate Moea Armstrong told Mr. Rasmussen that there was nothing he need be afraid of in Agenda 21. "It is a 23 year old non binding UN resolution aimed at sustainable development."

At Ruakaka Mr. Rasmussen invited candidates to write on a piece of paper what they thought the percentage of carbon in the atmosphere is. However, chairman Jules Flight told the candidates this was not an examination and they need not answer Mr. Rasmussen's question unless they wanted to.

Labour candidate Emily Henderson jumped to her feet to tell Mr. Rasmussen that it was "way too much."

David Seymour of Act (Whangarei's own David Seymour and not the party leader) turned up in his wheelchair to the Waipu meeting and spoke in favour of the End of Life Bill. He said this was the reason he joined Act. He has Moto Neuron Disease and believes he should be able to choose a dignified death. "Its about choice," he said. Daniel Watts of the One Party seemed to find his stride and speak much more confi-

*Continued on page 3.*

## Colour run brings high excitement to Waipu Primary



Justine Botha, with the hose, made sure the children's T shirts got good and wet as they went down the water slide so the green powder paint spread liberally on the poly poly mats at the next activity station, would stick fast.

The last week of Term Three held some high excitement for Waipu Primary children with the school's PTA organizing a "colour run."

On Wednesday 23 September the children were all asked to wear white T shirts to school and over the course of the afternoon these progressively became coloured with bright splashes of paint as the children ran, slid, crawled through net tunnels, pulled on tug of war ropes and performed forward rolls on mats through showers of yellow, red, blue and green powder paint.



## Mangawhai Heads 3 Tangaroa Road

Asking Price \$900,000

Christine Birss 027 235 4323 [christine.birss@bayleys.co.nz](mailto:christine.birss@bayleys.co.nz)

MACKYS REAL ESTATE LTD, BAYLEYS, LICENSED UNDER THE REA ACT 2008

### Panoramic views, to enjoy

Climb up the hill to this site and you will appreciate the mix of native bush, rolling hills and spectacular coastline. If you value privacy, you will love this site.

Strangely comforting are the lights at night of Mangawhai Heads. Far enough away to be silent, but magical warmth of knowing that people aren't too far away.

Breamtail is incredibly unique - a working farm unfolding along a pristine coastline, without the chores of managing the land yourself.

Residents share ownership of a beach lodge resting on the doorstep of Mangawhai Beach.

Privacy, yet so close to everything

[bayleys.co.nz/1152133](http://bayleys.co.nz/1152133)

**BAYLEYS**

## EDITORIAL

Curtains & Blinds  
with class

- Mobile "in-your-home" service
- Genuine pensioner & house lot discounts
- Hundreds of samples
- 25 years in interior design

**FREE CURTAIN MAKING (OVER \$30/m)  
UP TO 60% OFF BLINDS**



FOR A FREE MEASURE & QUOTE  
**PHONE LESLEY**  
**09 432 7140**

Bream Bay's only curtain and blind supplier  
**WINDOW DECOR LTD**  
Servicing Bream Bay & Mangawhai

Craig Brown had advice on how to keep  
the peace around the committee table

My adventurous niece Kristy is coming to stay with us tomorrow.

She came back from Papua New Guinea at the start of the pandemic and had quite a time getting back home via Australia so it will be interesting to all about this. Kristy has been working for Volunteer Service Abroad using her video editing skills to help people on a small offshore island there tell their stories.

At the age of 16 Kristy was interested in politics and she came with me to a local body election meeting in Waipu where the late Craig Brown was speaking. Craig was Mayor of Whangarei at that time and I was surprised and grateful for the time he took to after the speech making to talk to Kristy. He was genuinely interested in young people as witness to the years he spent on the committee of Waipu Primary, the Board of trustees of Bream Bay College and the board of North-tec.

I have been looking back over some of the interviews I was privileged to have conducted with Craig. I phoned him up after he was named in the New Year's Honours list of 2015. He was on his launch up in the Bay of Islands fishing with his wife Helen. The fish weren't biting and we must have had quite a long talk.

As well as the major roles he played as twice elected Mayor of Whangarei, Chairman and member of the Northland Regional Council and member of the Northland District Health Board, over the years Craig had served on dozens of smaller trusts and boards.

I asked him if these could sometimes be hard work with some difficult people to sit around a table with?

He replied, "You have to analyse people sometimes and look at what is going on with them. As long as there is a will for the same outcome. You have to remember the real reason you are all there. It shouldn't be about egos and self."

I think this is something we need to keep in mind. The

falling out between Robbie Jones and the Ruakaka Residents and Ratepayers Association (see letters on page 6) is mostly over the issue of the mangrove removal from the Ruakaka estuary. I think Craig was instrumental in helping the ratepayers gain the NRC resource consent that enabled this to happen.

While he didn't buy into Robbie's view that mangroves are native trees and therefore sacrosanct, I think Craig understood that this was a valid viewpoint and one that was held sincerely.

I recall him telling members of the Ruakaka ratepayers to stop pressing the point on this subject, saying they had their resource consent and should be exercising a little bit more grace in their victory.

*Marilyn*

## POLLING BOOTHS IN BREAM BAY

**Mata Hall** – 1707 State Highway 1.  
Election Day Saturday 17 October 9am – 7pm.

**Ruakaka School multipurpose room.** 12 Sandford Rd. Election Day Saturday 17 October 9am – 7pm.

**One Tree Point School Hall 97 OTP Rd.**  
Advance voting Saturday 10 October – Sunday 11 October 9am-4pm  
Election Day Saturday 17 October - 9am – 7pm.

**Bream Bay College Hall 2 Peter Snell Rd.**  
Advance voting Saturday 10 October – Sunday 11 October 9am-4pm  
Election Day Saturday 17 October - 9am – 7pm.

**Bream Bay Community Trust Hall** 9 Takutai Place  
Advance voting Monday 5 October – Friday 9 October 9am – 3pm  
Monday 12 October – Friday 16 October 9am – 4pm.

**Waipu Coronation Hall.** 47 The Centre  
Advance voting Sunday 4 October - Saturday 10 October 9am-4pm  
Monday 12 October – Friday 16 October 9am – 4pm  
Election Day 17 October 9am – 7pm.



Thinking concrete but don't know where to start?

## Think Atlas Concrete

- We quarry the aggregate
- We manufacture the concrete
- We site visit to advise the best options
- We give you the choice of mix and colours
- We give a choice of local placers for you to choose
- We manufacture concrete to your requirements
- We stand by our product, you stand on it

**Atlas Concrete**  
**Your First Call for Concrete**  
**Ph: 0800 888303 - Brynderwyn**  
**or 432 5030 - Ruakaka**

## THE BREAM BAY NEWS

is published by Bream Bay News Ltd.

Address : RD 2, Waipu

Phone : (09) 432 0209

Mobile : 027 432 0070

Editor : Marilyn Cox

Accounts : Susan McRae

Advertising design and website maintenance Megan Lea

Printed by Horton Media

## We'll have what you need to know !



## Eastwood 210 sqm

**\$401,100 incl gst**

Includes: plans, consent, kitchen, appliances, tinted double glazed windows, tiles, carpet, blinds.



Wayne Pickerill  
Managing Director

"Hi, I'm Wayne Pickerill, Managing Director and Project Manager for your new Fowler Home. Enjoy quality and all the benefits of dealing with an efficient, low overhead, nationwide company, where I will take a personal interest and be involved through to completion."



**FOWLER  
HOMES™**

More designs at [www.fowlerhomes.co.nz](http://www.fowlerhomes.co.nz) or visit our office at 63 Walton St, Whangarei. Phone Wayne Pickerill 438 4840



## Meeting the candidates Continued from page 1.

dently in Ruakaka. This party is opposed to the End of Life Bill, legalizing cannabis and abortion.

Moea Armstrong said she was seeking the party vote for The Greens and not the electoral vote.

"If you want Jacinda to remain as PM you need to vote Green."

Chris Wetere of Advance NZ, who came to the Waipu meeting, seemed a sincere young man and when questioned by the BB News reporter about why he didn't join a more conventional party said many people had made this suggestion to him. He said he felt it was important for everybody to have a voice.

At the Ruakaka meeting Ciara Swords (TOP) held up some graphs and said that there are 119,000 empty homes in New Zealand, more than two each for the 56,000 homeless people. She said a tax on property would encourage people to invest in other areas than in real estate.

Long time campaigner for Social Credit Chris Leitch said the Reserve Bank of NZ in creating \$100 billion in new money was doing what his party had long advocated. The only problem is this money is going to rich investors.

David Wilson of the New Zealand First Party talked about this party's record of securing Provincial Growth Fund money for the Whangarei district.

Emily Henderson of Labour pointed out that this funding had come from a Labour led government and Mr. Wilson retorted "You wouldn't be the government if it were not for us."

New Conservative candidate Kerry Campbell said family is at the heart of his party. He said they should be relationship training in schools, prisoners should go through a three stage process before they are released back into the community and laws should be made based on citizen initiated referenda.

Dr. Shane Reti answered this proposal by saying he believed in representative democracy where those elected to parliament get the best information they can before making decisions on behalf of their constituencies.

To a question from the floor asking why such a well informed, empathetic person, and someone who is likely to be the next leader of the National Party, should be a member of the that party and not in the Labour camp. Dr. Reti thanked the questioner for his "kind words" but said wisdom and empathy were not the prerogative of one party.

## Ruakaka School Trolley Derby



James Wallace holds the reins while some of his classmates push from behind at the start line of the race circuit at the Ruakaka School trolley derby.

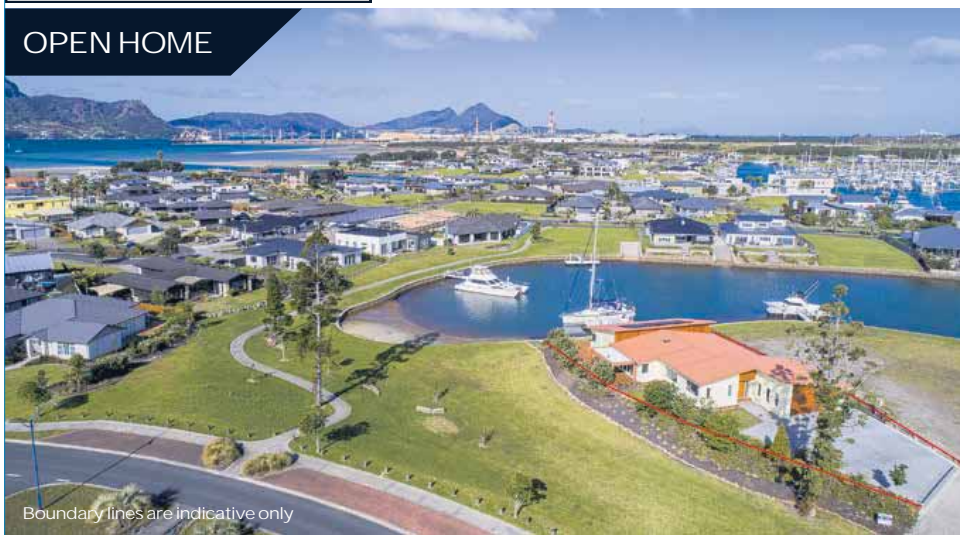
At the beginning of Term Three Ruakaka School Principal Mrs. Dunn had challenged each classroom to build a trolley. They followed through with a wide variety of construction methods and trolley styles from the highly decorative strung with coloured balloons or built in the shape of a waka to those streamlined for speed.

On Thursday 24 September, the second to last day of the term, they brought them all out for display, for judging and, those that could go the distance, for a time trial around the school's bicycle circuit.

Mrs. Dunn was thrilled with what the classes had come up with and told the children that this was one of the most thrilling days of her entire teaching career. "And that's saying something", she said.

# BAYLEYS

### OPEN HOME



Boundary lines are indicative only



**One Tree Point** 17 Stace Hopper Drive

## Live, work, play in paradise!

Live in the world class waterways at Marsden Cove. Working remotely from your home office is a breeze - approximately 90 minutes north of Auckland. Play in this fabulous coastal environment with sun, sea and sand. Swimming, kayaking, paddle boarding all at the bottom of your lawn. Moor your boat on your own jetty - be fishing or sailing in no time at all. Close to harbour and surf beaches, marina and boat ramp and local amenities. This new tilt-slab home has been designed for relaxed family living with seamless indoor/outdoor flow to the wraparound deck which has a portico off the lounge featuring automatic louvres and blinds for shelter. Fabulous views to Mt Manaia.

**Live the coastal lifestyle dream!**

[bayleys.co.nz/1060066](https://bayleys.co.nz/1060066)

4 2 2 2

**Auction (unless sold prior)** 1pm, Wed 28 Oct 2020  
84 Walton St, Whangarei

**View** Sat/Sun 1-1.45pm

**Melva Hartnell** 027 499 8463

[melva.hartnell@bayleys.co.nz](mailto:melva.hartnell@bayleys.co.nz)

MACKYS REAL ESTATE LTD. BAYLEYS, LICENSED UNDER THE REA ACT 2008



**Camp Waipu Cove**

**Our multi purpose sports surface is free for use by locals for tennis, basketball or soccer. Bookings essential Ph: 09 432 0410 or make a booking at our office**

Phone 432 0410  
869 Cove Rd., Waipu  
www.campwaipucove.com



**STORAGE BREAM BAY**  
Waiararua Street, Ruakaka, 010

- Fully Secure
- Carded Gate Entry
- Security Camera Surveillance
- Reasonable Rates

Website: www.storagebreambay.co.nz  
E-mail: info@storagebreambay.co.nz  
Phone: 021-432701 Fax: 09-4327029



As seen on Grand Designs 2019

**COASTAL CONSTRUCTION PROJECTS**

0274 320 007

REGISTERED MASTER BUILDER QUALIFIED TRADESMAN CARPENTERS MARCUS@CCP.NZ WWW.CCP.CO.NZ



**BBR**  
BREAM BAY REALTY

**ON THE MOVE?**  
Let me be the one to put the wheels in motion to sell or find you a new home today.

Call for a free Market Appraisal.

**FIONA SOUTHRN MNZM**  
Ph 021 317 775  
fiona@bbrealty.co.nz



## LETTERS

### Fledgling blue herons prepare to leave their nest

It's been with great anticipation that a pair of herons were encouraged to nest in our large pohutakawa tree with the help of Arborist Rob Dawson. Last year a pair frolicked and romanced in our tree but failed each time to build a nest with a strong base up high in the canopy.

Rob using his high tech tree climbing apparatus and skills climbed up in the tree tops to create a base of bundled branches wedged together.

We then waited for breeding season and were delighted when a pair found it and prepared to build their nest on the base.

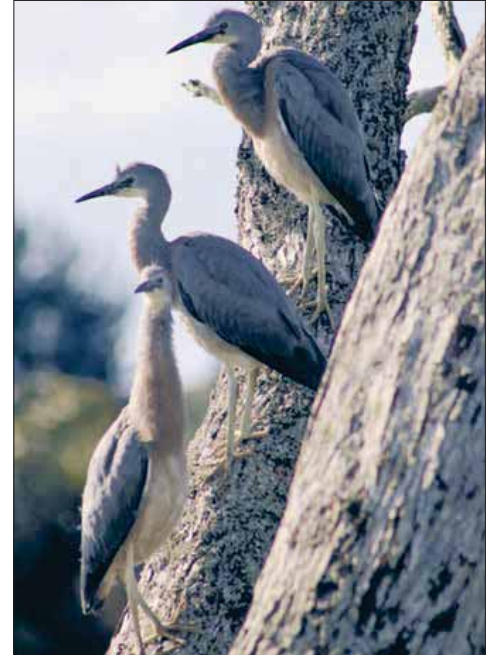
We watched the pair with anticipation, celebrating when hearing chicks first chortling sounds and feeding frenzies.

So now it's a goodbye babies, go well..... and next season, we will ask Rob back, we have 2 sparse branches closer to our veranda perfect for a new home base and a better clearer improved view! Then wait and see.

Nora Butler  
Ruakaka

### Council spend

A little while ago your correspondent Bev Woods, was interested in the council spend in Waipu versus Ruakaka. As you will appreciate this year in particular Staff at WDC, like the rest of us, are working hard to carry on business as usual. However our head of Parks and Recreation Sue Hodge, has replied to my query regarding this matter. She has made it clear that the following amounts only include money spent in Parks and Recreation over the last three financial years that includes the words Waipu or Ruakaka, and does not



include money spent on roading, community development or any other significant departments.

The following codes were searched in Parks and Recreation for the three financial years 17/18, 18/19 and 19/20. Operational, Project and Grants. The total spend for Waipu over this time was \$185,934 the total spend in Ruakaka over this time was \$587,063.

Ken Couper  
Bream Bay Ward Councillor

### No more Bream Bay News copies at Waipu 4 Square

Please be advised that Waipu Four Square has decided that we will no longer be distributing your newspaper.

This is in complete response to the persistent way your paper has deemed our Covid response in our store. My team and myself and partner are flabbergasted that your newspaper has persisted in printing this problem.

Our hands are tied yet your paper does not see this.

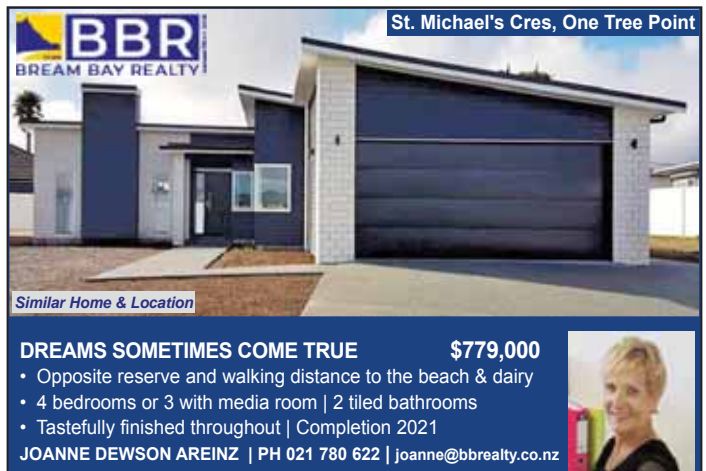
This particular member of the public (letter writer Beryl Wilcox) has been in several

times upsetting my team and I have yet to meet her but I would like to. Anyone would think we chose to do this. So please do not send any more papers to our Four Square.

We are at Level 1 now and we hope to never see the cones again but please rest assured if the Levels increase again we will have no choice but to do the same.

Jodie Ansell  
Store Owner, Waipu Four Square

More letters on pages 6 & 7



**BBR**  
BREAM BAY REALTY

St. Michael's Cres, One Tree Point

Similar Home & Location

**DREAMS SOMETIMES COME TRUE \$779,000**

- Opposite reserve and walking distance to the beach & dairy
- 4 bedrooms or 3 with media room | 2 tiled bathrooms
- Tastefully finished throughout | Completion 2021

JOANNE DEWSON AREINZ | PH 021 780 622 | joanne@bbrealty.co.nz



## Sun shines for Waipu kids fishing day

After having to change the date of the annual Take a Kid Fishing event several times due to Covid 19 lockdowns, the Waipu Fishing Club got lucky last Sunday 4 October when the sun shone and scores of parents and grandparents brought the children out for a school holiday excursion.

Pictured: Scarlet Davis (aged 7) and Amelia Davis (5) of Auckland carefully carried the fish they had just caught to be weighed before releasing it back into the river. The children were visiting their grandparents in Waipu Cove.



## Could Ruakaka become the tomato growing capital of NZ?

If the latest local venture to get support from the Provincial Growth Fund succeeds, it could bring with it opportunities for Bream Bay's young people and workers who have recently lost their jobs at the LVL plant.

Greg Prendergast, Managing Director of Rohe Produce Limited, and the man behind the proposal to build a 8.9 hectare tomato glasshouse somewhere at Marsden Point envisages young people working in the tomato house and then going on to achieve university degrees in horticulture.

"Potentially anyone can work in a hot house but it's not just picking tomatoes and putting them in boxes. Someone could start work here and move up to become a team leader and then a crop manager. It will be a pathway forward for people."

Mr. Prendergast has been involved in horticulture for forty-two years.

He started out getting paid to pick strawberries on his parents' 37-hectare horticultural block in the Waikato. He has seen a gap in the supply chain with a shortage of tomatoes in the New Zealand market over the winter months.

"From March to around October we are importing tomatoes from Australia.

We have a free trade agreement with Australia and we send tomatoes there as well so that's OK. But Australia has the Queensland fruit fly and we don't."

The Australian tomatoes have to be picked green and

ripened with gas and then treated with radiation and even then there is no 100 percent guarantee a fly won't get through.

The Marsden Point hothouse will grow organic tomatoes under LED lights to increase production, with screens across the windows to prevent insect incursions. A range of tomatoes "everything that is on the market now" will be grown there.

Mr. Prendergast could not say exactly where in Marsden Point the hothouse will be located as negotiations are still in progress with the landowner.

The Provincial Growth Fund has given a \$14 million loan to the venture with a total of \$70 million needed to see it through.

There are potential investors currently conducting due process checks and Mr. Prendergast is confident enough about the likely outcomes to say he expects earthworks to begin on the chosen site in four to six weeks.

"We will be bringing in around 200 containers of gear from around the country."

The build – the glass house and packing sheds alongside, will take between 16- 18 months and the first tomatoes should go on sale in 2022.

It is envisaged that around 200 construction jobs will be available while the build is in progress and then there will be 110 permanent jobs in the tomato growing operation.

# BIG RED

## TRUCKING

Call 021 070 8211

Owner /Operator Duncan Mackay



GENERAL CARTAGE SERVICE

Metal / Topsoil / Sand / Manure / Hay / Silage



WATER

Prompt Delivery And Reliable Service.

Healthboard Approved Drinking Water Carrier.



# MILBRIDGE

## ENGINEERING

ON SITE WELDING  
MOBILE SERVICE  
HEAVY & LIGHT FABRICATION  
REPAIRS & MAINTENANCE  
ALUMINIUM & STAINLESS

Rory McLean ☎ 021 55 77 94 | 09 556 0558

✉ rory@millbridge.co.nz 🌐 www.millbridge.co.nz

RayWhite

Another  
SOLD

Lot 5 Sail Rock Road, Ruakaka

## Just Sold!

Delivering great results in your area. For a free friendly appraisal call Malcolm on 021 783 533 or email us at [breambay.nz@raywhite.com](mailto:breambay.nz@raywhite.com)

Join our Bream Bay community page on <https://www.facebook.com/groups/breambaycommunity>.

Ray White are proud to offer a 10% discount on our service fee to SuperGold Card holders.

SuperGold



Malcolm Norton  
021 783 533  
[malcolm.norton@raywhite.com](mailto:malcolm.norton@raywhite.com)

The Real Estate Shop Limited Licensed (REAA 2008)

[rwbreambay.co.nz](http://rwbreambay.co.nz)

## LETTERS

## Membership of RRRA is open to all

The Committee, with wry amusement, wishes to thank Roberta Jones for the compliment she paid us – we are “educated and thin”!

She erroneously questions the ethnicity of the Committee. She knows full well that it is elected at an advertised public meeting and that any person of any ethnicity, gender or creed can be nominated, and subject to a normal voting process, be elected. Membership of the Association is open to any resident or ratepayer from within the Ruakaka Parish of the Ruakaka Survey District – in this context Parish is a survey area and has no religious connotations.

The remarks that there are currently no Maoris on the Committee is true. Over the years, Maori have served on the Committee. One of the Founders was Mr Henry Kepa, OBE from Takahiwai who went on to become a Whangarei County Councillor. In the 1980's respected kaumatua, Grant Pirihi, MZMN, was both a Committee Member and Chairman. Valuable inputs were made by the Wassells. On our 2019-20 Committee, we valued the contribution made by Ari Carrington from Takahiwai. Over the years other tangata whenua residents have been nominated but have declined.

Over the years we have had good relations with Patuharakeke Iwi Trust Board and supported them when we could e.g., the present rahui on the taking of shell fish from Mair and Marsden Banks. They did not object to our Consents to control mangroves but did seek conditions which were accepted.

We welcome participation from persons from all ethnic groups.

## Perplexed

I have been prompted to write to the editor because I am quite perplexed by comments made by a writer about the Ruakaka Residents and Ratepayers Association in the 24 September 2020 edition of the Bream Bay News. I attended a meeting of this group earlier in the year and was really impressed by the long list of issues affecting the community that are followed up by this Association. This was one of the prime motivators of my decision to join it.

While freedom of speech is the foundation of democracy and the writer has every right to her opinions, I personally have found no evidence to support her claims. I have attended meetings regularly since joining and have not heard any dialogue indicating that “the Committee represents business people's interest in accumulating wealth.” In fact I have no idea as to what the business interests of the committee are and really it is “non of my business.”

I note a variety of people attend meetings. Some as described by the writer might be “educated and thin males!” Others are not. I see a group of people whose capacity to effectively follow up issues affecting the larger community as being impressive. I feel this is more important to me than their age, size, skin colour, ethnicity and landownership status.

The claim that “the committee engages in degrading

nic groups. We would also love to have younger persons serve on the Committee, but they would need to be willing to make the time available to serve their community – often older residents have ‘time on their hands’ and can thus contribute. Gender wise, our 4 lady members make a huge contribution to our discussions and activities. Committee Members are not elected on the basis of race or gender – just their willingness to serve the entire Ruakaka community.

Yes, it is true, Committee Members, both male and female own property – their homes and/or land. Is that a crime? It does mean that their commitment to Ruakaka is very deep.

Her statements:

- “Significantly, the Committee represents business people's interest in accumulating wealth”
  - “The removal of manawa (mangroves) has more to do with their values of greed, selfishness, and their desire to enhance their private property values”
- are both defamatory and insulting. Committee Members would be within their right to take legal action on such remarks.

The actions that the Ruakaka Residents and Ratepayers Association's Committee take are always in the hope that they will benefit the safety and welfare needs of all residents in our district and that our environment is safeguarded.

*Committee Members,*

*Ruakaka Residents and Ratepayers Assoc. Inc*

actions upon Nature” is a sweeping generalisation that presents only one side of a very complex issue. It appears to me that there is compelling information supporting both sides of the argument and individuals should be left to make decisions based on their interpretation of this. Perhaps the groups concerned about the Manawa (who appear to be flourishing), could divert their concerns to the sand dunes behind Mair Beach, a very fragile ecosystem that is systematically being devastated by 4 wheel drive vehicles. I can however understand that it is less scary to take on “the Committee and wives” than 4 wheel drivers as I too have felt intimidated by their presence while walking in the sand dunes.

It is heartening to see the commitment made by various interest groups to issues affecting this community. They all have the best of intentions but obviously can have different pathways to achieving what they see as a positive outcome. It is sad to see division, negativity and the perpetuation of non validated information about groups and individuals. We are all part of a great community. Let us all work together harmoniously to make it even greater.

*Robyn Armstrong  
Ruakaka*

## In reply to Robbie Jones

Everyone is entitled to their informed opinions in order to support or reject an issue, if one is not in alliance, join that group to influence change. You have undermined your own credibility.

We do ourselves a great disservice when we allow the bitter opinions of others to subvert our own thoughts. We should not allow an angry person full of opinionated, slanderous accusations and insults to drag us down, in order for them to feel whole. Your reference to families will do even more to discredit and annul what you have potentially endeavoured to achieve.

In terms of the Ruakaka Rate Payers Association, universal membership is built into the constitution by all of those that initiated interest and concern for our community. This gives one the opportunity to have and express an opinion in open debate.

Voluntary members of our community who share informed concerns and interest in a balanced manner have invested their time in this endeavour.

*Trevor le Clus  
Ruakaka*

## Great pleasure to work with like minded people on the Ruakaka Residents and Ratepayers Association

Robbie, you and I were voted onto the Ruakaka Ratepayers Association at the same time. This was about four years ago.

After only a few months you found it wasn't for you. Myself however found the opposite.

I have the pleasure of working with great people who only have the best interests of the whole of the Ruakaka community in mind.

I have helped with mangrove plucking, beach patrol, painting the Recreation Centre, and many other activities, on behalf of the Ratepayers Association.

It is my great pleasure to work with so many like minded people and as long as the Rate Payers Association continues working for our whole community I will continue to be a member of the Ratepayers Committee.

*Sharon Booth  
Ruakaka*

## Nessy in the Ruakaka River?



This photo was sent in by Brian Stacey with the caption “Nessy on holiday in Ruakaka”

## First round of Northpine's Stronger Communities grants

Northpine has announced four grant recipients in the first round of its Stronger Communities funding initiative. The programme, which will allocate grants each three months, was launched by Northpine in February 2020 but put on hold because of the uncertainties caused by the Covid 19 lockdown.

The inaugural recipients are:

- The Waipu Lions Club to help the club host a Lions convention in Waipu in late October 2020.
- The Waipu Centennial Trust Board for the relocation

tion of the jail building which is part of the Heritage Precinct Project.

- The Northland Mens Masters Gold to help with expenses running the Freyberg golf tournament in November 2020.
  - The Bream Bay Combined Arts Group
- More information about the Stronger Communities scheme, including applications forms and terms and conditions can be found on line at: [www.northpine.co.nz](http://www.northpine.co.nz)



## A well earned special award



Jess (right) with some of her 10th grade team members, from left: Charlie Winslow, Erika Hamilton and Charlie Winslow. Jess spent a day working at Engraving Systems to pay for medals for all her players.

Jess Andrews received a special club award at the Bream Bay United junior prize-giving held at the Ruakaka Recreation Centre on Sunday 27 September. Fourteen-year-old Jess played her first season alongside her mother, Selina in the women's premier team, stepping up to play goalie when the team's regular goalie was away.

She is a qualified level one referee and has acted as assistant referee for the premier men's grade this year.

She also set up and helped to coach a 10th Grade Girls team, The Bream Bay United Panthers, the first all girl's team ever with the club.

Unable to afford medals to present to her 10th Grade players Jess volunteered to spend a day working at Engraving Systems in exchange for a set.

## Lions conference in Waipu

The Waipu Lions will be hosting a regional Lions conference at the end of this month with 120 people (delegates and their partners) representing Lions Clubs from the northern Waikato to the Far North.

This region for the Lions also included branches in the Pacific Islands but with the Covid 19 pandemic no one from Pacific Island clubs will be able to attend.

The conference will be held from Friday 30 October to Sunday 1 November and will be based in the Waipu Celtic Barn.

While the conference is in progress the delegates' partners will be taken to visit the Waipu Museum, McLeod's Brewery and on a tour of a local garden.

# HAMMER HARDWARE

Let's do it again!  
Last year one of our local customers  
won \$10,000.00,  
in the Hammer Hardware Birthday promotion.



OR



### IT'S EASY

just spend \$40 and scan your AA card at the counter.

Plus you'll also save 20c per litre of fuel.

Only until 31st October.

T&Cs apply, visit [hammerhardware.co.nz](http://hammerhardware.co.nz) for more details.  
AA Smartfuels terms and conditions apply see [aasmartfuel.co.nz/terms](http://aasmartfuel.co.nz/terms)

Waipu Hammer Hardware

Open weekdays 8am-5:30pm, weekends 8am-4:30pm

For all enquires, phone 09 4320292

Visit us at 35 the Centre, Waipu

## WAIPU LOTTO & POST



Lotto  
Postshop  
Photocopying

Emailing  
Newsagents  
All stationery needs



The Centre, Waipu

Phone 432 0900

# MENU

**Local, organic, grass fed beef  
is available in store NOW.**

*Durham Farms boasts sustainable farming practices,  
and is located a stones throw from Waipu Township.  
It doesn't get any more local than that!*

	<b>Lamb Spare Ribs.....</b> \$17.99 kg	 <b>Yes</b> <b>WE DELIVER!</b> ✓ Waipu ✓ Langs Beach ✓ Ruakaka ✓ One Tree Point ✓ Marsden
	<b>Free Range Whole Chicken .....</b> (Size 16) \$18.50 ea	
	<b>Premium T-bone Steak .....</b> \$30.99 kg	
	<b>Store made Free farmed Loin Bacon.....</b> (250gm) \$11.25 ea	
	<b>Store made Garlic Chicken Kiev's .....</b> (Large) \$7.75 ea	
	<b>Free Flow pet mince.....</b> \$5.99 kg	

**Yes we use:**

- ✓ Paper wrapping
- ✓ Compostable Trays

**TODAYS CATCH**

Fridays catch could be one or more of the following

- ✓ Hapuka
- ✓ Tarakihi
- ✓ Gurnard
- ✓ Snapper

**FISH Friday**  
Fresh and local



📍 19 The Centre, Waipu

 **Millers Meats Waipu**

**Order today**  
☎ 09 601 3210



# Lets keep moving.

Over the past 6 months, Jacinda Ardern has led us through an extraordinary time. Together, we've been through a lot this year. And together, we are in a strong position to respond, recover, and rebuild.

Labour took decisive action to protect jobs, incomes, and local businesses in the face of COVID-19 through the wage subsidy scheme and income support package. I know many local businesses and workers who got the wage subsidy when they needed it most.

Let's keep moving.

That's our slogan for the 2020 election, and that's what will drive our campaign in Bream Bay.

Labour puts people at the heart of our plan. Our recovery focuses on getting Kiwis back to work, supporting small businesses, entrepreneurs, industries and job creators. We are rolling out infrastructure investment and positioning New Zealand globally, by promoting our primary sector and advancing international trade.

We need to build on our strengths and that's why this Government is funding \$2.5m towards construction of Ruakaka Recreation Centre which will benefit the area's growing population.

This is our chance to future-proof New Zealand and ensure we emerge with a more sustainable economy that will look after our most vulnerable.

This election is about each and every New Zealander, it's about the team of 5 million, and it's about you. That's why it is really important you vote for who you want to represent the Whangārei electorate. I'm asking for your vote. Because there's more to do. And we need your support to keep delivering.

Whangārei is home for me and my family, and I am passionate about its future. My career has been spent working for our people in the courts and working for change in the justice system. I want to use those skills to make sure Whangārei's voice is heard in Government.

For Bream Bay to get the most out of the next Government, Labour needs both your votes. I can be an even stronger voice for Whangārei in Jacinda Ardern's team as your local MP.

## Come and meet me in Ruakaka

**Saturday 10th October - 1:00pm - 3:00pm**

Bream Bay Trust, 9 Takutai Place

**Go hard, Go early. Vote this weekend!**

 **Emily Henderson**  
for Whangārei





## POLICE REPORT



### 12 year old assaulted

A 12-year-old boy was assaulted and had his scouter stolen by a young man and woman in their late teens on Marsden Point Rd. at around 3pm on Wednesday 30 September. Police have recovered the scooter and are following forensic leads to find the assailants.

### Burglary of unlocked house

A burglar (or burglars) entered a house in the Ruakaka Beach area stealing a number of household items some time between 6-7pm on Thursday. The owner had left the house unlocked while he went to the shop. Police remind householders to always secure their homes when they leave their property even if only for a short time.

### More than double the limit

Police stopped a 37-year-old Ruakaka man while driving in the Ruakaka Village at 9pm on 24 September. He returned a breath alcohol level of 660 micrograms of alcohol per litre of breath and will be appearing in the Whangarei District Court on a drink driving charge. The legal limit for drivers aged 20 years and over is 250 micrograms.

### Driver admits to smoking methamphetamine

Police are waiting on the results of a blood test before charging a 26-year-old Kaikohe man who was stopped while driving on State Highway One at Waipu at 1.30pm on Saturday 3 October. The man was unable to complete a drug test, which involved walking along a straight line and admitted to having recently smoked methamphetamine.

### Now two vehicles at the bottom of Gorge Rd bank

There is now a second vehicle in the river at the bottom of a 20-metre bank on Gorge Rd. The second crash occurred on 22 September at 2pm, just three days after the first crash and the two vehicles remain side by side in the river. Police warn people to drive with care as they approach the corners where the camber slopes away.

### Five family harm incidents

Bream Bay Police dealt with just five family harm incidents in the fortnight 21 September to 5 October as compared to 19 incidents for the previous two weeks.

## Margaret Joyce Moreland – Joyce

14 August 1951 – 20 September 2020



A Waipu identity, Joyce Moreland has died at the age of 69 years after a long illness.

Joyce was Scout Mother in Waipu for upwards of 20 years and people of that era have fond memories of the camping adventures she took them on. Joyce received a 20 years service medal from Scouting New Zealand for her work.

She also took swimming lessons at

Waipu Primary for a number of years.

She was a craft enthusiast, excelling at sewing, scrapbooking, making birthday cards and cake decorating and was a keen photographer.

When, with her husband Ken, she purchased and ran Waipu's iconic Thistle post and gift shop for six years from 2001 – 2007, she lined the shelves with her signature teddy bears.

Joyce loved a party and liked nothing better than to be organizing a Halloween, Christmas or birthday celebration putting into action her crafting skills to make props to support the theme and add to the fun.

For the birthday of a young man who had recently crashed his car, she made a car crash cake and for a cousin who had a new spa pool, a cake designed as a spa pool with the cousin seated in the pool.

Joyce grew up in Whangarei and, after leaving school, worked at Hoskings, a haberdashery and clothing shop there. She married Ken at the age of 19 and moved to Waipu to take up the life of a farmer's wife.

She continued with her interest in sewing crafts and set up a co-operative shop in Waipu with friends to sell their hand made products.

She was very devoted to her family her siblings, her nieces and nephews as well as her own children. She was very supportive of daughter Sacha's Highland dancing and bagpipe playing and the various sports her son Darcy became involved in.

Sacha said her mother had always loved the beach and it was because of this the family decided to hold her memorial service, which took place on Friday 25 September, at the Waipu Surf Lifesaving Club.

# JUST LISTED

28 Shoemaker Rd - Waipu

## \$590,000



## Shane Samtani

Licensed Real Estate Salesperson | Auctioneer

☎ 022 360 4444

@ shane@goodground.com

🌐 www.goodground.com



**goodGround**  
REAL ESTATE LTD  
Life's better here  
Licensed REAA 2008

## \$1,159,000



# JUST LISTED

917 Waipu Caves Rd - Waipu

Contact me today for a  
**FREE market appraisal**  
on your property!  
Now is a great time to sell!

## Bream Bay Garden Maintenance

Spring Tidy Up · Landscaping · Planting  
Hedges trimmed · Trees trimmed  
Weed control · Pruning · Rubbish removed  
House washed · Water Blasting · Building  
Painting · Free quotes

**NO JOB TOO SMALL**

One Offs, Weekly, Fortnightly or Monthly

**Ph. Marcus 021 343 727**

## Skin Cancer Doctors Whangarei Town Basin

- Full skin checks
- Dermoscopy analysis of moles
- Surgical and non-surgical options
- No referrals needed
- Southern Cross Affiliated Provider
- Accredited Skin Cancer Doctor with the Skin Cancer College of Australasia



**Dr Christian Wieser & Dr Celia Keane**

Early diagnosis and effective treatment of skin cancer in a friendly and welcoming environment

09 438 2188 | [www.skincancerdoctors.co.nz](http://www.skincancerdoctors.co.nz)



**99 MARSDEN PT ROAD, RUAKAKA**

92 Units from 6 x 3 to 1 x 1

Each unit individually alarmed and monitored  
Electrified security fence

**Ph. 0508 273 262 or 0275 310 788**

CLEAN - DRY - SECURE



INSIDE/OUTSIDE storage at 50 Cove Rd., Waipu

**Free phone. 0800 432 135**

**[enquiry@breembaystorage.co.nz](mailto:enquiry@breembaystorage.co.nz)**

**[www.breembaystorage.co.nz](http://www.breembaystorage.co.nz)**

**Please note: Correspondence  
on the subject of President  
Donald Trump is now closed.**

## LETTERS

### A Bit Over The Top

It was an interesting headline in the last issue of the BBN which stated that in Bream Bay the average age is "a bit more" than the national average. Over 15 years more it turns out, which in anybody's view is a pretty big bit. The most worrying revelation is that while the average age for the area is a bit more than the national average, I'm a bit more than that.

Which puts me in a pretty good position to remember the good old days in Waipu when you parked just about anywhere, when drivers would natter from idling cars in the middle of the Braigh and the town was a lot more relaxed. Now getting a car park isn't always easy and the council has decided on the unwelcome development of parking tickets.

Since the road was resurfaced, new broken yellow lines were painted in a little previously unmarked piece of curb between the power pole outside the Hammer Hardware and the entrance to Caledonian park. It was always a treat to find that spot unoccupied, being as it was, close to the shops and an easy

U turn across the road. So late one Friday afternoon it seemed that even though yellow paint now included this little parking oasis, a few minutes there grabbing some weekend essentials could be accomplished without inconveniencing anyone and with impunity.

Wrong as it turns out. Some weeks later a fine from the council for \$60 came in the mail. Of course an outraged submission in defence of such a minor transgression only resulted in an email from Armourguard, who apparently administer parking in Waipu on behalf of the council, rejecting my explanation and to pay up. So let this be a cautionary tale for others a bit older than the average with a thought to park where they always used to; there are armourguard contractors watching and waiting, empowered by the council to solve Waipu's parking problem by pinging us in the pocket. I can't help but feel a bit pissed off.

*Carey Hablous  
Waipu*

### Truth is fundamental

I refer to the Editorials of 10th and 24th September 2020 and related letters to the Editor.

Truth is a simple word but fundamental to existence at all levels. Why else do we teach our children to tell the truth? Now we have social media where "truth" has become an endangered commodity. Anyone can say anything unchallenged. Misinformation and conspiracy theories are rife. Trump is in the vanguard, Tweeting untruths, falsehoods and shameless lies – not my opinion, proven by fact checkers. I am incredulous so many Americans knowingly accept this situation based solely on political persuasion, especially politicians sworn to serve the USA. One outcome is the toll Covid-19 is taking on the USA. The same applies to denying climate change.

Why does any of this concern us in NZ? Like it or not USA is the leader of the democratic world and should lead on matters such as climate change. The world becomes more problematic with an erratic USA. Authoritarian leaders like Putin and Xi Jinping simply

change the rules to remain in power. Trump is trying to do the same. He is already preparing the groundwork with assertions of a rigged election. What might happen post-election in the USA doesn't bear thinking about. Alarmist? Maybe, but the consequences of undermining democratic norms are alarming.

We are indeed fortunate to live in NZ with a fair election and almost unanimity on Covid-19. Nonetheless, we need to keep our eyes open and minds alert. Social media has the potential to be a greater virus/contagion than Covid-19 especially when validated by the US President. A 14-year-old Bream Bay College student told me fights are now commonplace caused by comments made on social media by one student about another. Having a local paper discuss such issues benefits our community. We should all call out those seeking to mislead or misinform.

*Steve Scott  
Ruakaka*

### Trump Derangement Syndrome

I have with great amusement, been reading your last two editorials you have written. I did not realise that in NZ, that we had such people who had a major case of TDS (Trump Derangement Syndrome). It would be funny if the subject matter was not.

As someone who has a means to persuade people politically, it is an abuse of power that you now wield & are using. I do not say this lightly. Both editorials have been so far left biased, you could have called your paper the Communist/Democrat Times. While you espouse the virtues of the NYT (1), Washington Post (2) & CNN (3), one assumes that you fact checked the articles & news stories that they wrote/filmed to make sure they were correct & not totally biased. A good editor would do that to show that they are independent.

I would like you to watch the link provided to get your opinion on what the creator has said. It is only 10mins 22 secs. (4) I have & have known everything

about the attacks toward Trump from the beginning because I read with an open, logical mind, not one with a hell bent political view. Due to this, it is the reason that I now support Trump. Not because of ideology, but because of what he has done in the past, present & hopefully future. The truth has been coming out slowly & the spying by the Obama Admin will be coming to light. The Obama ex-FBI Lawyer, with a link below from the Washington Post (a), lied to make a case to spy on Trump, which is, illegal unless you do not believe in the law & only in the ideological line of your politics.

I will await your reply to give you time to digest what I have given you. I assume that you will do your own fact checking from both sides & not one from an ideological view point.

*Graham Keye*

### A commendation

I would like to commend you for publishing the letters from your readers who have differing opinions to those expressed by yourself.

This shows that you are mindful of your "responsibilities to society" and that you accept other people have the right to state their opinions too.

Personally, I don't think you will have written your editorial without serious consideration of your subject matter.

*Mary Wilson  
One Tree Point*



# Craig Alexander Elliot Brown

17 June 1947 - 24 September 2020

Craig Brown the Whangarei District Council Mayor who grew up in Waipu died suddenly while on a fishing trip in Pouto, south of Dargaville on 24 September and was fairwelled at the Morris and Morris Chapel in Whangarei on Wednesday 30 October.

Craig had a string of titles after his name. Two term Mayor of Whangarei, Chairman of the Northland Regional



Craig Brown talking with Gladys Rowsell of the Marsden Lions at the Ruakaka Towncentre.

Council, Queens Service Medal recipient being just some of these. But another title befitting the big man with the big smile is *people person*.

Craig enjoyed meeting people and had a genuine interest in anyone who crossed his path. At his memorial service at Morris and Morris chapel in Whangarei on Wednesday the current Mayor of the Whangarei District told how when Craig was Mayor and she was a Council employee she had seen Craig get down to eye level with a young boy who was visiting the Council chamber. Craig had asked the young man about his plans for his future.

He also loved Northland. John Bain a fellow Northland Regional Council representative, told how on trips down the east coast of Northland Craig had often exclaimed how lucky we all were to be living in such a wonderful place.

Craig first got a taste for public service when he took on the role of secretary for the Waipu Tennis Club. He went on to be President of the Waipu Lions from 1978 to 1996. He was Chairman of the Waipu Primary School Committee, and then Chairman of the Board of Trustees of Bream Bay College for six years. Former Bream Bay College Principal Jules Flight recalled that his first meeting with Craig was a bit uncomfortable. Jules had been appointed to his new position by the outgoing school committee at the time of transition to *Tomorrow Schools* and Craig felt this should have been the job of his new board. However the pair went on to work well together and when Jules was made Chairperson of the Council of The Northland Polytechnic Council (Northtec) Jules invited Craig to join him on the council.

Craig first stood for election to the Whangarei District Council after the death of Councillor Mike Pausina in 1992. Mr. Pausina's wife Pauline urged him to contest the vacant seat. He was elected Mayor in 1998 and served two terms until 2004.

Craig often said how proud he was to be elected to this role by the whole of the Whangarei District having come from the small rural town of Waipu.

He served on the Northland District Health Board from 2004 – 2019 and on the Northland Regional Council from 2004 – 2016 and was Chairman of the NRC from 2010 to 2013.

After all those years on the district and regional councils Craig knew his way around and was adept at cutting through red tape. Around five years ago when a thick mass of red seaweed washed up at Waipu Cove, Craig as our NRC representative called down to take a look. John Henderson, the then chairman of the Waipu Cove Reserve Board recalls Craig saying "leave it with me"

and then fast tracking resource consents so that local farmers could bring machinery onto the beach to cart the smelly stuff away.

Craig was also marriage celebrant and a Justice of the Peace and over the years was involved in dozens of trusts such as The Paper Mill Charitable Trust for artists with disabilities and the Saorsa Retirement Village Trust.

In January 2015 when he was named as a recipient of the Queens Service Medal in the New Year's Honours list the Bream Bay News phoned to congratulate him. He was up at Whale Bay fishing with his wife Helen.

Asked why he became involved in all these community service roles, he said,

"The Waipu community instills this sort of thing in you. You need to be part of the community if you want a say in how things go. You have to be prepared to step up when there is a need."

And he paid tribute to Helen who had been very supportive over the years. He said, "She knows how much I enjoy working in the community."

Call now to find out about our

## October Madness Marketing offer

A great deal designed to get you the best results.

## Our Bream Bay Team

**Julia Smith**

Licensed under the REA Act 2008  
021 718 333 / 09 438 0071  
julia.smith@eves.co.nz



**Lynda Peni**

Licensed under the REA Act 2008  
021 432 714 / 09 432 7153  
lynda.peni@eves.co.nz



**Whangarei Moxy Hire Ltd,  
The Power of Earthmoving!**



WMH are a large earthmoving company with 80 machines available for hire with or without operators.

We have: Bulldozers, Diggers, Compactors and 30 – 40 ton dump trucks.

Whether you need help cleaning out drains, roads, fence lines, dams or culverts

**WMH have you covered Northland wide!**



Visit [www.whangareimoxyhire.co.nz](http://www.whangareimoxyhire.co.nz)  
or call 09 434 4272

## Waipu netball teams make finals



Hayley Griffiths of Waipu Red shooting as Claire Boakes waits for the rebound in the championship final against Otamatea.

Both Waipu collegiate netball teams finished an excellent 2020 season by making their finals and playing off for first and second place.

Waipu Red and Waipu Black both finished runners up but club representative Leah Donaldson says they played some great netball which made for exciting games.

The Red team played Otamatea Snr 2 in the AR1 championship final, with the final score 27-21 to Otamatea.

Waipu Black took on Whangarei Girls High School in the championship final, going down 30-23. Donaldson says the team had a great season and improved in every game.

Waipu Blue, the club's intermediate team, also had some close results and good wins over the season, Donaldson says. "Many of the players were playing seven aside netball for the first time." This year's season was shortened due to Covid-19 restrictions but Donaldson says Whangarei Netball did a great job at putting protocols in place that allowed netball to proceed during Alert level 2.

## Second in the premier league



Jordan Rudman in action against Kamo for the Bream Bay United Men's Premier team

Having been promoted to the Northland premier league at the beginning of the season, Bream Bay United's top men's team has finished second in the region wide competition behind Onerahi.

The last game of the season was played under lights at the Ruakaka Recreation Centre sports fields on Friday 25 September, with Bream Bay defeating Kamo 3 goals to nil.

The team's rise through the ranks was meteoric. Starting the season with five losses in a row it has won all of its last six games. This result is all the more impressive as six of the team's members are youngsters still in college.

## Short but intense season for Bream Bay Hockey

Bream Bay College's mixed hockey team have just wound up a short but intense season.

They placed second at the Greenwood Shield at Warkworth, losing narrowly to Mahurangi College Boys in what was effectively the tournament final, says coach Bruce Paton.

In the shortened nine-game collegiate season, the Bream Bay team played in Northland's top division against the best college teams from around the region. They won seven games, drew one and lost one game. Their one loss was to Huanui College - again effectively a final as they were the top two teams in the competition - losing 1-0 in the final 16 seconds of the game.

Bream Bay ended the season second on the table by one point, and with the highest goal differential of all teams. Paton says every player in the team showed huge commitment and enthusiasm and says players who consistently performed well on the field were Trey Smart, McLeod Ritchie, Amy Swanson, Thomas Jacobson, Lucy Bayer and Deane Sands. Five seniors depart the team this year but Paton says they leave it in good shape with a solid core of quality players for next season.



Defender Trey Smart leaps over the ball as goalie Thomas Jacobson prepares to block it

# MAGIC TYRES

## Large selection of used & new tyres

**Ph. 438 3534    103 Port Rd., Whangarei**



## Takahiwai League Junior prizegiving

Takahiwai League held its junior prizegiving ceremony on Sunday morning September 27 just before the beginning of the school holidays. There were trophies (some almost as big as the children) and/or positive comments from the coaches for each of the players and after the formalities hamburgers and drinks for everyone. Shane Wassell was awarded a special prize for his volunteer services to the junior club while his son Terry was named club player of the year. Club President Shane Hool said Terry had "a very bright future" in league.



Players of the Year: Terry Wassell for the under 15s. Ariki Henry for the under 11s and Kye Hiko for the under 9s



Four-year-old Tangaroa Martin was the Under 5s Player of the Year.



Darroll Morunga was Under 7s Player of the Year

## Triumph for Bream Bay indoor cricket



The Bream Bay and Onerahi teams with the Northland indoor cricket trophy after the final

Bream Bay Cricket Club's indoor cricket team triumphed in this year's Northland indoor competition. Bream Bay came up against the Onerahi Central Unicorns in what turned out to be a tight final. Batting first, Bream Bay worked hard to post a slightly under par score. But when the Unicorns came in to bat Bream Bay's bowlers put the pressure on. With one over left Onerahi needed 11 runs to win. A wicket on the third ball put the match out of the Unicorn's reach, giving Bream Bay the win and ending a spirited and highly competitive indoor competition.

Summer cricket is about to get under way and the Bream Bay men's team practise Thursday afternoons from 5.30pm at the Bream Bay College nets. For the youngsters, the club has a rally day on 12 October from 3.30pm at the college nets for children aged five years and over. Junior games are on Fridays for six weeks from 30 October at 4.30pm in Whangarei, followed by a further six weeks in Term 1. These involve modified games and/or skill stations set up for various ages and abilities, all free and no gear needed. For more information check out the Bream Bay Cricket Club - BBC facebook page or contact Stephen Cunis at stephenc@nothericricket.co.nz or 021 211 5524.



**WE'VE GOT WHAT YOU NEED**

## STAY LOCAL

Staying local means less disruption in your life, with an easy commute to our courses.

### Stay close, go far.

By enrolling at NorthTec and staying in Tai Tokerau Northland, you're able to reduce living costs and you'll continue to receive whānau support, while gaining a high quality education.

*"The best thing about being at NorthTec is that it is close to home, I didn't have to move away from my family. My motivation comes from my family - they are my biggest supporters and they only want the best for me, so they keep me on track."*

Pene Burns-Kingiwaiaua



## Have a go at tennis

Waipu Tennis Club is taking part in a nationwide tennis promotion called "Love Tennis". This takes place on October 10 and 11 from 1 to 4pm on each of those days. Tennis Club members and members of the public are welcome to come along and have a go at tennis or simply find out more about the club. In the event of wet weather look on The Waipu Tennis Facebook page for a cancellation. The Waipu Tennis Club is located in the Caledonian Park accessed from St. Marys Rd.

For those who attend one of these afternoons and join the club on the day (this includes existing members) subs will be reduced from \$190 for adults to \$170, \$120 for Intermediates (High School) to \$100, \$100 for Juniors (Primary) to \$80, Couples sub from \$340 to \$320. For those who can't make it on the day the club will try to keep these special rates throughout October.

There will be fun activities for all ages and abilities, equipment provided or bring your own, courts for social tennis and mini games, basic coaching and instruction, lots of giveaways such as Hell pizzas, Rebel Sports vouchers and the chance to win a trip to a major tennis event in Te Anau.

The in-club competition on Tuesday nights is about to get under way. Anyone keen can contact the club and there might be a place in a team. Failing that Sunday at 3pm is the time to come along and play in a more relaxed social group.



## Love being active?

### 24/7 gym

**9 Takutai Place  
Ruakaka  
Ph: 432 7962**

- no lock in contract,
- no admin, no joining fee
- \$10 per week
- Ladies only gym
- Unisex gym
- Casual gym \$2 per day

**Come and join us at the  
Ruakaka Recreation Centre**

Lounge available for hire - up to 100 people  
Meeting room for hire - up to 15 people  
For events kitchen facility available

Very reasonable rates

Please help us to raise funds for the fire protection upgrade here at the  
Ruakaka Recreation Centre. To donate go to:  
<https://givealittle.co.nz/cause/save-the-ruakaka-recreation-centre>

Activity	Day and Time	Cost	Contact
Bream Bay Music/Play	Tuesday 9.30am to 11.30am	gold coin	Deirdre 0211761760
Kids Boxing class	Monday 4pm to 5pm		Terry 0226498672
Light Circuit Fitness class	Monday 10am to 11am		\$3 AnnMarie 0211653115
Light Circuit Fitness class	Wednesday 11am to 12pm		\$3 AnnMarie 0211653115
Tai Chi	Monday 11am to 12pm		\$2 Annette 4327897
Chi Kung	Wednesday 9am to 10am		\$8 Alice 02102400503
Aerial Yoga	Tuesday 6.30pm to 7.30pm, booking essential		\$18 Barbara 0212998840
Stretching classes	Thursdays 11am to 12pm		\$3 Lu 4328941
Karate	Thursdays 4pm to 7.00pm		\$5 Pam 4320760
60's up	4th Friday of month 10am to 4pm	\$12 annually fee	Joy 021491887
Music club	1st Monday of month 7pm to 10pm		\$2 Holly 021 842 060
Squash casual	Weekdays-booking essential 8am to 1pm	\$5 p/h	Rec Centre 4327962
Pilates	Tuesday 5.15pm to 6.15pm booking essential	\$12, concession (1/2x)	Barbara 0212998840
Pilates	Thursday 8am to 9am booking essential	\$12, concession (1/2x)	Barbara 0212998840
Zumba	Monday 8.45am to 9.45am		\$6 Janine 021437840
Zumba	Wednesday 5.45pm to 6.45pm		\$6 Janine 021437840
Zumba	Friday 4.30pm to 5.30pm		\$6 Janine 021437840
Cardio Drumming	Friday 9am-10am		\$10 Nadya 0278660334

We are also home to Bream Bay Squash club and Bream Bay United Association Football club

## Ten - year - old dance champion

By Peter Grant

Waipu's 10 - year - old dance champion Ava Mewett came home from this years Northland Performing Arts Jazz and Ballet Dance Competition with five trophies.

1st - Modern Jazz, 1st - Jazz impromptu, 1st - Contemporary dance, 2nd Musical Theatre, Best Personality and Junior Jazz Championship Winner. Remarkable achievements especially considering Ava was competing against girls one year older than her in the under 12 categories.

Ava from the Pulse Dance Studio will be performing her winning jazz dance 'Party in the



USA' in Waipu's Coronation Hall at the Youth Spring Symphony variety show, 3.30 on the 24th of October.

## Opp shop grants

The Waipu Anglican Opportunity Shop committee met in early September and voted to donate to the following organisations.

North Haven Hospice - \$2,000, The Stroke Foundation \$2,000, a new porch for St Peters Anglican Church in Waipu - \$2,000, the Waipu Cove Surf Lifesaving Club and the Ruakaka Surf Life Saving clubs each get \$1,000. The Northland Helicopter Trust - \$1,000, St John Bream Bay - \$2,000, The Ruakaka Recreation Centre - \$1,000 and the Waipu Cycle and Walkway - \$500.

In addition to these grants the Opportunity Shop supports the work of the Bream Bay Anglican Parish and the Ruakaka foodbank.

On behalf of the committee Chairwoman Dr. Sue Hancock said, "We would like to express our thanks to those who donate goods, those who purchase goods from the shop and importantly our volunteers who make it all possible."

## BREAM BAY Link

Operates every Thursday from 1st August 2019

### MORNING

Time	Departs	Arrives
9.00am	Departs Kaiwaka Kaiwaka Hall	
9.15am	Departs Mangawhai Village Village Shops Bus Stop (by restrooms)	
9.20am	Departs Mangawhai Heads I-Site	
9.35am	Departs Langa Beach Corner of Wairahi and Cove Roads	
9.40am	Departs Waipu Cove Beach Car park	
9.50am	Departs Waipu Monument Bus stop	
10.10am	Departs Ruakaka Peter Snell Road (opposite Takutai Place)	
10.50am	Arrives Whangarei Rose Street Bus Terminus	

\*For travel within Whangarei see CityLink Whangarei timetable  
[www.citylinkwhangarei.co.nz](http://www.citylinkwhangarei.co.nz)  
or get your timetable from the Rose Street office.

### AFTERNOON

Time	Departs	Arrives
3.00pm	Departs Whangarei Rose Street Bus Terminus	
3.40pm	Departs Ruakaka Peter Snell Road (opposite Takutai Place)	
4.00pm	Departs Waipu Monument Bus stop	
4.10pm	Departs Waipu Cove Beach Car park	
4.15pm	Departs Langa Beach Corner of Wairahi and Cove Roads	
4.30pm	Departs Mangawhai Heads I-Site	
4.35pm	Departs Mangawhai Village Village Shops Bus Stop (by restrooms)	
4.50pm	Arrives Kaiwaka Kaiwaka Hall	

OPERATED BY  
**LEABOURN**  
Ph: 0800 994 404  
E: office@leabourn.co.nz

### FARES

	One Way	Return
Kaiwaka	\$7.00	\$10.00
Mangawhai	\$7.00	\$10.00
Mangawhai Heads	\$7.00	\$10.00
Langa Beach	\$7.00	\$10.00
Waipu Cove	\$6.00	\$8.00
Waipu	\$6.00	\$8.00
Ruakaka	\$5.00	\$7.00

### ROUTE DESCRIPTION

Kaiwaka/Mangawhai Road, Molesworth Road, Mangawhai Heads Road, Cove Road, The Centre Waipu, Nova Scotia Drive, SH1, Marsden Point Road, Peter Snell Road, Marsden Point Road, SH15A, SH1, Otaka Road, Maunu Road, Walton Street, Rose Street Bus Terminus.

If you would like to be picked up elsewhere along the route, please phone Leabourn's to arrange this on the Wednesday before you want to travel.

CONTRACTED TO:  
**Northland REGIONAL COUNCIL**  
For service updates visit:  
[www.buslink.co.nz](http://www.buslink.co.nz)  
Feedback to buslink@nrc.govt.nz

## What's On in Bream Bay

- **THE WAIPU SUNDAY MARKET** next on Sunday 11 October . 9am - 1pm in the Coronation Hall
- **LINN LORKIN AT BLACK SHEEP FARM - HEY PIANO LADY** Sunday 11 October at 2pm and 5pm. Tickets \$37 from [www.blacksheepfarm.co.nz](http://www.blacksheepfarm.co.nz) or by phoning 09 432 0435.
- **THE MARSDEN COVE MARKET** Next on Sunday 18 October from 9am - 1pm. In the big marquee at Marsden Cove.
- **LABOUR WEEKEND FISHING COMPETITION.** at the Waipu Boat and Fishing club. Tickets \$50pp. Under 16 years free available at [www.waipu-boatandfishingclub.com](http://www.waipu-boatandfishingclub.com)
- **THE SPRING SYMPHONY YOUTH VARIETY SHOW** in the Waipu Coronation Hall rescheduled to Saturday 24 October at 3.30pm. Entry by koha.
- **FUNDRAISING CONCERT FOR NORTHCAL PIPE BAND.** Saturday 7 November at 7.30pm in the Celtic Barn. Performances by: he Northcal Pipe Band, the Waipu Pipe Band, singers Emma Couper and Alisa Dodds, Highland dancers and keyboard artist Andrew Garrett. Tickets \$25 from Waipu Real Estate
- **EXHIBITION WITH 12 CONTRIBUTING ARTISTS** at the Red Door Gallery. 7 The Braigh, Waipu. Open from 10am - 4pm, Wednesday to Sunday
- **TAKAHIWAI PUBLIC SCHOOL SPECIAL EXHIBITION AT KIWI NORTH** to 26 October. Kiwi North, 500 SH 14 in Maunu is open every day from 10am - 2pm.
- **WAIPU MUSEUM** 36, The Centre, Waipu. Open seven days 10am - 4pm.
- **THE KAURI MUSEUM**, 5 Church St. Matakohu. Open 7 days 9am -5pm. Special exhibition. Jewellery made from kauri timber and gum.



## Able to compete at national level again

By Julie Paton



Kiera Carroll swimming backstroke at a September Northland competition.

For the first time in a year a team of Bream Bay swimmers are heading to a national competition.

Coach Richard Dunkerton says it's been a tough year for all swimmers, with the uncertainty and constant delays and cancellations of competitions.

"It's affected them psychologically. It's the uncertainty, not knowing what is happening but being expected to be training, thinking something's coming but then it is pushed away," he says. "It's not Swimming New Zealand's fault, but Covid's fault."

Since New Zealand Short Course Championships in October last year, all planned national competitions were cancelled under Covid-19 restrictions. Bream Bay's senior swimmers have not had a major competition since the regional Northland Age Group Championships in January.

Swimming Northland has held three events since August, two under Alert Level 2 restrictions, one of which was put together at short notice to allow swimmers a chance for qualifying times when the three-day Auckland Short Course Championships in mid-September were cancelled.

But with most of the country now at Alert Level 1, the national short course event (held in a 25 metre-length pool) can go ahead starting 6 October. As the original venue was in Auckland which is still under Alert Level 2 with gatherings of more than 100 banned,

the event has shifted from to Hamilton's Waterworld Aquatic Centre and Auckland swimmers are unable to participate. They will contest a separate, simultaneous event under managed conditions at the Auckland National Aquatic Centre.

Eight Bream Bay swimmers will compete in Hamilton against swimmers from as far away as Southland, plus a couple of New Zealand-based Cook Islands and Samoan competitors. They are Kori Brown (17), Kiera Carroll (16), Samantha Dutton (16), Emilia Finer (15), Luca Matenga (16), Rebecca Reade (18), Ariella Ripohau (14) and Florence Venner (13).

Dunkerton has high hopes for some of the team, saying Venner and Ripohau in particular are high in the rankings, with Reade and Finer capable of making finals.

The following week, 15-18 October the Hamilton pool will host another national event, the Secondary Schools Swimming Championships which was rescheduled from August. Four Bream Bay College swimmers will compete: Kiera Carroll, Lily Matenga (14), Fidel Poulson (14) and Abby Wright (16).

MARSDENWASTE.CO.NZ

## YOUR FREE WILDFLOWER SEEDS ARE ON THE WAY

Check out the next edition of the Bream Bay News for your free wildflower seeds then call us and we'll help you with your spring clean too!

MARSDEN WASTE BIN HIRE

0800 336 673

482 MARSDEN POINT RD. RUAKAKA

We make sure we provide only the best quality service for your bin hire



Local people read  
**THE BREAM BAY NEWS**  
It is an effective  
place to advertise

## TRADES & SERVICE DIRECTORY Ph 09 432 0209

**astech electrical**  
N O R T H L A N D



Electrical Contracting & Repairs  
Electrical Inspector, Caravan EWO, Coolrooms, Air con., Heat pumps

P: 09 432 7968

M: 0274 780014

E: ashtond@astech.biz

**THE MAINTENANCE**  
4themaintenance@gmail.com

- ❖ Chemical and non-chemical house washing
- ❖ Window cleaning
- ❖ Painting and staining – exterior house, decking and fences
- ❖ Water blasting - decks, driveways and courtyards
- ❖ Clean guttering and downpipes
- ❖ Pest control and spider spraying

Phone now for a **FREE QUOTE**  
Tony 021 196 2949 or Melisa 021 075 6770

EXCEPTIONAL STANDARDS GUARANTEED

### THE NEXT PUBLICATION DATE

of the Bream Bay News will be Thursday  
22 October  
The deadline for all copy is 4pm on  
Wednesday  
14 October

# TRADES & SERVICE DIRECTORY Ph 09 432 0209

**T & T Property Care Ltd**  
 'Tried & True' Servicing the Bream Bay Area for 20 Years



Ph 021 0236 9159 | 021 0838 1177  
 Specialising in Commercial Mowing & Property Development  
 Landscaping Design, Establishment & Maintenance  
 tandtpropertycare@gmail.com

Ph: 09 432 0123

**BREAM BAY GLASS**  
 FOR ALL YOUR GLASS NEEDS



Mob: 0274954548

**AMG**  
 AUTO MOBILE GLASS

**FAST WINDSCREEN REPLACEMENTS & CHIP REPAIRS**

- Mobile service or come to our workshop
- Ultra competitive pricing. • Insurance claims welcome.
- Windscreen replacement in under an hour.

Phone Conrad on 022 036 2916  
 2/17 Gumdigger place.

**O'MALLEY CONTRACTING LTD | CONCRETE SPECIALISTS**

- FOUNDATIONS
- HOUSE SLABS | STAIRS
- RETAINING WALLS
- DRIVEWAYS | CARPARKS
- EXPOSED AGGREGATE
- COLOURED CONCRETE
- COMMERCIAL | RESIDENTIAL
- LICENCED BUILDING PRACTITIONER

Free No Obligation Quote



FAMILY OWNED & OPERATED

021 2200 198 | OMALLEYCONTRACTING.COM

**ABSOLUTE CONCRETE**

www.absoluteconcrete.co.nz  
 CULVERT PIPES  
 Spun and reinforced  
 Crane truck delivery  
 Drainage Merchant - Hardware Store  
 Email: sales@absoluteconcrete.co.nz  
 Phone (09) 431 2211  
 KAIWAKA

**MACSWAY SCAFFOLDING LTD**

WE BUILD, HIRE, ALLOY MOBILES, TEMPORARY FENCING, & SHRINKWRAP

Ph: 09 432 7643 • 0274 726 772  
 macsway@xtra.co.nz Kapa Road, Ruakaka

**Contracting**

Gorse Spraying  
 Pasture Spraying  
 Seed Drilling  
 Undersowing  
 Mulching  
 Topping  
 Fencing

Chris Sutton 022 643 2408  
 c.sutton.contracting@gmail.com

All Form & Lifestyle Blocks - No job too big or small

**BROWNE CONTRACTORS**  
 MP & RA

4T-DIGGER - BOBCAT - TIP TRUCK

Property Maintenance - Driveways - Building Sites  
 Stump & Tree Removal - Hole Boring - Chain Trencher  
 Calf Shed and Stockyard Cleaning

KAIPARA - WHANGAREI - RODNEY

Phone Matt: 021 199 6677  
 Email: mprabrownecontractors@gmail.com

**Bream Bay Electrical Ltd**

Industrial - Residential - Commercial  
 www.breambayelectrical.co.nz  
 breambayelectrical@gmail.com  
 027 35 33 555

Member **MASTER ELECTRICIANS**  
 Electrical Contractors Association of NZ

**Bream Bay Concrete Ltd.**

Free Quotes • Reliable Service • Quality workmanship

- Concrete pads
- Shed floors
- Pathways
- Home floors
- Driveways
- Concrete cutting
- Excavation works
- Retaining walls
- Piling fences
- Profiles for homes & sheds
- Subfloors & boxing

Mark Royals Ph: 432 0107 Mob: 0274 433 130

**This Space**  
**Now available**  
 \$38.50 gst inclusive  
 With a 10% discount if you  
 advertise in six or more  
 consecutive issues

**Tractor Mulching**

100hp tractor with high bodied yfalls,  
 mulcher, park finishing mowers, slashing  
 Gorse & blackberry spraying

Also mechanical tractor repairs

Phone Bain McGregor  
 0274 979 013  
 or 09 432 0527



**Grant McLean**  
 Stock Agent for Bream Bay

Ph mbl 021 7758 48 mbl, hm 432 1602  
 Email: skincarla@xtra.co.nz

All aspects of stock sales including:  
 • dairy beef • bobby calves • store cattle • live export heifers  
 • sheep • pigs • supplying stock for slaughter

Also caters for small block holders.

**Carrfields** **Livestock**

**Ruakaka Motors**

Mechanical and Auto Electrical  
 Repairs and Servicing

Monday - Friday 7.30am - 5pm  
 Open Saturday morning 8am - 1pm.

Tyres and Batteries  
 Warrant of Fitness testing  
 Phone 432 7233

**PARADISE QUARRY**

**PARADISE QUARRY STONEMASONS**  
 Specialists in stunning stone for landscape  
 Suppliers & installers of northland's own schist for all your  
 stonemasonry & landscaping Requirements

(09) 432 2722 or GEOFF (021) 972 139  
 www.paradisequarry.com

**The Office Chick**

Phone/Text: 027 235 3479  
 Email: admin@theofficechick.net  
 www.theofficechick.net

Virtual assistant for all your administration,  
 accounts and secretarial needs.  
 Mobile service - your office or ours.  
 Pick up and delivery service available.  
 theofficechick



**BLIND PRO**

Blinds • Awnings • Shutters

Indoor blinds and outdoor screens

Call us today for a free, no obligation  
 consultation and quote

ph 09 423 9661  
 website www.blindpro.co.nz  
 email info@blindpro.co.nz

**McQUINN PUMPS**

How's Business?  
 ... It's Pumping!

24/7 SALES, SERVICE & INSTALLATION | PUMPS & WATER TREATMENT  
 PHONE SUPPORT AVAILABLE

0800 627 846  
 PHONE FREE

NOW AT 72 KIOREROA ROAD  
 —ALONG FROM RD1 & ITM

**Deadline for next issue - Wednesday 14 October**



# TRADES & SERVICE DIRECTORY Ph 09 432 0209



## DRAINAGE:

\* Septic Systems \* Water Tanks \* Truck & Digger Hire \*  
\* Subdivisions \* Domestic \* Commercial \*  
Certifying Drainlayers

Licensed Contractor for  
Waste & Drainage Work



## EARTHWORKS:

\* Subdivisions \*  
\* Farm Work: Effluent Pond Design & Build, Dams, Races \*  
\* House Sites \* Driveway Prep \* Lawns \* Roothing \*

P. 09 432-7877 M. 027-432-7877  
E. karl@hansende.co.nz



## Rowsells Collision Repair Centre Ltd.

Panelbeating and Spraypainting  
Caravan and Motorhome Repairs  
Tyres New and Secondhand  
Punctures

470 Marsden Point Rd, Ruakaka  
Call 09 4330313 24 Hrs or Bert 021 983 724



**Brian the Painter**  
Decorator, Restorer, Handyman  
Property Maintenance

No job too small,  
No travelling time charges  
Free advice

Phone 0274 882371 Or 09 431 4882  
Email: hollis@hotmail.co.nz



## LOW COST DRIVEWAYS & SURFACING NEEDS

Concrete or asphalt beyond your budget ...

We have the next best solution for a  
fraction of the price.

Call for a quote, you'll be pleased you did!

Paradise Quarry Contractors

Geoff (021) 972 139 or (09) 432 2722

For contractors who 'think' ...



LONG RUN ROOFING & CLADDING,  
RE ROOFING & SPOUTING,  
EDGE PROTECTION

Ph Terry 021 562 269  
Email: wetaroofting@xtra.co.nz

RELIABLE & PROFESSIONAL SERVICE



**M&S LANSDOWN CARTAGE LTD**  
WATER DELIVERY

Phone: 021 119 6400  
lansdown.m.s@gmail.com

## M.V.B. Electrical Ltd.

Working in Bream Bay since 1977

Repairs • Installations • Advice

Mike van Blommestein

Phone: 09 432 1015 • Mobile: 0274 783 749  
Email: mikevanb@xtra.co.nz

## SHADES DIRECT - CANOPIES - AWNINGS - SCREENS



Call for an obligation  
free design, and quote

Phone 0800 SHADES,  
0800 742 337  
Rodger 021 274 2337

THE OUTSIDER  
Aluminium Awning System

or visit [www.shadesdirect.co.nz](http://www.shadesdirect.co.nz)

## GRAEME BINT FENCING

GOOD RATES, NO JOB TOO SMALL

09 432-1599 or  
027-292-2833

grbint@xtra.co.nz

## MANGAWHAI SMALL ENGINES

Grasshopper, Husqvarna and Honda dealer



194 Molesworth Drive, Mangawhai  
Ph: 09 431 5270 or Mb: 021 655 481  
Email: msengines@xtra.co.nz

BLINDS  
SHUTTERS  
& CURTAINS  
WHANGAREI

Locally Owned and Operated

Rollers, Venetians, Verticals,  
Shutters, & Curtains



Ask about our DISCOUNT for houselots

Free in-home measure & quote  
Free Installation

Phone Gail 0211 95 35 35

[www.blindsandshutters.co.nz](http://www.blindsandshutters.co.nz)

## BREAM BAY ACCOMMODATION

RUAKAKA

STUDIO - HOLIDAY HOMES - B&B  
BOOK ONLINE OR PHONE

Ph: 09 432 7025 Mob: 021 2722 739

website for online bookings: [www.breambayaccommodation.com](http://www.breambayaccommodation.com)

**FLOORCRAFT**  
CARPET & VINYL

Your First Choice in Flooring

Ed Fudge 021 1944 020

E-mail: [floorcraftfirst@gmail.com](mailto:floorcraftfirst@gmail.com)

Web: [www.floorcraftwhg.co.nz](http://www.floorcraftwhg.co.nz)

Freephone: 0800 46 47 48 Ph: +64 (09) 438 0527

49 Port Road, Whangarei



## LAWSON CARTAGE

FOR ALL YOUR  
EARTHWORKS & CARTAGE NEEDS

Suppliers of: topsoil, compost, woodchip,

bark, sand, pebble, rocks and firewood.

Ph/Fax 09 432 8418 or 021 768 940

458 Marsden Point Rd. PO Box 142, Ruakaka 0151  
email: [lawsoncartage@xtra.co.nz](mailto:lawsoncartage@xtra.co.nz)



asbestos removal

Textured Ceilings  
Asbestos Fibrolite  
Asbestos Lagging

Garry Smith  
Mob 027 738 7888

Ph 09 432 7305  
Fax 09 432 7304  
email: [garryasbestos@xtra.co.nz](mailto:garryasbestos@xtra.co.nz)  
14 Bream Bay Drive,  
Ruakaka, 0116

**BREAM BAY NEWS PHONE 09 432 0209**

Email: [breambaynews@xtra.co.nz](mailto:breambaynews@xtra.co.nz)

Post copy to: Bream Bay News, RD 2, Waipu

Email: [breambaynews@xtra.co.nz](mailto:breambaynews@xtra.co.nz)

or leave it at the Waipu or Ruakaka Post and Lotto Shops

**WANTED****VEHICLES WANTED**

Top cash paid For any VANS, UTES, TRUCKS, 4X4, Dead or Alive, damaged, de-registered Mechanical problem, no WOF we buy it. Call 0800 333 398

**FOR SALE**

**QUALITY KING SINGLE BED** \$80.00  
Phone 09 4327191

**SUPER KING WOODEN SLAT BED.** Includes: headboard, mattress, near new sheets, 2 pillows. \$750. Phone 021 838 134

**WATER TANKS**

09 431 2211

sales@absoluteconcrete.co.nz

**WORMS FOR SALE**

For worm farms  
Phone 432 0209  
or text 027 432 0070

**RUAKAKA A BRIEF HISTORY**

Copies \$25  
Available from Ruakaka Stationery & Gifts in the Ruakaka Towncentre  
Ph: 432 8104  
or from Sue Tisdall  
Ph. 4328112

**THE NEXT PUBLICATION DATE**

of the Bream Bay News will be Thursday 22 October

The deadline for all copy is 4pm on Wednesday 14 October

**SERVICE OFFERED****NORTHLAND HEADSTONES**

Located in One Tree Point  
Your Local Headstone Showroom  
Call 0800 707 800  
www.northlandheadstones.co.nz



**Tree Removal**  
✓ Pruning  
✓ Chipping  
✓ Stump grinding  
Qualified & Insured  
Ph Scott (0800) 468-9663  
**Arborcare Tree Maintenance**

**LINKING HANDS**  
Health Shuttle  
Phone  
(09) 431 8969

**Waipu Boarding Cattery**

Excellent care and accommodation  
Ph Sue 432 0394

**Bream Bay Garden & Home Maintenance**  
Free quotes  
Ph. Marcus  
021 343 727



**WATER TANK CLEANING**  
No need to empty your tank  
• Vacuum or full scrub  
Phone Mark Draper  
0274 707 607

**GRAZING AVAILABLE**

**GRAZING AVAILABLE** for up to 80 yearlings, good rate & care, avail now in Mangawhai area, long term preferred. 0274 472696

**ACCOMMODATION OFFERED**

**ONE AND TWO BEDROOM UNITS**  
Available in Ruakaka  
From \$275 per week  
Ph. Andrew 027 459 6391

**ACCOMMODATION WANTED**

**SINGLE MALE PENSIONER**, clean & tidy seeks small cottage for permanent rental Phone 020 405 01313

**PERSONAL**

**MID SIXTIES GUY** seeks another male in the late sixties to early seventies for friendship etc ,odd day out. Reply to: justiansplace@outlook.com with details

**PARENT HELPLINE**  
0800 568 856  
Available from 9am - 9pm 7 days a week.

**CLASSIFIED ADVERTISING**

Costs \$5 for up to 20 words and 20c for each additional word.  
Boxed, classified adverts measuring approx 4cm sq adverts cost \$15 plus GST

Phone your advert through to 432 - 0209

email it to:  
breambaynews@xtra.co.nz

Post to:  
Bream Bay News,  
RD 2 Waipu 0582

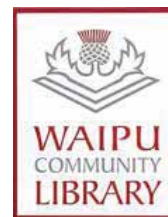
or leave it with payment at  
*The Waipu Post Shop  
or the Ruakaka Gift  
and Lotto Shop*

**SITUATIONS VACANT**

**BREAM BAY NEWS DELIVERY PERSON.** In the Waipu area. For the St Marys Rd areas. Please phone or text 027 432 0070.

**UNITED CIVIL CONSTRUCTION**  
is currently seeking Construction Workers for Marsden Point.

For more information and to apply, please go to Listing #: 2787302856 in Trade Me jobs (www.trademe.co.nz/jobs) or contact Cheryl Prince on 09 430 1281.

**LIBRARY HOURS**

Monday, Wednesday,  
Thursday, Friday &  
Saturday 10am - 1pm.  
Tuesday 10am - 4pm.



**RUAKAKA COMMUNITY LIBRARY**  
Takutai Place, Ruakaka  
432 8406  
Mon - Fri 9:30am-3:30pm  
Sat 9am-1pm

JP Service available  
Saturdays 10am - 11am.

**FUNDRAISING APPEAL****Save Ruakaka Recreation Centre!**

**Fire proof now to continue community service!**

**Please help us to raise funds!**

We're excited to announce that we've raised \$ 20,000 so far!

**To donate please go to the link below to help us raise \$100,000 !**

<https://givealittle.co.nz/cause/save-the-ruakaka-recreation-centre>  
You can also donate by purchasing a \$ 2 raffle ticket. Visit us at the Ruakaka Recreation Center. You can win a beautiful glass platter with sweets.

**FOR CHILDREN****MAINLY MUSIC**

Mainly Music is on each Wednesday at 10.00am in the Waipu Presbyterian Church Hall All welcome

**TOY LIBRARY**

In the Waipu Presbyterian Church Hall. All families and Grandparents welcome. Wednesdays after Mainly Music 11am to 1pm.  
Contact Lynnette 432 0441 & Julie 432 0388 or 021 072 6710



## MARKETS

**Handmade & Homegrown**  
ARTS | CRAFTS | FOOD

**WAIPU**  
*Boutique Market*  
SUNDAY

Sunday 11 October  
9:00am - 1:00pm  
Waipu Coronation Hall

Claire | 021 272 2294  
Kate | 021 064 5698  
www.waipumarket.co.nz



## Marsden Cove MARKET

SUNDAY 18 OCTOBER

9am - 1pm

in the marquee at the  
Marsden Cove Marina

ART + CRAFT + ARTISIAN + PRODUCE

## JUSTICES OF THE PEACE



## Justices of the Peace

**Ruakaka**

Ms AP Paki 09 432 8262/021 149 1625  
Darrell Trigg 09 432 7256/021 332 901  
Ken Orr 09 432 8215  
JM Archibald 021 227 4355  
Wayne Buckland 09 432 8226 Ext 703  
PH Goonan 021 824 825

**One Tree Point**

Jules Flight 09 432 8336/0274 777 210  
Sir John Goulter 09 432 7868/021 612 442  
MM Jolley 027 415 9486

**Waipu**

Trevor Vaile 09 432 0400  
Mr. L.M. Hitchens 022 656 4055  
Mr. D.A. Scott 09 929 9729  
or 027229 9752  
Ken Couper 027 292 0524  
Angela Stolwerk 021 823 966

Make contact with a Justice of the Peace  
(on any day) and make an appointment to have your  
documents completed.

## THE NEXT PUBLICATION DATE

of the Bream Bay News will be Thursday 22 October  
The deadline for all copy is 4pm on  
Wednesday 14 October

## PUBLIC NOTICES

Local people  
read THE  
BREAM BAY NEWS  
It is an  
effective  
place to  
advertise

**Bream Bay Medical Centre Ltd.**

Monday - Friday: 8.30am - 5pm

Saturdays: 9am - 12pm

Please advise at time of booking if  
you require an extended consultation.

We will be closed from 3pm - 5pm  
on Wednesday 21 October 2020 for Staff Training.

Marsden Point Road, Ruakaka Town Centre, Ruakaka  
Ph: 432 8060 Fax: 432 8230



Bream Bay  
Community  
Support Trust

Takutai Place, Ruakaka Phone 09 432 7197

- Free medical clinic each Wednesday  
9am - 12noon.
- Free budgeting service by appointment  
- 432 7197 .
- Narcotics Anon Wednesdays 6.30-730pm

The Bream Bay Community Trust offers:

- A Family Centred support team.
- Family violence Intervention advocacy
- Advice and referrals to other agencies  
and relevant support services.



Workbridge, which helps people realise their po-  
tential and find employment will be at the Bream  
Bay Community Trust every Tuesday.  
Phone 432 7197 to book an appointment.

## TIDES

## MARSDEN POINT TIDES

	AM		PM	
Thu 8 Oct	12.09	2.4	12.36	2.4
Fri 9 Oct	12.51	2.3	1.21	2.3
Sat 10 Oct	1.38	2.3	2.11	2.3
Sun 11 Oct	2.30	2.2	3.08	2.3
Mon 12 Oct	3.29	2.2	4.09	2.3
Tue 13 Oct	4.32	2.3	5.10	2.4
Wed 14 Oct	5.37	2.4	6.08	2.5
Thu 15 Oct	6.38	2.5	7.03	2.7
Fri 16 Oct	7.35	2.6	7.56	2.8
Sat 17 Oct	8.29	2.8	8.47	2.9
Sun 18 Oct	9.21	2.9	9.38	2.9
Mon 19 Oct	10.12	2.9	10.28	2.8
Tue 20 Oct	11.02	2.9	11.19	2.8
Wed 21 Oct	11.53	2.8	~	~
Thu 22 Oct	12.11	2.7	12.45	2.7
Fri 23 Oct	1.04	2.5	1.41	2.6

## TE KOHANGA REO O TAKAHIWAI ANNUAL GENERAL MEETING

MONDAY OCTOBER 12TH  
6.00PM

At Takahiwi Kohanga Reo

Nau mai haere mai ki nga  
Whanau katoa  
ki te tautoko te kaupapa

## NORTHPIKE COMMUNITY LIAISON COMMITTEE

This committee meets periodically to review the en-  
vironmental performance of the Northpine timber  
manufacturing plant in Waipu, in consultation with  
representatives of the local councils. Any Waipu  
resident with concerns about the environmental ef-  
fects of the Northpine plant should notify the North-  
pine office (432 1155). Concerns will be recorded,  
considered and subsequently reviewed by the liaison  
committee. The Independent chairperson of the li-  
aision committee is Steve Goldthorpe 0274 849 764.

## BREAM BAY SUNDAY CHURCH SERVICES

**Presbyterian** Camellia Ave, Ruakaka:  
8.45am. The Centre, Waipu: 10.15am.  
Prayer Service: 7pm

**Encounter** 223 Marsden Pt. Rd,  
Ruakaka, 10am.

**Anglican** 1st and 3rd Sundays - St Paul's  
Ruakaka 2nd and 4th Sundays - St Peter's  
Waipu. All services start at 9.30am.

**Catholic** Holy Family Church,  
Ruakaka, 10.30am. Mass

**Lifepoint.** 300 OTP Rd, 10.30am.

PREMIUM.CO.NZ | FINE PROPERTIES

PREMIUM®



## TEAM MCKENZIE

**SANDY 021 431 541**  
**YANA 021 080 79342**

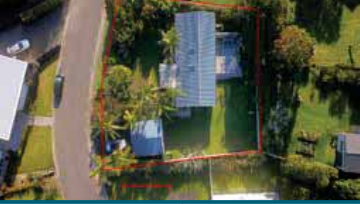
LICENSED AGENT &amp; SALESPERSON REA 2008

**20+ YEARS OF LOCAL REAL ESTATE SALES EXPERIENCE**  
**Our Family Will Care For Your Family**

**PREMIUM PARTNERSHIPS | PROVEN RESULTS**

**LANGS BEACH | 13 WATERMAN DRIVE**  
**Subtropical Sanctuary**

### ENTRY LEVEL @ LANGS



- Nestled in privacy this three bedroom and two bathroom home radiates easy care living.
- 995m2 fully fenced section and 96m2+decks very tidy family home.
- Two sky lights bring extra light, front and back decks are fantastic for entertaining!
- Short walk to Ding Bay and Lang's Beach via a walkway to Cove Road.

**VIEW | BY APPOINTMENT ONLY**  
**PRICE | \$879,000NEG**  
**PREMIUM.CO.NZ / 27533**

**LANGS BEACH | 108 THE RIDGE**  
**Secluded Heaven**

### BUSH SURROUNDINGS



- A place so peaceful it's very hard to leave.
- Ideally positioned on just over 4ha's this 291m2 home with 4 bedrooms and 2 bathrooms has unforgettable views.
- In addition you have your own boat shed, shared tennis courts, cabanas and walking tracks within the gated community.
- Are you packed for your summer home?

**VIEW | BY APPOINTMENT ONLY**  
**PRICE | \$1,495,000** ~~\$1,495,000~~ **\$1.150MIL**  
**PREMIUM.CO.NZ / 27455**

COAST &amp; COUNTRY SALES LTD MREINZ LICENSED REA 2008

## Selling Bream Bay Waipu Real Estate



### FANTASTIC DEVELOPMENT OPPORTUNITY PRICE REDUCED

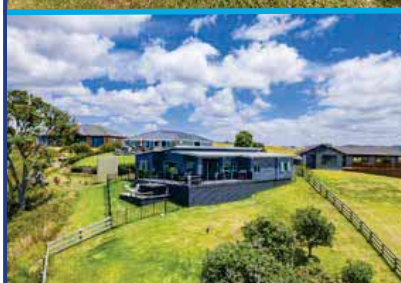
- Landbank/develop this unique lifestyle block.
- Lot 1 (\$950,000) zoned Rural Production with fully renovated 3-bedroom, 2-bathroom home on 2.164 hectares. The home is nestled privately amongst mature trees and a citrus orchard. Plenty of room for family and friends to camp and enjoy over the summer months.
- Bore on site providing ample water.
- Perfect for horses or horticulture.
- 3 sheds to house the toys or machinery.



- Lot 2 (By Negotiation) zoned Rural Village Residential on 2957m2 with road frontage and the option to develop 5 sections. Consent has been granted.
- Walk to Waipu village for all amenities & cafes.

**OPEN HOME:** Sun 11th October 11-12pm  
44 Shoemaker Road, Waipu

Lyndie Mullins 021 101 6389 **WPU11238**  
Roger King 027 755 5001



### COASTAL BLISS

- Incredible river, sea and island views
- Immaculate 4-bedroom contemporary home
- Low maintenance and quality features
- Elevated, north facing site
- Internal access double garage
- Walk to Waipu along the Waipu Walkway
- Short stroll to the water

**OPEN HOME:** Sun 11th October 1-1.45pm  
11 Seascape Crescent, Waipu

Judy Guy 027 221 5623 **WPU11179**

**The Centre, Waipu** [www.waipurealestate.co.nz](http://www.waipurealestate.co.nz) **09 432 4000**

## BARFOOT & THOMPSON



NZ family owned and trusted for over 95 years.  
Northland & Auckland wide.  
Proud to be involved in the local community.

### Barfoot & Thompson Bream Bay

**A Unit 27, 386 Marsden Point Rd, Ruakaka**  
**E breambay@barfoot.co.nz**  
**P 09 432 7505**

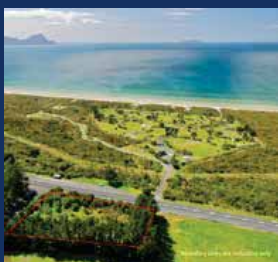


### 35 Karoro Rd - barfoot.co.nz/796065

Located in a quiet cul-de-sac, one section back from the harbour, this generous 4 bedroom family home has been well designed featuring functionality & character. Relaxation will become habitual in your own piece of paradise.



**Andy Dalton**  
**M 027 595 6579**  
**E a.dalton@barfoot.co.nz**



### 0 Mountfield Rd - barfoot.co.nz/779895

Awesome position located between Ruakaka and Waipu this large flat block of land 9310m<sup>2</sup> is asking for new owners and a makeover.  
Call now to view.



**Steve Gibson**  
**M 021 211 6255**  
**E s.gibson@barfoot.co.nz**

## BARFOOT & THOMPSON



### 49 Takahiwai Rd - barfoot.co.nz/770450

What an opportunity! Four hectares of fertile grazing or cropping land, flat even terrain and perfect future investment. Blank canvas to build your dream home, landscape & develop facilities. Plenty of options here!



**Janice Chisholm**  
**M 021 541 543**  
**E j.chisholm@barfoot.co.nz**



### 223 One Tree Point Rd - barfoot.co.nz/793544

Waterfront Bargain Bach! Situated on a level 870m<sup>2</sup> approx. corner site, this kiwi bach is directly across the road from the beach! Awesome water view upstairs & downstairs. Loads of parking & double garage at the rear.



**Angelique Hartnett AREINZ**  
**M 027 435 6411**  
**E a.hartnett@barfoot.co.nz**



### 98 Barbados Way - barfoot.co.nz/796118

Tastefully designed low maintenance home will impress, creating a humble sense of elegance as you walk in and feel at home. Spoil yourself with the luxury of a residents golf course, local boat ramps and cafes.



**Ashleigh Louise**  
**M 027 733 5703**  
**E a.louise@barfoot.co.nz**